

SERVICE MANUAL
Level 1&2

NOKIA
2720
FOLD

RM-519 / RM-520



Transceiver characteristics

Band:

GSM 900/1800 (RM-519)

GSM 850/1900 (RM-520)

Main Display:

128x160 TFT 1.8", 65 000 colors

Secondary Display:

128x160 TFT 1.36", black and white

Camera:

1.3 mpix (1024 x 1280 pixel)

Operating System:

S40

Connections:

Bluetooth 2.1 +EDR

Nokia 2.5 mm audio connector

Charging plug, 2 mm

EF III for SW Flashing

Transceiver with 850mAh BL-4CTbattery pack

Talk time	Standby	Note
GSM: Up to 5 hours	GSM: Up to 390 hours	Talk times are dependant on network parameters and phone settings

Table of contents

1. Change history 3

2. Copyright..... 4

3. Warnings and cautions..... 5

 3.1 Warnings 5

 3.2 Cautions 5

4. ESD protection..... 6

5. Care and maintenance 7

6. Battery information 8

7. Exploded view 9

8. Service devices 10

9. SW-update 11

10. Disassembly instructions 12

11. Assembly hints 18

12. Solder components..... 19

1. CHANGE HISTORY

Status	Version No.	Date	Comments
Approved	1.0	14.06.2009	First approved version

The purpose of this document is to help NOKIA service levels 1 and 2 workshop technicians to carry out service to NOKIA products. This Service Manual is to be used only by authorized NOKIA service suppliers, and the content of it is confidential. Please note that NOKIA provides also other guidance documents (e.g. Service Bulletins) for service suppliers, follow these regularly and comply with the given instructions.

While every endeavor has been made to ensure the accuracy of this document, some errors may exist. If you find any errors or if you have further suggestions, please notify NOKIA using the address below:

CMO Operation & Logistics
Training and Vendor Development
Multimedia Creation & Support
<mailto:Service.Manuals@nokia.com>

Please keep in mind also that this documentation is continuously being updated and modified, so watch always out for the newest version.

2. COPYRIGHT

Copyright © 2009 Nokia. All rights reserved.

Reproduction, transfer, distribution or storage of part or all of the contents in this document in any form without the prior written permission of Nokia is prohibited.

Nokia, Nokia Connecting People, and Nokia X and Y are trademarks or registered trademarks of Nokia Corporation. Other product and company names mentioned herein may be trademarks or tradenames of their respective owners.

Nokia operates a policy of continuous development. Nokia reserves the right to make changes and improvements to any of the products described in this document without prior notice.

Under no circumstances shall Nokia be responsible for any loss of data or income or any special, incidental, consequential or indirect damages howsoever caused.

The contents of this document are provided “as is”. Except as required by applicable law, no warranties of any kind, either express or implied, including, but not limited to, the implied warranties of merchantability and fitness for a particular purpose, are made in relation to the accuracy, reliability or contents of this document. Nokia reserves the right to revise this document or withdraw it at any time without prior notice.

The availability of particular products may vary by region.

IMPORTANT

This document is intended for use by qualified service personnel only.

3. WARNINGS AND CAUTIONS

Please refer to the phone's user guide for instructions relating to operation, care and maintenance including important safety information. Note also the following:

3.1 Warnings

1. CARE MUST BE TAKEN ON INSTALLATION IN VEHICLES FITTED WITH ELECTRONIC ENGINE MANAGEMENT SYSTEMS AND ANTI-SKID BRAKING SYSTEMS. UNDER CERTAIN FAULT CONDITIONS, EMITTED RF ENERGY CAN AFFECT THEIR OPERATION. IF NECESSARY, CONSULT THE VEHICLE DEALER/MANUFACTURER TO DETERMINE THE IMMUNITY OF VEHICLE ELECTRONIC SYSTEMS TO RF ENERGY.
2. THE HANDPORTABLE TELEPHONE MUST NOT BE OPERATED IN AREAS LIKELY TO CONTAIN POTENTIALLY EXPLOSIVE ATMOSPHERES, EG PETROL STATIONS (SERVICE STATIONS), BLASTING AREAS ETC.
3. OPERATION OF ANY RADIO TRANSMITTING EQUIPMENT, INCLUDING CELLULAR TELEPHONES, MAY INTERFERE WITH THE FUNCTIONALITY OF INADEQUATELY PROTECTED MEDICAL DEVICES. CONSULT A PHYSICIAN OR THE MANUFACTURER OF THE MEDICAL DEVICE IF YOU HAVE ANY QUESTIONS. OTHER ELECTRONIC EQUIPMENT MAY ALSO BE SUBJECT TO INTERFERENCE.

3.2 Cautions

1. Servicing and alignment must be undertaken by qualified personnel only.
2. Ensure all work is carried out at an anti-static workstation and that an anti-static wrist strap is worn.
3. Use only approved components as specified in the parts list.
4. Ensure all components, modules screws and insulators are correctly re-fitted after servicing and alignment.
5. Ensure all cables and wires are repositioned correctly

4. ESD PROTECTION



Nokia requires that service points have sufficient ESD protection (against static electricity) when servicing the phone.

Any product of which the covers are removed must be handled with ESD protection. The SIM card can be replaced without ESD protection if the product is otherwise ready for use.

To replace the covers ESD protection must be applied.

All electronic parts of the product are susceptible to ESD. Resistors, too, can be damaged by static electricity discharge.

All ESD sensitive parts must be packed in metallized protective bags during shipping and handling outside any ESD Protected Area (EPA).

Every repair action involving opening the product or handling the product components must be done under ESD protection.

ESD protected spare part packages **MUST NOT** be opened/closed out of an ESD Protected Area.

For more information and local requirements about ESD protection and ESD Protected Area, contact your local Nokia After Market Services representative.

5. CARE AND MAINTENANCE

This product is of superior design and craftsmanship and should be treated with care. The suggestions below will help you to fulfil any warranty obligations and to enjoy this product for many years.

- Keep the phone and all its parts and accessories out of the reach of small children.
- Keep the phone dry. Precipitation, humidity and all types of liquids or moisture can contain minerals that will corrode electronic circuits.
- Do not use or store the phone in dusty, dirty areas. Its moving parts can be damaged.
- Do not store the phone in hot areas. High temperatures can shorten the life of electronic devices, damage batteries, and warp or melt certain plastics.
- Do not store the phone in cold areas. When it warms up (to its normal temperature), moisture can form inside, which may damage electronic circuit boards.
- Do not drop, knock or shake the phone. Rough handling can break internal circuit boards.
- Do not use harsh chemicals, cleaning solvents, or strong detergents to clean the phone.
- Do not paint the phone. Paint can clog the moving parts and prevent proper operation.
- Use only the supplied or an approved replacement antenna. Unauthorised antennas, modifications or attachments could damage the phone and may violate regulations governing radio devices.

All of the above suggestions apply equally to the product, battery, charger or any accessory.

6. BATTERY INFORMATION

Note: A new battery's full performance is achieved only after two or three complete charge and discharge cycles! The battery can be charged and discharged hundreds of times but it will eventually wear out.

When the operating time (talk-time and standby time) is noticeably shorter than normal, it is time to buy a new battery. Use only batteries approved by the phone manufacturer and recharge the battery only with the chargers approved by the manufacturer.

Unplug the charger when not in use. Do not leave the battery connected to a charger for longer than a week, since overcharging may shorten its lifetime.

If left unused a fully charged battery will discharge itself over time. Temperature extremes can affect the ability of your battery to charge.

For good operation times with Ni-Cd/NiMh batteries, discharge the battery from time to time by leaving the product switched on until it turns itself off (or by using the battery discharge facility of any approved accessory available for the product).

Do not attempt to discharge the battery by any other means. Use the battery only for its intended purpose.

Never use any charger or battery which is damaged.

Do not short-circuit the battery. Accidental short-circuiting can occur when a metallic object (coin, clip or pen) causes direct connection of the + and - terminals of the battery (metal strips on the battery) for example when you carry a spare battery in your pocket or purse. Shortcircuiting the terminals may damage the battery or the connecting object.

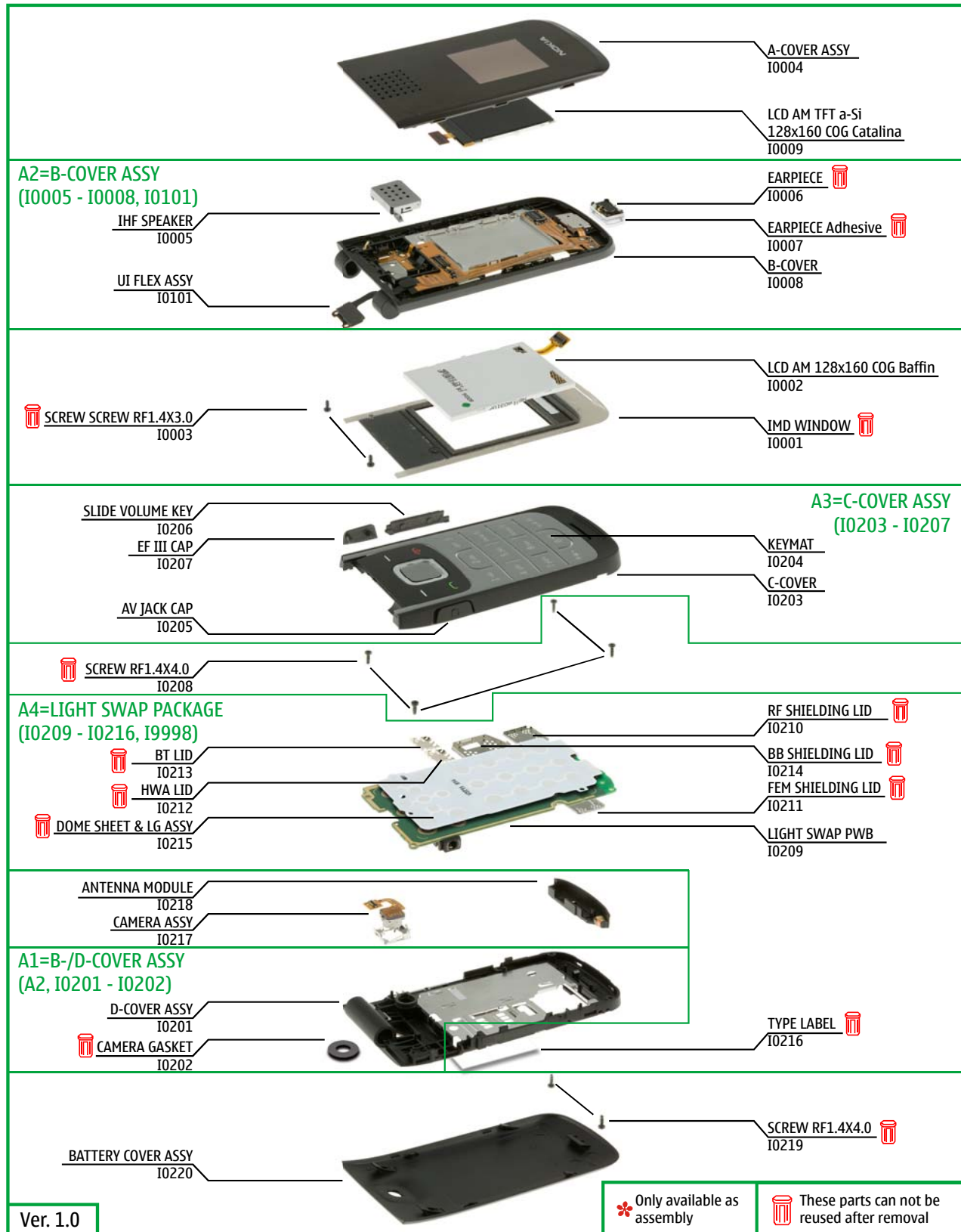
Leaving the battery in hot or cold places, such as in a closed car in summer or winter conditions, will reduce the capacity and lifetime of the battery. Always try to keep the battery between 15°C and 25°C (59°F and 77°F).

A phone with a hot or cold battery may temporarily not work, even when the battery is fully charged. Batteries' performance is particularly limited in temperatures well below freezing.







Do not dispose batteries in a fire! Dispose of batteries according to local regulations (e.g. recycling).

Do not dispose as household waste.

7. EXPLODED VIEW



8. SERVICE DEVICES

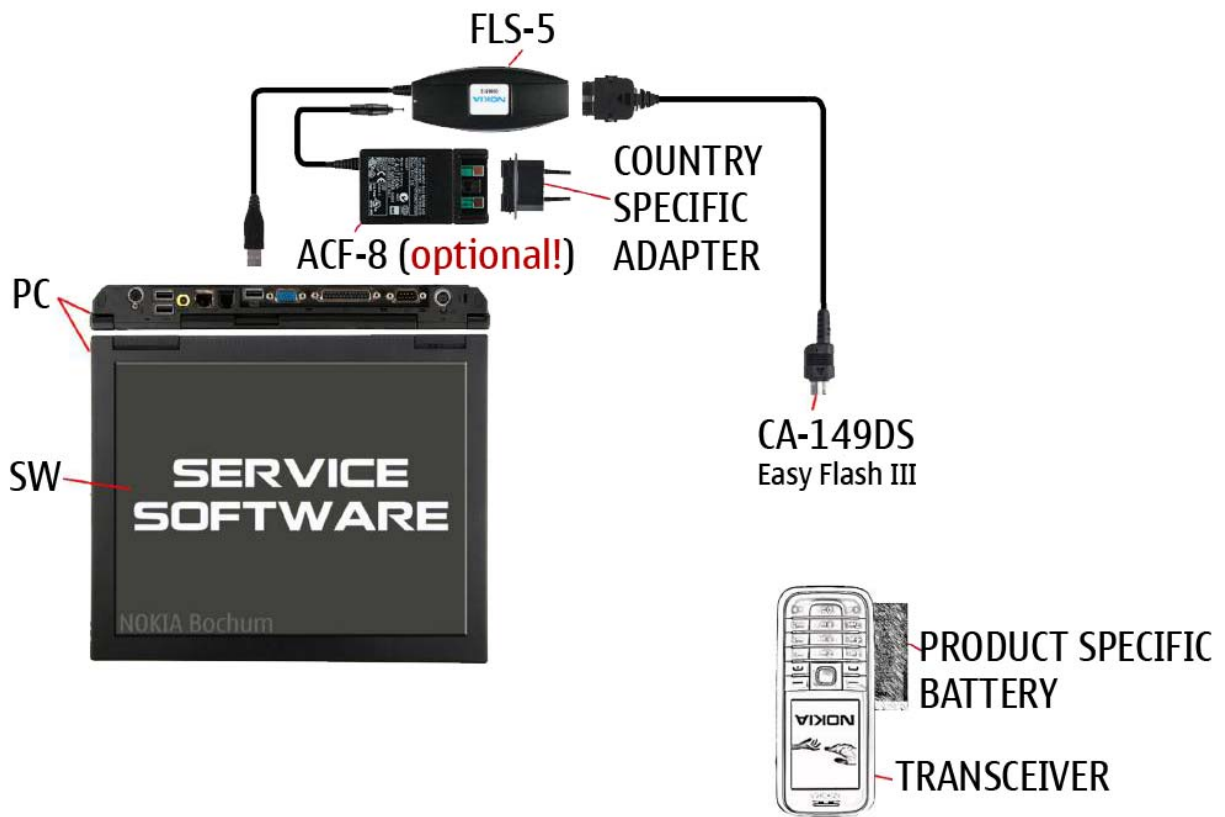
 <p>FLS-5</p> <p>FLS-5 Flash Device</p>	 <p>BL-4CT</p> <p>BL-4CT Battery</p>	 <p>AC-3 Travel Charger</p>
 <p>CA-149DS</p>	 <p>SS-6</p>	 <p>NMP standard toolkit (v2) For more information, refer to the Service Bulletin (SB-011) on NOKIA Online. Supplier or manufacturer contacts for tool re-order can be found in "Recommended service equipment" document on NOKIA Online.</p>

9. SW-UPDATE

Flash concept- (Point of Sales)

To use the FLS-5 Flash Dongle, follow the user guide inside the sales package.
Please check always for the latest version of flash software, which is available on Nokia Online.

EF III Flash concept



10. DISASSEMBLY INSTRUCTIONS



1) Nokia 2720fold disassembly.



2) You must use the Nokia Standard Toolkit version 2. You will also need the SS-6.



3) To remove the BATTERY COVER, press and push it in to the direction shown.



4) Remove the BATTERY COVER. If there is a battery inserted, remove it also.



4) Use the SS-93 to release the CAMERA GASKET and remove it with the tweezers. The CAMERA GASKET cannot be used again.



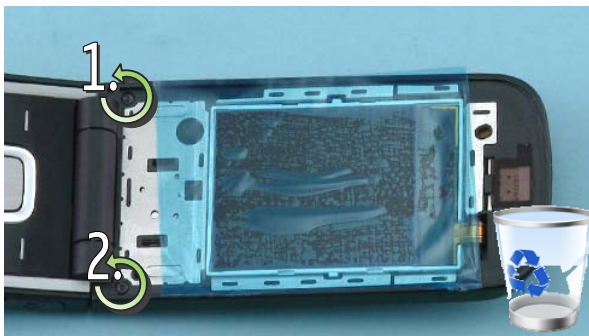
6) Open the phone and insert the SRT-6 between the IMD WINDOW and the B-COVER. Slide the SRT-6 along the window edges to loosen the adhesive.



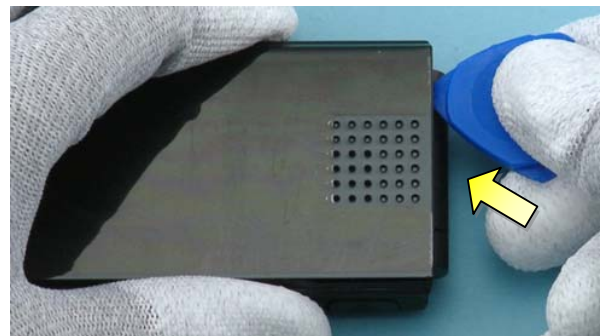
7) Remove the IMD window. The window cannot be used again.



8) Remember to protect the BAFFIN LCD with protective film.



9) Unscrew the two TORX + size 4 screws in the order shown. Do not use them again.



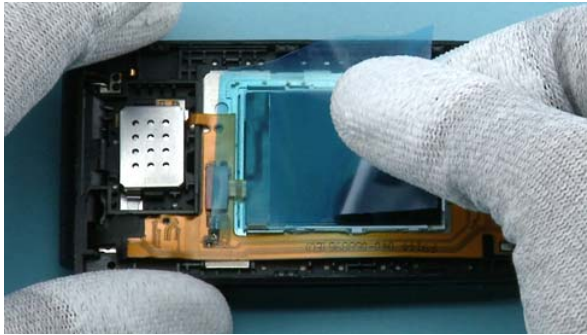
10) Fold the phone and start releasing the A-cover with the SRT-6 from the hinge side.



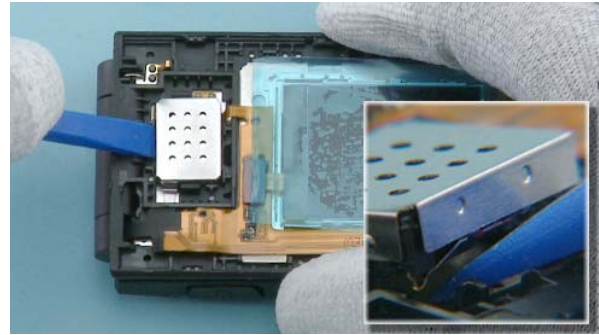
11) Slide the SRT-6 along the phone sides to release all the clips holding the A-COVER.



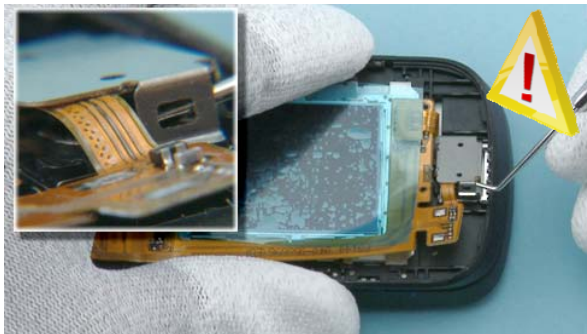
12) Remove the A-COVER.



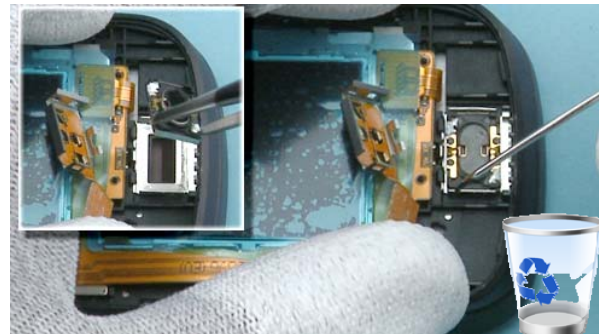
13) Remember to protect the CATALINA LCD with protective film.



14) Lift up the IHF SPEAKER with the SS-93 and remove the speaker.



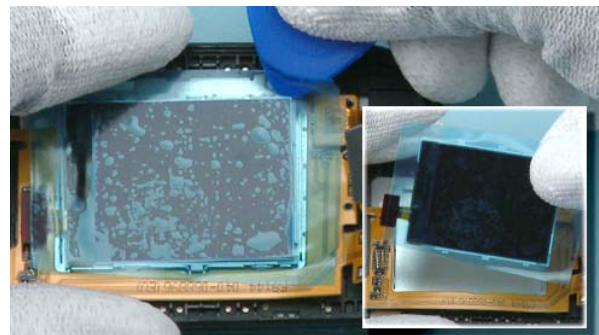
15) Use the dental tool to carefully lift up the FLEX CAN. Be aware of the sharp point of the dental tool - be careful not to injure yourself!



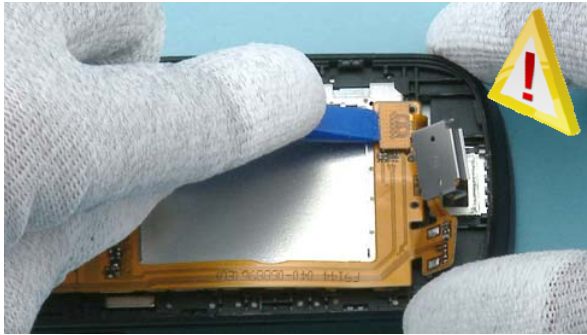
16) Carefully bend the Flex foil as shown and lift up the EARPIECE with the dental tool. The EARPIECE and the EARPIECE ADHESIVE cannot be reused.



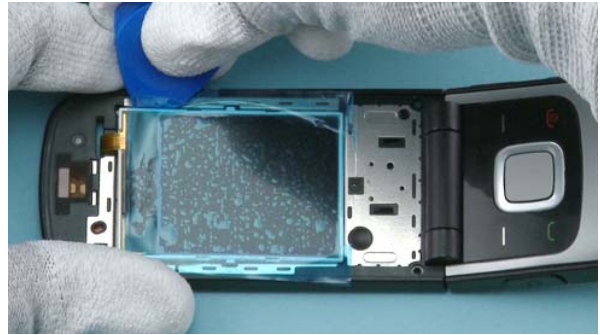
17) Disconnect the LCD connector with the SS-93. Be careful with the components around the connector!



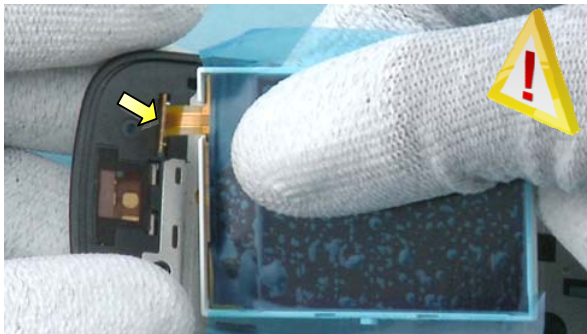
18) Use the SRT-6 to carefully lift up the CATALINA LCD. And then remove the LCD.



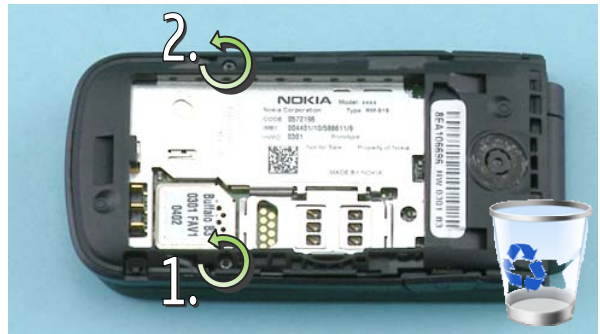
19) Disconnect the BAFFIN LCD connector with the SS-93. While opening the connector, be careful not to damage it!



20) Open the phone and carefully lift up the BAFFIN LCD with the SRT-6.



21) Pull the LCD flex carefully through the gap and remove the LCD.



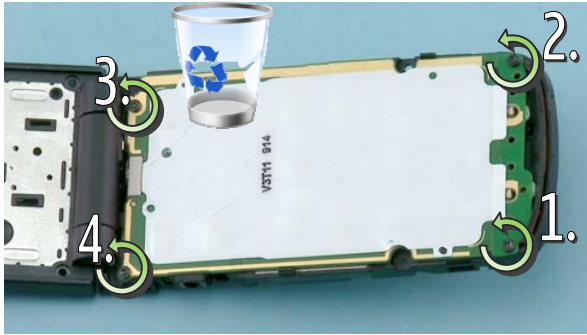
22) Fold the phone and unscrew these two TORX+ size 4 screws in the order shown.



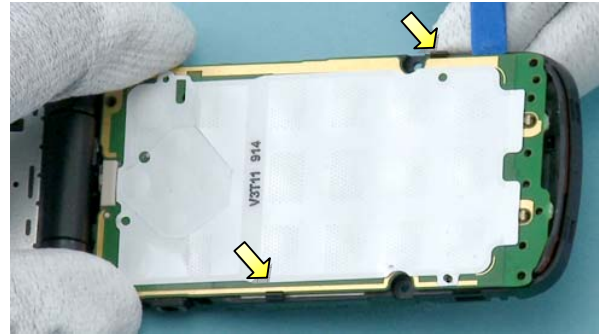
23) Open the phone and release the C-COVER with the SS-93.



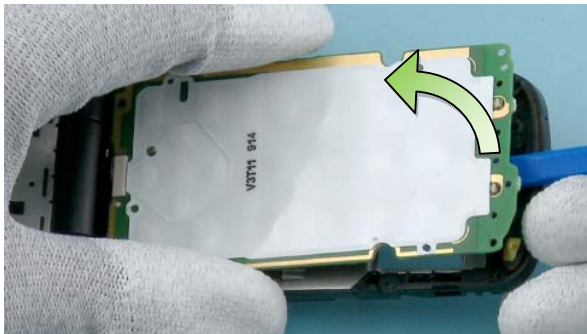
24) Turn the phone and detach the C-COVER in the direction shown.



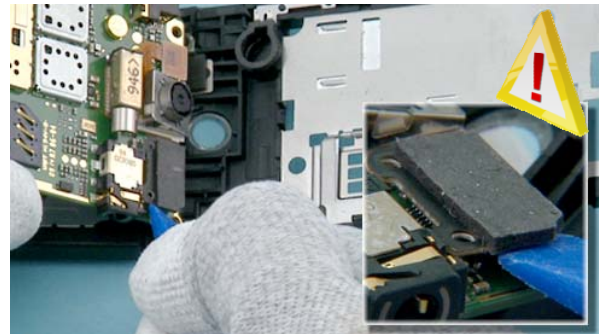
25) Unscrew the four TORX+ size 4 screws in the order shown.



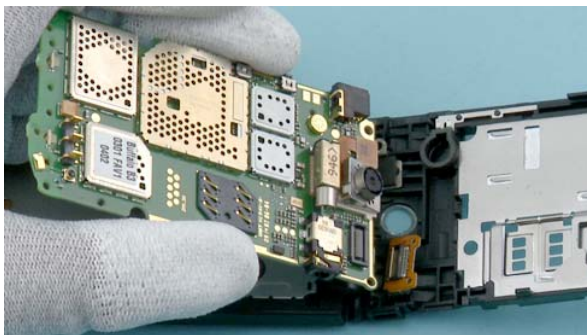
26) Carefully release the two clips holding the engine board with the SS-93.



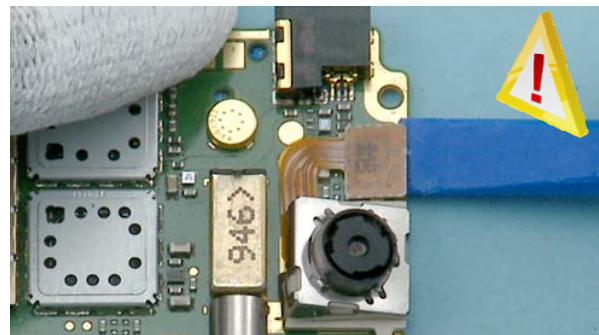
27) Carefully lift up the engine board with the SS-93 and turn it as shown.



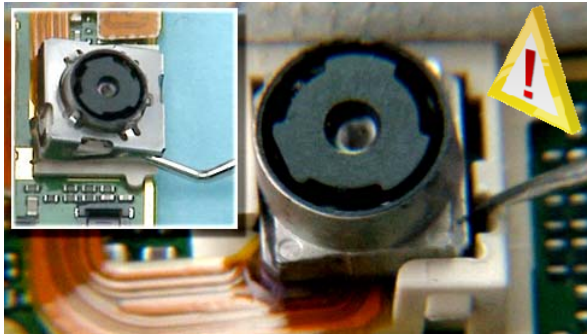
28) Before the engine board can be removed, the UI connector has to be disconnected from the engine board. Be careful with the components around the connector!



29) Remove the engine board.



30) Disconnect the camera connector with the SS-93. Be careful with the components around the connector!



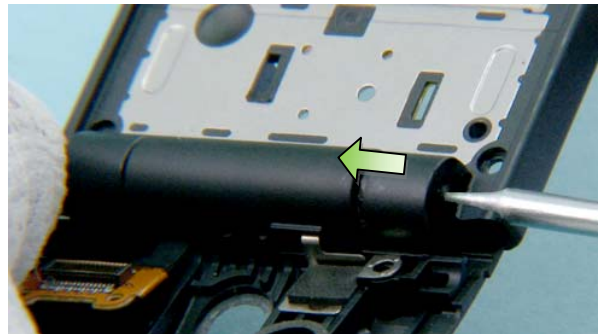
31) Carefully detach the frame holding the camera with the dental tool. Then release the camera with the dental tool.



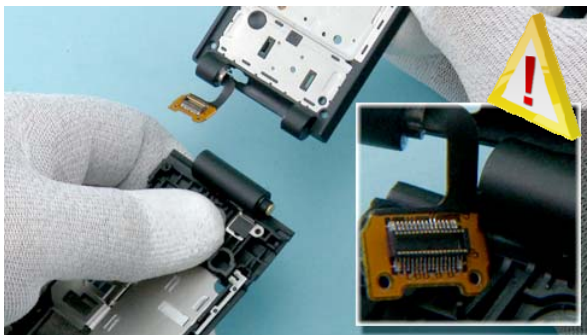
32) Release the DOMESHEET with the dental tool and peel it off. The DOMESHEET cannot be reused.



33) Use the sharp end of the SS-93 to detach the ANTENNA and then remove it.



34) Insert the SS-6 in the hole and push the tool until the HINGE is released.



35) While separating the covers, be careful not to damage the flex!



36) Nokia 2720fold disassembly is now complete.

-END OF DISASSEMBLY-

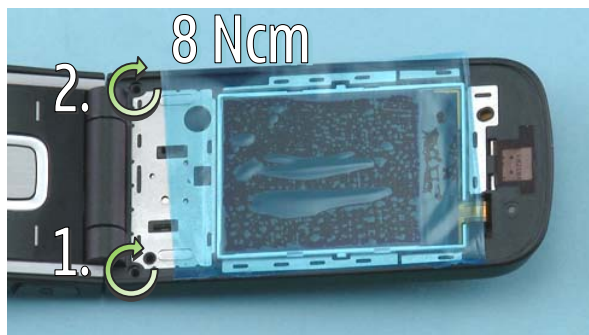
11. ASSEMBLY HINTS



1) Tighten the four TORX + size 4 screws to the torque of 8 Ncm in the order shown.



2) Tighten the two TORX + size 4 screws to the torque of 8 Ncm in the order shown.



3) Tighten the two TORX + size 4 screws to the torque of 8 Ncm in the order shown.

12. SOLDER COMPONENTS

