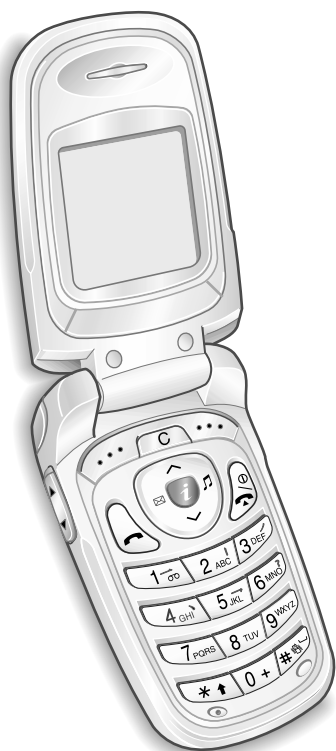




DUAL BAND Mobile Cellular Phone SGH-T508

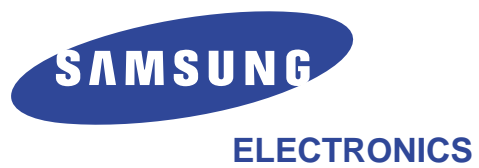
SERVICE *Manual*

DUAL BAND MOBILE CELLULAR PHONE



CONTENTS

1. Exploded Views and Parts List
2. PCB Diagrams
3. Electrical Parts List
4. Block Diagrams
5. Flow Chart of Troubleshooting and Circuit Diagrams



1. Exploded Views and Parts List

- 1-1 Main**
- 1-2 Main Parts List**
- 1-3 Travel Adapter**
- 1-4 Travel Adapter Parts List**
- 1-5 Ciger Light Adapter**
- 1-6 Ciger Light Adapter Parts List**
- 1-7 Test Jig**
- 1-8 EAR Microphone**
- 1-9 Data Kit**
- 1-10 Battery Charger**

2. PCB Diagrams

- 2-1 Main Top**
- 2-2 Main Bottom**

3. Electrical Parts List

- 3-1 Main Parts List Top**
- 3-2 Main Parts List Bottom**

4. Block Diagrams

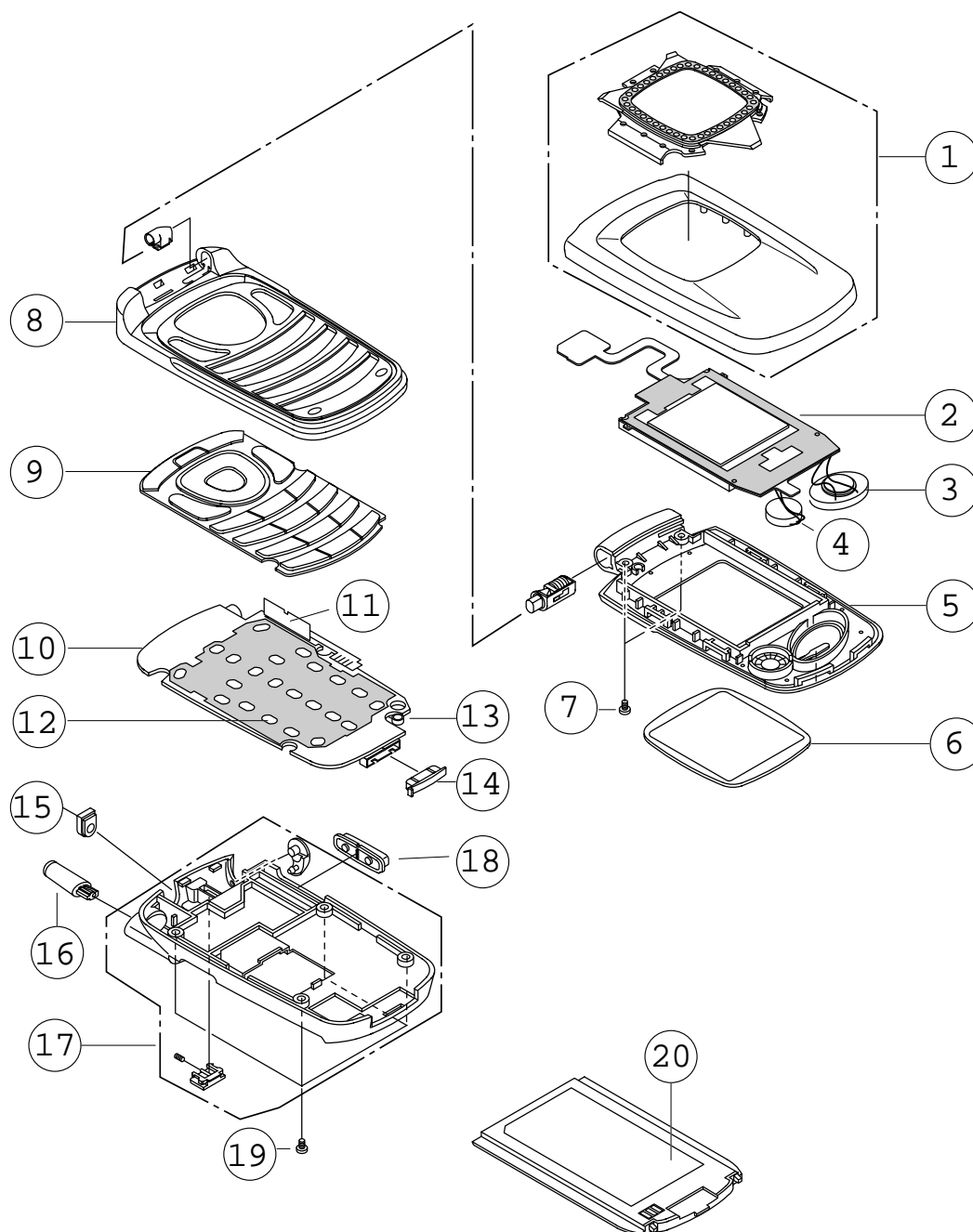
- 4-1 Main Baseband**
- 4-2 Main RF**
 - 4-2-1 RF Transmit Part**
 - 4-2-2 RF Receive Part**

5. Flow Chart of Troubleshooting and Circuit Diagrams

- 5-1 Power ON**
 - 5-2 Initial**
 - 5-3 Charging Part**
 - 5-4 Sim Part**
 - 5-5 Microphone Part**
 - 5-6 Receiver Part**
 - 5-7 Key Data Input**
 - 5-8 Ring Indicator**
 - 5-9 Backlight**
 - 5-10 Melody Part**
 - 5-11 GSM Receiver**
 - 5-12 GSM Transmitter**
 - 5-13 DCS Receiver**
 - 5-14 DCS Transmitter**
-

1. SGH-T508 Exploded Views and Parts List

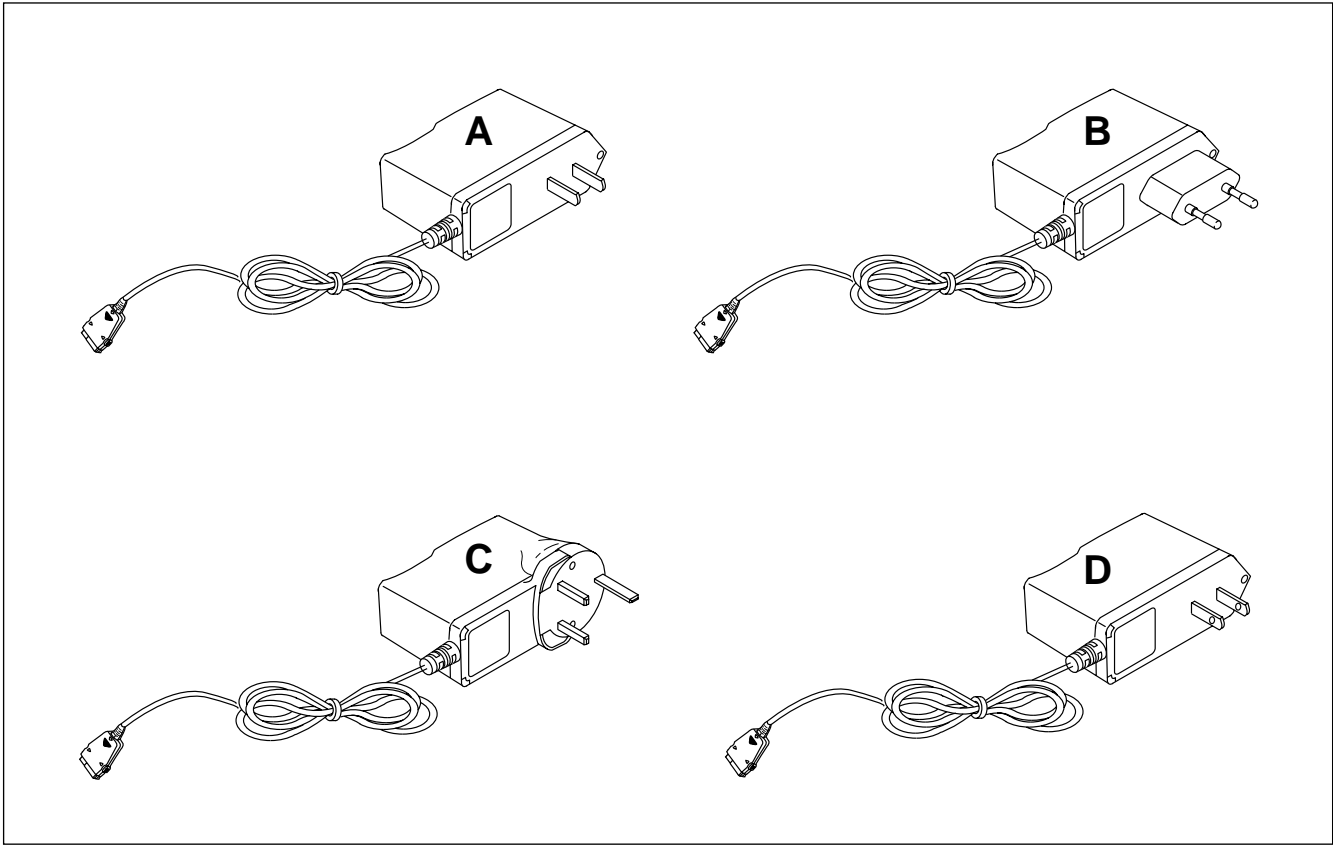
1-1 Main



1-2 Main Parts List

Location NO.	Description	SEC CODE	Remark
1	FOLDER UPPER	GH75-02664A	
2	LCD	GH07-00278A	
3	SPEAKER	3001-001345	
4	MOTOR	GH31-00048A	
5	FOLDER LOWER	GH75-02193A	
6	WINDOW LCD	GH72-05017A	
7	SCREW	6001-001478	
8	FRONT COVER	GH75-02194A	
9	KEYPAD	GH75-02196A	
10	MAIN PBA	GH92-01446A	
11	VOLKEY FPCB	GH59-00572A	
12	DOMESHEET	GH59-00571A	
13	MIC	GH59-00610A	
14	CONNECTOR COVER	GH73-01338A	
15	RF COVER	GH73-01337A	
16	ANTENNA	GH42-00242A	
17	REAR COVER	GH75-02192A	
18	VOLUME KEY	GH75-02195A	
19	SCREW	6001-001478	
20	BATTERY	GH43-00769A	

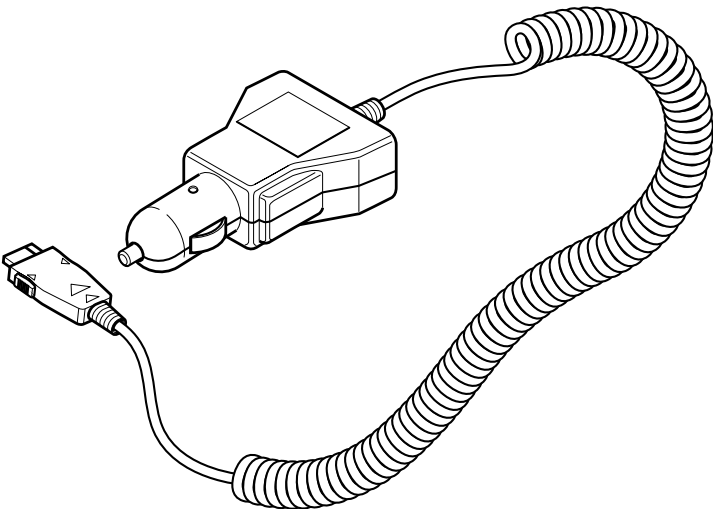
1-3 Travel Adapter



1-4 Travel Adapter Parts List

TYPE	SEC CODE	REMARK
A	GH44-00171A	CHINA
B	GH44-00184A	EUROPE
C	GH44-00171C	UNITED KINGDOM
D	Gh44-00171E	TAIWAN

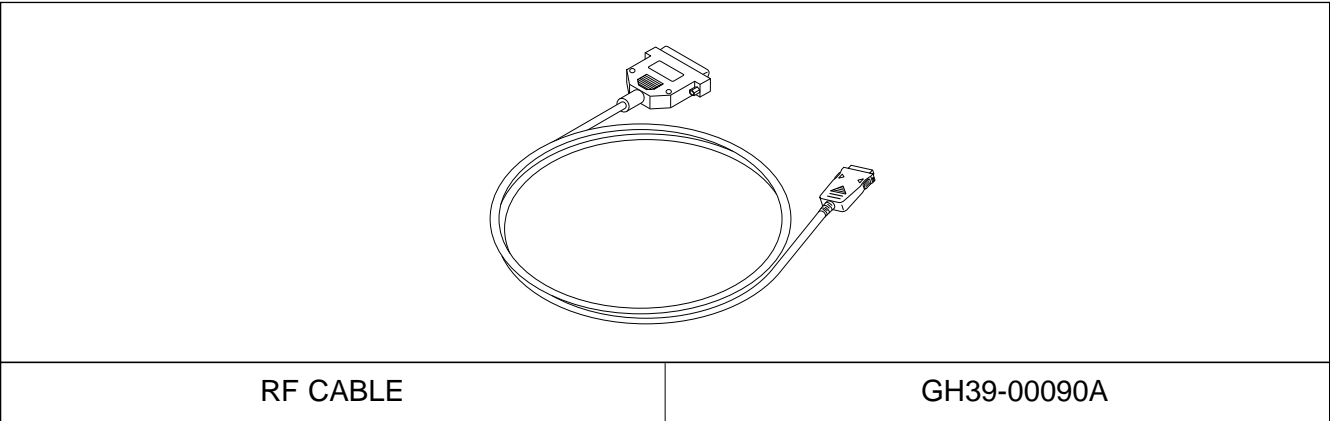
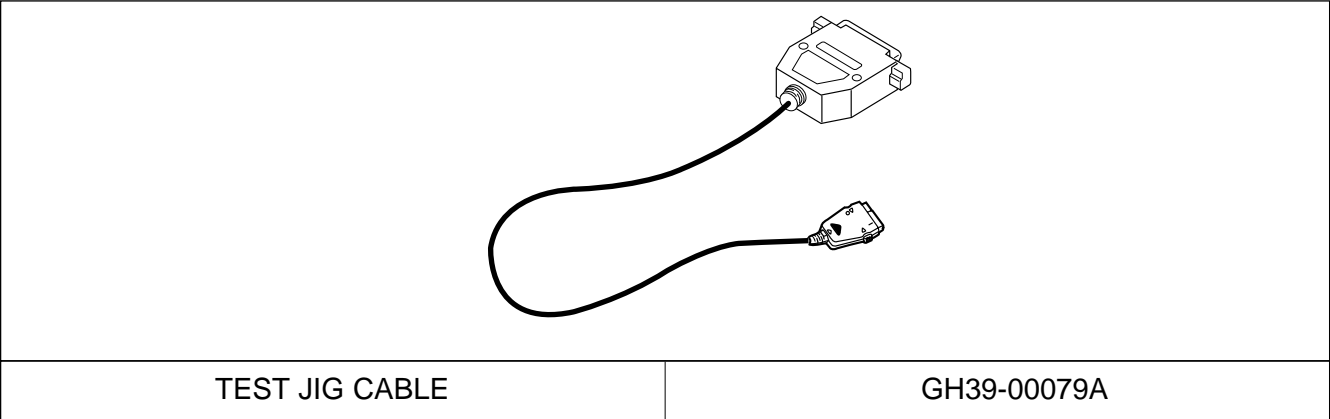
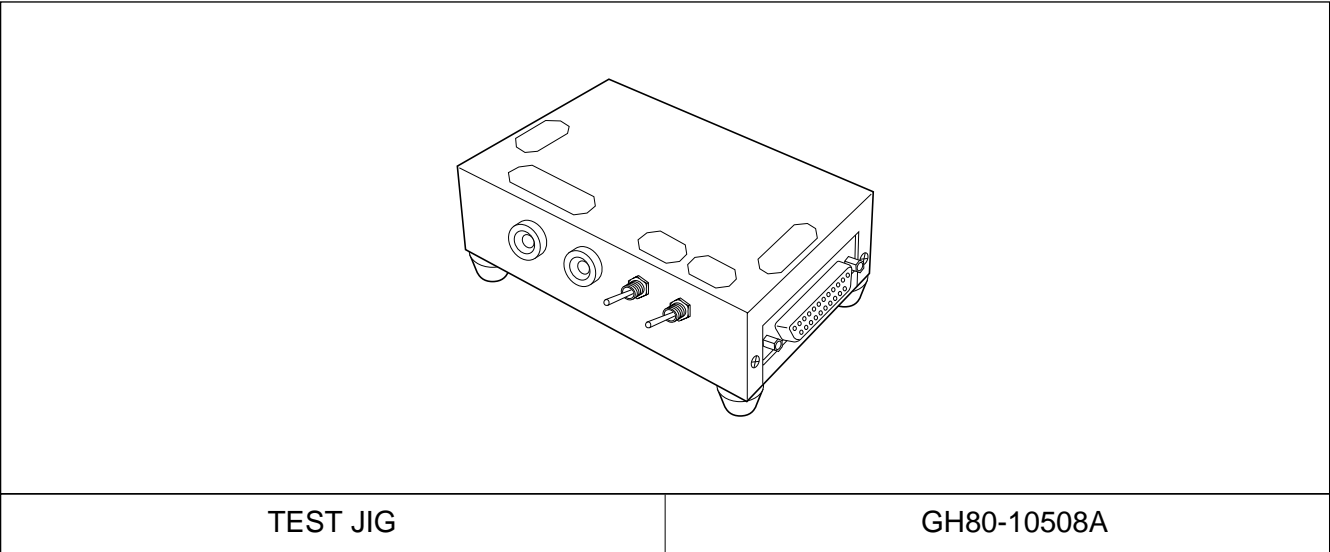
1-5 Ciger Light Adapter



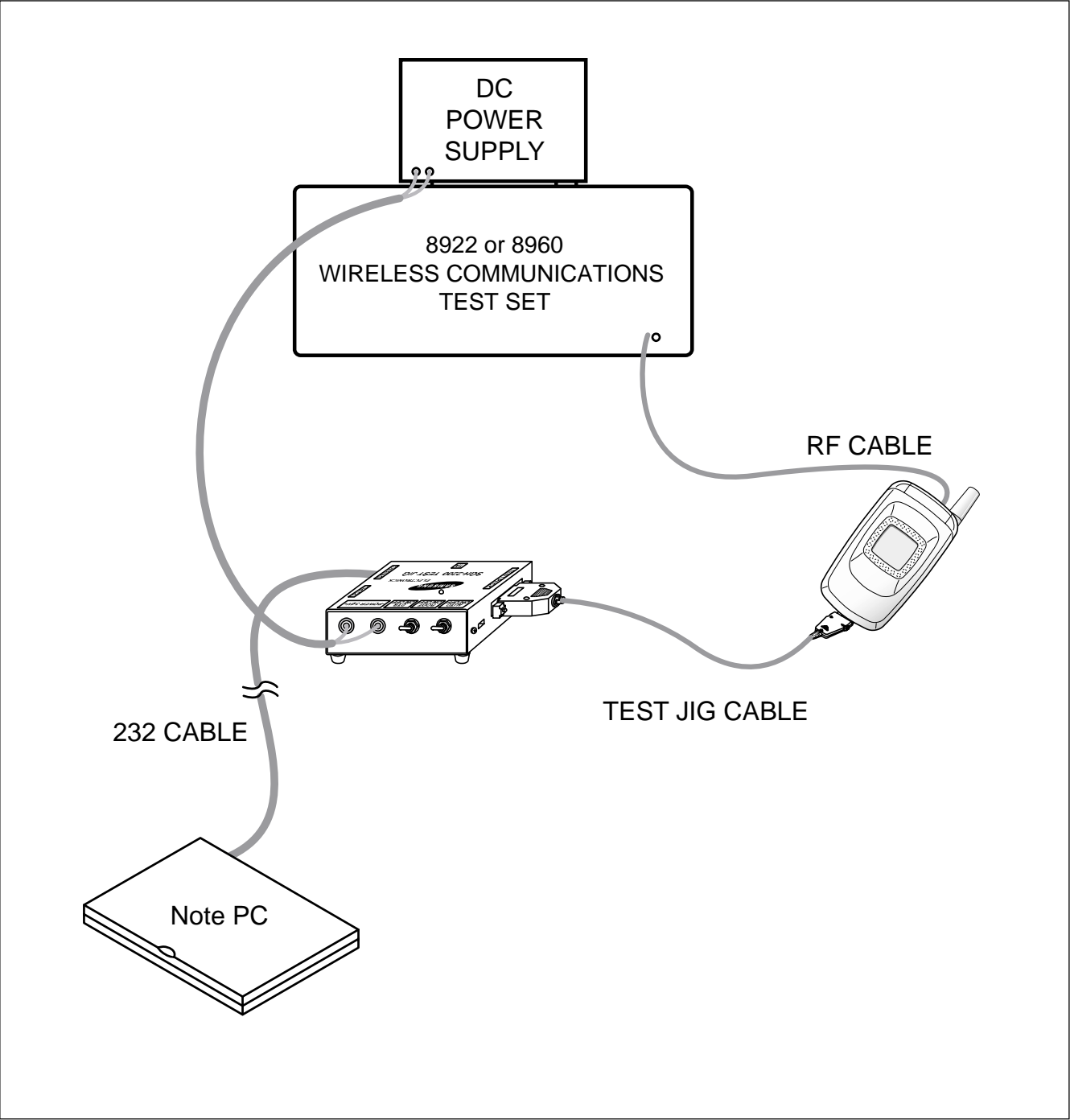
1-6 Ciger Light Adapter Parts List

DESCRIPTION	SEC CODE	REMARK
Ciger Light Adapter Code	GH44-00170A	BLACK

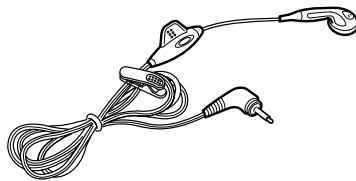
1-7 Test Jig



1-7-1 Test Jig



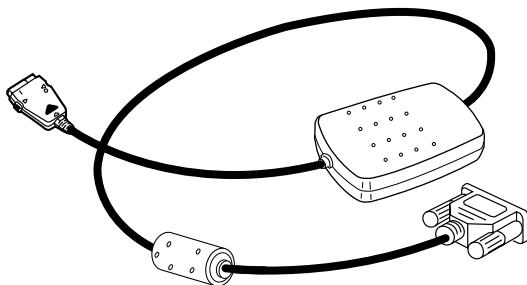
1-8 Wearable EAR Microphone



Wearable EAR MICROPHONE

GH59-00322A

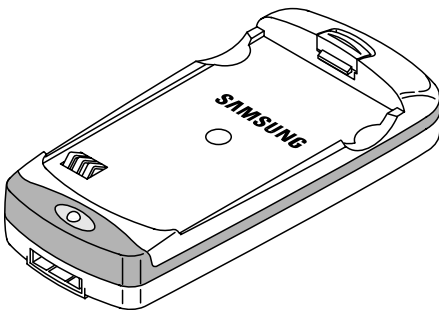
1-9 Data Kit



DATA KIT

GH39-00078A

1-10 Battery Charger

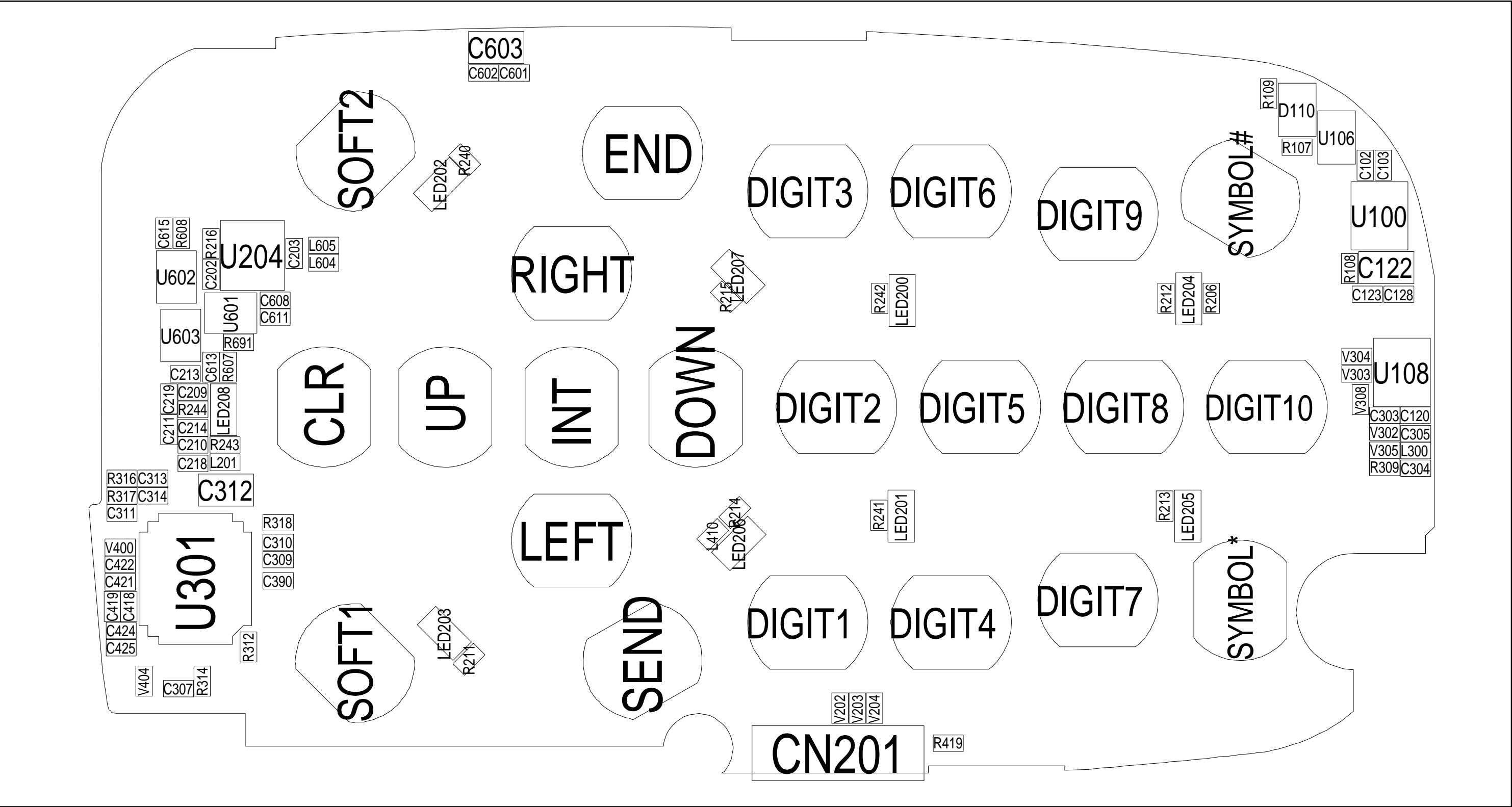


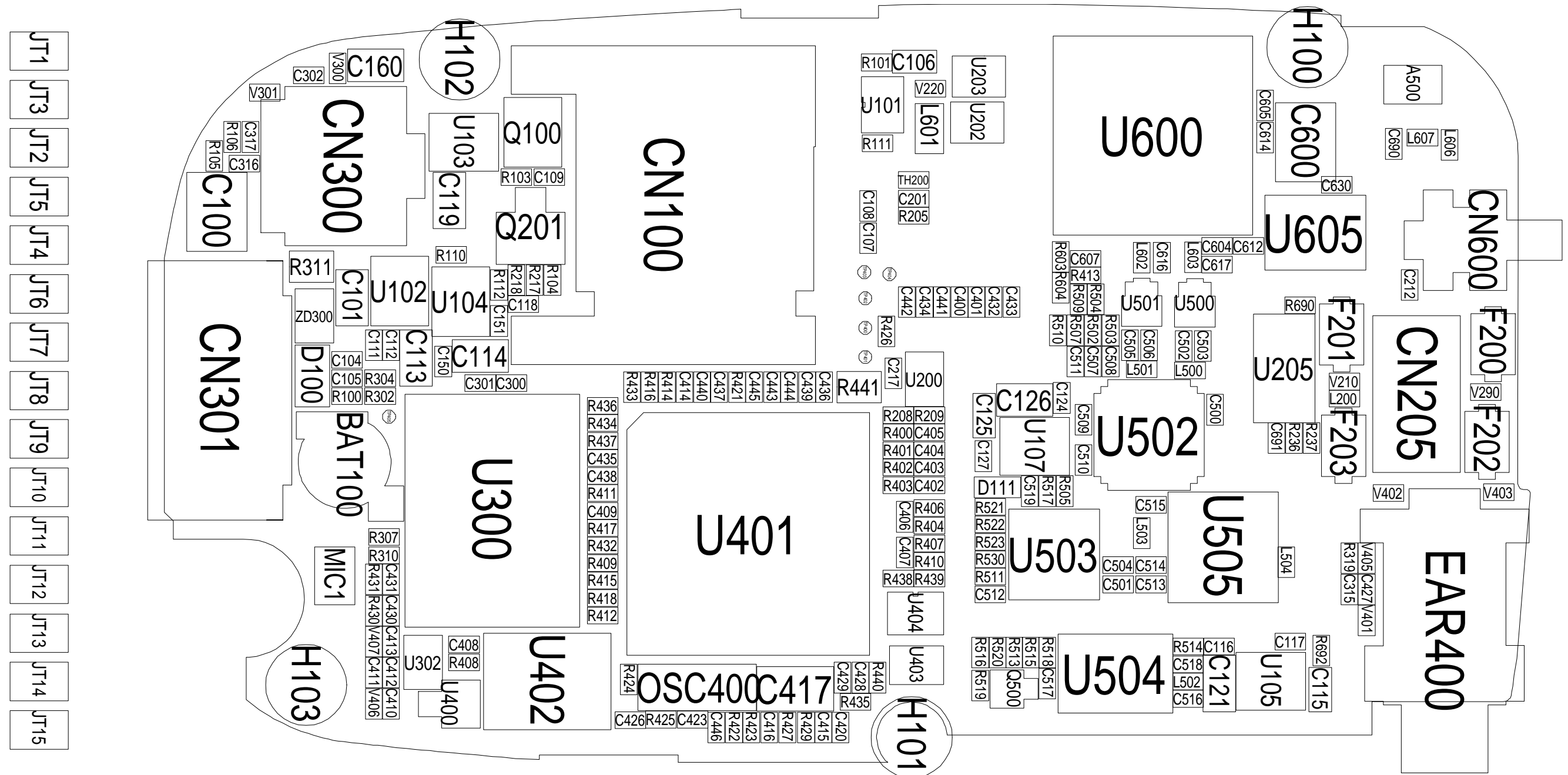
BATTERY CHAGER

GH44-00234A

2. PCB Diagrams

2-1 Main Top





3. Electrical Parts List

3-1 Main Parts List Top

LEVEL	SEC CODE	REFERENCE
2	0601-001611	LED200
2	0601-001611	LED201
2	0601-001611	LED202
2	0601-001611	LED203
2	0601-001611	LED204
2	0601-001611	LED205
2	0601-001611	LED206
2	0601-001611	LED207
2	0601-001611	LED208
2	0407-001007	D110
2	0504-001042	U601
2	0504-001042	U602
2	0504-001042	U603
2	0506-001004	U106
2	1009-001010	U204
2	1203-002077	U100
2	1203-002156	U108
2	1204-001960	U301
2	1405-001082	V305
2	1405-001082	V400
2	1405-001082	V404
2	1405-001093	V302
2	1405-001093	V303
2	1405-001093	V304
2	1405-001093	V308
2	1405-001121	V202
2	1405-001121	V203
2	1405-001121	V204
2	2007-000138	R244
2	2007-000157	R216
2	2007-001325	R314
2	2007-007009	R243
2	2007-007107	R607
2	2007-007107	R608

LEVEL	SEC CODE	REFERENCE
2	2007-007137	R317
2	2007-007309	R691
2	2007-007313	R318
2	2007-007771	R312
2	2007-007771	R316
2	2007-000162	R419
2	2007-007009	R211
2	2007-007009	R212
2	2007-001290	R241
2	2007-001290	R241
2	2007-007009	R215
2	2007-007009	R240
2	2007-001290	R241
2	2007-007009	R242
2	2007-007771	R206
2	2007-000148	R309
2	2007-000162	R107
2	2007-000162	R108
2	2007-000162	R109
2	2203-000438	C307
2	2203-005061	C309
2	2203-005061	C310
2	2203-002687	C314
2	2203-000679	C209
2	2203-000679	C210
2	2203-000679	C211
2	2203-000679	C213
2	2203-000679	C214
2	2203-000679	C218
2	2203-000679	C219
2	2203-000854	C421
2	2203-000854	C424
2	2203-001017	C422
2	2203-001017	C425

LEVEL	SEC CODE	REFERENCE
2	2203-005061	C313
2	2203-005483	C311
2	2203-000438	C608
2	2203-000679	C611
2	2203-000679	C613
2	2203-000679	C615
2	2203-000812	C601
2	2203-002443	C203
2	2203-005061	C202
2	2404-001086	C312
2	2203-000233	C602
2	2404-001105	C603
2	2203-000679	C303
2	2203-000679	C304
2	2203-005061	C305
2	2203-000254	C103
2	2203-000254	C120
2	2203-005061	C102
2	2203-005061	C123
2	2203-005061	C128
2	2404-001105	C122
2	2007-007771	L604
2	2007-007771	L605
2	3301-001362	L201

3-2 Main Parts List Bottom

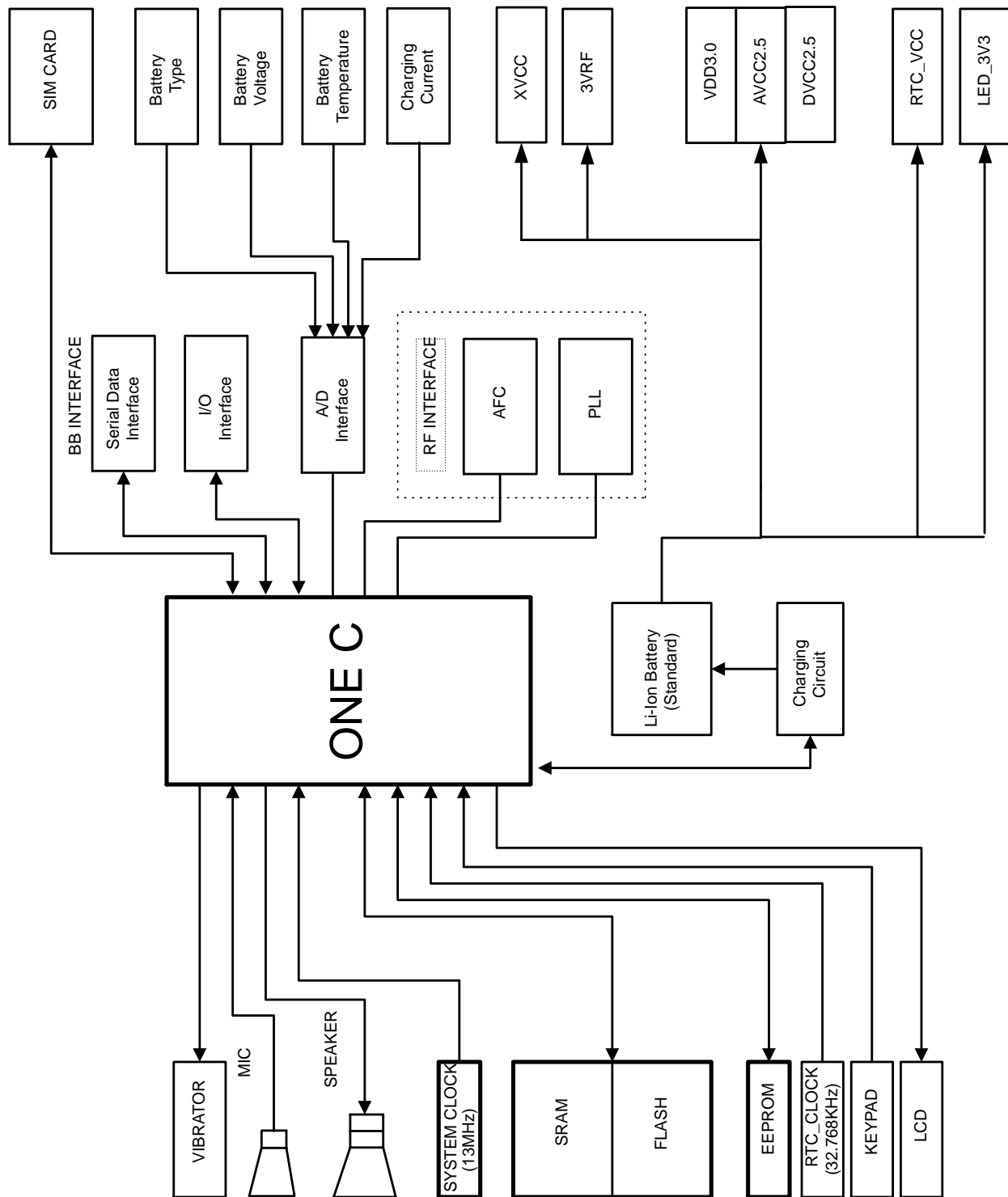
LEVEL	SEC CODE	REFERENCE
2	0601-001611	LED200
2	0601-001611	LED201
2	0601-001611	LED202
2	0601-001611	LED203
2	0601-001611	LED204
2	0601-001611	LED205
2	0601-001611	LED206
2	0601-001611	LED207
2	0601-001611	LED208
2	0407-001007	D110
2	0504-001042	U601
2	0504-001042	U602
2	0504-001042	U603
2	0506-001004	U106
2	1009-001010	U204
2	1203-002077	U100
2	1203-002156	U108
2	1204-001960	U301
2	1405-001082	V305
2	1405-001082	V400
2	1405-001082	V404
2	1405-001093	V302
2	1405-001093	V303
2	1405-001093	V304
2	1405-001093	V308
2	1405-001121	V202
2	1405-001121	V203
2	1405-001121	V204
2	2007-000138	R244
2	2007-000157	R216
2	2007-001325	R314
2	2007-007009	R243
2	2007-007107	R607
2	2007-007107	R608
2	2007-007137	R317
2	2007-007309	R691

LEVEL	SEC CODE	REFERENCE
2	2007-007313	R318
2	2007-007771	R312
2	2007-007771	R316
2	2007-000162	R419
2	2007-007009	R211
2	2007-007009	R212
2	2007-001290	R241
2	2007-001290	R241
2	2007-007009	R215
2	2007-007009	R240
2	2007-001290	R241
2	2007-007009	R242
2	2007-007771	R206
2	2007-000148	R309
2	2007-000162	R107
2	2007-000162	R108
2	2007-000162	R109
2	2203-000438	C307
2	2203-005061	C309
2	2203-005061	C310
2	2203-002687	C314
2	2203-000679	C209
2	2203-000679	C210
2	2203-000679	C211
2	2203-000679	C213
2	2203-000679	C214
2	2203-000679	C218
2	2203-000679	C219
2	2203-000854	C421
2	2203-000854	C424
2	2203-001017	C422
2	2203-001017	C425
2	2203-005061	C313
2	2203-005483	C311
2	2203-000438	C608
2	2203-000679	C611

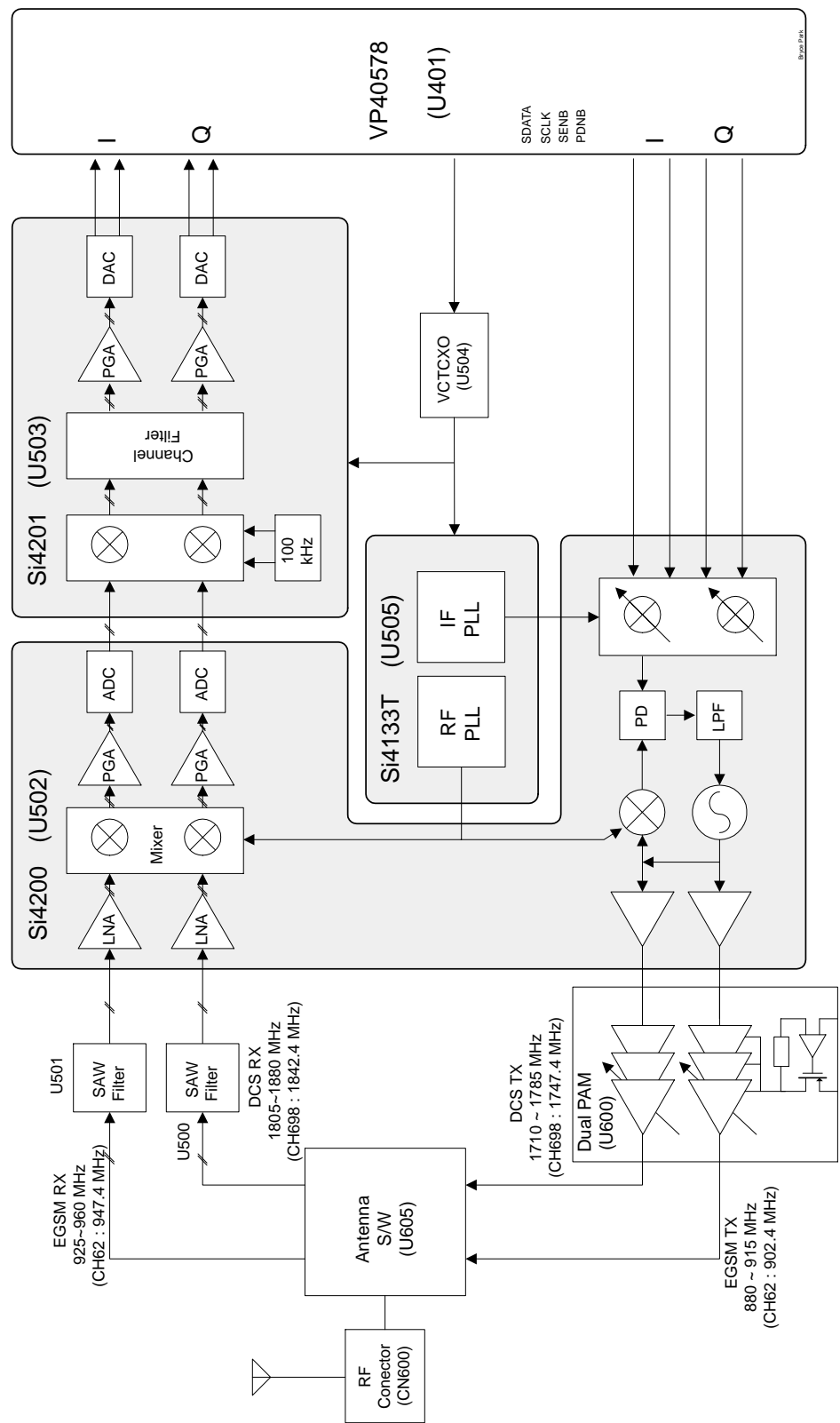
LEVEL	SEC CODE	REFERENCE
2	2203-000679	C613
2	2203-000679	C615
2	2203-000812	C601
2	2203-002443	C203
2	2203-005061	C202
2	2404-001086	C312
2	2203-000233	C602
2	2404-001105	C603
2	2203-000679	C303
2	2203-000679	C304
2	2203-005061	C305
2	2203-000254	C103
2	2203-000254	C120
2	2203-005061	C102
2	2203-005061	C123
2	2203-005061	C128
2	2404-001105	C122
2	2007-007771	L604
2	2007-007771	L605
2	3301-001362	L201

4. Block Diagrams

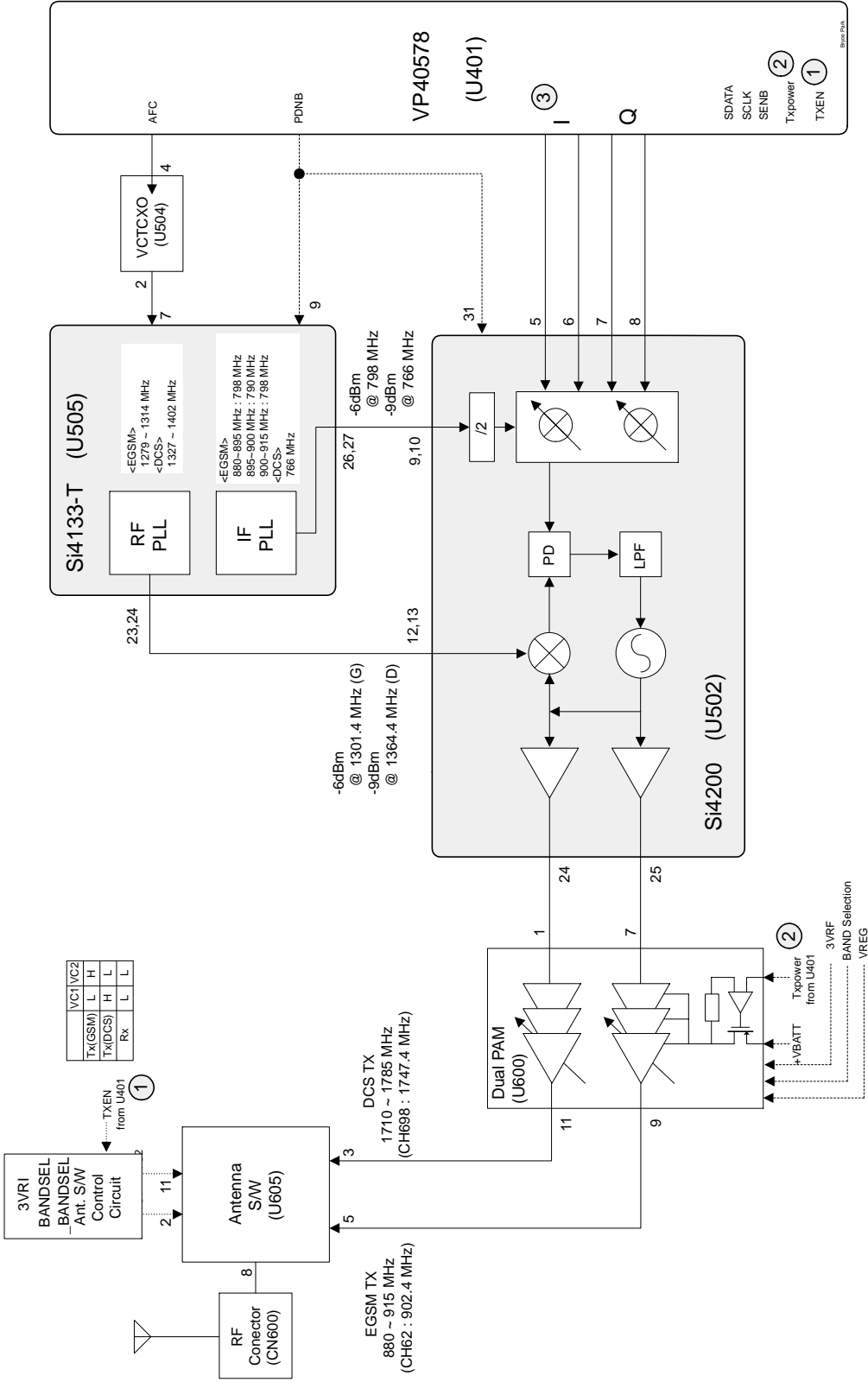
4-1 Main Baseband



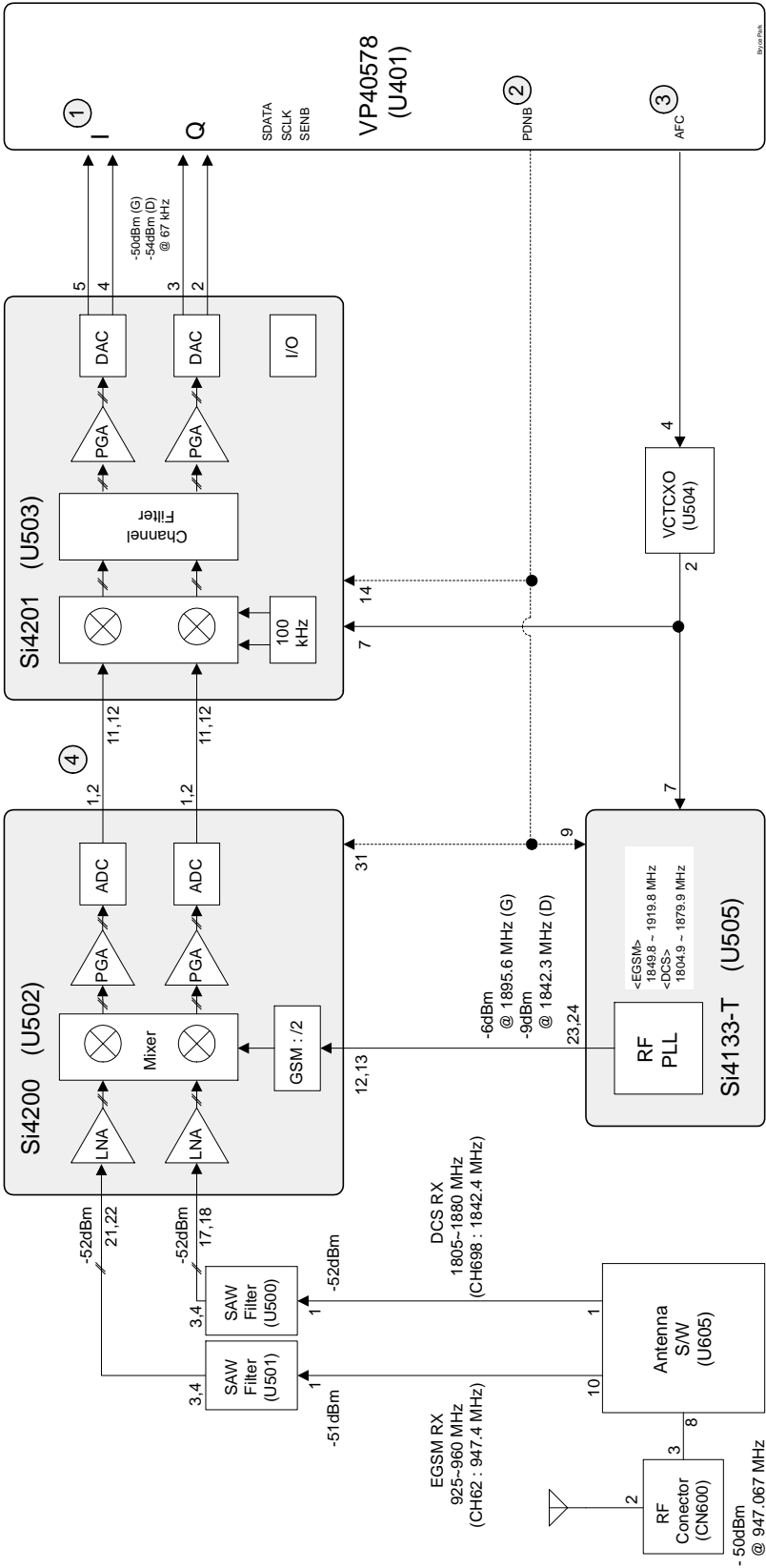
4-2 Main RF



4-2-1 RF Transmit Part

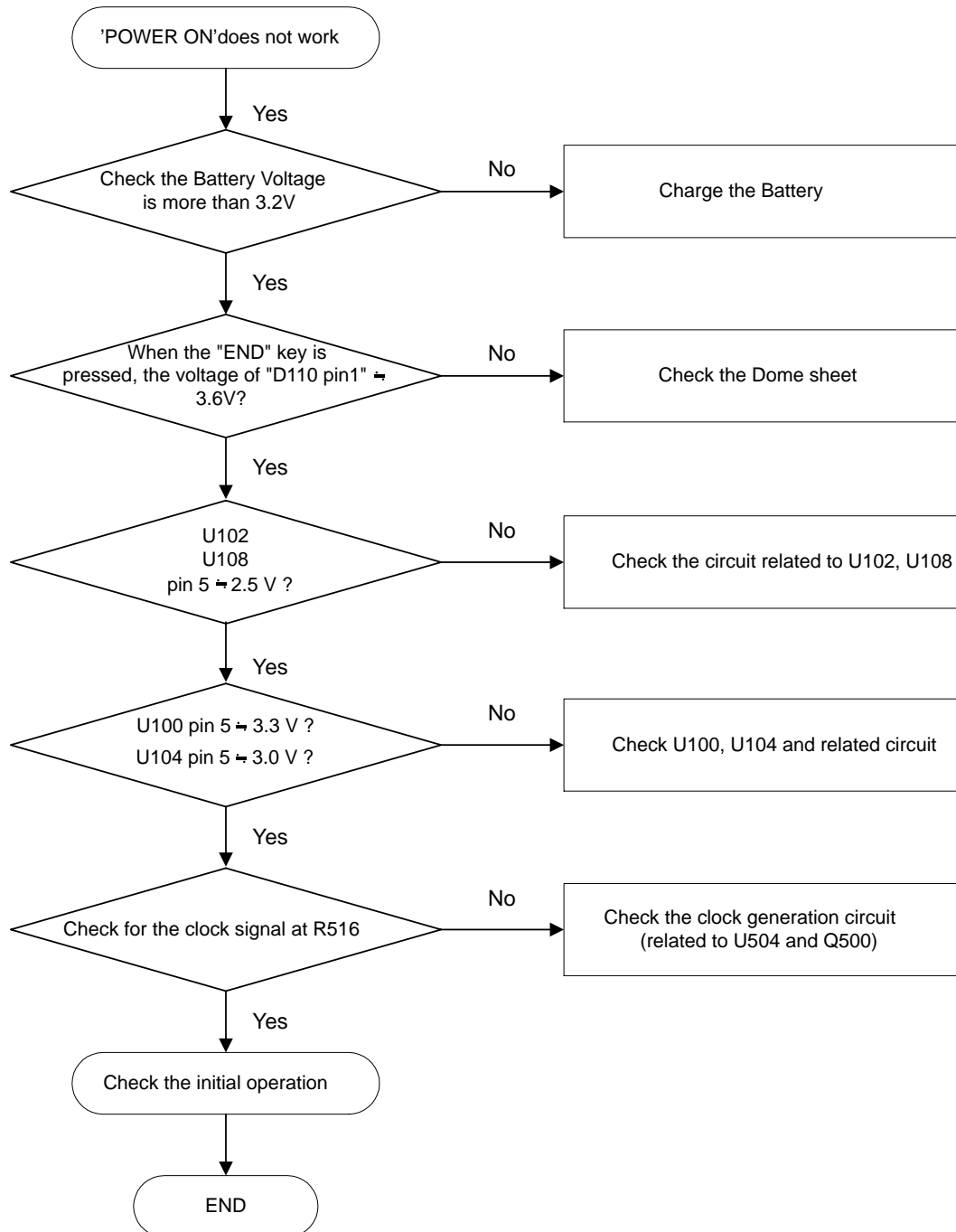


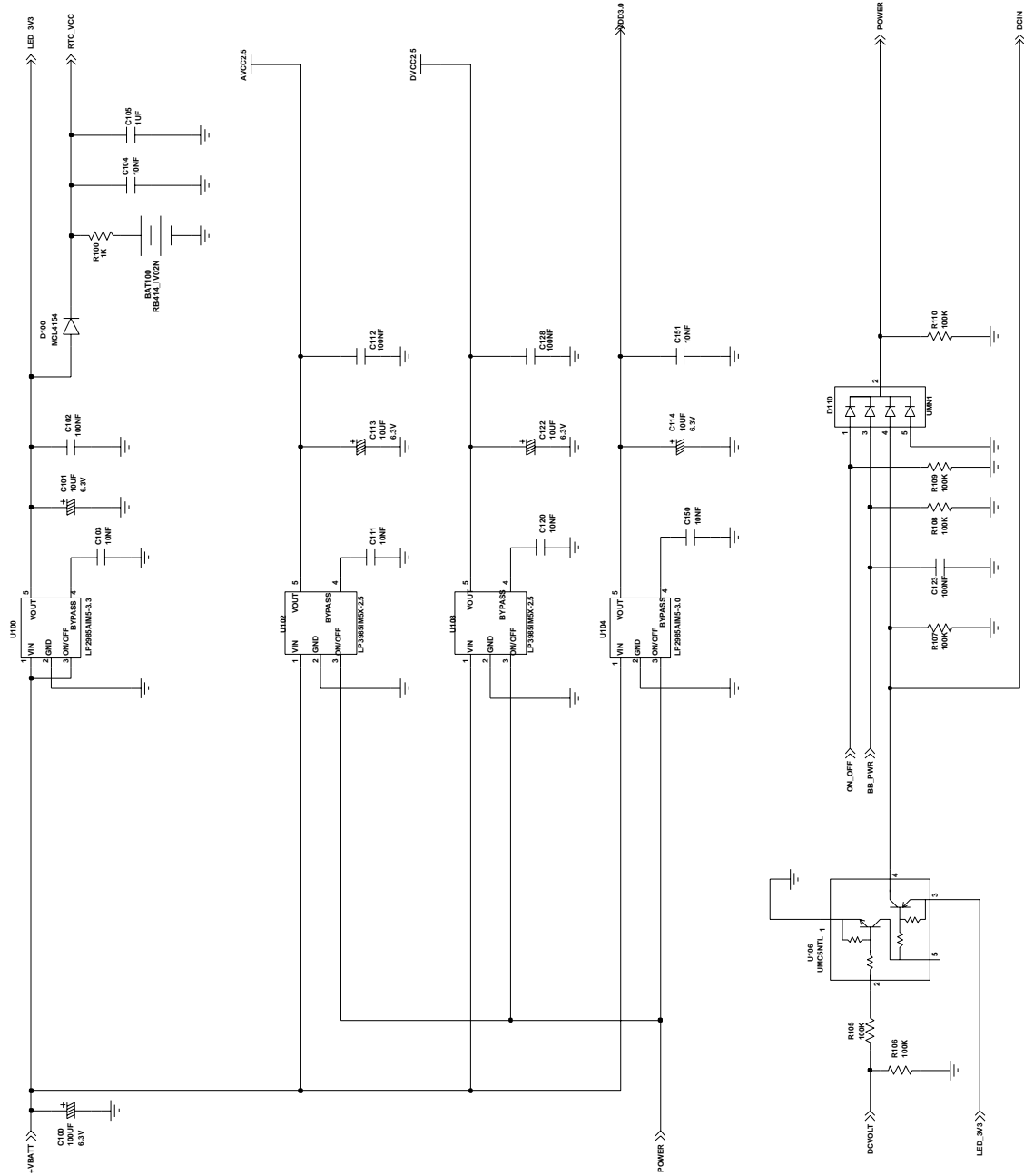
4-2-2 RF Receive Part



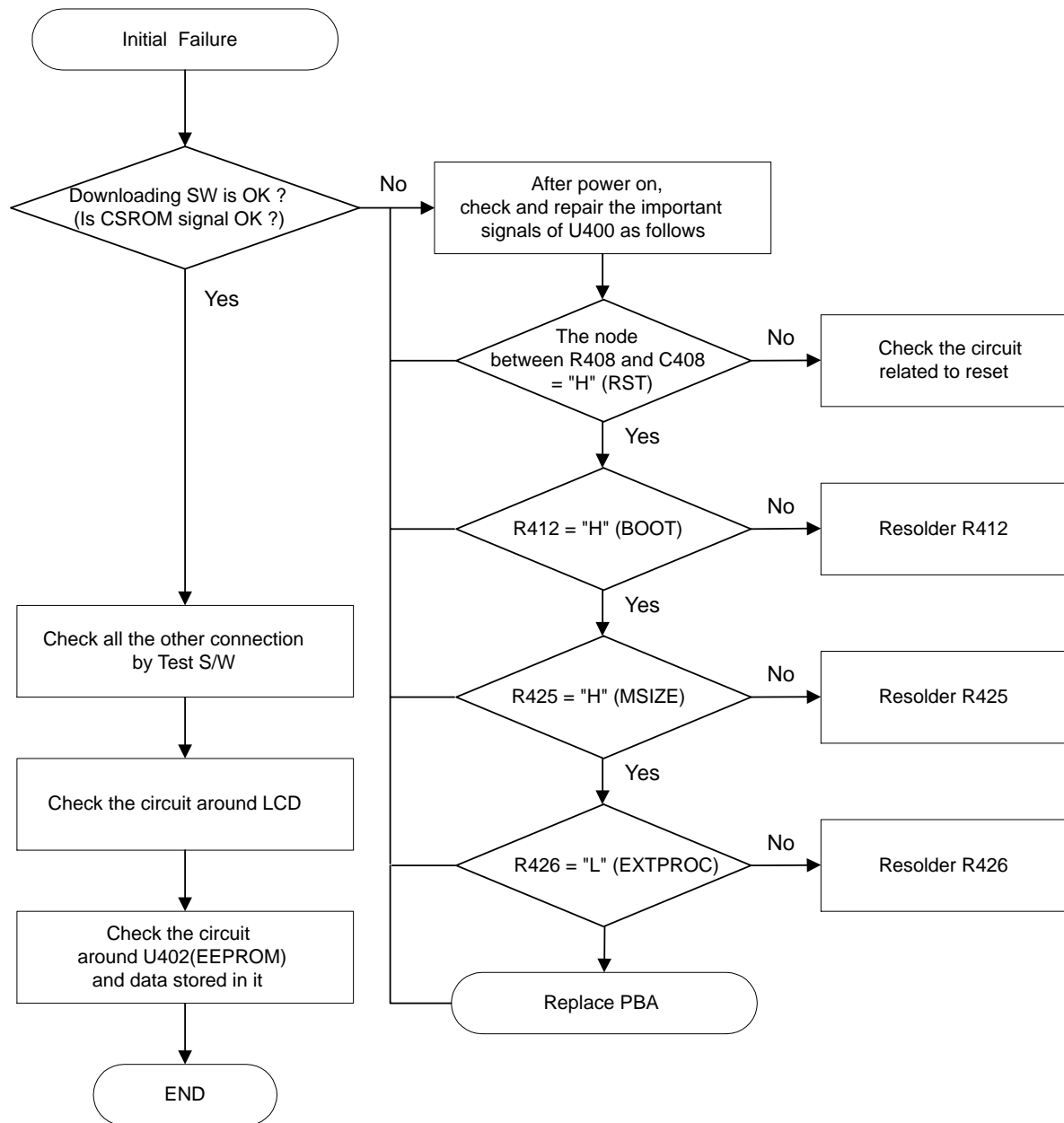
5. Flow Chart of Troubleshooting and Circuit Diagrams

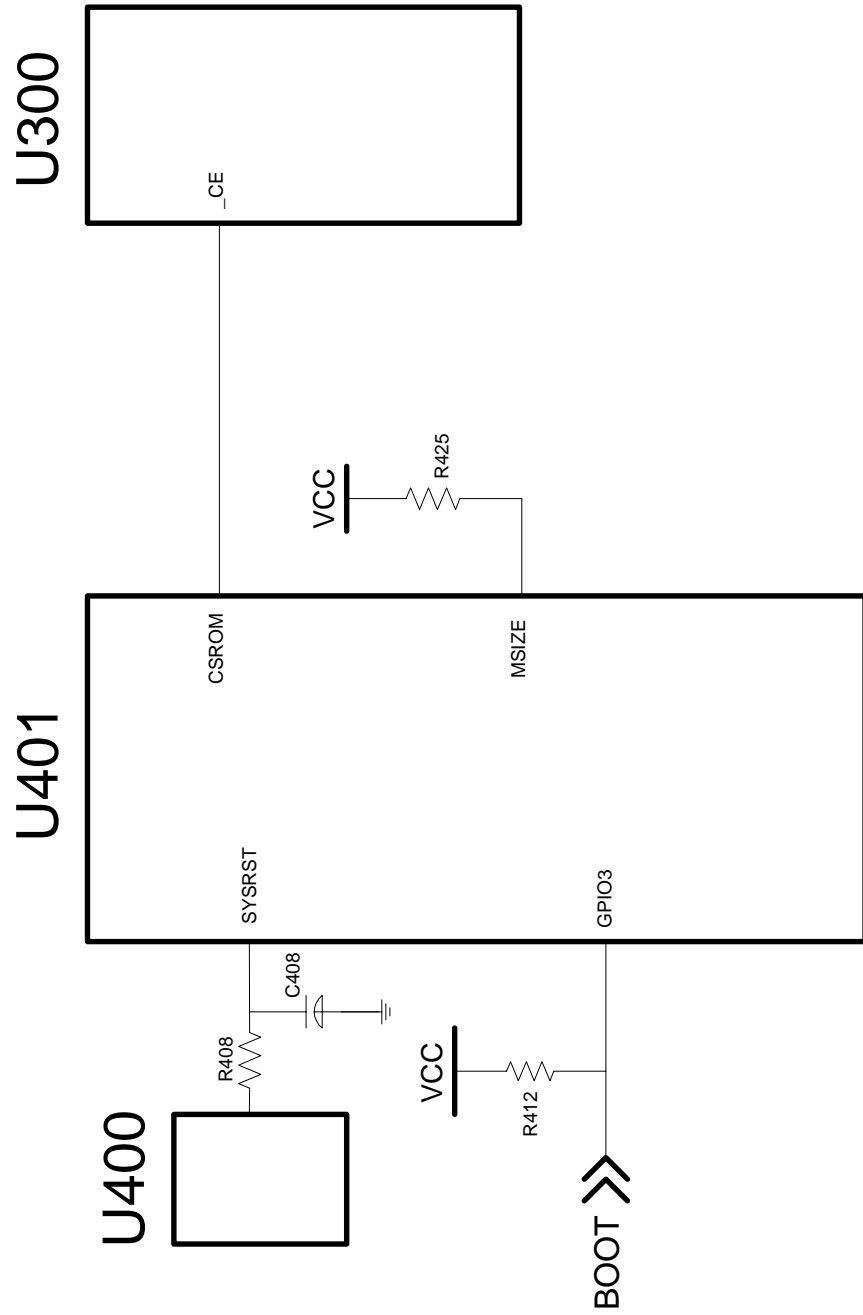
5-1 Power ON



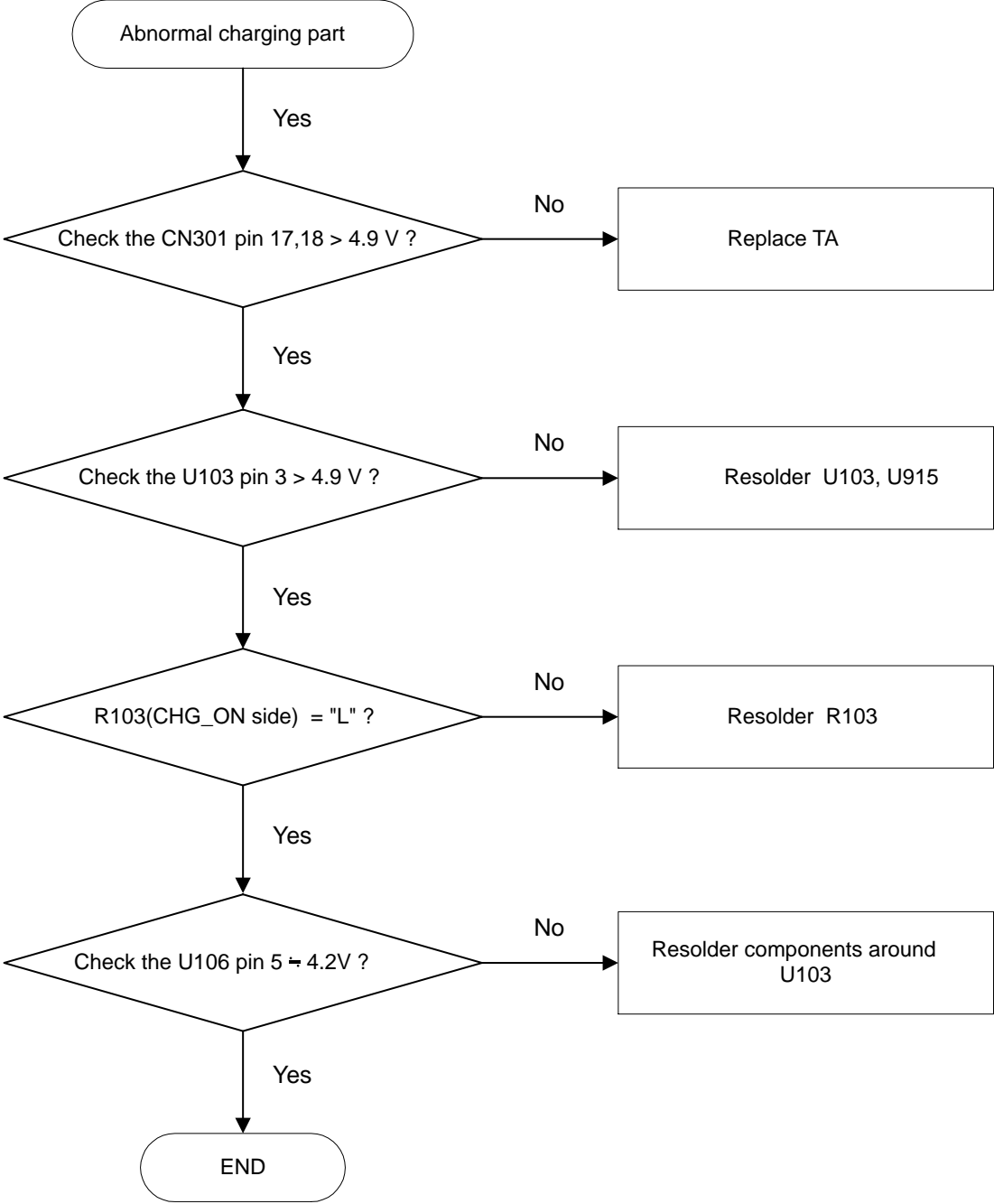


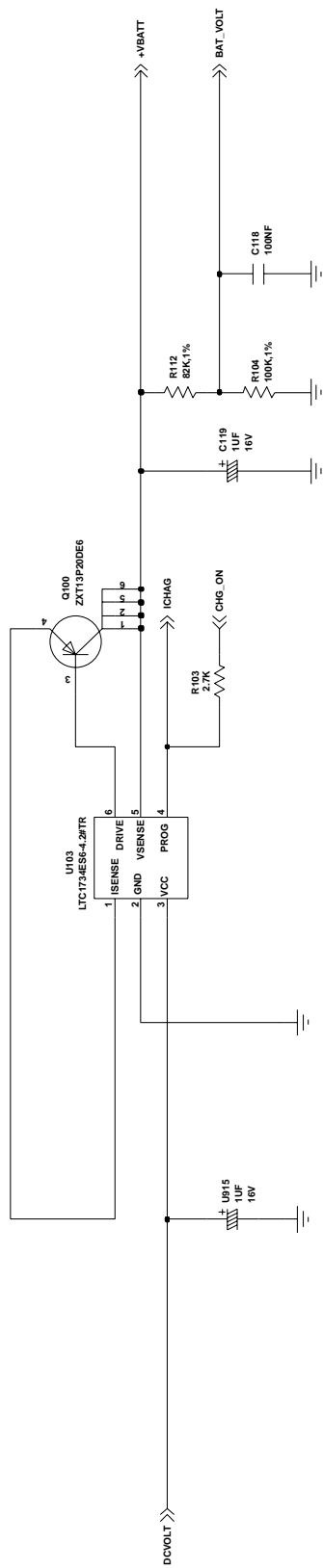
5-2 Initial



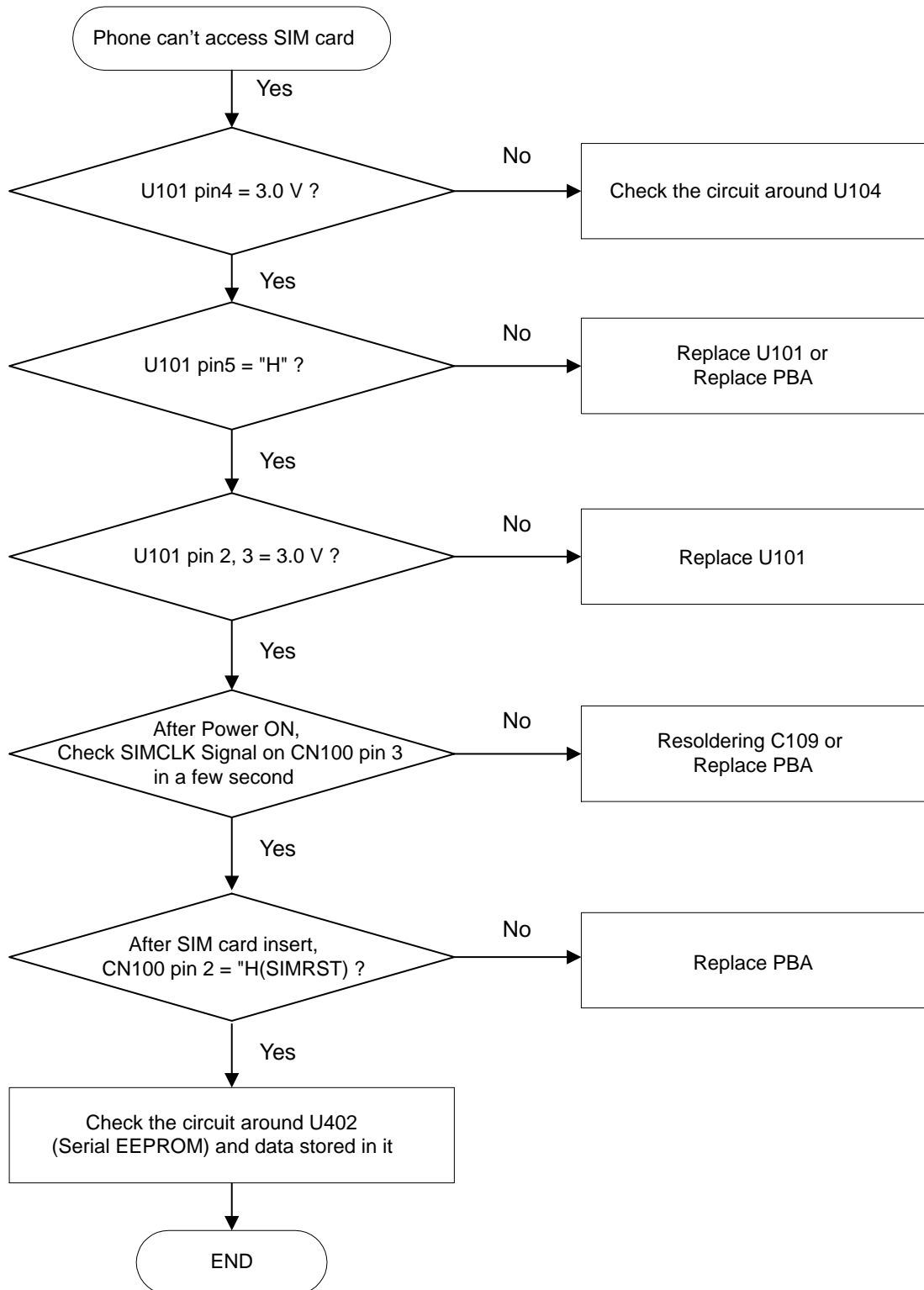


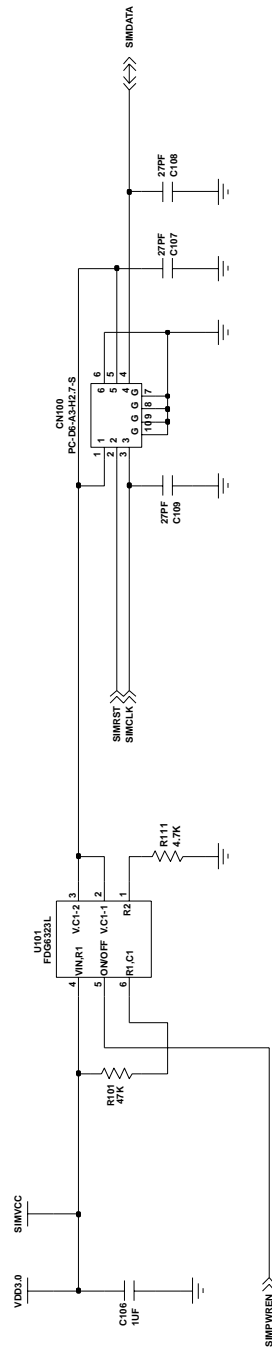
5-3 Charging Part



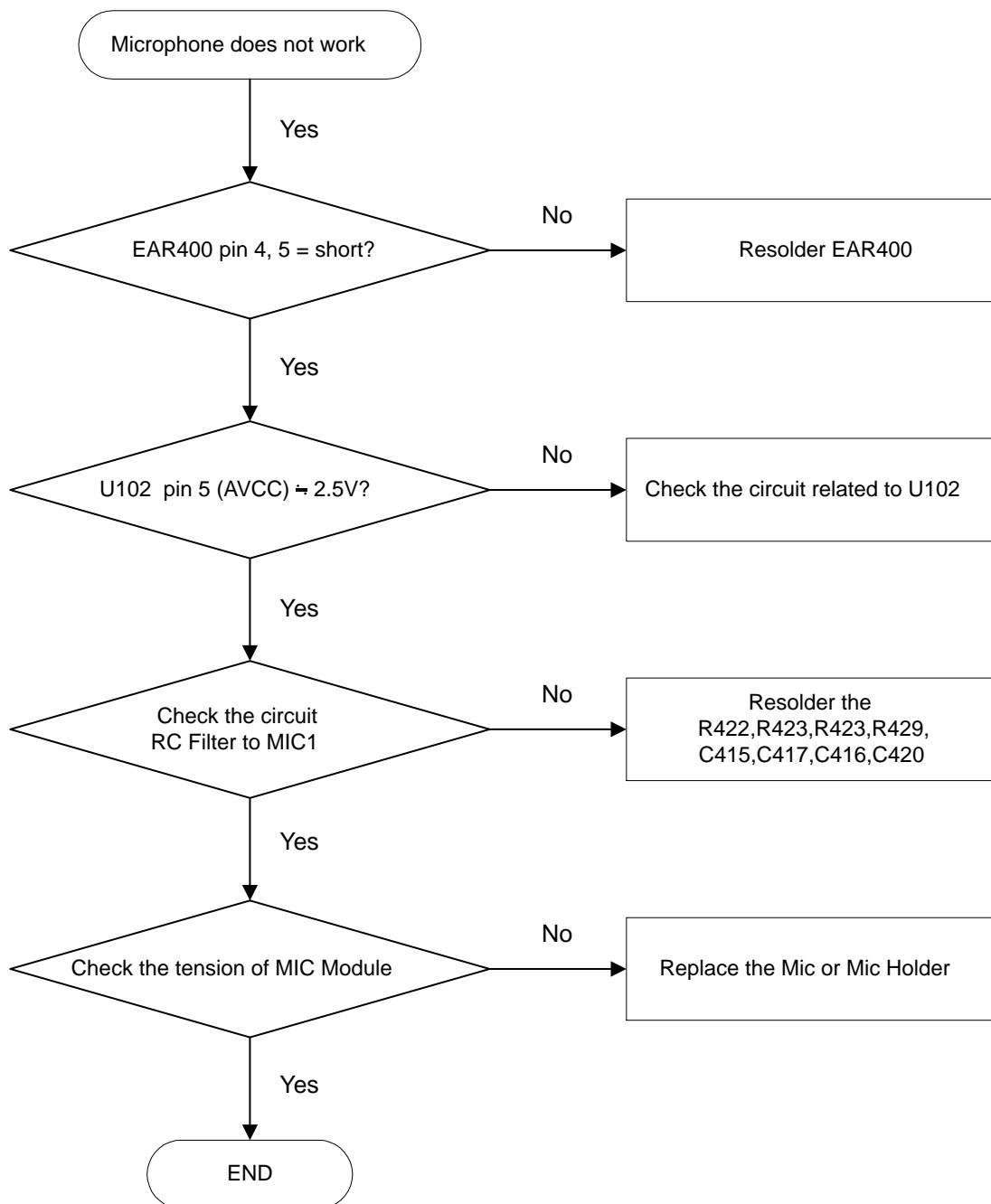


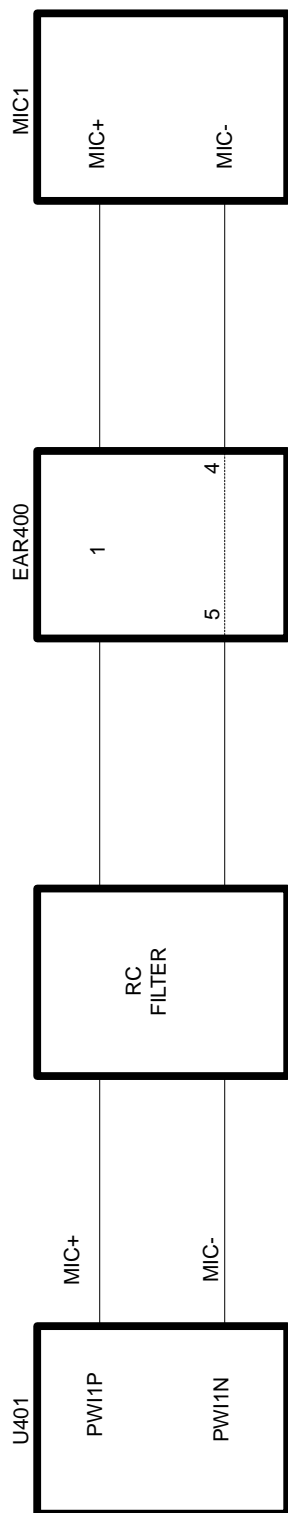
5-4 Sim Part



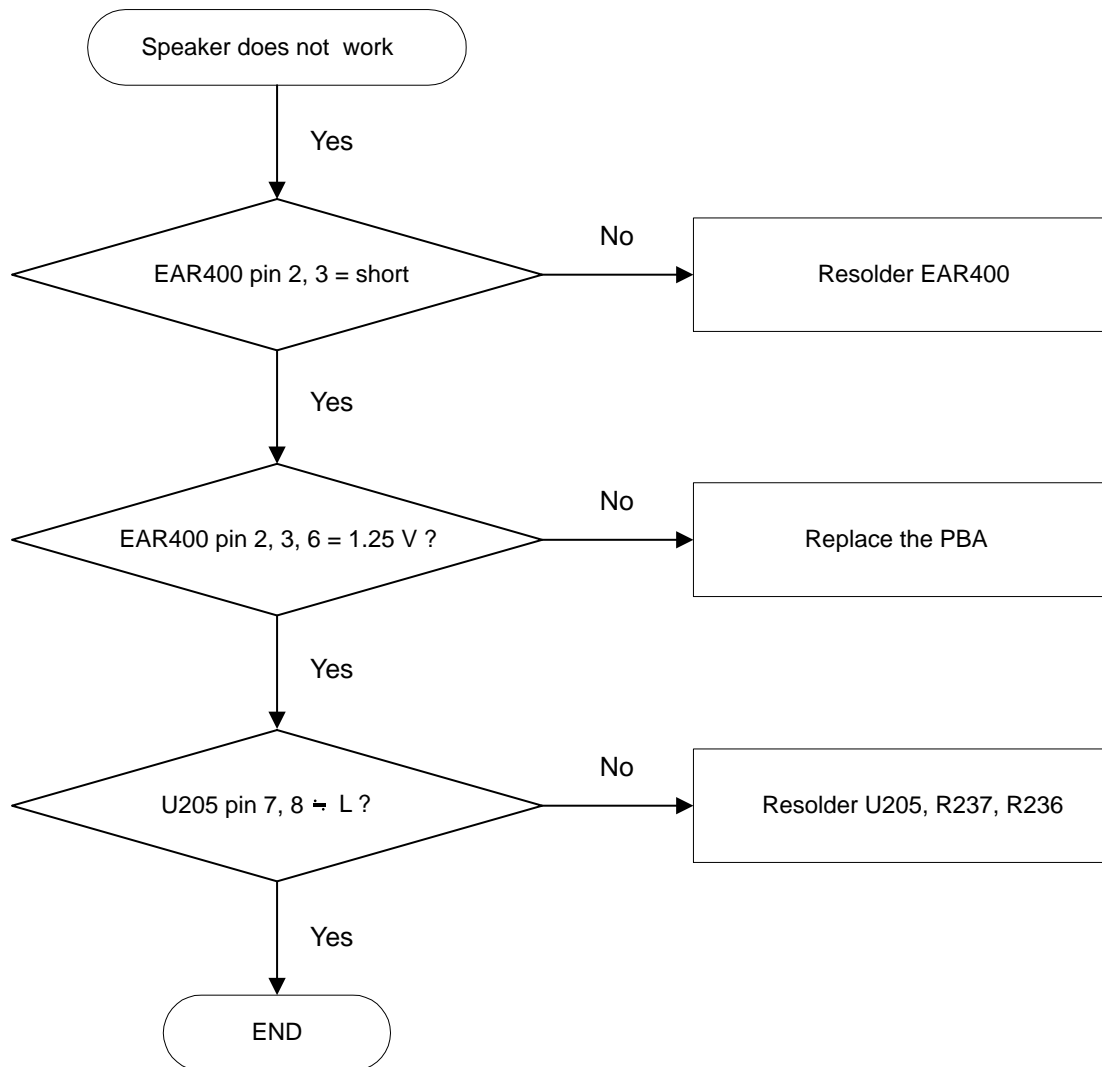


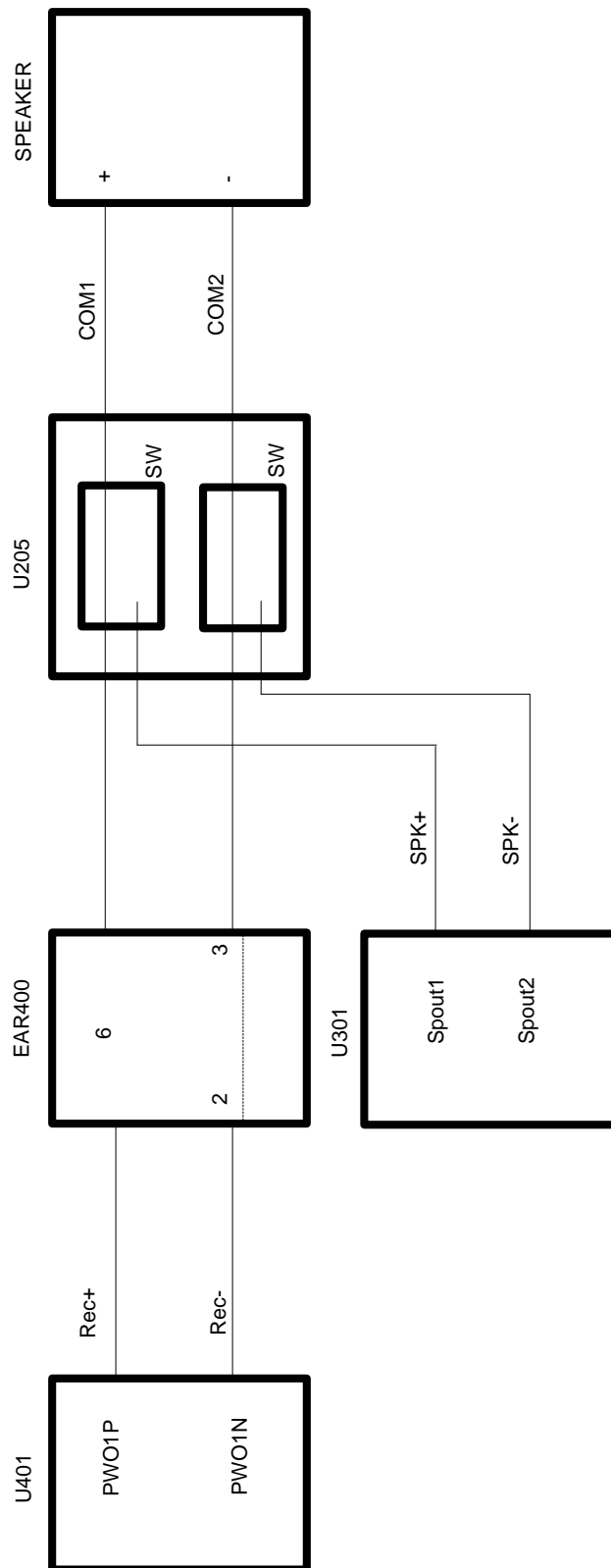
5-5 Microphone Part



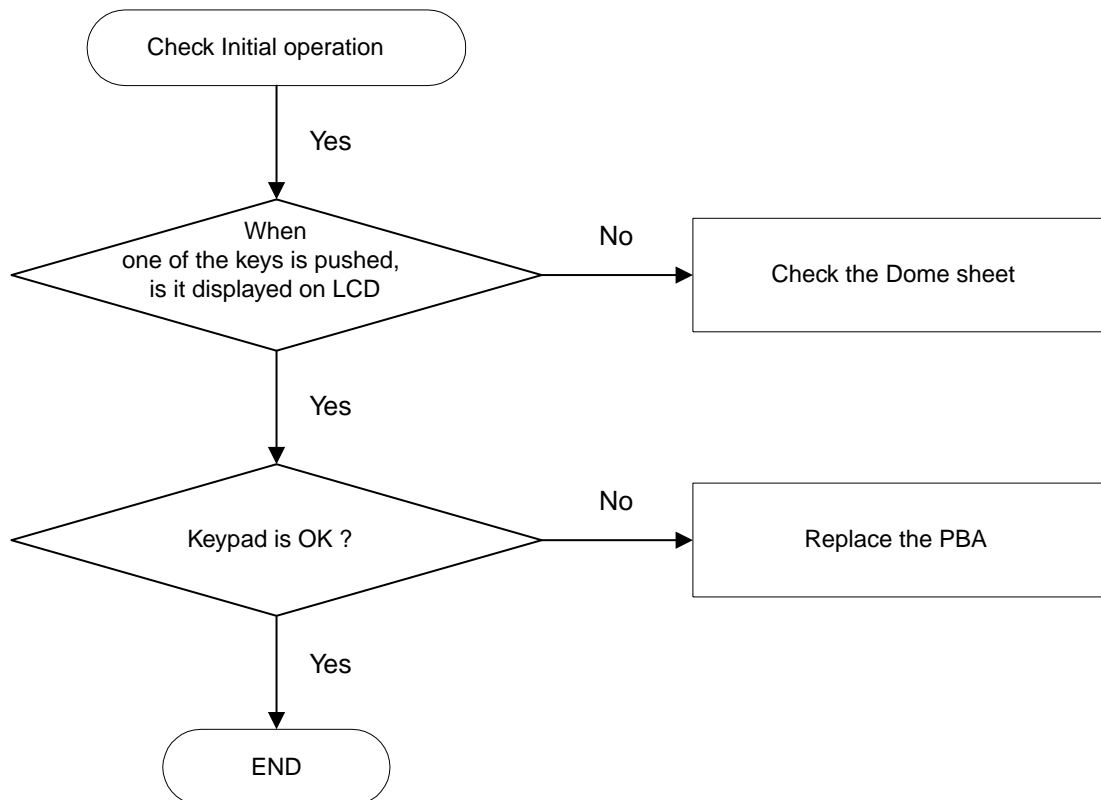


5-6 Receiver Part

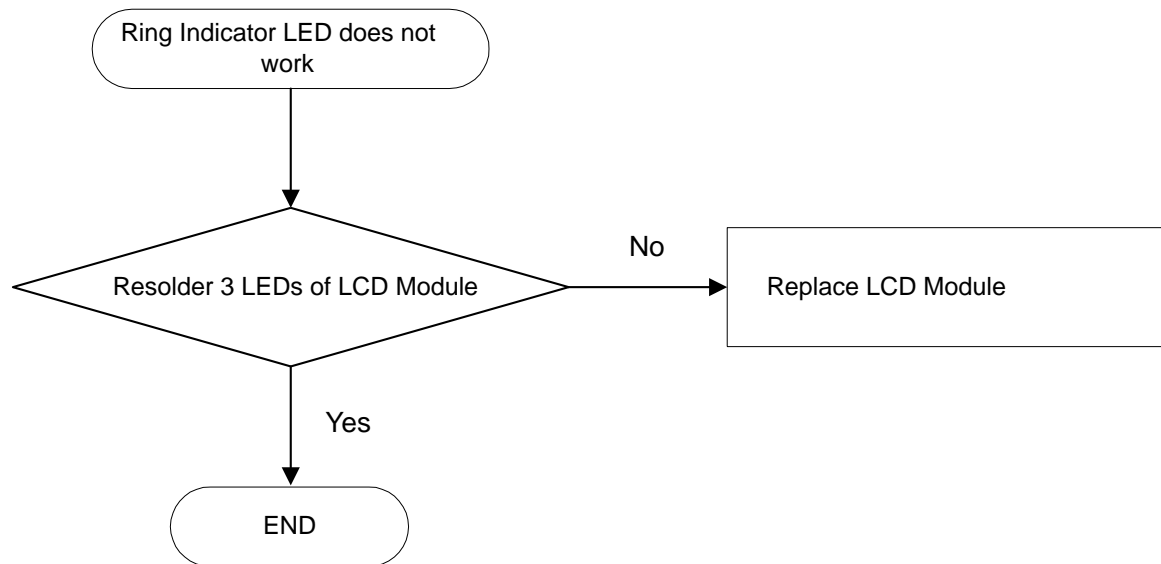




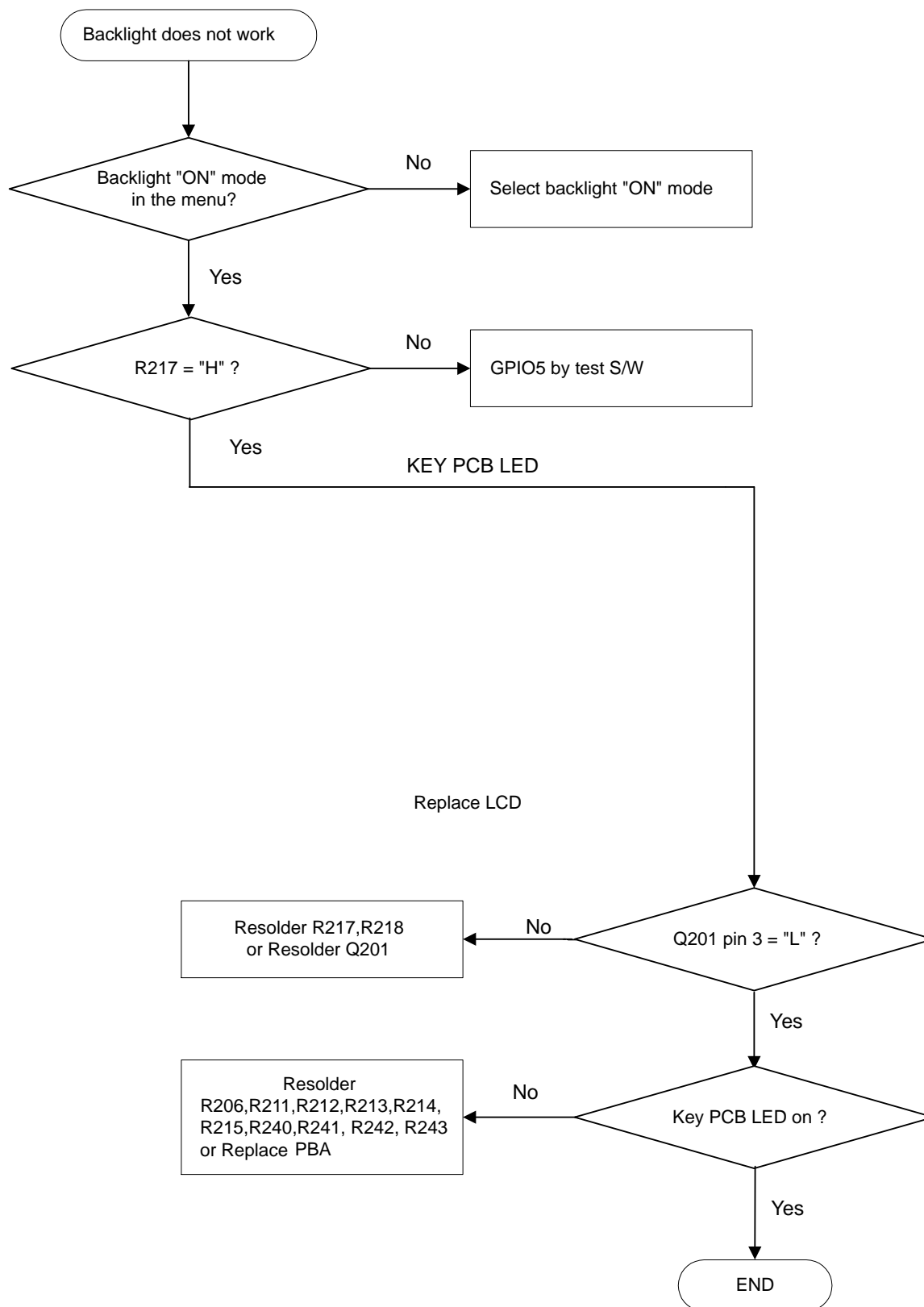
5-7 Key Data Input

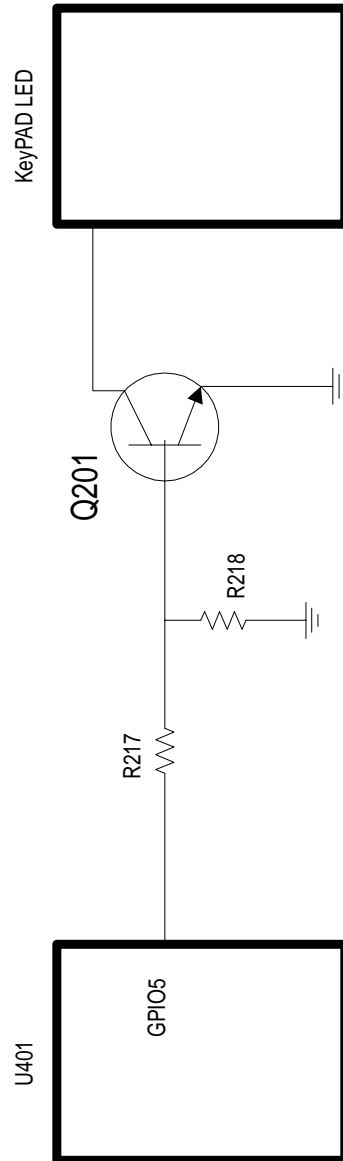


5-8 Ring Indicator

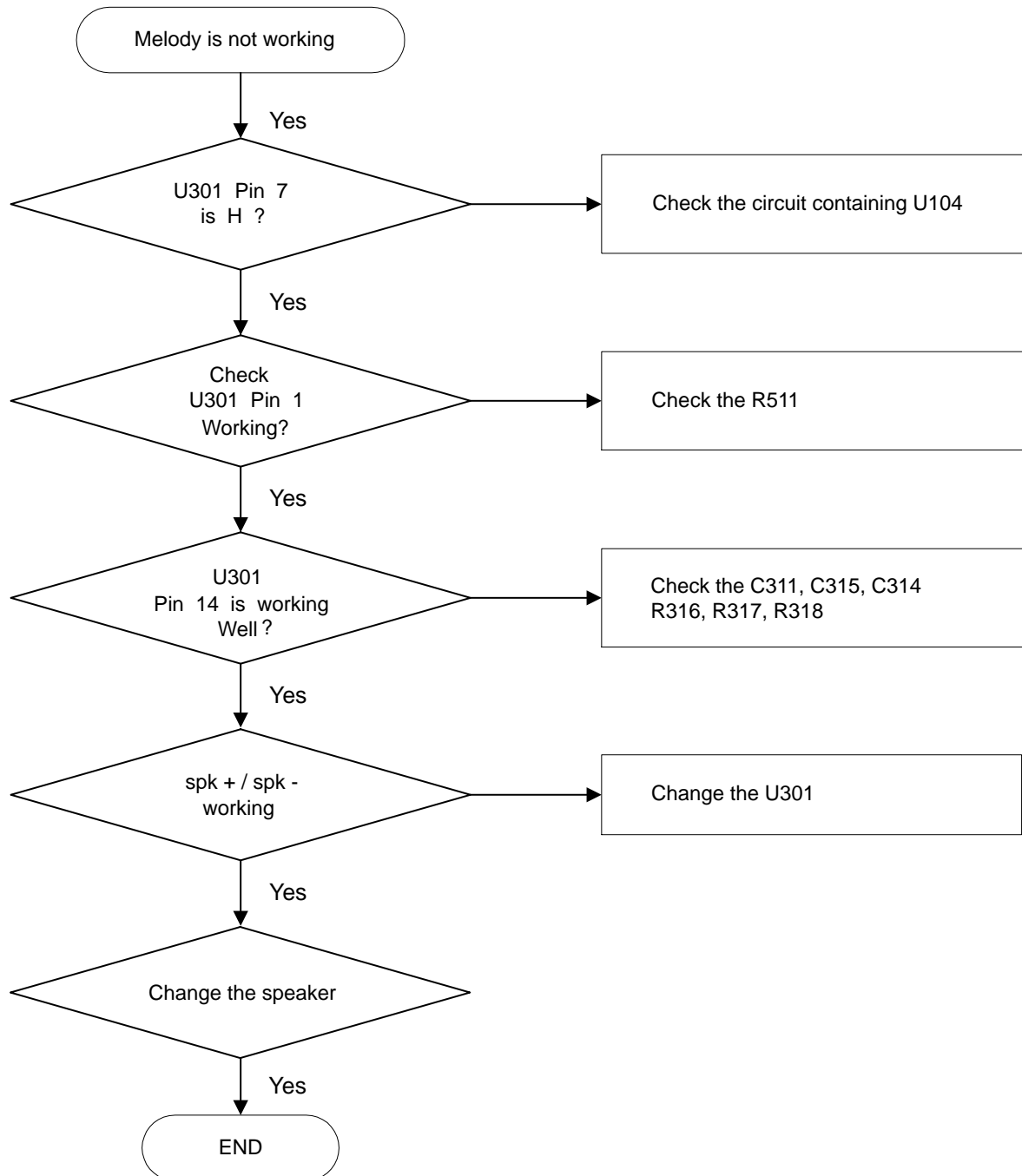


5-9 Backlight

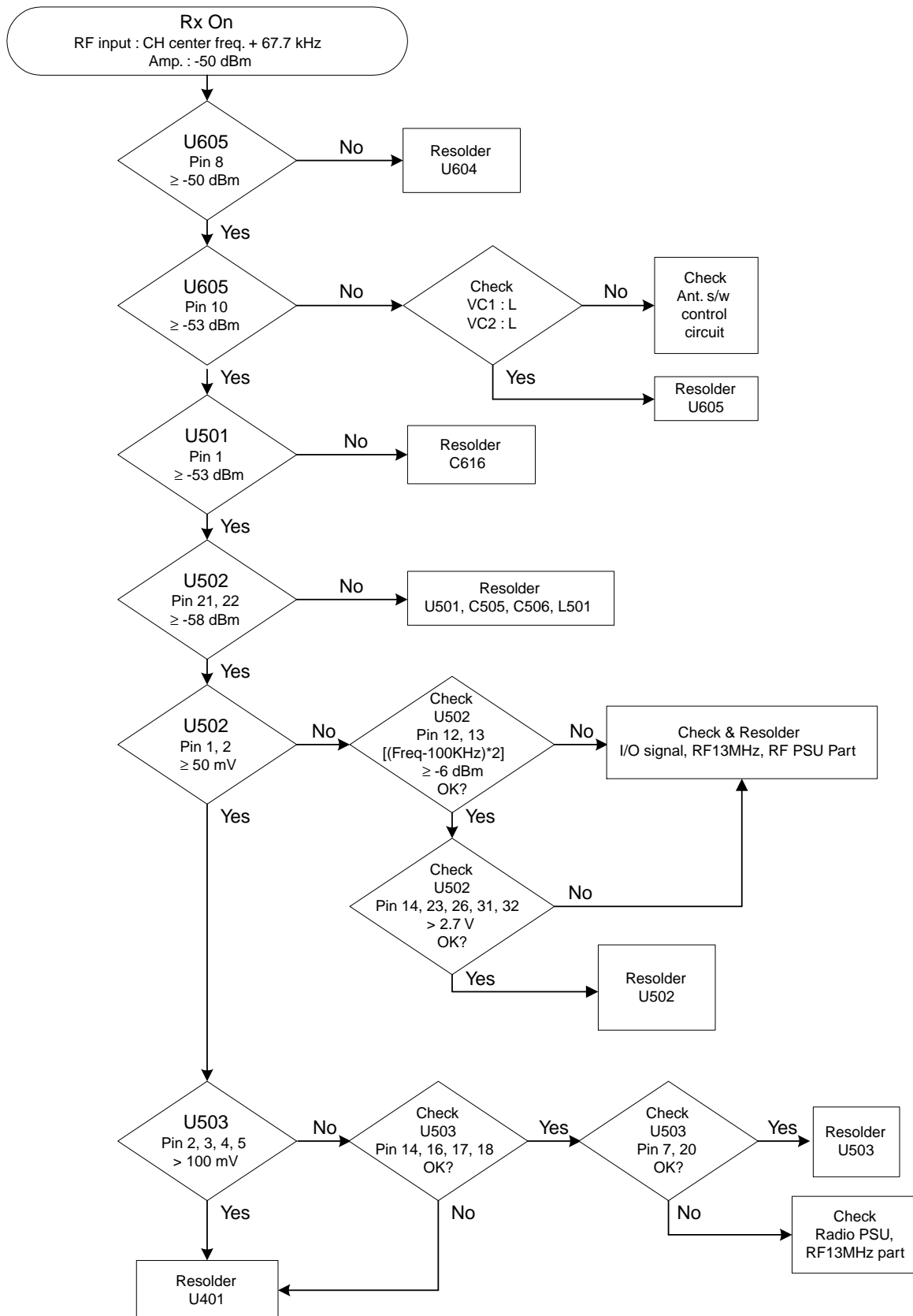




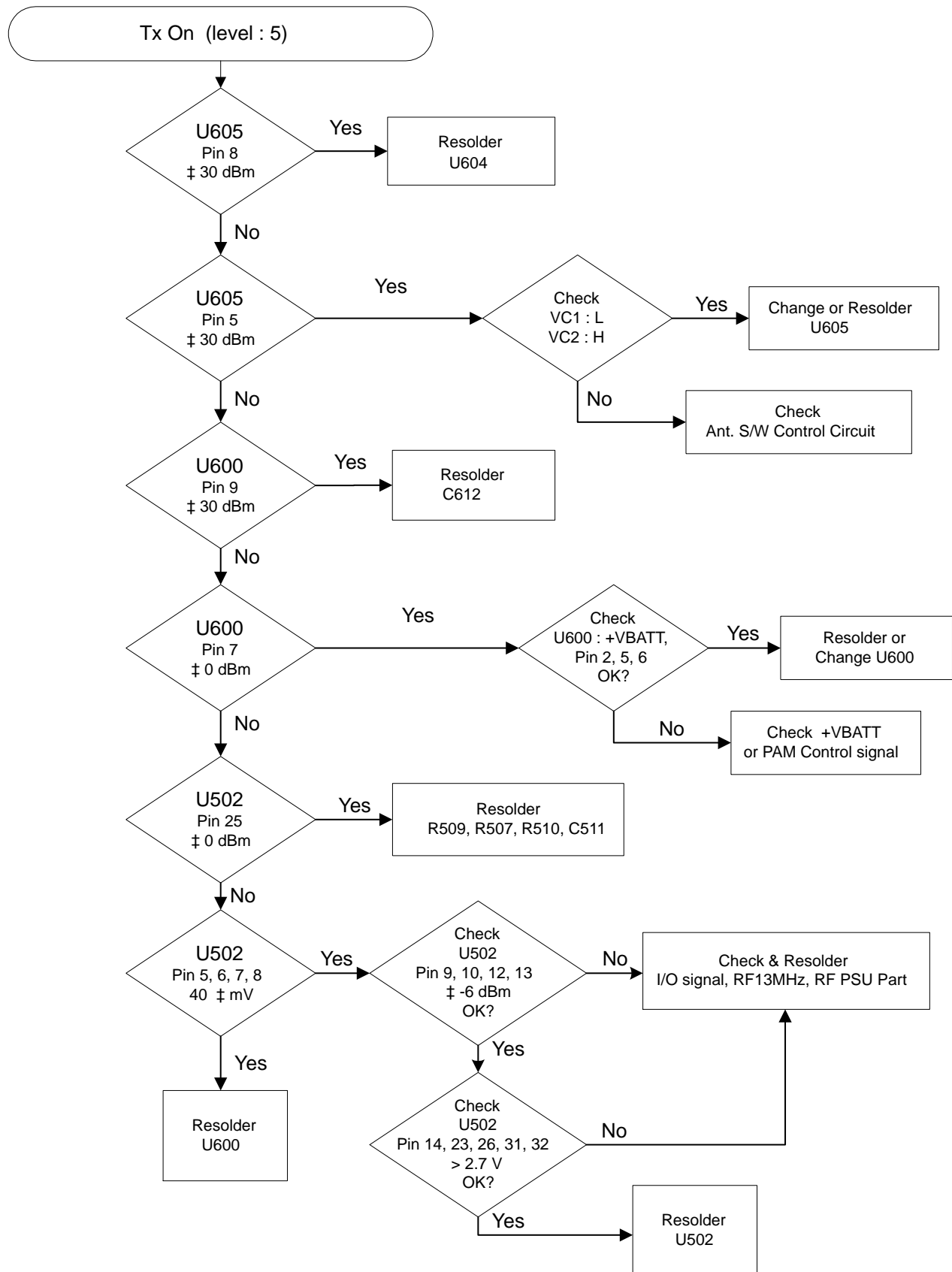
5-10 Melody Part



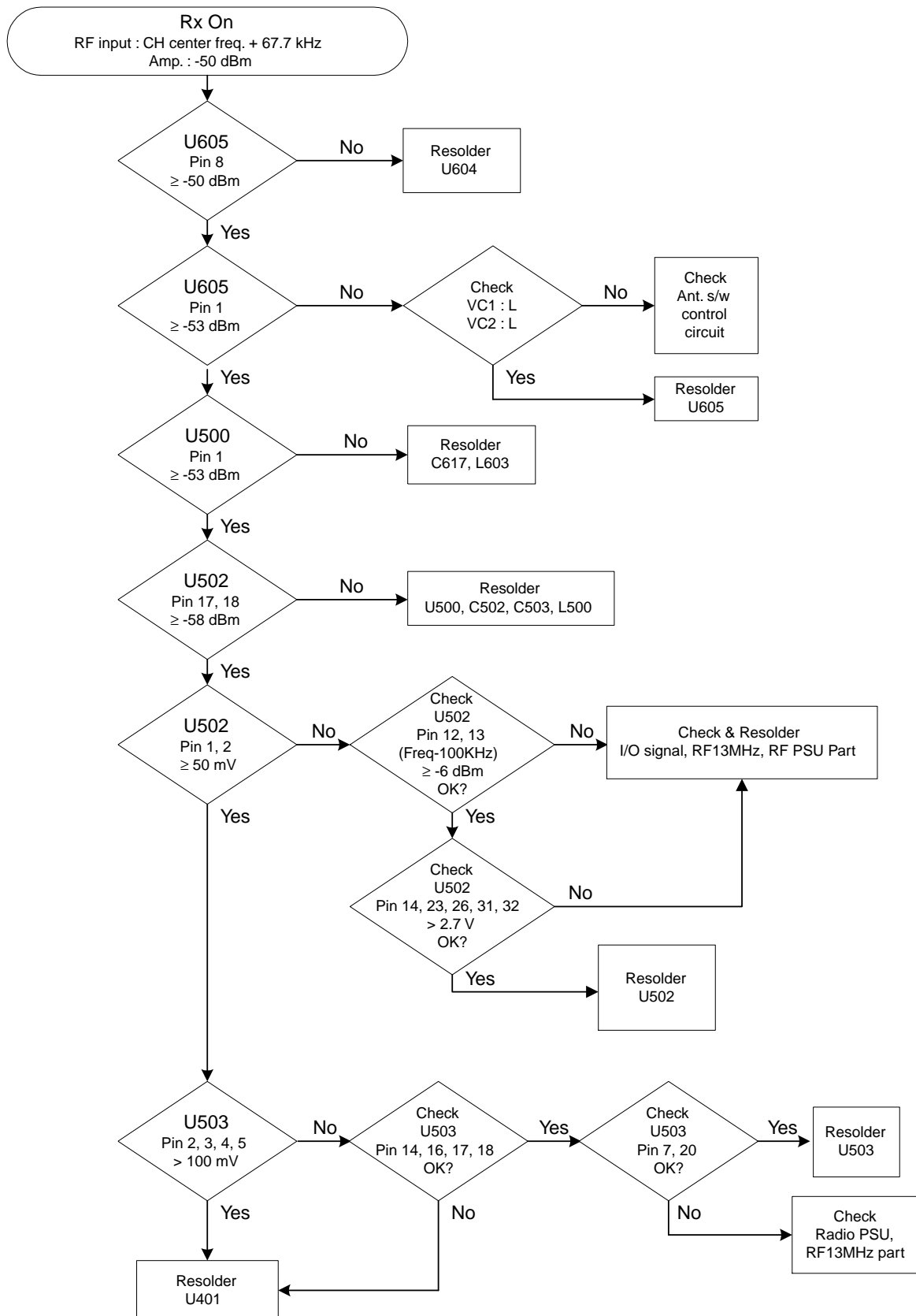
5-11 GSM Receiver



5-12 GSM Transmitter



5-13 DCS Receiver



5-14 DCS Transmitter

