

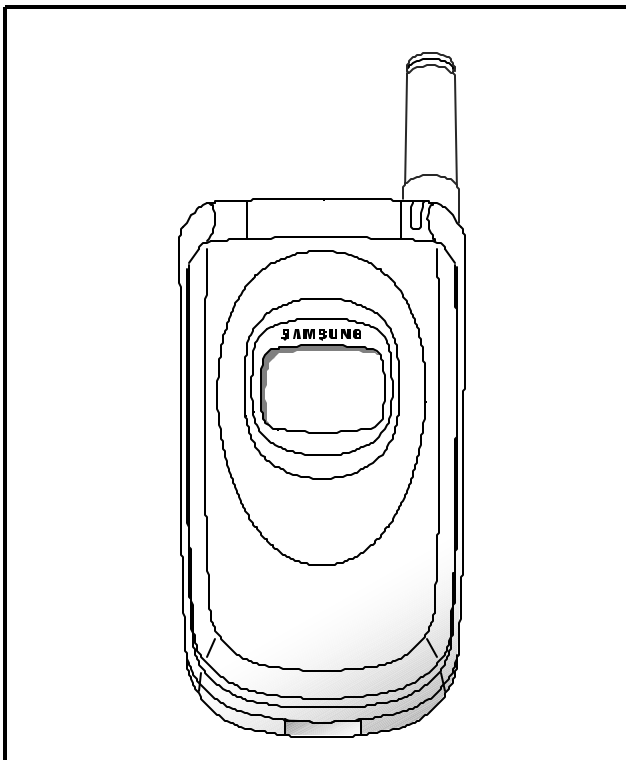
**SAMSUNG**

CHINA CELLULAR GSM  
TELEPHONE  
SGH-S108

# ***SERVICE*** *Manual*

China Cellular GSM Telephone

CONTENTS



1. Exploded Views and Parts List
2. Electrical Parts List
3. Block Diagrams
4. PCB Diagrams
5. Flow Chart of Troubleshooting



**ELECTRONICS**

Samsung Electronics Co.,Ltd. December. 2002  
Printed in Korea.

Code No.: GH68-03165A  
BASIC.

# 1. SGH-S108 MAIN Electrical Parts List

Level	SEC Code	Design LOC	Descriptions	
0	SGH-S108ZSATEC			
2	GH71-00434A	ANT1	NPR-ANT CONTACT	SCH-X210,ST,T0.2,-,-
2	2203-000995	C1000	C-CERAMIC,CHIP	0.047NF,5%,50V,C0G,TP,1005
2	2203-005482	C1003	C-CERAMIC,CHIP	100nF,10%,10V,X5R,TP,1005,-
2	2203-000995	C1004	C-CERAMIC,CHIP	0.047NF,5%,50V,C0G,TP,1005
2	2203-000233	C1005	C-CERAMIC,CHIP	0.1NF,5%,50V,C0G,TP,1005
2	2203-000995	C1006	C-CERAMIC,CHIP	0.047NF,5%,50V,C0G,TP,1005
2	2203-005288	C1007	C-CERAMIC,CHIP	0.001nF,0.1pF,50V,NP0,TP,1005
2	2203-000233	C1008	C-CERAMIC,CHIP	0.1NF,5%,50V,C0G,TP,1005
2	2203-000812	C1009	C-CERAMIC,CHIP	0.033NF,5%,50V,C0G,TP,1005
2	2203-001598	C101	C-CERAMIC,CHIP	2200nF,+80-20%,16V,Y5V,TP,2012
2	2203-000812	C1010	C-CERAMIC,CHIP	0.033NF,5%,50V,C0G,TP,1005
2	2203-005288	C1011	C-CERAMIC,CHIP	0.001nF,0.1pF,50V,NP0,TP,1005
2	2203-002687	C1012	C-CERAMIC,CHIP	1.2nF,10%,50V,X7R,TP,1005
2	2203-000233	C1013	C-CERAMIC,CHIP	0.1NF,5%,50V,C0G,TP,1005
2	2203-005288	C1014	C-CERAMIC,CHIP	0.001nF,0.1pF,50V,NP0,TP,1005
2	2203-005288	C1015	C-CERAMIC,CHIP	0.001nF,0.1pF,50V,NP0,TP,1005
2	2203-000233	C1016	C-CERAMIC,CHIP	0.1NF,5%,50V,C0G,TP,1005
2	2203-005288	C1017	C-CERAMIC,CHIP	0.001nF,0.1pF,50V,NP0,TP,1005
2	2203-000359	C1018	C-CERAMIC,CHIP	0.15NF,5%,50V,C0G,TP,1005
2	2203-005288	C1019	C-CERAMIC,CHIP	0.001nF,0.1pF,50V,NP0,TP,1005
2	2203-005482	C1020	C-CERAMIC,CHIP	100nF,10%,10V,X5R,TP,1005,-
2	2203-000278	C1021	C-CERAMIC,CHIP	0.01NF,0.5PF,50V,C0G,TP,1005
2	2404-001100	C1022	C-TA,CHIP	33uF,20%,6.3V,GP,TP,3719,-
2	2404-001297	C1023	C-TA,CHIP	68UF,20%,10V,LR,TP,4028
2	2203-000233	C1024	C-CERAMIC,CHIP	0.1NF,5%,50V,C0G,TP,1005
2	2203-002677	C1025	C-CERAMIC,CHIP	0.75pF,0.1pF,50V,CH,TP,1005,-
2	2203-000654	C1026	C-CERAMIC,CHIP	270pF,10%,50V,X7R,TP,1005,-
2	2203-000233	C1027	C-CERAMIC,CHIP	0.1NF,5%,50V,C0G,TP,1005
2	2203-000812	C103	C-CERAMIC,CHIP	0.033NF,5%,50V,C0G,TP,1005
2	2203-005383	C1038	C-CERAMIC,CHIP	7pF,0.1pF,50V,NP0,TP,1005,-
2	2404-001297	C1039	C-TA,CHIP	68UF,20%,10V,LR,TP,4028
2	2203-005061	C104	C-CERAMIC,CHIP	100nF,+80-20%,16V,Y5V,TP,1005
2	2203-001598	C105	C-CERAMIC,CHIP	2200nF,+80-20%,16V,Y5V,TP,2012
2	2203-000812	C106	C-CERAMIC,CHIP	0.033NF,5%,50V,C0G,TP,1005
2	2203-000812	C107	C-CERAMIC,CHIP	0.033NF,5%,50V,C0G,TP,1005
2	2203-005061	C108	C-CERAMIC,CHIP	100nF,+80-20%,16V,Y5V,TP,1005
2	2203-005483	C109	C-CERAMIC,CHIP	68nF,10%,10V,X5R,TP,1005,-
2	2203-001598	C111	C-CERAMIC,CHIP	2200nF,+80-20%,16V,Y5V,TP,2012
2	2203-001598	C112	C-CERAMIC,CHIP	2200nF,+80-20%,16V,Y5V,TP,2012
2	2203-001598	C113	C-CERAMIC,CHIP	2200nF,+80-20%,16V,Y5V,TP,2012

Level	SEC Code	Design LOC	Descriptions	
2	2203-001598	C114	C - CERAMIC,CHIP	2200nF,+80-20%,16V,Y5V,TP,2012
2	2404-001088	C115	C - TA,CHIP	2.2uF,20%,6.3V,GP,TP,2012, -
2	2203-001598	C116	C - CERAMIC,CHIP	2200nF,+80-20%,16V,Y5V,TP,2012
2	2404-001088	C117	C - TA,CHIP	2.2uF,20%,6.3V,GP,TP,2012, -
2	2203-000233	C118	C - CERAMIC,CHIP	0.1NF,5%,50V,C0G,TP,1005
2	2203-000254	C119	C - CERAMIC,CHIP	10nF,10%,16V,X7R,TP,1005, -
2	2203-001598	C120	C - CERAMIC,CHIP	2200nF,+80-20%,16V,Y5V,TP,2012
2	2203-001598	C123	C - CERAMIC,CHIP	2200nF,+80-20%,16V,Y5V,TP,2012
2	2203-005061	C124	C - CERAMIC,CHIP	100nF,+80-20%,16V,Y5V,TP,1005
2	2404-001105	C125	C - TA,CHIP	10UF,20%,6.3V,GP,TP,2012
2	2404-001268	C126	C - TA,CHIP	10UF,20%,10V, -,TP,2.2X1.25X1.0
2	2203-000254	C200	C - CERAMIC,CHIP	10nF,10%,16V,X7R,TP,1005, -
2	2203-005061	C201	C - CERAMIC,CHIP	100nF,+80-20%,16V,Y5V,TP,1005
2	2203-005061	C202	C - CERAMIC,CHIP	100nF,+80-20%,16V,Y5V,TP,1005
2	2203-005065	C203	C - CERAMIC,CHIP	1000nF,+80-20%,10V,Y5V,TP,1608
2	2203-005065	C204	C - CERAMIC,CHIP	1000nF,+80-20%,10V,Y5V,TP,1608
2	2203-005509	C205	C - CERAMIC,CHIP	330nF,+80-20%,10V,Y5V,TP,1005
2	2203-005061	C206	C - CERAMIC,CHIP	100nF,+80-20%,16V,Y5V,TP,1005
2	2203-000995	C211	C - CERAMIC,CHIP	0.047NF,5%,50V,C0G,TP,1005
2	2203-000995	C212	C - CERAMIC,CHIP	0.047NF,5%,50V,C0G,TP,1005
2	2203-000233	C213	C - CERAMIC,CHIP	0.1NF,5%,50V,C0G,TP,1005
2	2203-000233	C214	C - CERAMIC,CHIP	0.1NF,5%,50V,C0G,TP,1005
2	2203-000438	C215	C - CERAMIC,CHIP	1nF,10%,50V,X7R,TP,1005, -
2	2203-000438	C216	C - CERAMIC,CHIP	1nF,10%,50V,X7R,TP,1005, -
2	2203-000438	C217	C - CERAMIC,CHIP	1nF,10%,50V,X7R,TP,1005, -
2	2203-000233	C219	C - CERAMIC,CHIP	0.1NF,5%,50V,C0G,TP,1005
2	2203-000233	C220	C - CERAMIC,CHIP	0.1NF,5%,50V,C0G,TP,1005
2	2203-000233	C221	C - CERAMIC,CHIP	0.1NF,5%,50V,C0G,TP,1005
2	2203-000233	C222	C - CERAMIC,CHIP	0.1NF,5%,50V,C0G,TP,1005
2	2203-000233	C223	C - CERAMIC,CHIP	0.1NF,5%,50V,C0G,TP,1005
2	2203-000233	C224	C - CERAMIC,CHIP	0.1NF,5%,50V,C0G,TP,1005
2	2203-000233	C225	C - CERAMIC,CHIP	0.1NF,5%,50V,C0G,TP,1005
2	2203-005055	C301	C - CERAMIC,CHIP	0.0056nF,0.25pF,50V,NP0,TP,1005
2	2203-005061	C302	C - CERAMIC,CHIP	100nF,+80-20%,16V,Y5V,TP,1005
2	2203-005065	C400	C - CERAMIC,CHIP	1000nF,+80-20%,10V,Y5V,TP,1608
2	2203-000654	C401	C - CERAMIC,CHIP	270pF,10%,50V,X7R,TP,1005, -
2	2203-005061	C402	C - CERAMIC,CHIP	100nF,+80-20%,16V,Y5V,TP,1005
2	2203-001405	C403	C - CERAMIC,CHIP	22nF,+80-20%,25V,Y5V,TP,1005
2	2404-001086	C404	C - TA,CHIP	4.7uF,20%,6.3V,GP,TP,2012, -
2	2203-000885	C405	C - CERAMIC,CHIP	4.7nF,10%,25V,X7R,TP,1005, -
2	2203-000233	C407	C - CERAMIC,CHIP	0.1NF,5%,50V,C0G,TP,1005

Level	SEC Code	Design LOC	Descriptions	
2	2203-005061	C408	C - CERAMIC,CHIP	100nF, +80 -20%,16V, Y5V, TP,1005
2	2404-001151	C409	C - TA,CHIP	33UF,20%,6.3V,LZ,TP,3216
2	2404-001086	C410	C - TA,CHIP	4.7uF,20%,6.3V,GP,TP,2012,-
2	2203-000438	C411	C - CERAMIC,CHIP	1nF,10%,50V,X7R,TP,1005,-
2	2203-005061	C412	C - CERAMIC,CHIP	100nF, +80 -20%,16V, Y5V, TP,1005
2	2203-000438	C413	C - CERAMIC,CHIP	1nF,10%,50V,X7R,TP,1005,-
2	2203-005065	C414	C - CERAMIC,CHIP	1000nF, +80 -20%,10V, Y5V, TP,1608
2	2203-000438	C415	C - CERAMIC,CHIP	1nF,10%,50V,X7R,TP,1005,-
2	2203-000654	C416	C - CERAMIC,CHIP	270pF,10%,50V,X7R,TP,1005,-
2	2203-005061	C417	C - CERAMIC,CHIP	100nF, +80 -20%,16V, Y5V, TP,1005
2	2203-000233	C424	C - CERAMIC,CHIP	0.1NF,5%,50V,C0G,TP,1005
2	2203-000995	C425	C - CERAMIC,CHIP	0.047NF,5%,50V,C0G,TP,1005
2	2203-000995	C426	C - CERAMIC,CHIP	0.047NF,5%,50V,C0G,TP,1005
2	2203-001239	C427	C - CERAMIC,CHIP	0.082nF,5%,50V,NP0,TP,1005
2	2007-007771	C428	R - CHIP	0OHM,5%,1/16W,DA,TP,1005
2	2203-000254	C504	C - CERAMIC,CHIP	10nF,10%,16V,X7R,TP,1005,-
2	2203-005061	C512	C - CERAMIC,CHIP	100nF, +80 -20%,16V, Y5V, TP,1005
2	2203-005061	C513	C - CERAMIC,CHIP	100nF, +80 -20%,16V, Y5V, TP,1005
2	2203-005061	C516	C - CERAMIC,CHIP	100nF, +80 -20%,16V, Y5V, TP,1005
2	2203-005061	C517	C - CERAMIC,CHIP	100nF, +80 -20%,16V, Y5V, TP,1005
2	2203-005061	C518	C - CERAMIC,CHIP	100nF, +80 -20%,16V, Y5V, TP,1005
2	2203-005061	C519	C - CERAMIC,CHIP	100nF, +80 -20%,16V, Y5V, TP,1005
2	2203-000254	C600	C - CERAMIC,CHIP	10nF,10%,16V,X7R,TP,1005,-
2	2203-005496	C601	C - CERAMIC,CHIP	220nF, +80 -20%,10V, Y5V, TP,1005
2	2203-005496	C602	C - CERAMIC,CHIP	220nF, +80 -20%,10V, Y5V, TP,1005
2	2203-000254	C603	C - CERAMIC,CHIP	10nF,10%,16V,X7R,TP,1005,-
2	2203-000254	C604	C - CERAMIC,CHIP	10nF,10%,16V,X7R,TP,1005,-
2	2203-000254	C605	C - CERAMIC,CHIP	10nF,10%,16V,X7R,TP,1005,-
2	2203-000254	C606	C - CERAMIC,CHIP	10nF,10%,16V,X7R,TP,1005,-
2	2203-000254	C607	C - CERAMIC,CHIP	10nF,10%,16V,X7R,TP,1005,-
2	2203-000254	C608	C - CERAMIC,CHIP	10nF,10%,16V,X7R,TP,1005,-
2	2203-000254	C609	C - CERAMIC,CHIP	10nF,10%,16V,X7R,TP,1005,-
2	2203-000254	C610	C - CERAMIC,CHIP	10nF,10%,16V,X7R,TP,1005,-
2	2203-001405	C611	C - CERAMIC,CHIP	22nF, +80 -20%,25V, Y5V, TP,1005
2	2203-005061	C612	C - CERAMIC,CHIP	100nF, +80 -20%,16V, Y5V, TP,1005
2	2203-000254	C613	C - CERAMIC,CHIP	10nF,10%,16V,X7R,TP,1005,-
2	2203-000233	C614	C - CERAMIC,CHIP	0.1NF,5%,50V,C0G,TP,1005
2	2203-000628	C615	C - CERAMIC,CHIP	0.022NF,5%,50V,C0G,TP,1005
2	2203-000628	C616	C - CERAMIC,CHIP	0.022NF,5%,50V,C0G,TP,1005
2	2203-000679	C617	C - CERAMIC,CHIP	0.027NF,5%,50V,C0G,TP,1005
2	2203-001153	C707	C - CERAMIC,CHIP	0.068nF,5%,50V,NP0,TP,1005

Level	SEC Code	Design LOC	Descriptions	
2	2203-000585	C708	C - CERAMIC,CHIP	220pF, 10%,50V,X7R, TP, 1005, -
2	2203-005496	C709	C - CERAMIC,CHIP	220nF, +80 -20%,10V, Y5V, TP, 1005
2	2203-005065	C710	C - CERAMIC,CHIP	1000nF, +80 -20%,10V, Y5V, TP, 1608
2	2203-005061	C711	C - CERAMIC,CHIP	100nF, +80 -20%,16V, Y5V, TP, 1005
2	2203-000254	C712	C - CERAMIC,CHIP	10nF, 10%,16V,X7R, TP, 1005, -
2	2203-000254	C713	C - CERAMIC,CHIP	10nF, 10%,16V,X7R, TP, 1005, -
2	2203-000254	C714	C - CERAMIC,CHIP	10nF, 10%,16V,X7R, TP, 1005, -
2	2203-000254	C715	C - CERAMIC,CHIP	10nF, 10%,16V,X7R, TP, 1005, -
2	2203-000254	C716	C - CERAMIC,CHIP	10nF, 10%,16V,X7R, TP, 1005, -
2	2203-000254	C717	C - CERAMIC,CHIP	10nF, 10%,16V,X7R, TP, 1005, -
2	2203-000254	C718	C - CERAMIC,CHIP	10nF, 10%,16V,X7R, TP, 1005, -
2	2203-000254	C719	C - CERAMIC,CHIP	10nF, 10%,16V,X7R, TP, 1005, -
2	2203-000254	C800	C - CERAMIC,CHIP	10nF, 10%,16V,X7R, TP, 1005, -
2	2203-000438	C801	C - CERAMIC,CHIP	1nF, 10%,50V,X7R, TP, 1005, -
2	2203-000438	C802	C - CERAMIC,CHIP	1nF, 10%,50V,X7R, TP, 1005, -
2	2203-000278	C803	C - CERAMIC,CHIP	0.01NF,0.5PF,50V,C0G, TP, 1005
2	2203-000438	C804	C - CERAMIC,CHIP	1nF, 10%,50V,X7R, TP, 1005, -
2	2203-000254	C805	C - CERAMIC,CHIP	10nF, 10%,16V,X7R, TP, 1005, -
2	2203-000278	C806	C - CERAMIC,CHIP	0.01NF,0.5PF,50V,C0G, TP, 1005
2	2203-000254	C807	C - CERAMIC,CHIP	10nF, 10%,16V,X7R, TP, 1005, -
2	2203-000254	C808	C - CERAMIC,CHIP	10nF, 10%,16V,X7R, TP, 1005, -
2	2203-000254	C809	C - CERAMIC,CHIP	10nF, 10%,16V,X7R, TP, 1005, -
2	2203-000233	C900	C - CERAMIC,CHIP	0.1NF,5%,50V,C0G,TP,1005
2	2203-000233	C901	C - CERAMIC,CHIP	0.1NF,5%,50V,C0G,TP,1005
2	2203-000233	C902	C - CERAMIC,CHIP	0.1NF,5%,50V,C0G,TP,1005
2	2203-001405	C903	C - CERAMIC,CHIP	22nF, +80 -20%,25V, Y5V, TP, 1005
2	2203-001405	C905	C - CERAMIC,CHIP	22nF, +80 -20%,25V, Y5V, TP, 1005
2	2203-001405	C906	C - CERAMIC,CHIP	22nF, +80 -20%,25V, Y5V, TP, 1005
2	2203-001405	C908	C - CERAMIC,CHIP	22nF, +80 -20%,25V, Y5V, TP, 1005
2	2203-001405	C910	C - CERAMIC,CHIP	22nF, +80 -20%,25V, Y5V, TP, 1005
2	2203-000233	C911	C - CERAMIC,CHIP	0.1NF,5%,50V,C0G,TP,1005
2	2203-001405	C914	C - CERAMIC,CHIP	22nF, +80 -20%,25V, Y5V, TP, 1005
2	2203-001405	C915	C - CERAMIC,CHIP	22nF, +80 -20%,25V, Y5V, TP, 1005
2	2203-000233	C916	C - CERAMIC,CHIP	0.1NF,5%,50V,C0G,TP,1005
2	2203-001405	C917	C - CERAMIC,CHIP	22nF, +80 -20%,25V, Y5V, TP, 1005
2	2203-000233	C918	C - CERAMIC,CHIP	0.1NF,5%,50V,C0G,TP,1005
2	2203-000233	C919	C - CERAMIC,CHIP	0.1NF,5%,50V,C0G,TP,1005
2	2203-000233	C920	C - CERAMIC,CHIP	0.1NF,5%,50V,C0G,TP,1005
2	2203-001405	C921	C - CERAMIC,CHIP	22nF, +80 -20%,25V, Y5V, TP, 1005
2	2203-000995	C922	C - CERAMIC,CHIP	0.047NF,5%,50V,C0G,TP,1005
2	2203-000812	C923	C - CERAMIC,CHIP	0.033NF,5%,50V,C0G,TP,1005

Level	SEC Code	Design LOC	Descriptions	
2	2203-000233	C924	C - CERAMIC,CHIP	0.1NF,5%,50V,C0G,TP,1005
2	2203-000233	C925	C - CERAMIC,CHIP	0.1NF,5%,50V,C0G,TP,1005
2	3709-001187	CN100	CONNECTOR - CARD EDGE	6P,2.54MM,SMD - A, -
2	3705-001248	CN1001	CONNECTOR - COAXIAL	-, -,50MOHM,50OHM,0.3DB
2	3711-004289	CN200	CONNECTOR - HEADER	BOX,30P,2R,0.5MM,SMD - S,AUF
2	3711-004623	CN201	CONNECTOR - HEADER	BOX,20P,2R,0.5mm,SMD - S,AUF
2	3710-001545	CN302	CONNECTOR - SOCKET	24P,1R,0.5MM,SMD - A,AUF
2	3722-001842	CN401	JACK - PHONE	4P,2.3PI,AU,BLK, -
2	1405-001082	D202	VARISTOR	5.6V,20A,1x0.5x0.6mm,TP
2	1405-001082	D203	VARISTOR	5.6V,20A,1x0.5x0.6mm,TP
2	1405-001082	D204	VARISTOR	5.6V,20A,1x0.5x0.6mm,TP
2	0406-001152	D301	DIODE - TVS	SD05,6/-/-/,350W,SOD - 323
2	4709-001279	F1000	COUPLER - DIRECTION	897.5+ - 17.5MHZ,18+ - 1DB,26DB,1.6X0.8X0.6M
2	4709-001278	F1001	COUPLER - DIRECTION	1850+ - 140MHZ,19.7+ - 1.4DB,25DB,1.6X0.8X0.6
2	2909-001180	F1002	FILTER - DUPLEXER	942.5MHZ,897.5MHZ,0.2/0.5DB,TP, -, -
2	2904-001390	F1004	FILTER - SAW	942.5MHZ, -,1.0DB,TP,2.3DB, -
2	2904-001410	F1005	FILTER - SAW	1.96GHZ, -,1930 - 1990MHZ/2.4DB,TP,1930 - 1990
2	2904-001403	F1006	FILTER - SAW	1.8425GHZ, -,1805 - 1880MHZ/2.0DB,TP,1805 - 18
2	2901-001193	F200	FILTER - EMI SMD	25V,0.1A, -,35pF,3.2x1.6x0.75MM,TP
2	2901-001193	F201	FILTER - EMI SMD	25V,0.1A, -,35pF,3.2x1.6x0.75MM,TP
2	2901-001193	F202	FILTER - EMI SMD	25V,0.1A, -,35pF,3.2x1.6x0.75MM,TP
2	2901-001193	F203	FILTER - EMI SMD	25V,0.1A, -,35pF,3.2x1.6x0.75MM,TP
2	2901-001193	F204	FILTER - EMI SMD	25V,0.1A, -,35pF,3.2x1.6x0.75MM,TP
2	2703-001257	L1000	INDUCTOR - SMD	3.9nH,0.3nH,1.6x0.8X0.8mm
2	2703-001512	L1001	INDUCTOR - SMD	27nH,5%,1.8x1.12x1.02mm
2	2703-002165	L1002	INDUCTOR - SMD	7.5nH,5%,1.6x1.12x1.02 mm
2	2703-001751	L1004	INDUCTOR - SMD	3.9nH,0.3nH,1.0x0.5x0.5mm
2	2703-001747	L1005	INDUCTOR - SMD	4.7nH,0.3nH,1.0x0.5x0.5mm
2	2703-002471	L1006	INDUCTOR - SMD	6.2NH,5%,1608
2	3301-001105	L801	CORE - FERRITE	AB,1.6x0.8x0.8mm, -, -
2	2703-001751	L900	INDUCTOR - SMD	3.9nH,0.3nH,1.0x0.5x0.5mm
2	0604-001146	LED200	PHOTO - IRDA	-,875NM,500MW,30DEG,TP
2	4302-001119	M101	BATTERY - LI(2ND)	3V,0.1MAH, -, -,3.1V, -
2	2801-004116	OSC601	CRYSTAL - UNIT	0.032768MHZ,20PPM,28 - ABK,12.5FF,65KOHM,T
2	2809-001260	OSC801	OSCILLATOR - VCTCXO	13MHZ,3PPM,10KOHM//10PF,TP,3V, -
2	0504-000168	Q100	TR - DIGITAL	RN1104,NPN,100MW,47K/47K,SSM,TP
2	0502-001201	Q101	TR - POWER	ZXT13P20DE6,PNP,1100MW,SOT - 23 - 6,TP,300 -
2	0501-000225	Q400	TR - SMALL SIGNAL	2SC4617,NPN,200mW,EM3,TP,120 - 5
2	0504-000167	Q700	TR - DIGITAL	RN1102,NPN,100MW,10K/10K,SSM,TP
2	0504-000167	Q701	TR - DIGITAL	RN1102,NPN,100MW,10K/10K,SSM,TP
2	0504-000167	Q702	TR - DIGITAL	RN1102,NPN,100MW,10K/10K,SSM,TP

Level	SEC Code	Design LOC	Descriptions	
2	2007-001319	R100	R-CHIP	1.2Kohm,5%,1/16W,DA,TP,1005
2	2007-007311	R1000	R-CHIP	22Kohm,1%,1/16W,DA,TP,1005
2	2007-007142	R1001	R-CHIP	10Kohm,1%,1/16W,DA,TP,1005
2	2007-007309	R1002	R-CHIP	12Kohm,1%,1/16W,DA,TP,1005
2	2007-000138	R1003	R-CHIP	100ohm,5%,1/16W,DA,TP,1005
2	2007-000138	R1004	R-CHIP	100ohm,5%,1/16W,DA,TP,1005
2	2007-001301	R1005	R-CHIP	68ohm,5%,1/16W,DA,TP,1005
2	2007-001301	R1006	R-CHIP	68ohm,5%,1/16W,DA,TP,1005
2	2007-000138	R1008	R-CHIP	100ohm,5%,1/16W,DA,TP,1005
2	2007-000138	R1009	R-CHIP	100ohm,5%,1/16W,DA,TP,1005
2	2007-000172	R101	R-CHIP	10ohm,5%,1/16W,DA,TP,1005
2	2007-001288	R1010	R-CHIP	18ohm,5%,1/16W,DA,TP,1005
2	2007-007008	R1011	R-CHIP	300OHM,5%,1/16W,DA,TP,1005
2	2007-007008	R1012	R-CHIP	300OHM,5%,1/16W,DA,TP,1005
2	2007-000174	R1013	R-CHIP	47ohm,5%,1/16W,DA,TP,1005
2	2007-001288	R1014	R-CHIP	18ohm,5%,1/16W,DA,TP,1005
2	2007-007008	R1015	R-CHIP	300OHM,5%,1/16W,DA,TP,1005
2	2007-007008	R1016	R-CHIP	300OHM,5%,1/16W,DA,TP,1005
2	2007-000174	R1017	R-CHIP	47ohm,5%,1/16W,DA,TP,1005
2	2007-007698	R1018	R-CHIP	5.1Kohm,1%,1/16W,DA,TP,1005
2	2007-000167	R102	R-CHIP	390Kohm,5%,1/16W,DA,TP,1005
2	2007-007200	R103	R-CHIP	2.4OHM,5%,1/16W,DA,TP,1005
2	2007-007771	R104	R-CHIP	0OHM,5%,1/16W,DA,TP,1005
2	2007-007771	R105	R-CHIP	0OHM,5%,1/16W,DA,TP,1005
2	2007-007771	R106	R-CHIP	0OHM,5%,1/16W,DA,TP,1005
2	2007-000758	R110	R-CHIP	330Kohm,5%,1/16W,DA,TP,1005
2	2007-007142	R111	R-CHIP	10Kohm,1%,1/16W,DA,TP,1005
2	2007-007139	R112	R-CHIP	47Kohm,1%,1/16W,DA,TP,1005
2	2007-001323	R113	R-CHIP	3Kohm,5%,1/16W,DA,TP,1005
2	2007-000172	R200	R-CHIP	10ohm,5%,1/16W,DA,TP,1005
2	2007-000140	R303	R-CHIP	1Kohm,5%,1/16W,DA,TP,1005
2	2007-000157	R305	R-CHIP	47Kohm,5%,1/16W,DA,TP,1005
2	2007-000157	R306	R-CHIP	47Kohm,5%,1/16W,DA,TP,1005
2	2007-000140	R307	R-CHIP	1Kohm,5%,1/16W,DA,TP,1005
2	2007-000140	R308	R-CHIP	1Kohm,5%,1/16W,DA,TP,1005
2	2007-000140	R309	R-CHIP	1Kohm,5%,1/16W,DA,TP,1005
2	2007-000140	R310	R-CHIP	1Kohm,5%,1/16W,DA,TP,1005
2	2007-007771	R312	R-CHIP	0OHM,5%,1/16W,DA,TP,1005
2	2007-000172	R400	R-CHIP	10ohm,5%,1/16W,DA,TP,1005
2	2007-003001	R401	R-CHIP	12OHM,5%,1/16W,DA,TP,1005
2	2007-000159	R403	R-CHIP	56Kohm,5%,1/16W,DA,TP,1005

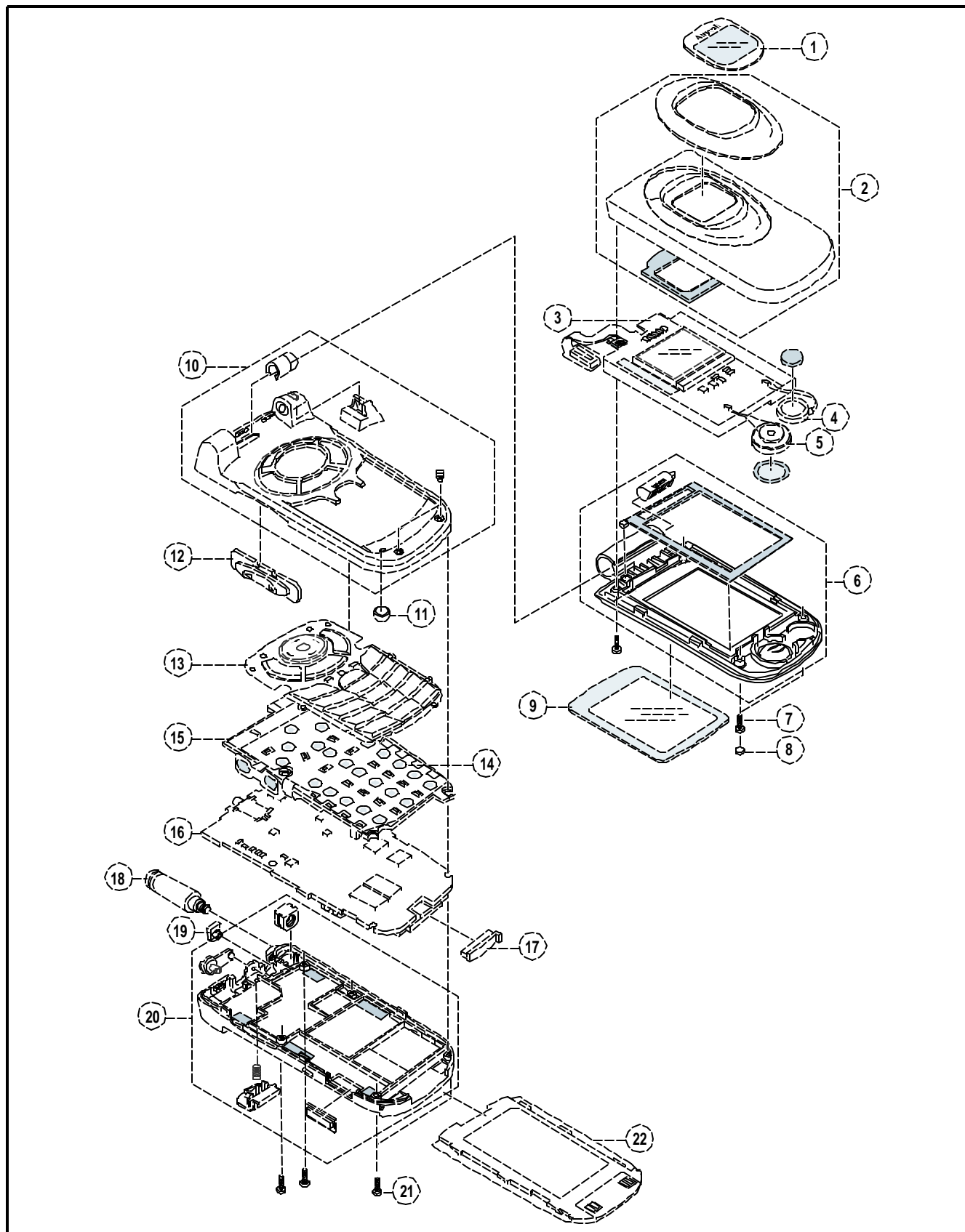


Level	SEC Code	Design LOC	Descriptions	
2	2007-000775	R404	R-CHIP	33Kohm,5%,1/16W,DA,TP,1005
2	2007-000148	R405	R-CHIP	10Kohm,5%,1/16W,DA,TP,1005
2	2007-000159	R406	R-CHIP	56Kohm,5%,1/16W,DA,TP,1005
2	2007-000775	R407	R-CHIP	33Kohm,5%,1/16W,DA,TP,1005
2	2007-000159	R408	R-CHIP	56Kohm,5%,1/16W,DA,TP,1005
2	2007-000141	R409	R-CHIP	2.2Kohm,5%,1/16W,DA,TP,1005
2	2007-001119	R410	R-CHIP	680ohm,5%,1/16W,DA,TP,1005
2	2007-000775	R412	R-CHIP	33Kohm,5%,1/16W,DA,TP,1005
2	2007-001325	R413	R-CHIP	3.3Kohm,5%,1/16W,DA,TP,1005
2	2007-000141	R414	R-CHIP	2.2Kohm,5%,1/16W,DA,TP,1005
2	2007-000162	R415	R-CHIP	100Kohm,5%,1/16W,DA,TP,1005
2	2007-000148	R420	R-CHIP	10Kohm,5%,1/16W,DA,TP,1005
2	2007-007021	R421	R-CHIP	75KOHM,5%,1/16W,DA,TP,1005
2	2007-001333	R422	R-CHIP	18Kohm,5%,1/16W,DA,TP,1005
2	2007-000140	R423	R-CHIP	1Kohm,5%,1/16W,DA,TP,1005
2	2007-000148	R424	R-CHIP	10Kohm,5%,1/16W,DA,TP,1005
2	2007-007771	R429	R-CHIP	0OHM,5%,1/16W,DA,TP,1005
2	2203-000812	R430	C-CERAMIC,CHIP	0.033NF,5%,50V,C0G,TP,1005
2	2007-000172	R506	R-CHIP	10ohm,5%,1/16W,DA,TP,1005
2	2007-000162	R600	R-CHIP	100Kohm,5%,1/16W,DA,TP,1005
2	2007-000172	R606	R-CHIP	10ohm,5%,1/16W,DA,TP,1005
2	2007-000157	R608	R-CHIP	47Kohm,5%,1/16W,DA,TP,1005
2	2007-000157	R609	R-CHIP	47Kohm,5%,1/16W,DA,TP,1005
2	2007-000170	R610	R-CHIP	1Mohm,5%,1/16W,DA,TP,1005
2	2007-007142	R611	R-CHIP	10Kohm,1%,1/16W,DA,TP,1005
2	2007-007308	R612	R-CHIP	33Kohm,1%,1/16W,DA,TP,1005
2	2007-007308	R613	R-CHIP	33Kohm,1%,1/16W,DA,TP,1005
2	2007-007771	R700	R-CHIP	0OHM,5%,1/16W,DA,TP,1005
2	2007-000162	R701	R-CHIP	100Kohm,5%,1/16W,DA,TP,1005
2	2007-007200	R709	R-CHIP	2.4OHM,5%,1/16W,DA,TP,1005
2	2007-007200	R710	R-CHIP	2.4OHM,5%,1/16W,DA,TP,1005
2	2007-007771	R711	R-CHIP	0OHM,5%,1/16W,DA,TP,1005
2	2007-002796	R712	R-CHIP	510ohm,5%,1/16W,DA,TP,1005
2	2007-000162	R713	R-CHIP	100Kohm,5%,1/16W,DA,TP,1005
2	2007-000162	R714	R-CHIP	100Kohm,5%,1/16W,DA,TP,1005
2	2007-000172	R715	R-CHIP	10ohm,5%,1/16W,DA,TP,1005
2	2007-000172	R800	R-CHIP	10ohm,5%,1/16W,DA,TP,1005
2	2007-002797	R801	R-CHIP	560ohm,5%,1/16W,DA,TP,1005
2	2007-002797	R802	R-CHIP	560ohm,5%,1/16W,DA,TP,1005
2	2007-007771	R803	R-CHIP	0OHM,5%,1/16W,DA,TP,1005
2	2007-000758	R804	R-CHIP	330Kohm,5%,1/16W,DA,TP,1005

Level	SEC Code	Design LOC	Descriptions	
2	2007-000172	R805	R-CHIP	10ohm,5%,1/16W,DA,TP,1005
2	2007-007771	R901	R-CHIP	00HM,5%,1/16W,DA,TP,1005
2	1203-002568	U100	IC-VOLTAGE REGULATOR	PSC2006,MLCC,68P,10X10MM,PLASTIC,1.8/2.5V
2	1209-001379	U1000	IC-ETC, LINEAR	HD155173ANPEL,-,16P,-,-,3.4V,240MW,-25TO
2	1201-001864	U1001	IC-POWER AMP	08123,-,8P,13.75X8MM,DUAL,-,-,4.5V,-,-25TO
2	3711-004621	U1002	CONNECTOR-HEADER	BOX,14P,2R,0.5mm,SMD-S,AUF
2	1203-002127	U101	IC-BATTERY	1734,SOT-23,6P,150MIL,PLASTIC,4.7/5.3V,-,0to
2	0506-001052	U102	TR-ARRAY	UMH9N,NPN,2,150MW,SC-88,TP,68-
2	1001-001152	U400	IC-ANALOG MULTIPLEX	MAX4624EU-T,-,SOT23,6P,173MIL,-,5.5V,-40to
2	1204-001811	U401	IC-MELODY	YMU759-QE2,QFN,32P,-,PLASTIC,6V,-,-20TO+
2	1109-001226	U501	IC-ETC. MEMORY	28F6408W30,4MX16/512KX16BIT,CSP,80P,14X8
2	1109-001226	U502	IC-ETC. MEMORY	28F6408W30,4MX16/512KX16BIT,CSP,80P,14X8
2	GH09-00020A	U601	IC MICOM-SGHS100	TR09WQTEB17IN2B-DT,SGH-S100,-,-,-,144K
2	1209-001219	U602	IC-SENSOR	LM60C,SOT-23,3P,115MIL,PLASTIC
2	1204-001984	U700	IC-SIGNAL PROCESSOR	CSP1093CR1-RT10-DB,FSBGA,108P,8X8MM,PL
2	0504-001042	U701	TR-DIGITAL	BCR10PN,NPN/PNP,250mW,10K/10K,
2	0504-001042	U702	TR-DIGITAL	BCR10PN,NPN/PNP,250mW,10K/10K,
2	0504-001042	U703	TR-DIGITAL	BCR10PN,NPN/PNP,250mW,10K/10K,
2	0801-002345	U801	IC-CMOS LOGIC	7S04,INVERTER,SOT-353,5P,49MIL,SINGLE,TP,P
2	1205-002185	U900	IC-INTERFACE	SI4201-BM,MLP,20P,4X4MM,-,3V,-,-20TO+85C,
2	1205-002268	U901	IC-TRANSCEIVER	SI4200F,MLP,32P,5X5MM,-,3V,-,-20TO+85C,TP,
2	1209-001434	U902	IC-PLL/SYNTHESISER	SI4133T-BM,MLP,28P,5X5MM,-,3V,-,-20TO+85
2	1405-001082	ZD300	VARISTOR	5.6V,20A,1x0.5x0.6mm,TP
2	1405-001082	ZD302	VARISTOR	5.6V,20A,1x0.5x0.6mm,TP
2	1405-001082	ZD303	VARISTOR	5.6V,20A,1x0.5x0.6mm,TP
2	0406-001084	ZD305	DIODE-TVS	SMF05,6/-/-V,200W,-
2	1405-001082	ZD309	VARISTOR	5.6V,20A,1x0.5x0.6mm,TP
2	1405-001082	ZD310	VARISTOR	5.6V,20A,1x0.5x0.6mm,TP
2	0406-001084	ZD311	DIODE-TVS	SMF05,6/-/-V,200W,-
2	1405-001082	ZD401	VARISTOR	5.6V,20A,1x0.5x0.6mm,TP
2	1405-001082	ZD402	VARISTOR	5.6V,20A,1x0.5x0.6mm,TP
2	1405-001082	ZD404	VARISTOR	5.6V,20A,1x0.5x0.6mm,TP
2	1405-001082	ZD405	VARISTOR	5.6V,20A,1x0.5x0.6mm,TP

## 2. SGH-S108 Exploded View and its Parts list

### 1. Cellular phone Exploded View



2. Cellular phone Parts list

No.	Description	SEC. CODE	Remark
1	DUAL WINDOW LCD	GH72-05435A	
2	FOLDER UPPER	GH75-02604A	
3	LCD	GH07-00179A	
4	MOTOR	3101-001295	
5	SPEAKER	3001-001297	
6	FOLDER LOWER	GH75-02079A	
7	SCREW	6001-001478	
8	SCREW CAP	GH74-02036A	
9	WINDOW LCD	GH72-04716A	
10	FRONT COVER	GH75-02076A	
11	MIC	GH59-00138A	
12	VOLUME KEY	GH75-02123A	
13	KEYPAD	GH75-02307A	
14	DOME SHEET	GH59-00425A	
15	SHIELD COVER	GH75-02203A	
16	MAIN PBA	GH92-01359A	
17	CONNECTOR COVER	GH73-01230A	
18	ANTENNA	GH42-00193A	
19	RF COVER	GH73-01229A	
20	REAR COVER	GH75-02077A	
21	SCREW	6001-001479	
22	BATTERY	GH43-00656A	720MAH
		GH43-00658A	900MAH

3. Test Jig (GH80-00865A)



3-1. RF Test Cable  
(GH39-00093A)



3-2. Test Cable  
(GH39-00165A)



3-3. Serial Cable



3-4. Power Supply Cable



3-5. DATA CABLE  
(GH39-00176A)



3-6. TA (GH44-00312D)

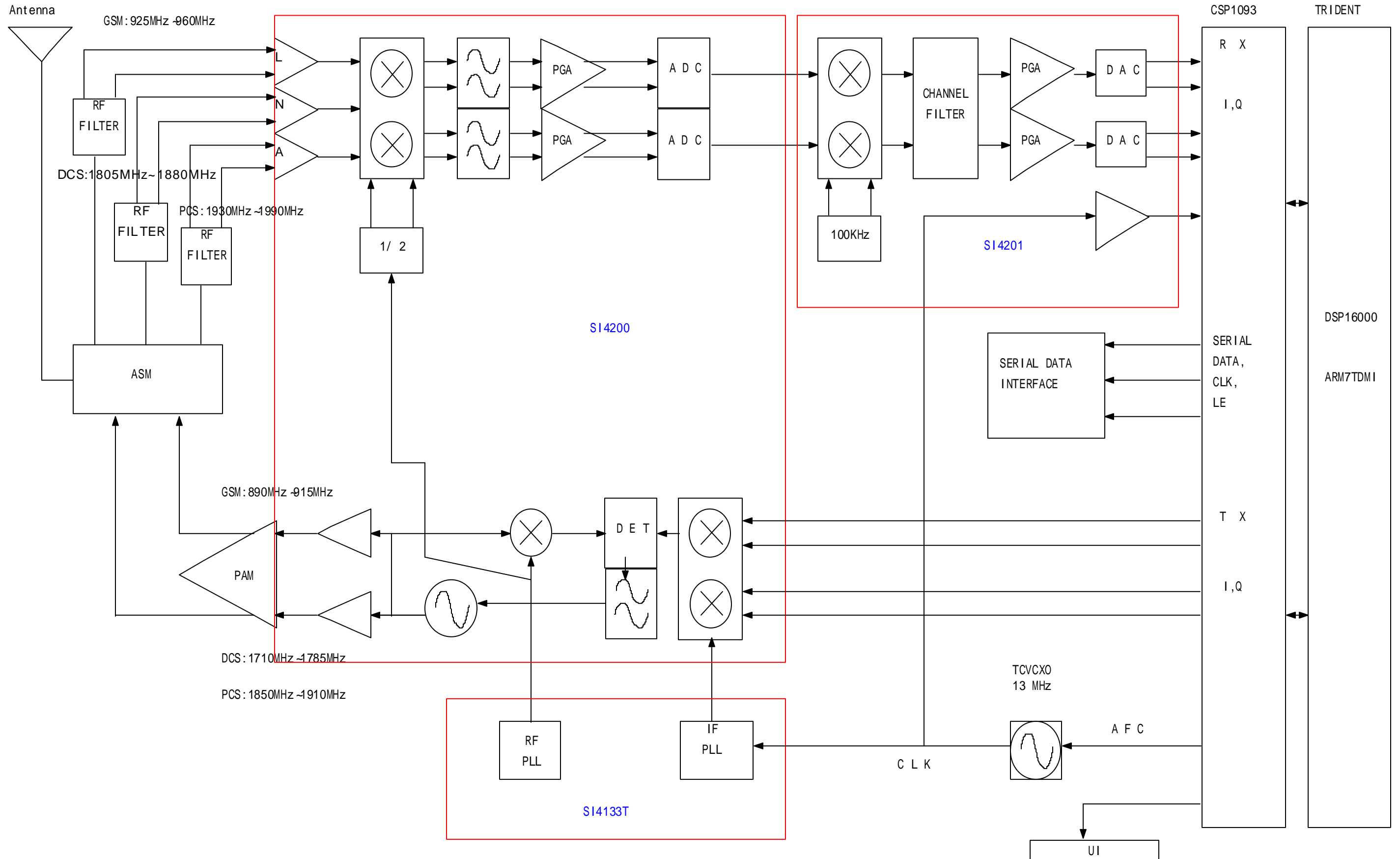


# MEMO

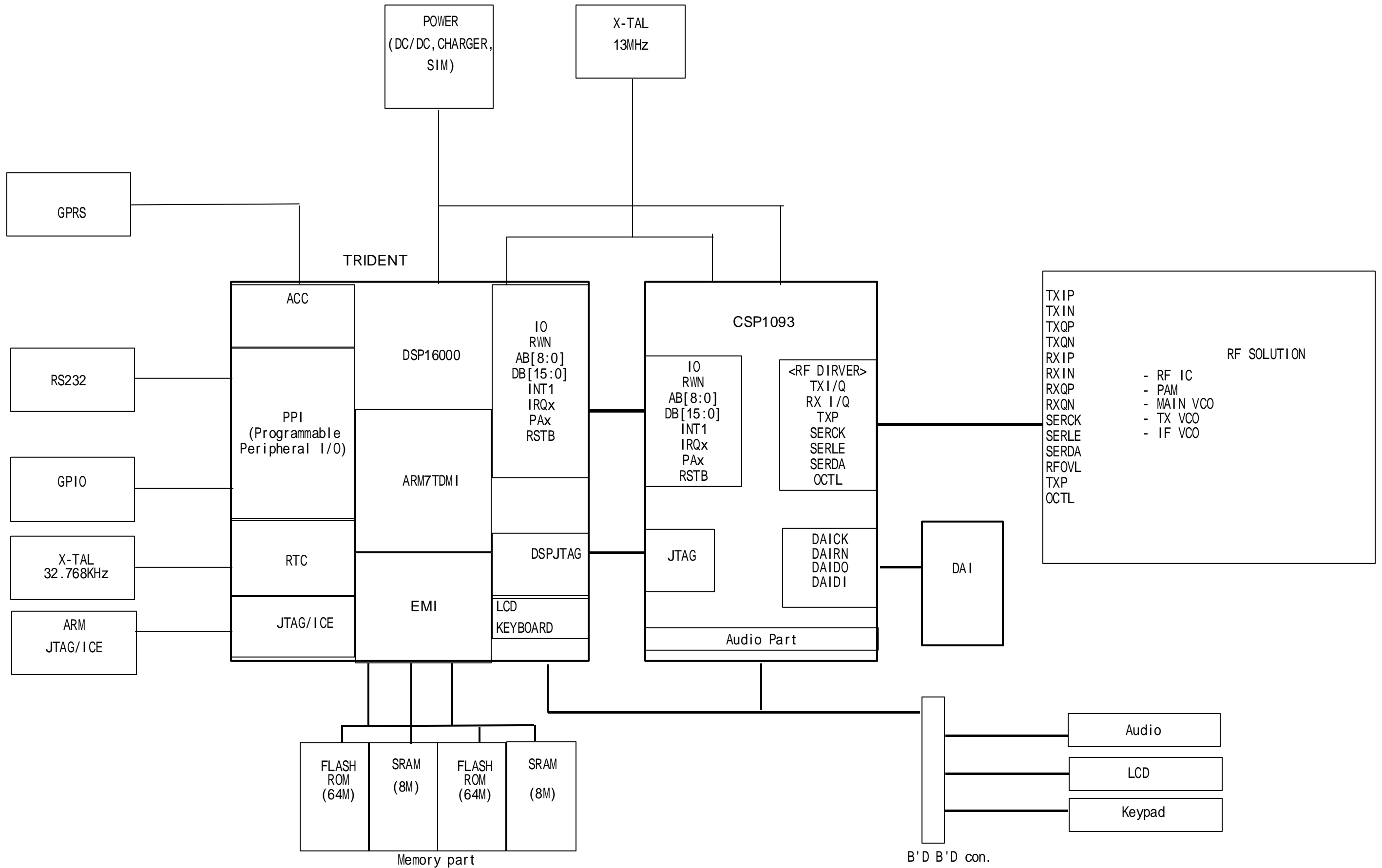
-----  
-----  
-----  
-----  
-----  
-----  
-----  
-----  
-----  
-----  
-----  
-----  
-----  
-----  
-----  
-----  
-----  
-----  
-----  
-----  
-----  
-----  
-----  
-----

### 3. SGH-S108 Block Diagrams

#### 1. RF Block Diagram



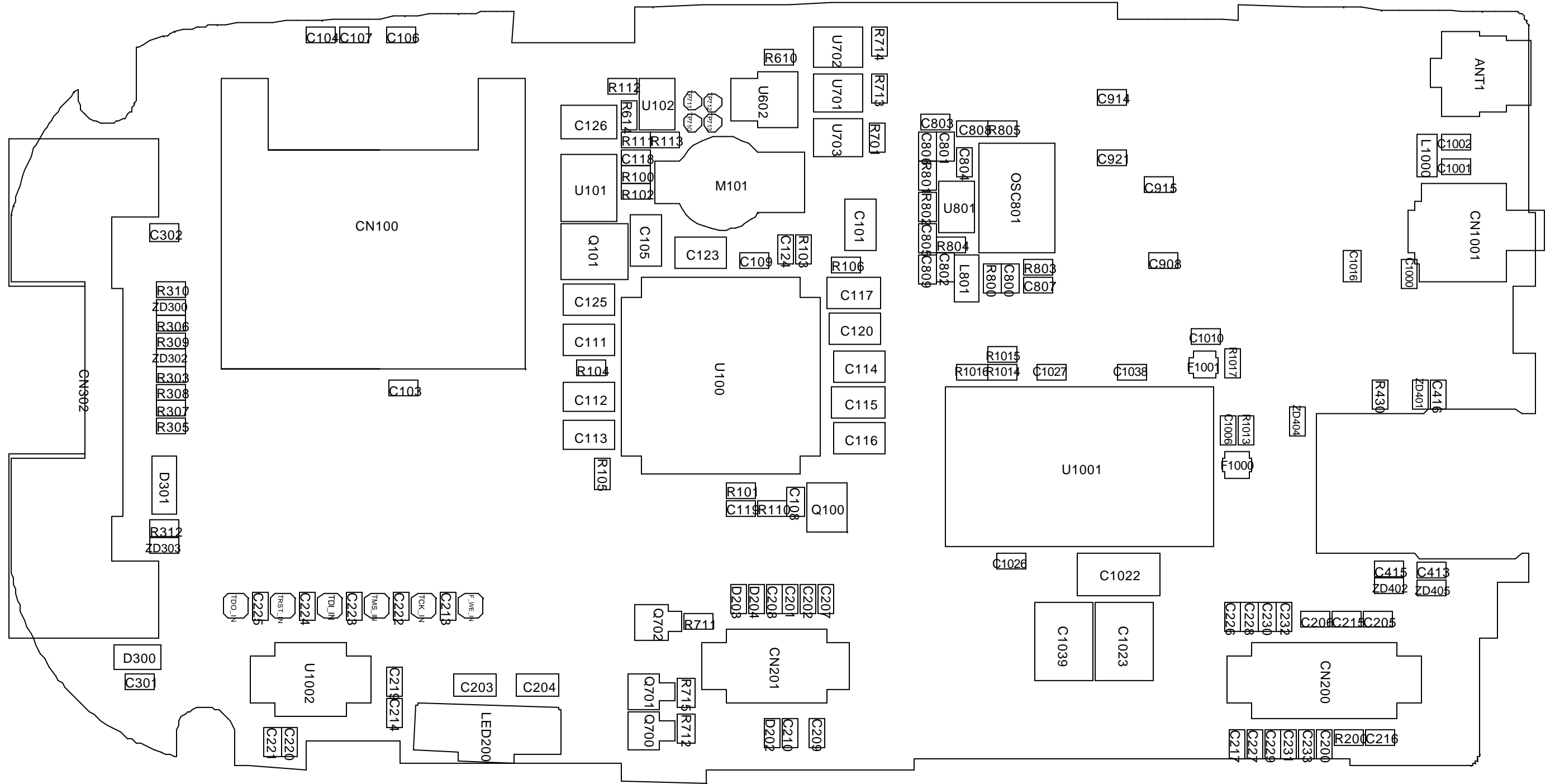
2. Base Band Solution Block Diagram





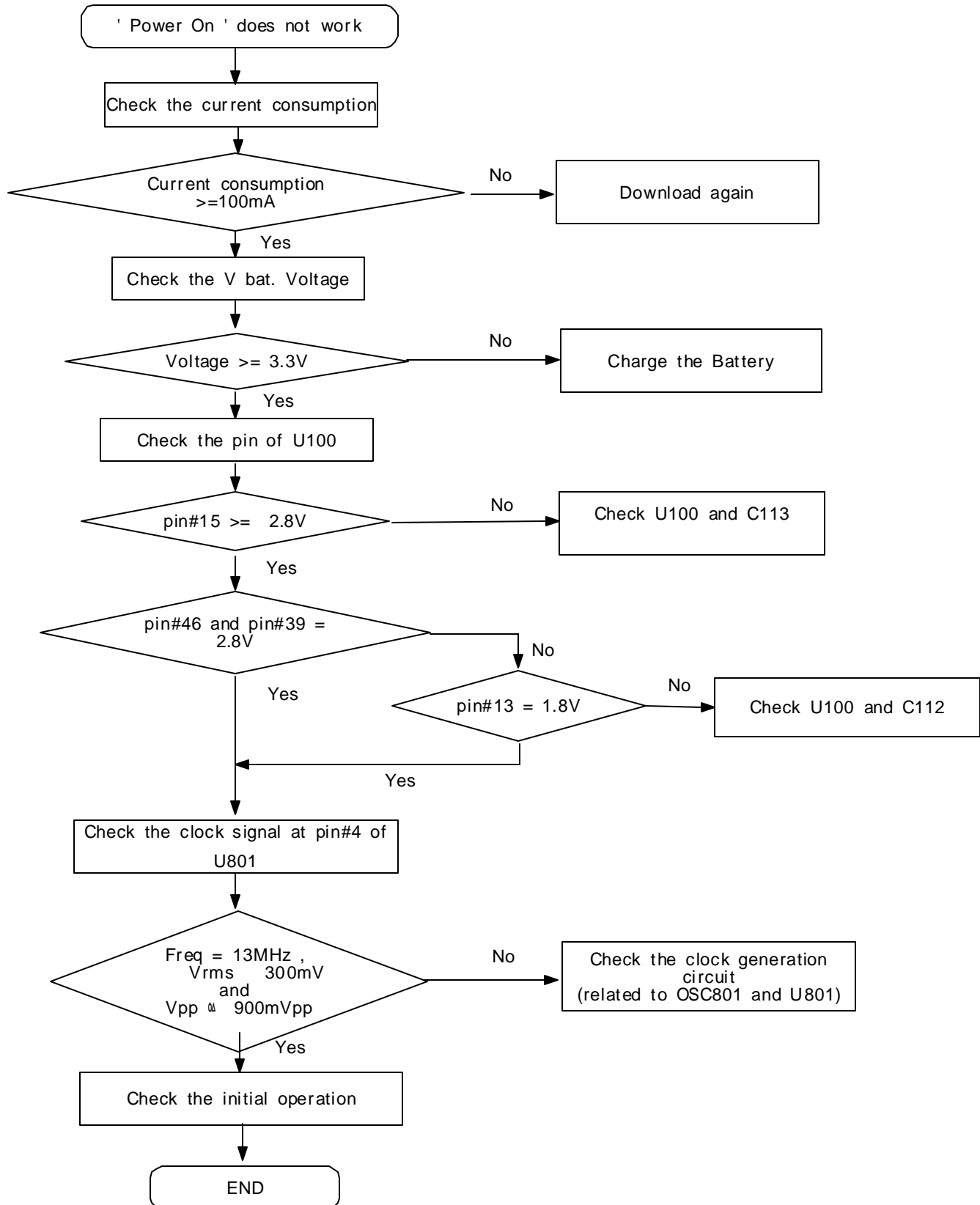


2. Main PCB Bottom Diagram

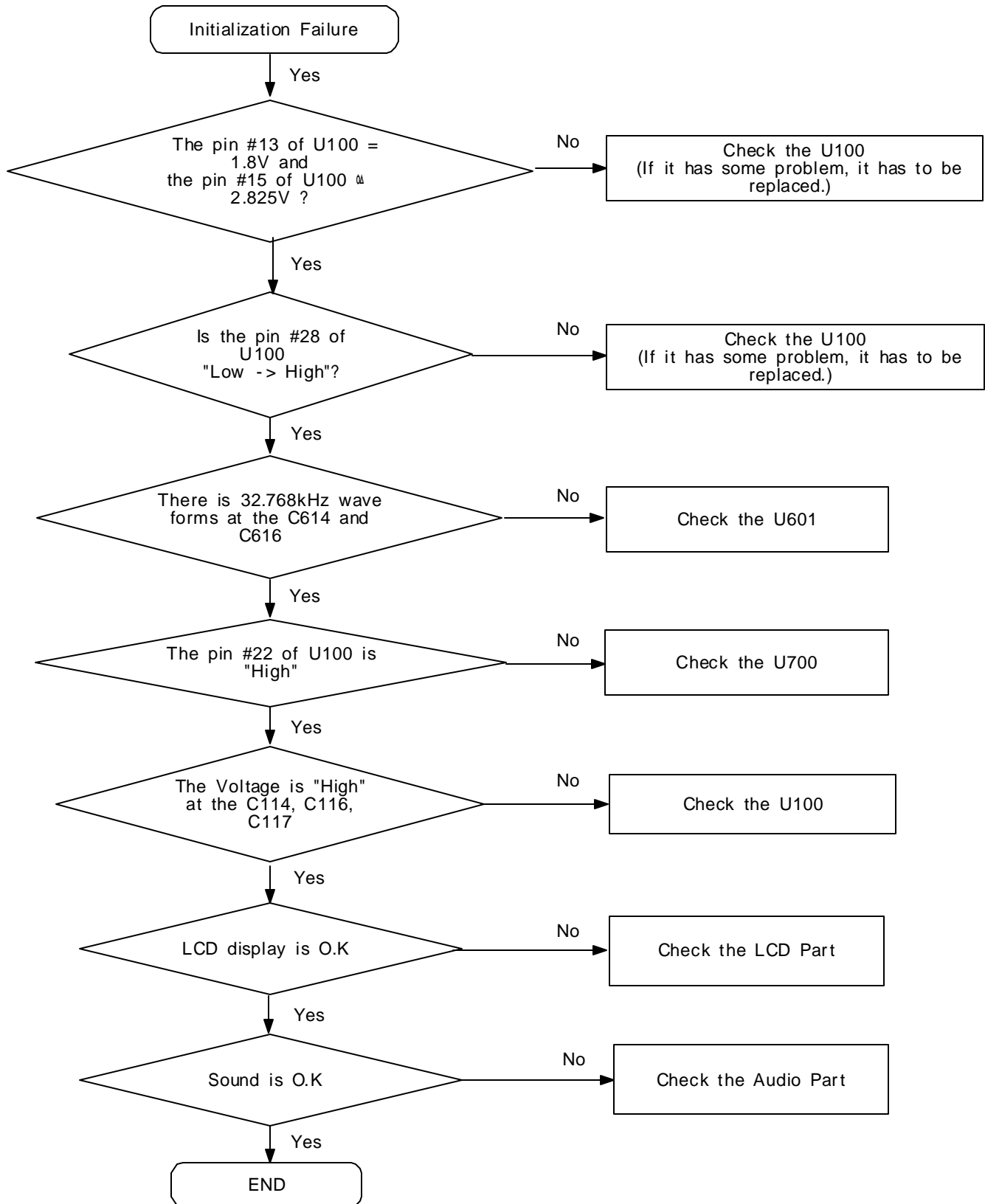


## 5. SGH-S108 Flow Chart of Troubleshooting

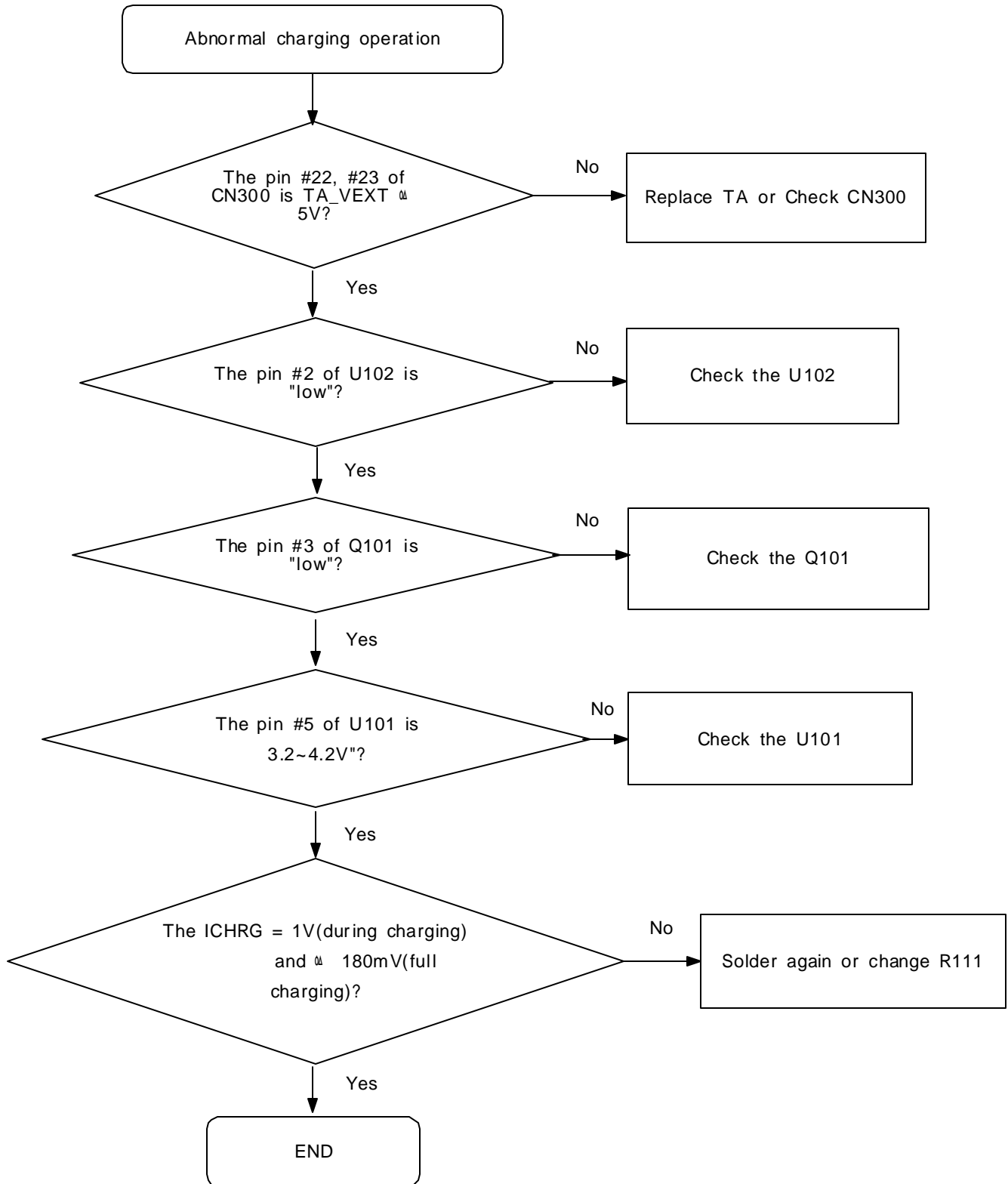
### 1. Power ON



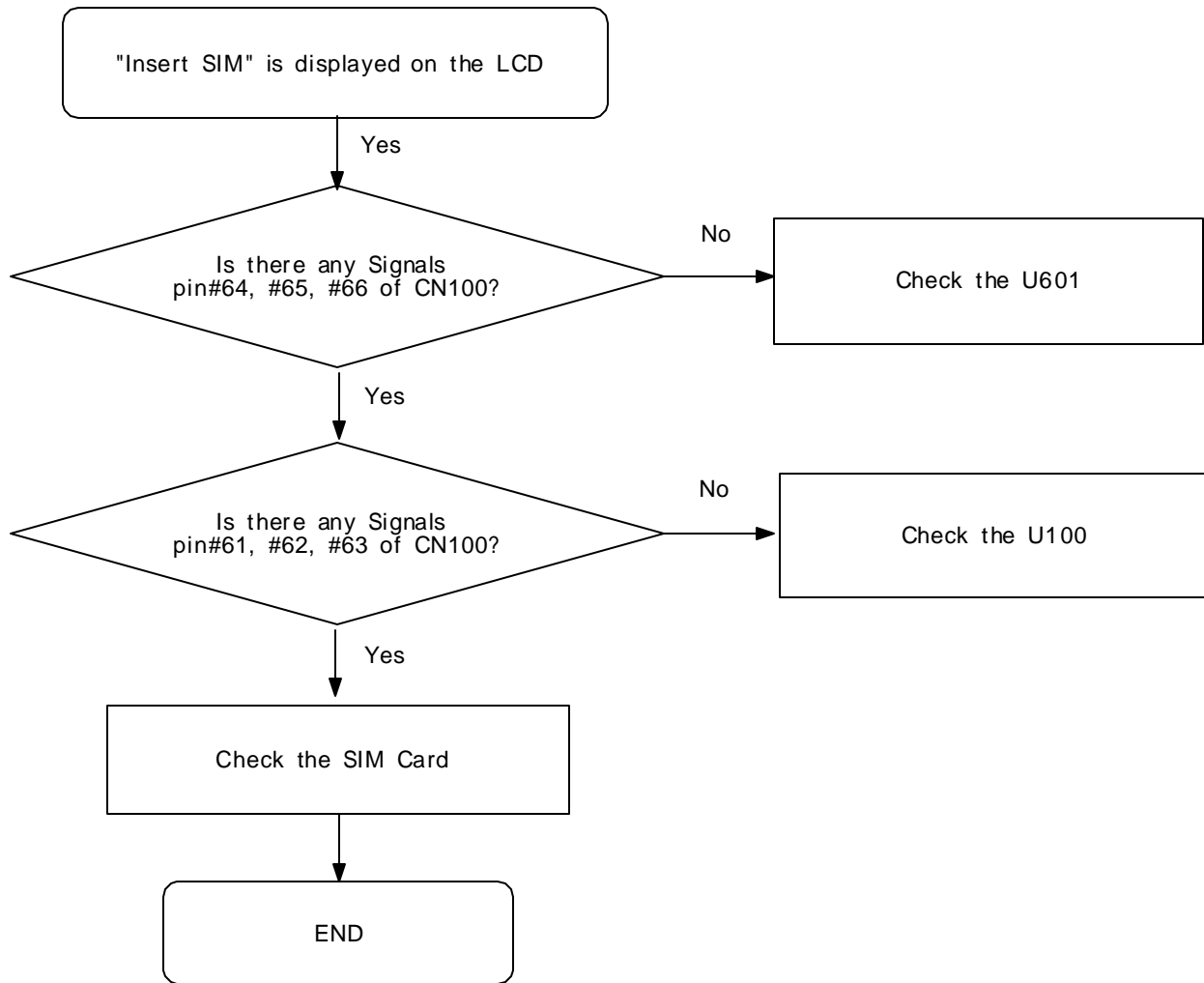
2. Initialization



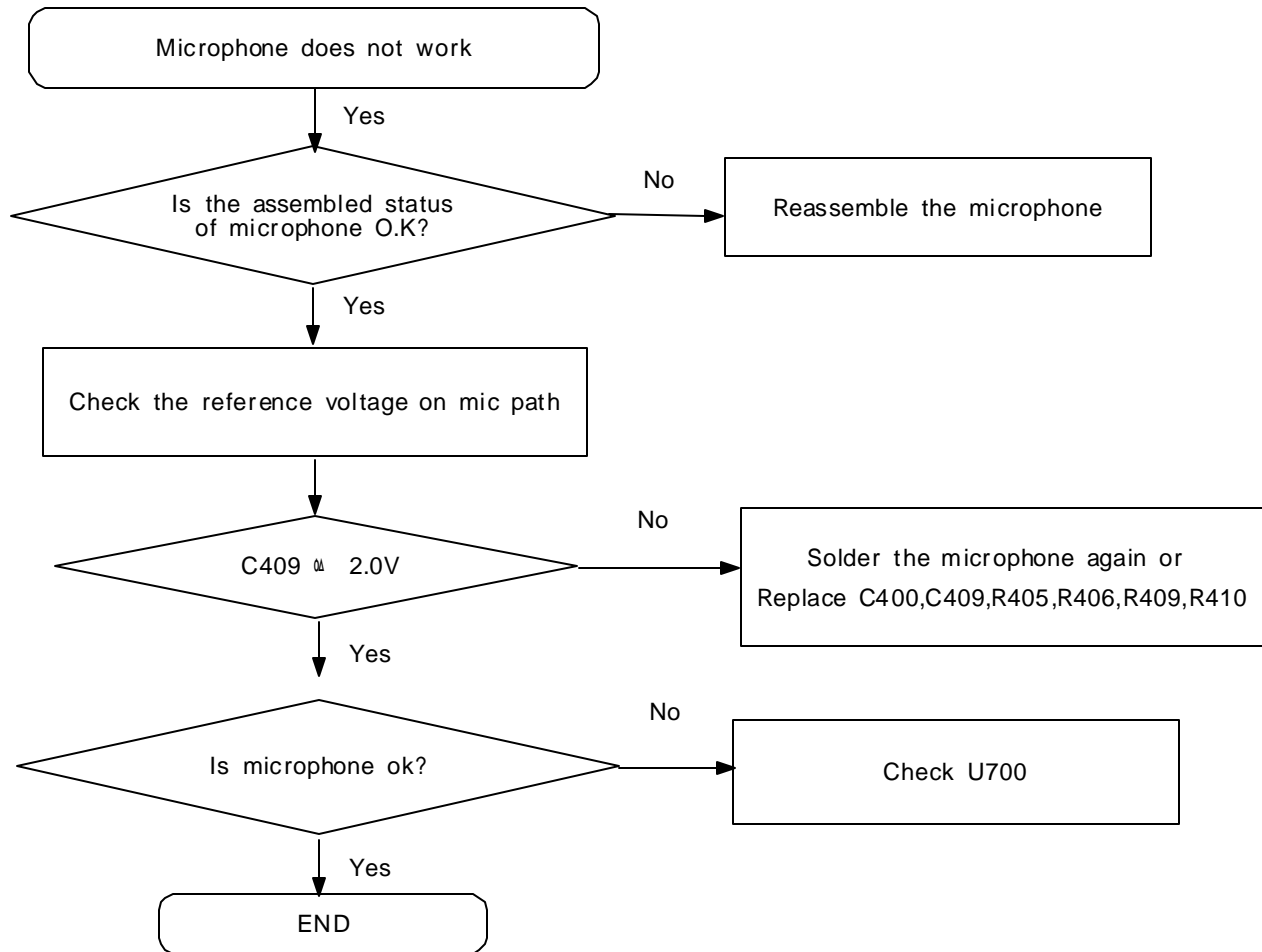
3. Charging



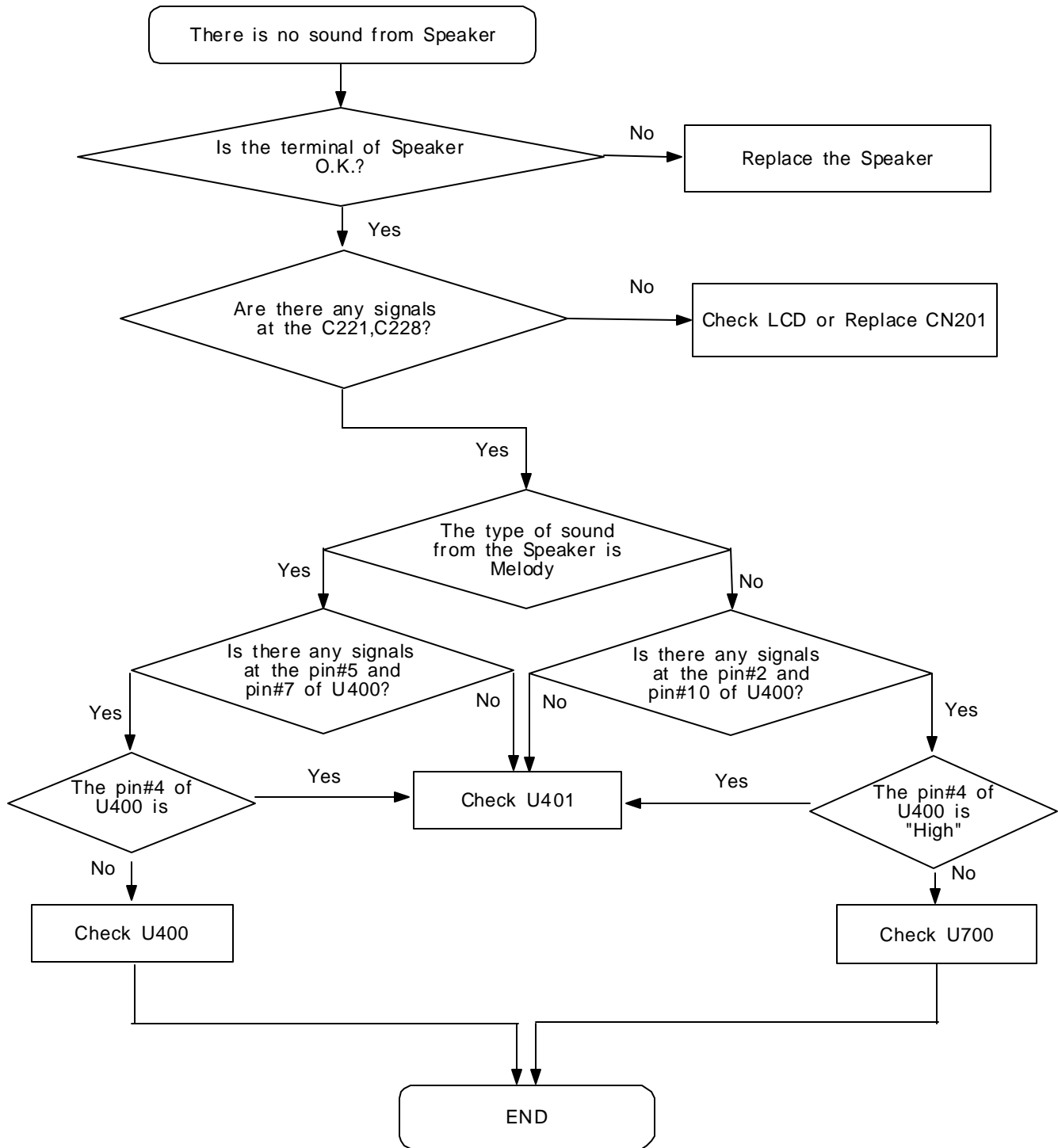
4. Sim



5. Microphone Part

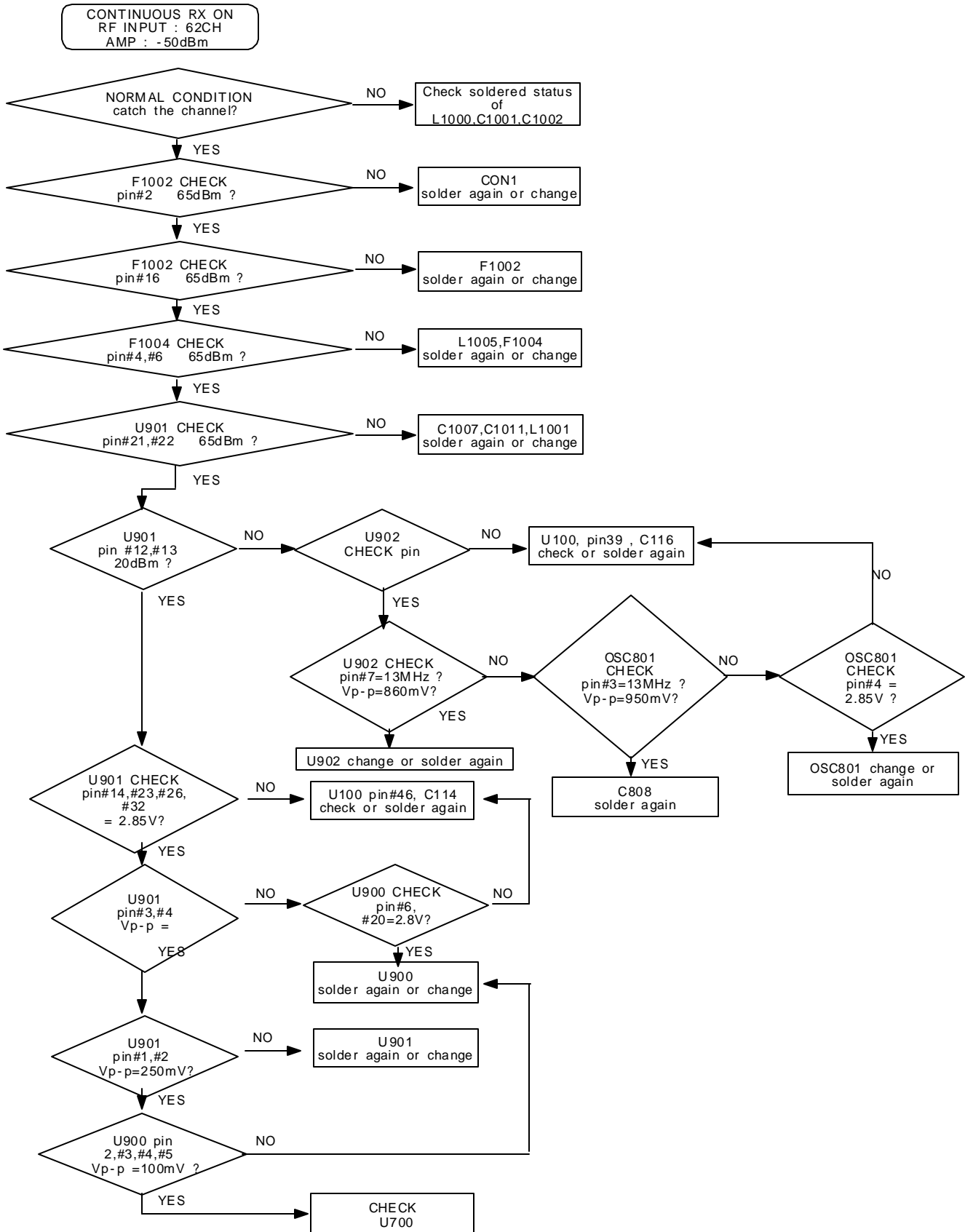


6. Speaker

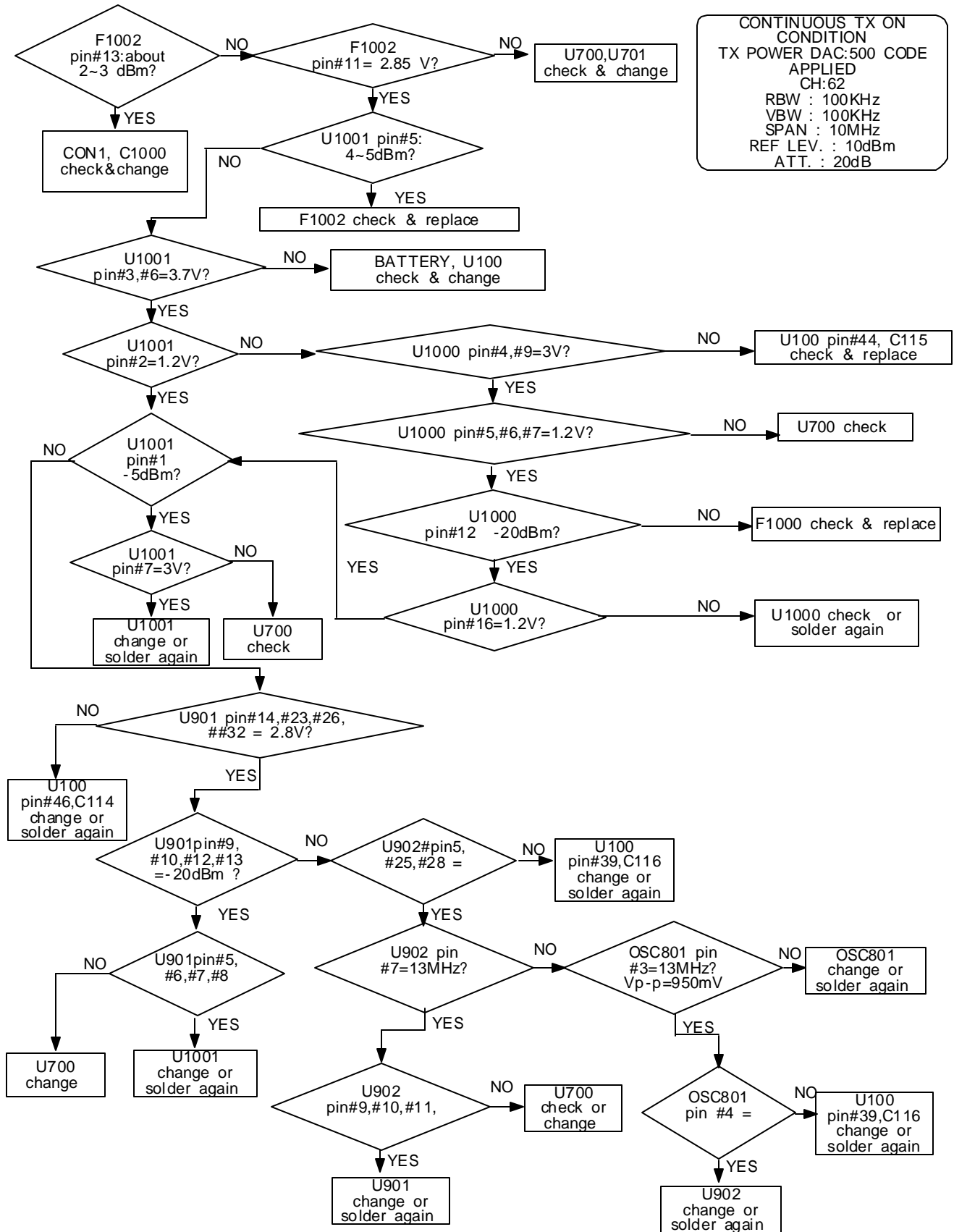




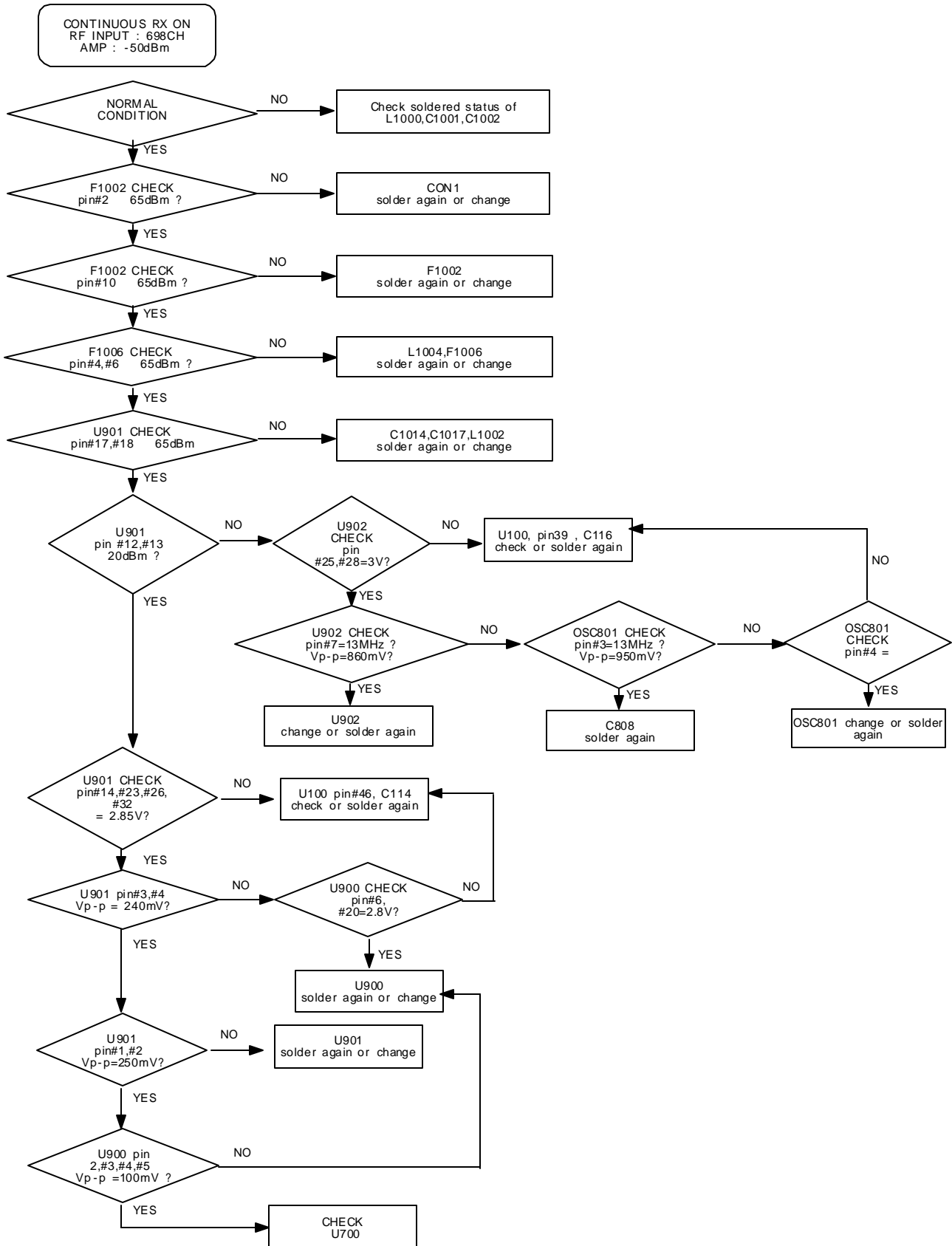
7. RX\_EGSM



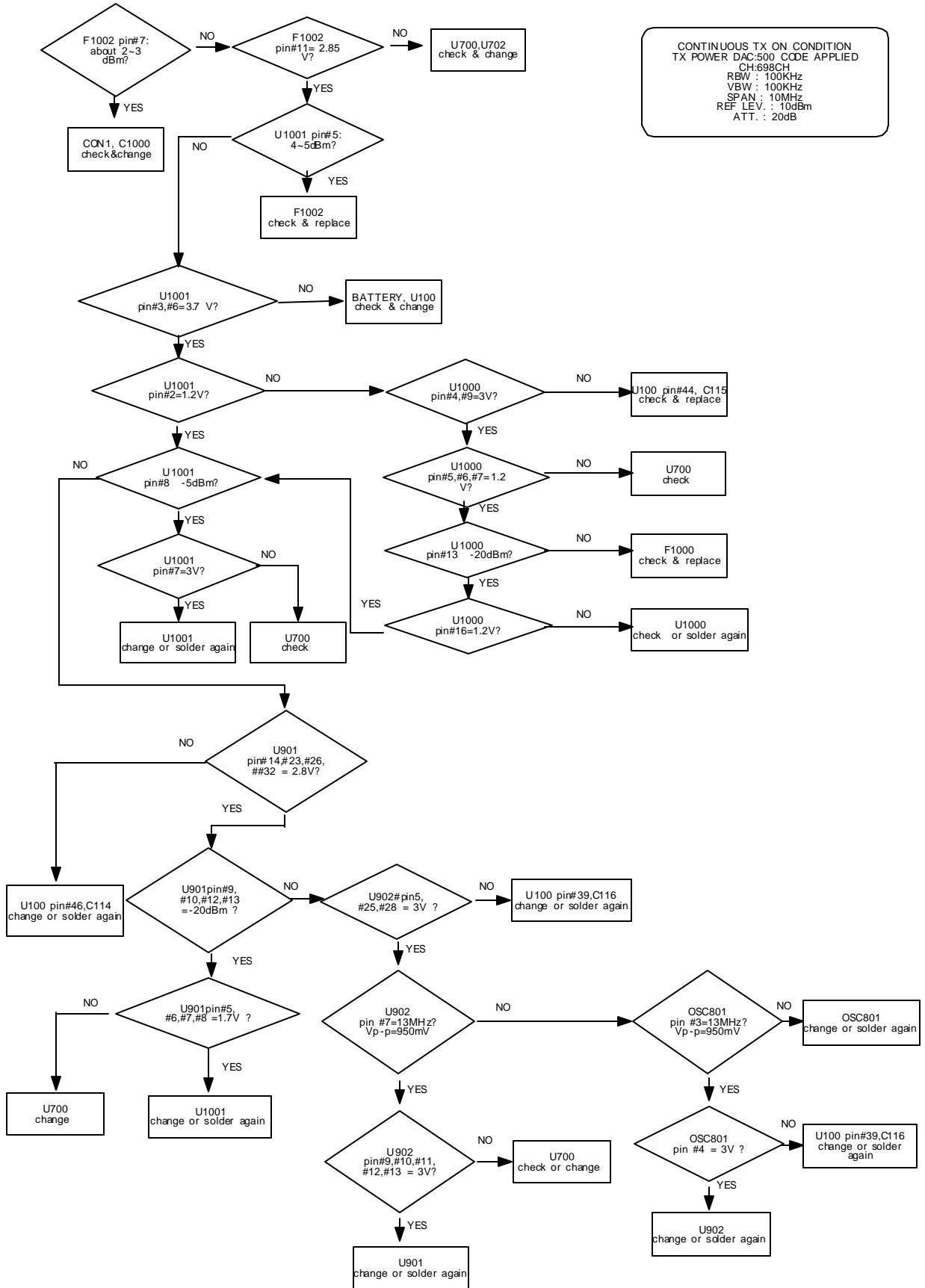
8. TX\_EGSM



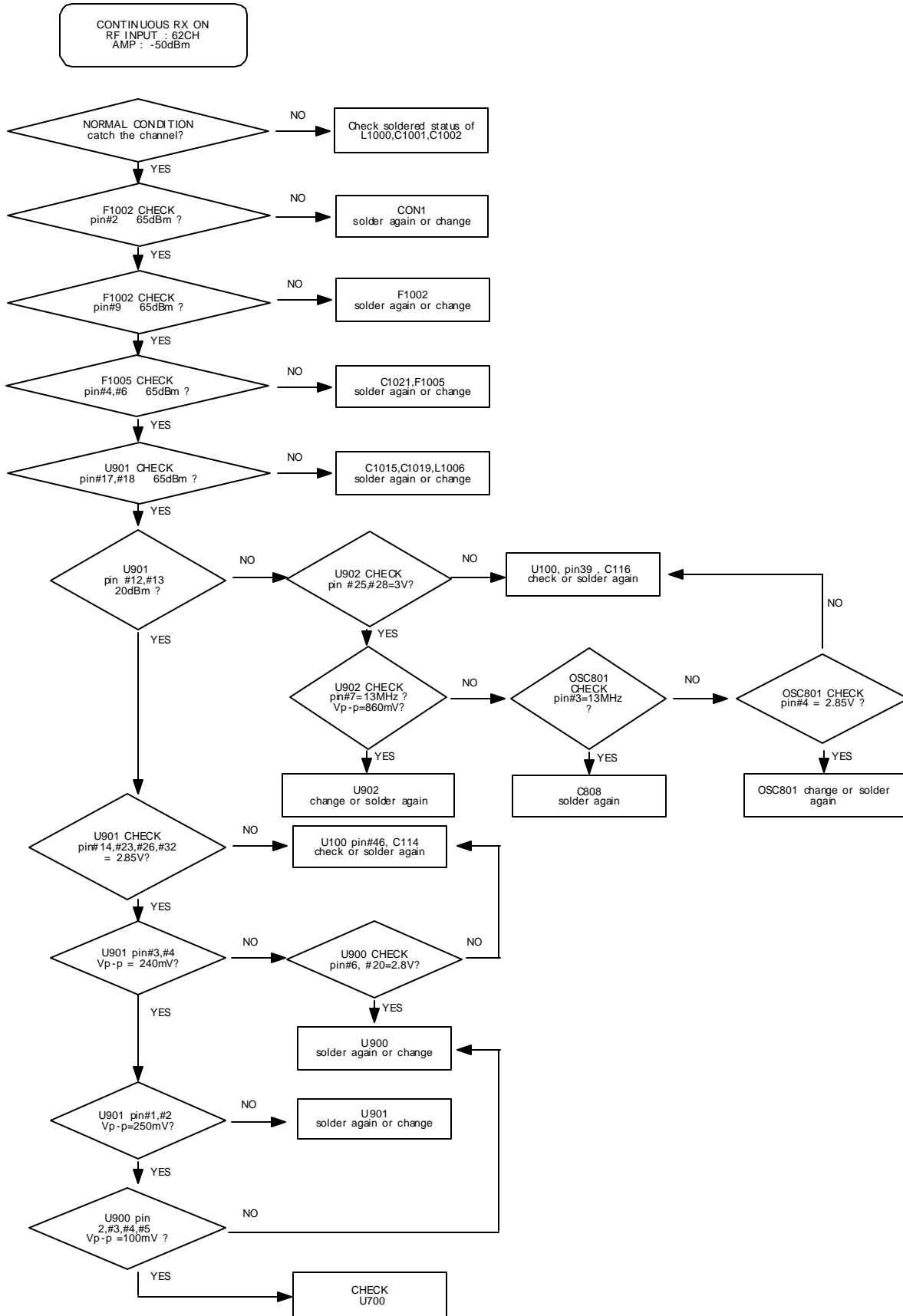
9. RX\_DCS



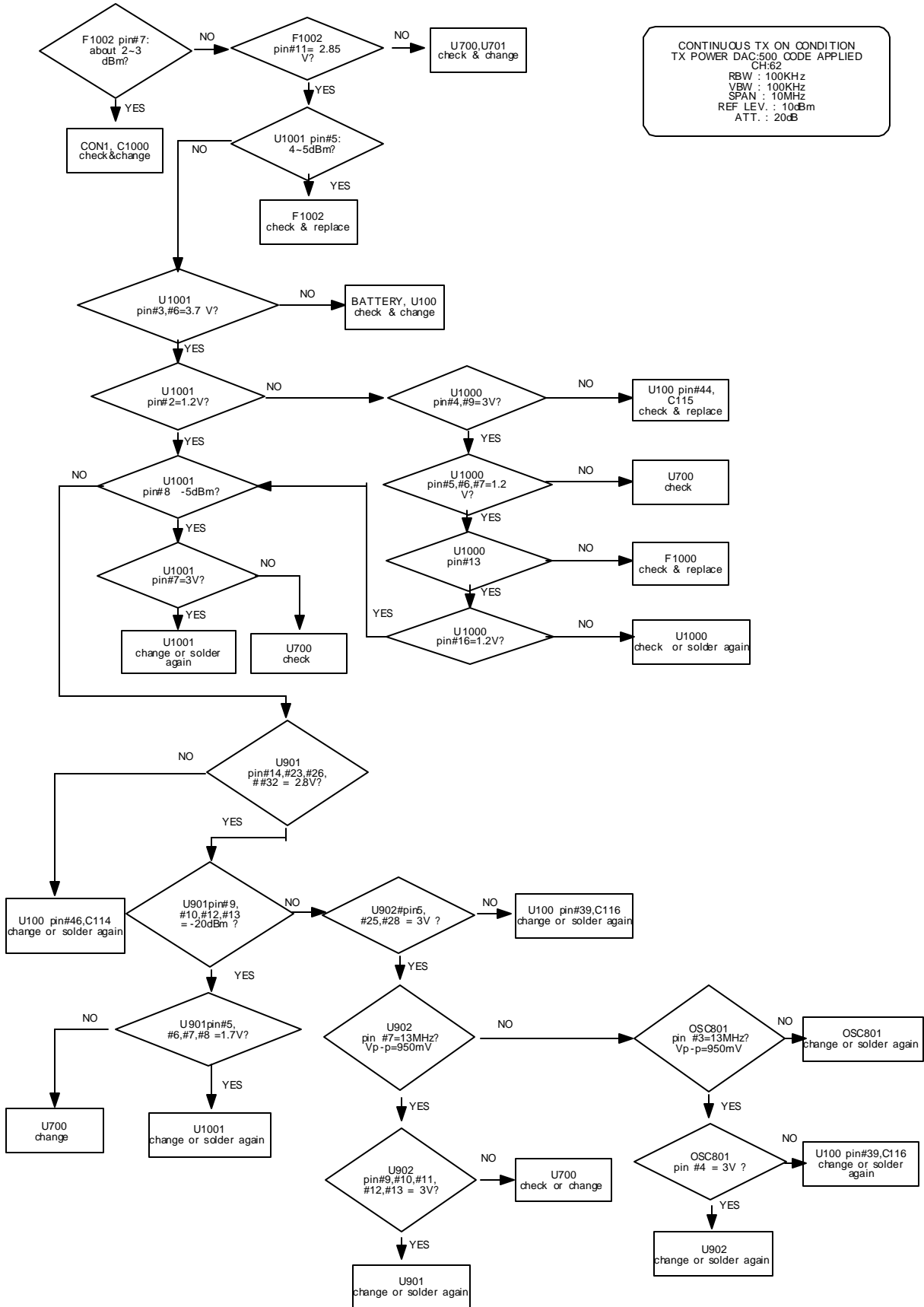
10. TX\_DCS



11. RX\_PCS



12. TX\_PCS



CONTINUOUS TX ON CONDITION  
TX POWER DAC:500 CODE APPLIED  
CH:62  
RBW : 100KHz  
VBW : 100KHz  
SPAN : 10MHz  
REF LEV. : 10dBm  
ATT. : 20dB