



# DUAL BAND Mobile Cellular Phone SGH-R208

# SERVICE Manual

## DUAL BAND MOBILE CELLULAR PHONE



## CONTENTS

1. Exploded Views and Parts List
2. PCB Diagrams
3. Electrical Parts List
4. Block Diagrams
5. Flow Chart of Troubleshooting and Circuit Diagrams



Samsung Electronics Co.,Ltd.  
Printed in Korea  
03/2001 Rev 1.0  
GH68-02377A

---

## 1. Exploded Views and Parts List

- 1-1 Main
- 1-2 Main Parts List
- 1-3 Travel Adapter
- 1-4 Travel Adapter Parts List
- 1-5 Ciger Light Adapter
- 1-6 Ciger Light Adapter Parts List
- 1-7 Test Jig
- 1-8 EAR Microphone
- 1-9 Data Kit
- 1-10 Battery Charger

## 2. PCB Diagrams

- 2-1 Main Top
- 2-2 Main Bottom

## 3. Electrical Parts List

- 3-1 Main Parts List Top
- 3-2 Main Parts List Bottom

## 4. Block Diagrams

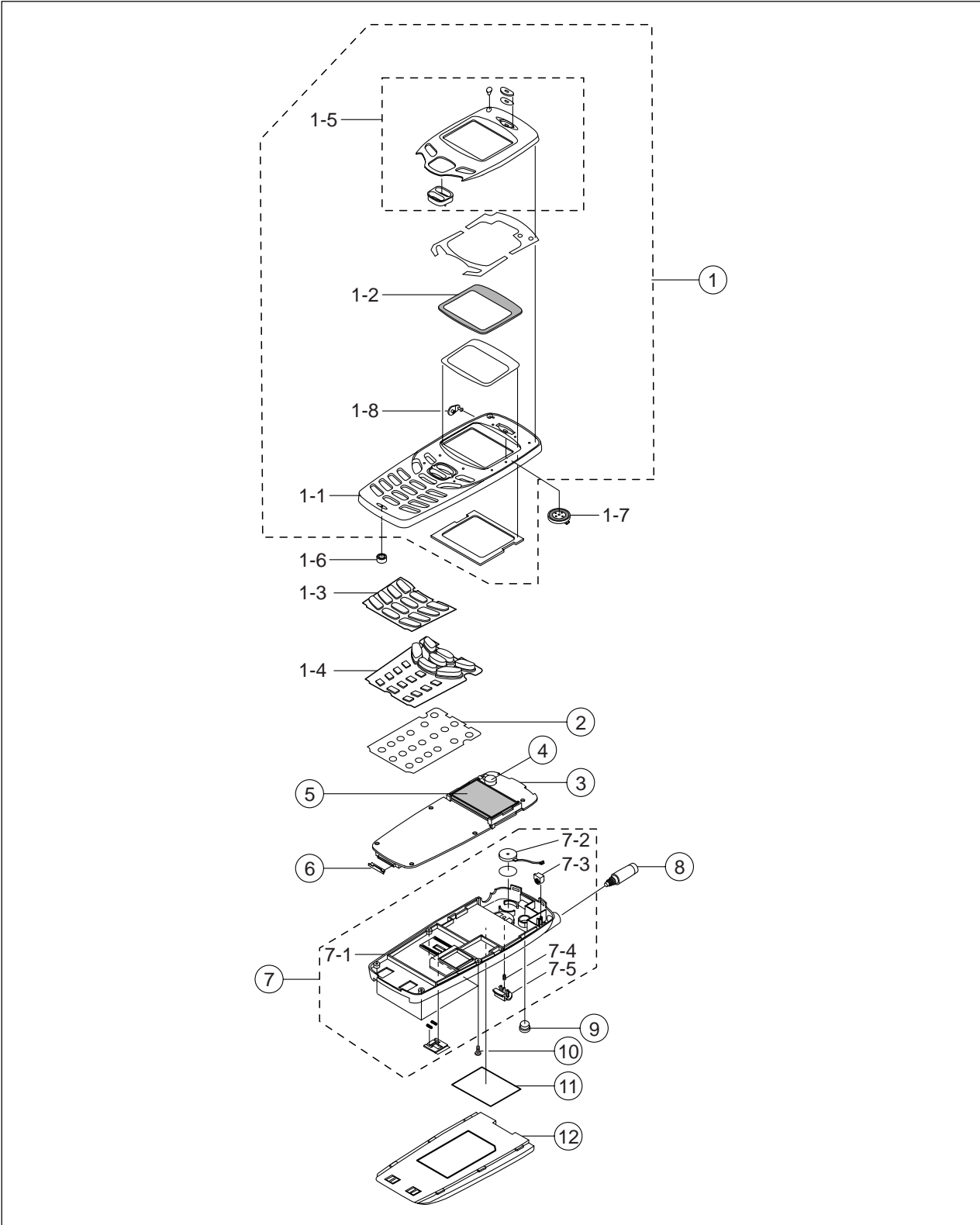
- 4-1 Main Baseband
- 4-2 Main RF
  - 4-2-1 RF Transmit Part
  - 4-2-2 RF Receive Part

## 5. Flow Chart of Troubleshooting and Circuit Diagrams

- 5-1 Power ON
  - 5-2 Initial
  - 5-3 Charging Part
  - 5-4 Sim Part
  - 5-5 Microphone Part
  - 5-6 Speaker Part
  - 5-7 Key Data Input
  - 5-8 Alert Tone
  - 5-9 Ring Indicator
  - 5-10 Back Light
  - 5-11 GSM Receiver
  - 5-12 GSM Transmitter
  - 5-13 DCS Receiver
  - 5-14 DCS Transmitter
-

# 1. Exploded Views and Parts List

## 1-1 Main



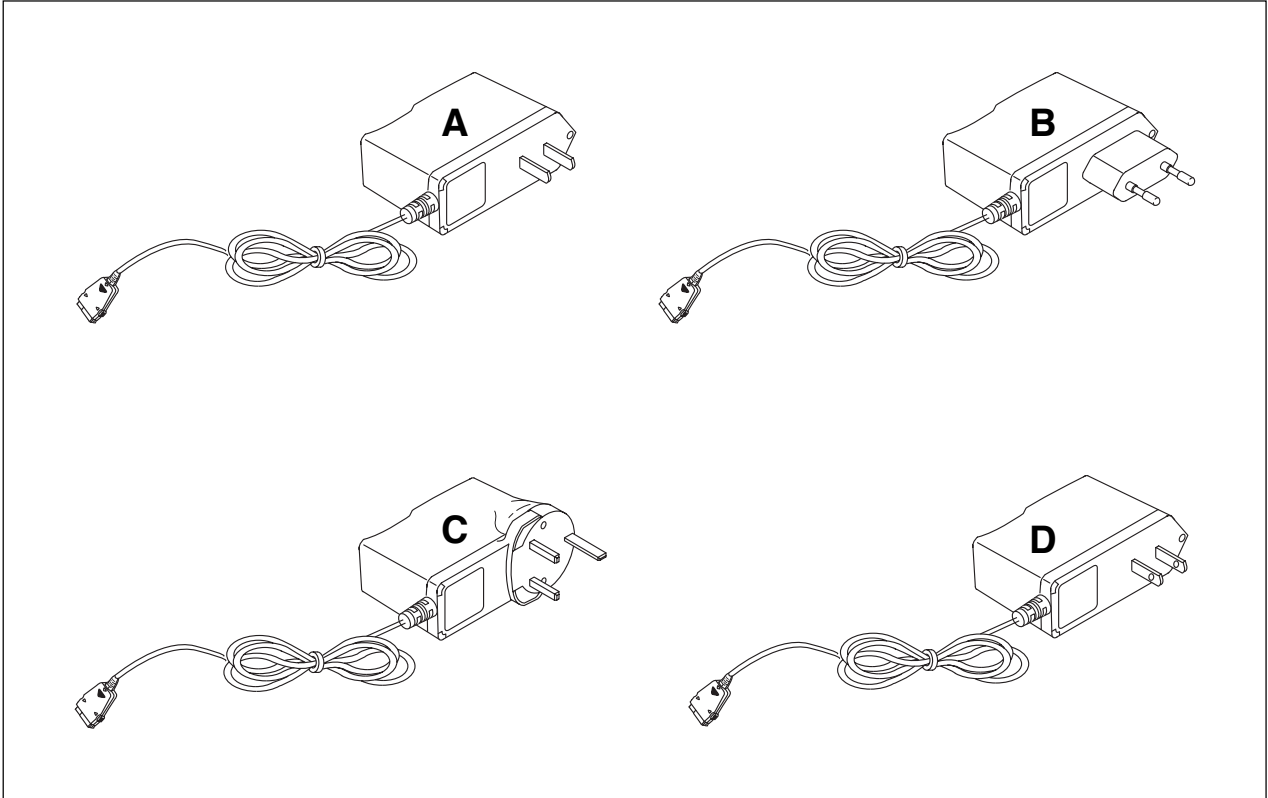
## 1-2 Main Parts List

Location No.		Description	SEC CODE			Remark
			Navy Blue	Gold	Dark Silver	
1		MEC-FRONT COVER	GH75-01439A	GH75-01439B	GH75-01439C	SA
	1-1	FRONT COVER	GH72-02670A	GH72-02670B	GH72-02670C	SNA
	1-2	WINDOW LCD	GH72-02672B	GH72-02672B	GH72-02672B	SNA
	1-3	FI KEY	GH72-03043A	GH72-02782A	GH72-02782A	SA
	1-4	MEC-KEYPAD	GH75-01164A	GH75-01164A	GH75-01164A	SA
	1-5	MEC-DUMMY COVER	GH75-01163A	GH75-01163A	GH75-01163A	SNA
	1-6	MIC	GH59-00240B	GH59-00240B	GH59-00240B	SA
	1-7	SPEAKER	3001-001233	3001-001233	3001-001233	SA
	1-8	EARPHONE COVER	GH73-00757A	GH73-00757D	GH73-00757E	SNA
2		DOME SHEET	GH72-02984A	GH72-02984A	GH72-02984A	SA
3		MAIN PBA	GH92-01222A	GH92-01222A	GH92-01222A	SA
4		BUZZER	3002-001098	3002-001098	3002-001098	SA
5		DISPLAY LCD	GH07-00075B	GH07-00075B	GH07-00075B	SA
6		I/F COVER	GH73-00758A	GH73-00758E	GH73-00758F	SA
7		MEC-REAR COVER	GH75-01165A	GH75-01165D	GH75-01165E	SA
	7-1	REAR COVER	GH72-02674A	GH72-02674D	GH72-02674E	SNA
	7-2	VIBRATOR	GH31-00019A	GH31-00019A	GH31-00019A	SA
	7-3	BRACKET-ANT	GH71-00505A	GH71-00505A	GH71-00505A	SNA
	7-4	SPRING LOCKER	GH70-10633A	GH70-10633A	GH70-10633A	SNA
	7-5	LOCKER MAIN	GH72-02676A	GH72-02676D	GH72-02676E	SNA
8		ANTENNA	GH42-00141C	GH42-00141E	GH42-00141D	SA
9		R/F COVER	GH73-00759A	GH73-00759D	GH73-00759E	SA
10		SCREW-MACHINE	6001-001542	6001-001542	6001-001542	SA
11		LABEL	GH68-02245A	GH68-02245A	GH68-02245A	SA
12		BATTERY	GH43-00398A	GH43-00398D	GH43-00398E	SA

---

## 1-3 Travel Adapter

---



---

## 1-4 Travel Adapter Parts List

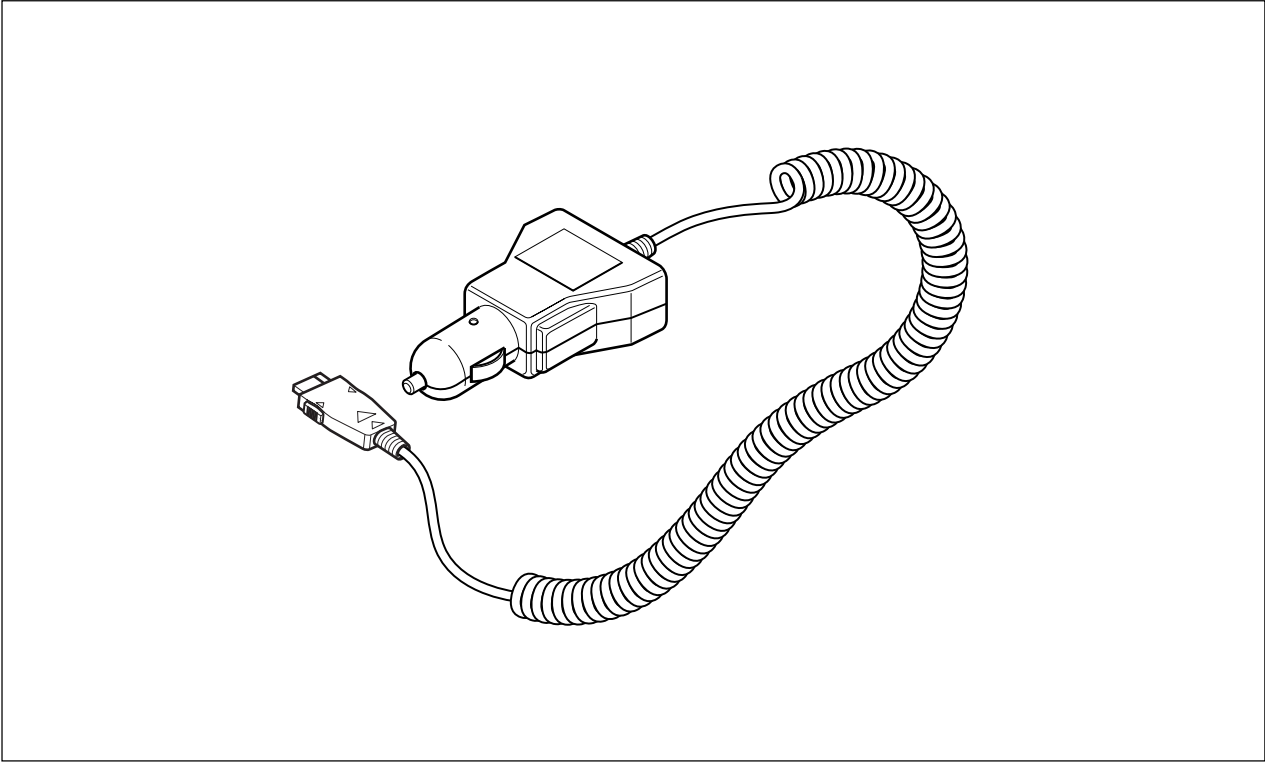
---

TYPE	SEC CODE	REMARK
A	GH44-00171A	CHINA
B	GH44-00184A	EUROPE
C	GH44-00171C	UNITED KINGDOM
D	Gh44-00171E	TAIWAN

---

### 1-5 Ciger Light Adapter

---



### 1-6 Ciger Light Adapter Parts List

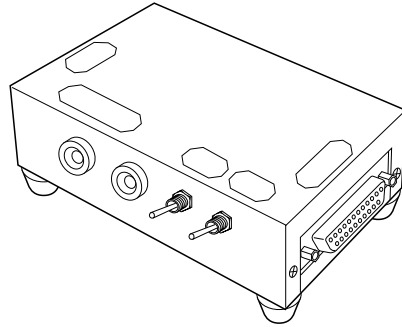
---

DESCRIPTION	SEC CODE	REMARK
Ciger Light Adapter Code	GH44-00170A	BLACK

---

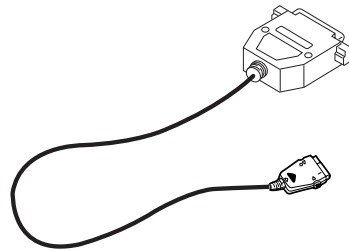
## 1-7 Test Jig

---



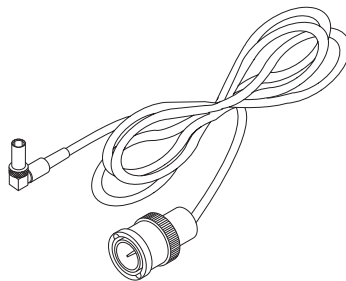
TEST JIG

GH80-10508A



TEST JIG CABLE

GH39-00079A

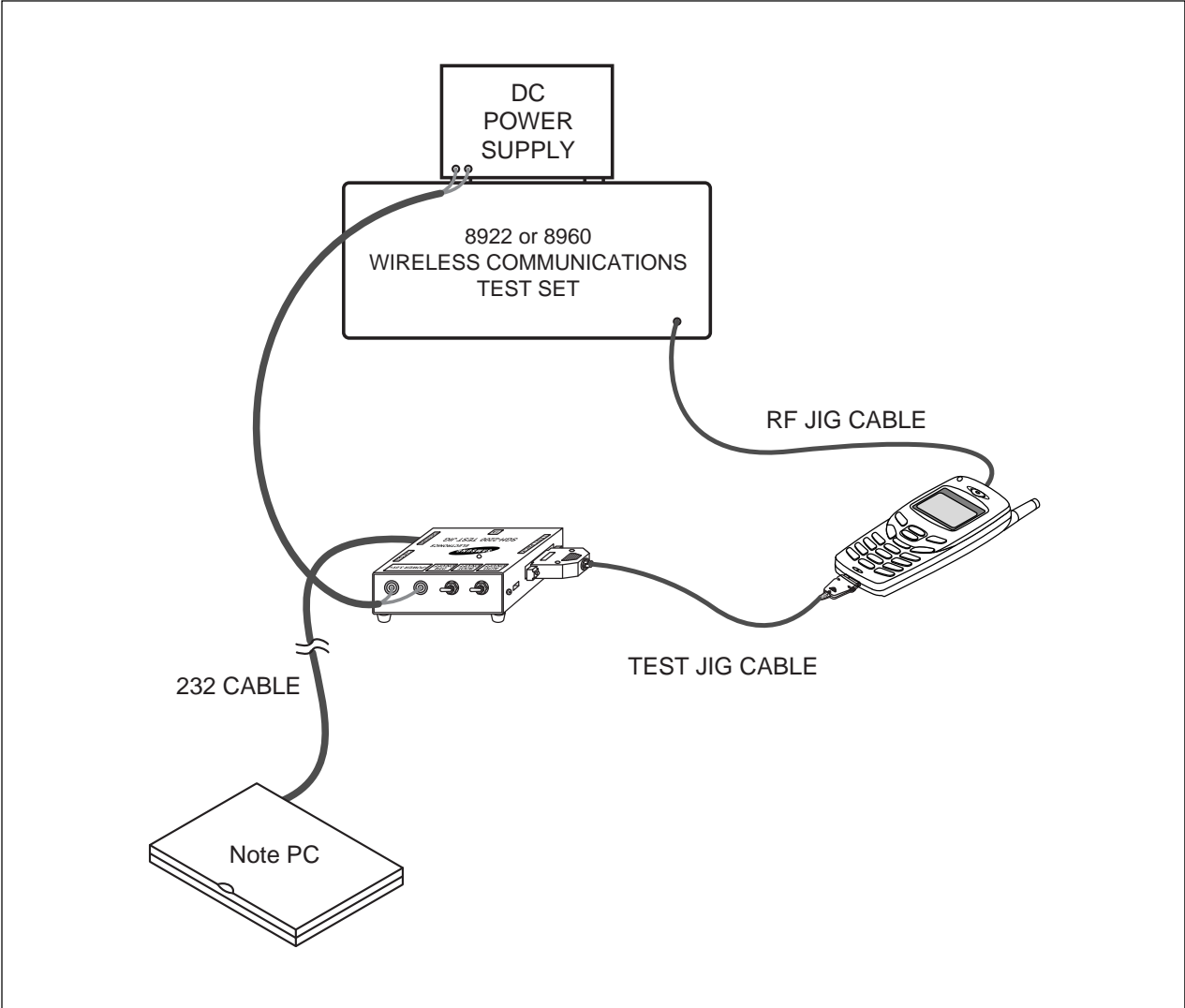


RF CABLE

GH39-00090A



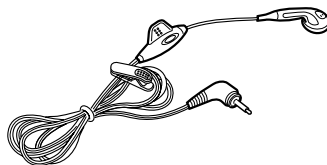
**1-7-1 Test Jig**



---

## 1-8 EAR Microphone

---



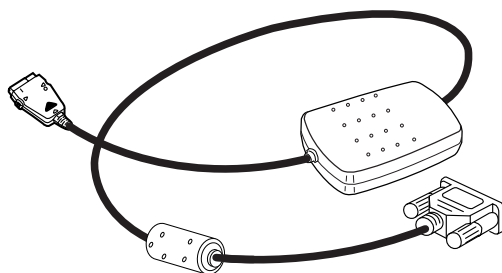
EAR MICROPHONE

GH59-00168A

---

## 1-9 Data Kit

---



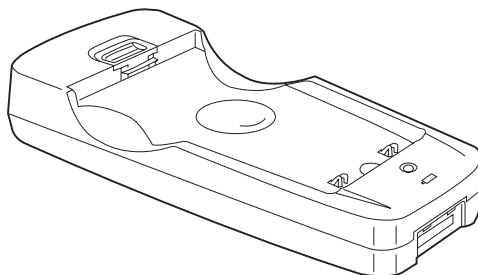
DATA KIT

GH39-00078A

---

## 1-10 Battery Charger

---

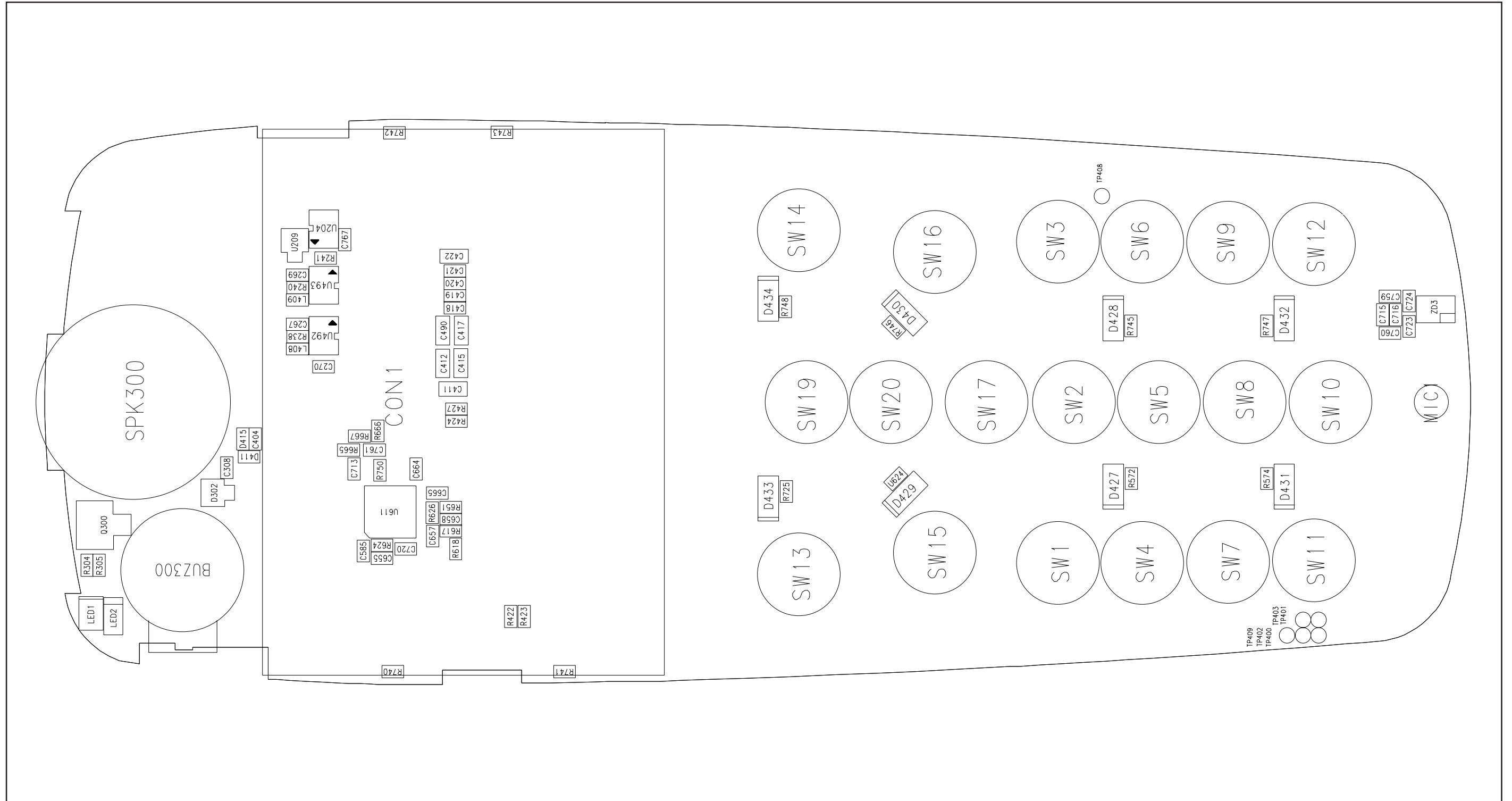


BATTERY CHARGER

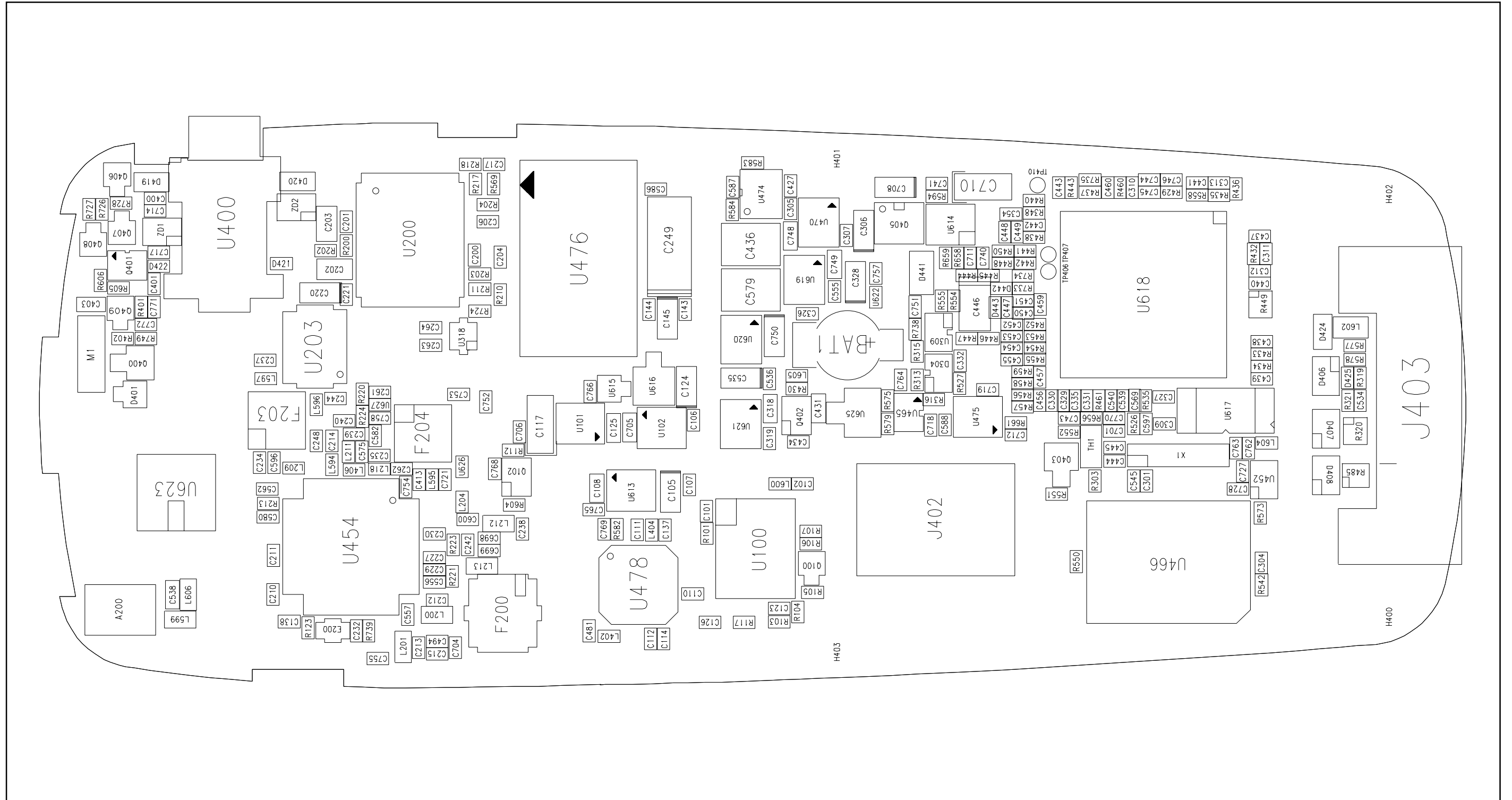
GH44-00221B

## 2. PCB Diagrams

### 2-1 Main Top



2-2 Main Bottom



### 3. Electrical Parts List

#### 3-1 Main Parts List Top

NO	SEC CODE	Reference	Part Description	Vendor Part No.
1	0401-001033	D441	DIODE-SWITCHING,MCL4154,25V,200mA,M-MELF	MCL4154
2	0406-001083	D406	DIODE-TVS,6.1/-/7.2V,150W,SOT-323-5L	ESDA6V1W5
3	0406-001083	D407	DIODE-TVS,6.1/-/7.2V,150W,SOT-323-5L	ESDA6V1W5
4	0406-001083	D408	DIODE-TVS,6.1/-/7.2V,150W,SOT-323-5L	ESDA6V1W5
5	0407-001002	D401	DIODE-ARRAY,DAN222,80V,300mA,CA2-3,EM3	DAN222
6	0407-001007	D304	DIODE-ARRAY,UMN1,80V,25mA,CA4-2,UM5	UMN1
7	0501-000218	Q400	TR-SMALL SIGNAL,2SC4081,NPN,200mW,UMT	2SC4081
8	0501-000225	Q100	TR-SMALL SIGNAL,2SC4617,NPN,200mW,EM3	2SC4617
9	0501-002011	Q403	TR-SMALL SIGNAL,2SD2114K,NPN,200mW,SOT-23	2SD2114KT146V
10	0502-001201	Q405	TR-POWER,ZXT13P20DE6,PNP,1100MW,SOT-23-6	ZXT13P20DE6
11	0504-000167	U615	TR-DIGITAL,RN1102,NPN,100MW,10K/10K	DTC114EE/TR
12	0504-001012	Q406	TR-DIGITAL,DTC114YE,NPN,150MW,10K/47K	DTC114YE
13	0504-001012	Q407	TR-DIGITAL,DTC114YE,NPN,150MW,10K/47K	DTC114YE
14	0504-001012	Q408	TR-DIGITAL,DTC114YE,NPN,150MW,10K/47K	DTC114YE
15	0504-001021	U616	TR-DIGITAL,DTB113ZK,PNP,200MW,10K,SC-59	DTB113ZK
16	0504-001058	U465	TR-DIGITAL,RN4985,NPN/PNP,200mW,2.2Kohm	RN4985
17	0505-001332	Q401	FET-SILICON,FDG6301,N,25V,0.22A,SC70-6	FDG6301N
18	0505-001376	U474	FET-SILICON,FDC6329L,N/P,8V,2.5A,0.7W,SC-74	SI3865DV
19	0505-001423	Q102	FET-SILICON,FDG6323L,N/P,-,-,0.3W,SC70-6	FDG6323L
20	0505-001423	Q402	FET-SILICON,FDG6323L,N/P,-,-,0.3W,SC70-6	FDG6323L
21	0506-001004	U309	TR-ARRAY,UMC5N,NPN/PNP,2,50V,-,-100mA,3	UMC5NTR
22	0601-001542	LED3	LED,CHIP,BLUE,1.2X0.8MM,480NM	E1S03-AB1A7
23	0601-001542	LED4	LED,CHIP,BLUE,1.2X0.8MM,480NM	E1S03-AB1A7
24	0601-001542	LED5	LED,CHIP,BLUE,1.2X0.8MM,480NM	E1S03-AB1A7
25	0601-001542	LED6	LED,CHIP,BLUE,1.2X0.8MM,480NM	E1S03-AB1A7
26	0801-002540	U452	IC-CMOS LOGIC;NC7SZ19P6X	NC7SZ19P6X
27	1103-001185	U617	IC-EEPROM,24A2561,32Kx8Bit,TSSOP,8P	S524AD0XF1
28	1106-001326	U464	IC-SRAM,616FU4110,256Kx16Bit,uBGA,48P	KM616FU4110CFI-7
29	1107-001304	U466	IC-FLASH MEMORY,AM29DL162,2MX8BIT,48P	AM29DL162DT-90WCI
30	1201-001785	U476	IC-POWER AMP,08122,-,8P,-,DUAL,34DB	PF08122B-TB
31	1203-001204	U470	IC-VOLTAGE REGULATOR,2981,SOT-23,5P,59MIL	LP2981AIM5X-3.3
32	1203-001454	U101	IC-VOLTAGE REGULATOR,2981,SOT-23,5P,59MIL	LP2981AIM5X-3.0
33	1203-001454	U102	IC-VOLTAGE REGULATOR,2981,SOT-23,5P,59MIL	LP2981AIM5X-3.0
34	1203-001701	U613	IC-VOLTAGE REGULATOR,2982,SOT-23,5P,3.0V	LP2982AIM5X-3.0
35	1203-002127	U614	IC-BATTERY,1734,SOT-23,6P,150MIL	LTC1734ES6-4.2#TR
36	1203-002128	U619	IC-VOLTAGE REGULATOR,2985,MICRO SMD,5P	LP2985AIBPX-3.0
37	1203-002128	U620	IC-VOLTAGE REGULATOR,2985,MICRO SMD,5P	LP2985AIBPX-3.0
38	1203-002160	U621	IC-VOLTAGE REGULATOR,2981,SMD,5P,63MIL	LP2981AIBPX-3.3

NO	SEC CODE	Reference	Part Description	Vendor Part No.
39	1203-002247	U475	IC-VOL. DETECTOR,S-809,SOT-23-5,5P	S-80926ALMP-DAP-T2
40	1205-001881	U618	IC-COMM. CONTROLLER,VP40575,BGA,180P	VP40575
41	1205-001935	U454	IC-TRANSCEIVER,HD155128TF,TP,56P,-,-,3V	HD155128TF
42	1209-001337	U478	IC-PLL/SYNTHESISER,LCC,28P,3.6V,-40to+85C	SI4133-MLP28
43	1404-001005	TH1	THERMISTOR-NTC,47Kohm,5%,4050K,2.0mW/C	NTH5G20P40B473J07TE
44	1405-001018	D419	VARISTOR,14V,-,1.6x0.8mm,TP	VC060314A300R
45	1405-001018	D420	VARISTOR,14V,-,1.6x0.8mm,TP	VC060314A300R
46	1405-001018	D424	VARISTOR,14V,-,1.6x0.8mm,TP	VC060314A300R
47	1405-001082	D435	VARISTOR,5.6V,20A,1x0.5x0.6mm	VC04025X150R
48	1405-001082	D436	VARISTOR,5.6V,20A,1x0.5x0.6mm	VC04025X150R
49	1405-001082	D437	VARISTOR,5.6V,20A,1x0.5x0.6mm	VC04025X150R
50	1405-001082	D438	VARISTOR,5.6V,20A,1x0.5x0.6mm	VC04025X150R
51	1405-001082	D439	VARISTOR,5.6V,20A,1x0.5x0.6mm	VC04025X150R
52	1405-001082	D440	VARISTOR,5.6V,20A,1x0.5x0.6mm	VC04025X150R
53	1405-001093	D421	VARISTOR,14V,20A,1x0.5x0.6mm	VC040214X500R
54	1405-001093	D422	VARISTOR,14V,20A,1x0.5x0.6mm	VC040214X500R
55	1405-001093	D425	VARISTOR,14V,20A,1x0.5x0.6mm	VC040214X500R
56	2007-000138	R200	R-CHIP,100ohm,5%,1/16W,DA,TP,1005	RK73K1ETP101J
57	2007-000138	R321	R-CHIP,100ohm,5%,1/16W,DA,TP,1005	RK73K1ETP101J
58	2007-000139	R203	R-CHIP,220ohm,5%,1/16W,DA,TP,1005	RK73K1ETP221J
59	2007-000139	R204	R-CHIP,220ohm,5%,1/16W,DA,TP,1005	RK73K1ETP221J
60	2007-000139	R444	R-CHIP,220ohm,5%,1/16W,DA,TP,1005	RK73K1ETP221J
61	2007-000139	R447	R-CHIP,220ohm,5%,1/16W,DA,TP,1005	RK73K1ETP221J
62	2007-000140	R106	R-CHIP,1Kohm,5%,1/16W,DA,TP,1005	RK73K1ETP102J
63	2007-000140	R107	R-CHIP,1Kohm,5%,1/16W,DA,TP,1005	RK73K1ETP102J
64	2007-000140	R575	R-CHIP,1Kohm,5%,1/16W,DA,TP,1005	RK73K1ETP102J
65	2007-000140	R584	R-CHIP,1Kohm,5%,1/16W,DA,TP,1005	RK73K1ETP102J
66	2007-000140	R738	R-CHIP,1Kohm,5%,1/16W,DA,TP,1005	RK73K1ETP102J
67	2007-000141	R103	R-CHIP,2.2Kohm,5%,1/16W,DA,TP,1005	RK73K1ETP222J
68	2007-000141	R223	R-CHIP,2.2Kohm,5%,1/16W,DA,TP,1005	RK73K1ETP222J
69	2007-000141	R433	R-CHIP,2.2Kohm,5%,1/16W,DA,TP,1005	RK73K1ETP222J
70	2007-000141	R434	R-CHIP,2.2Kohm,5%,1/16W,DA,TP,1005	RK73K1ETP222J
71	2007-000145	R117	R-CHIP,6.2Kohm,5%,1/16W,DA,TP,1005	RK73K1ETP622J
72	2007-000148	R101	R-CHIP,10Kohm,5%,1/16W,DA,TP,1005	RK73K1ETP103J
73	2007-000148	R112	R-CHIP,10Kohm,5%,1/16W,DA,TP,1005	RK73K1ETP103J
74	2007-000148	R313	R-CHIP,10Kohm,5%,1/16W,DA,TP,1005	RK73K1ETP103J
75	2007-000148	R315	R-CHIP,10Kohm,5%,1/16W,DA,TP,1005	RK73K1ETP103J
76	2007-000148	R303	R-CHIP,10Kohm,5%,1/16W,DA,TP,1005	RK73K1ETP103J
77	2007-000148	R348	R-CHIP,10Kohm,5%,1/16W,DA,TP,1005	RK73K1ETP103J
78	2007-000148	R430	R-CHIP,10Kohm,5%,1/16W,DA,TP,1005	RK73K1ETP103J
79	2007-000148	R435	R-CHIP,10Kohm,5%,1/16W,DA,TP,1005	RK73K1ETP103J
80	2007-000148	R438	R-CHIP,10Kohm,5%,1/16W,DA,TP,1005	RK73K1ETP103J

NO	SEC CODE	Reference	Part Description	Vendor Part No.
81	2007-000148	R450	R-CHIP,10Kohm,5%,1/16W,DA,TP,1005	RK73K1ETP103J
82	2007-000148	R461	R-CHIP,10Kohm,5%,1/16W,DA,TP,1005	RK73K1ETP103J
83	2007-000148	R526	R-CHIP,10Kohm,5%,1/16W,DA,TP,1005	RK73K1ETP103J
84	2007-000148	R527	R-CHIP,10Kohm,5%,1/16W,DA,TP,1005	RK73K1ETP103J
85	2007-000148	R535	R-CHIP,10Kohm,5%,1/16W,DA,TP,1005	RK73K1ETP103J
86	2007-000148	R542	R-CHIP,10Kohm,5%,1/16W,DA,TP,1005	RK73K1ETP103J
87	2007-000148	R550	R-CHIP,10Kohm,5%,1/16W,DA,TP,1005	RK73K1ETP103J
88	2007-000148	R554	R-CHIP,10Kohm,5%,1/16W,DA,TP,1005	RK73K1ETP103J
89	2007-000148	R558	R-CHIP,10Kohm,5%,1/16W,DA,TP,1005	RK73K1ETP103J
90	2007-000148	R573	R-CHIP,10Kohm,5%,1/16W,DA,TP,1005	RK73K1ETP103J
91	2007-000148	R604	R-CHIP,10Kohm,5%,1/16W,DA,TP,1005	RK73K1ETP103J
92	2007-000148	R661	R-CHIP,10Kohm,5%,1/16W,DA,TP,1005	RK73K1ETP103J
93	2007-000148	R723	R-CHIP,10Kohm,5%,1/16W,DA,TP,1005	RK73K1ETP103J
94	2007-000152	R429	R-CHIP,20Kohm,5%,1/16W,DA,TP,1005	RK73K1ETP203J
95	2007-000153	R213	R-CHIP,22Kohm,5%,1/16W,DA,TP,1005	RK73K1ETP223J
96	2007-000155	R104	R-CHIP,27Kohm,5%,1/16W,DA,TP,1005	RK73K1ETP273J
97	2007-000157	R441	R-CHIP,47Kohm,5%,1/16W,DA,TP,1005	RK73K1ETP473J
98	2007-000157	R442	R-CHIP,47Kohm,5%,1/16W,DA,TP,1005	RK73K1ETP473J
99	2007-000157	R443	R-CHIP,47Kohm,5%,1/16W,DA,TP,1005	RK73K1ETP473J
100	2007-000159	R656	R-CHIP,56Kohm,5%,1/16W,DA,TP,1005	RK73K1ETP563J
101	2007-000162	R316	R-CHIP,100Kohm,5%,1/16W,DA,TP,1005	RK73K1ETP104J
102	2007-000162	R402	R-CHIP,100Kohm,5%,1/16W,DA,TP,1005	RK73K1ETP104J
103	2007-000162	R432	R-CHIP,100Kohm,5%,1/16W,DA,TP,1005	RK73K1ETP104J
104	2007-000162	R437	R-CHIP,100Kohm,5%,1/16W,DA,TP,1005	RK73K1ETP104J
105	2007-000162	R460	R-CHIP,100Kohm,5%,1/16W,DA,TP,1005	RK73K1ETP104J
106	2007-000162	R555	R-CHIP,100Kohm,5%,1/16W,DA,TP,1005	RK73K1ETP104J
107	2007-000162	R579	R-CHIP,100Kohm,5%,1/16W,DA,TP,1005	RK73K1ETP104J
108	2007-000162	R583	R-CHIP,100Kohm,5%,1/16W,DA,TP,1005	RK73K1ETP104J
109	2007-000162	R605	R-CHIP,100Kohm,5%,1/16W,DA,TP,1005	RK73K1ETP104J
110	2007-000162	R606	R-CHIP,100Kohm,5%,1/16W,DA,TP,1005	RK73K1ETP104J
111	2007-000168	R440	R-CHIP,470Kohm,5%,1/16W,DA,TP,1005	RK73K1ETP474J
112	2007-000168	R735	R-CHIP,470Kohm,5%,1/16W,DA,TP,1005	RK73K1ETP474J
113	2007-000172	R220	R-CHIP,10ohm,5%,1/16W,DA,TP,1005	RK73K1ETP100J
114	2007-000172	R224	R-CHIP,10ohm,5%,1/16W,DA,TP,1005	RK73K1ETP100J
115	2007-000172	R577	R-CHIP,10ohm,5%,1/16W,DA,TP,1005	RK73K1ETP100J
116	2007-000172	R578	R-CHIP,10ohm,5%,1/16W,DA,TP,1005	RK73K1ETP100J
117	2007-000172	R664	R-CHIP,10ohm,5%,1/16W,DA,TP,1005	RK73K1ETP100J
118	2007-000172	R731	R-CHIP,10ohm,5%,1/16W,DA,TP,1005	RK73K1ETP100J
119	2007-000172	R736	R-CHIP,10ohm,5%,1/16W,DA,TP,1005	RK73K1ETP100J
120	2007-000172	R737	R-CHIP,10ohm,5%,1/16W,DA,TP,1005	RK73K1ETP100J
121	2007-000174	R123	R-CHIP,47ohm,5%,1/16W,DA,TP,1005	RK73K1ETP470J
122	2007-000174	R569	R-CHIP,47ohm,5%,1/16W,DA,TP,1005	RK73K1ETP470J

NO	SEC CODE	Reference	Part Description	Vendor Part No.
123	2007-000242	R582	R-CHIP,1.5Kohm,5%,1/16W,DA,TP,1005	RK73K1ETP152J
124	2007-001119	R726	R-CHIP,680ohm,5%,1/16W,DA,TP,1005	RK73K1ETP681J
125	2007-001244	R105	R-CHIP,91Kohm,5%,1/16W,DA,TP,1005	RK73K1ETP913J
126	2007-001298	R221	R-CHIP,51ohm,5%,1/16W,DA,TP,1005	RK73K1ETP510J
127	2007-001298	R724	R-CHIP,51ohm,5%,1/16W,DA,TP,1005	RK73K1ETP510J
128	2007-001301	R202	R-CHIP,68ohm,5%,1/16W,DA,TP,1005	ERJ2GEJ680X
129	2007-001301	R210	R-CHIP,68ohm,5%,1/16W,DA,TP,1005	ERJ2GEJ680X
130	2007-001305	R211	R-CHIP,120ohm,5%,1/16W,DA,TP,1005	RC1005J121CS
131	2007-001306	R728	R-CHIP,150ohm,5%,1/16W,DA,TP,1005	RK73K1ETP151J
132	2007-001307	R727	R-CHIP,180ohm,5%,1/16W,DA,TP,1005	RK73K1ETP181J
133	2007-001311	R218	R-CHIP,270ohm,5%,1/16W,DA,TP,1005	RK73K1ETP271J
134	2007-002796	R445	R-CHIP,510ohm,5%,1/16W,DA,TP,1005	RK73K1ETP511J
135	2007-002796	R446	R-CHIP,510ohm,5%,1/16W,DA,TP,1005	RK73K1ETP511J
136	2007-002965	R217	R-CHIP,15OHM,5%,1/16W,DA,TP,1005	RK73K1ETP150J
137	2007-007107	R658	R-CHIP,100Kohm,1%,1/16W,DA,TP,1005	RK73H1ETP1003F
138	2007-007317	R452	R-CHIP,2.2Kohm,1%,1/16W,DA,TP,1005	RK73H1ETP2201F
139	2007-007317	R453	R-CHIP,2.2Kohm,1%,1/16W,DA,TP,1005	RK73H1ETP2201F
140	2007-007317	R454	R-CHIP,2.2Kohm,1%,1/16W,DA,TP,1005	RK73H1ETP2201F
141	2007-007317	R455	R-CHIP,2.2Kohm,1%,1/16W,DA,TP,1005	RK73H1ETP2201F
142	2007-007317	R594	R-CHIP,2.2Kohm,1%,1/16W,DA,TP,1005	RK73H1ETP2201F
143	2007-007318	R456	R-CHIP,1Kohm,1%,1/16W,DA,TP,1005	RK73H1ETP1001F
144	2007-007318	R457	R-CHIP,1Kohm,1%,1/16W,DA,TP,1005	RK73H1ETP1001F
145	2007-007318	R458	R-CHIP,1Kohm,1%,1/16W,DA,TP,1005	RK73H1ETP1001F
146	2007-007318	R459	R-CHIP,1Kohm,1%,1/16W,DA,TP,1005	RK73H1ETP1001F
147	2007-007590	R659	R-CHIP,82Kohm,1%,1/16W,DA,TP,1005	RK73H1ETP8202F
148	2007-007771	R319	R-CHIP,0OHM,5%,1/16W,DA,TP,1005	ERJ2GE0R00L
149	2007-007771	R401	R-CHIP,0OHM,5%,1/16W,DA,TP,1005	ERJ2GE0R00L
150	2007-007771	R670	R-CHIP,0OHM,5%,1/16W,DA,TP,1005	ERJ2GE0R00L
151	2007-007771	R671	R-CHIP,0OHM,5%,1/16W,DA,TP,1005	ERJ2GE0R00L
152	2007-007771	R733	R-CHIP,0OHM,5%,1/16W,DA,TP,1005	ERJ2GE0R00L
153	2007-007771	R734	R-CHIP,0OHM,5%,1/16W,DA,TP,1005	ERJ2GE0R00L
154	2007-007771	R739	R-CHIP,0OHM,5%,1/16W,DA,TP,1005	ERJ2GE0R00L
155	2011-001344	R320	R-NETWORK,100ohm,5%,1/16W,L,CHIP,8P,TP	EXB28V101JX
156	2011-001344	R485	R-NETWORK,100ohm,5%,1/16W,L,CHIP,8P,TP	EXB28V101JX
157	2011-001345	R449	R-NETWORK,10Kohm,5%,1/16W,L,CHIP,8P,TP	EXB28V103JX
158	2203-000233	C144	C-CERAMIC,CHIP,0.1nF,5%,50V,NP0,TP,1005	CL05C101JBNC
159	2203-000233	C305	C-CERAMIC,CHIP,0.1nF,5%,50V,NP0,TP,1005	CL05C101JBNC
160	2203-000233	C452	C-CERAMIC,CHIP,0.1nF,5%,50V,NP0,TP,1005	CL05C101JBNC
161	2203-000233	C453	C-CERAMIC,CHIP,0.1nF,5%,50V,NP0,TP,1005	CL05C101JBNC
162	2203-000233	C454	C-CERAMIC,CHIP,0.1nF,5%,50V,NP0,TP,1005	CL05C101JBNC
163	2203-000233	C455	C-CERAMIC,CHIP,0.1nF,5%,50V,NP0,TP,1005	CL05C101JBNC
164	2203-000233	C658	C-CERAMIC,CHIP,0.1nF,5%,50V,NP0,TP,1005	CL05C101JBNC



NO	SEC CODE	Reference	Part Description	Vendor Part No.
165	2203-000233	C718	C-CERAMIC,CHIP,0.1nF,5%,50V,NP0,TP,1005	CL05C101JBNC
166	2203-000233	C719	C-CERAMIC,CHIP,0.1nF,5%,50V,NP0,TP,1005	CL05C101JBNC
167	2203-000254	C101	C-CERAMIC,CHIP,10nF,10%,16V,X7R,TP,1005	CL05B103KONC
168	2203-000254	C102	C-CERAMIC,CHIP,10nF,10%,16V,X7R,TP,1005	CL05B103KONC
169	2203-000254	C123	C-CERAMIC,CHIP,10nF,10%,16V,X7R,TP,1005	CL05B103KONC
170	2203-000254	C210	C-CERAMIC,CHIP,10nF,10%,16V,X7R,TP,1005	CL05B103KONC
171	2203-000254	C238	C-CERAMIC,CHIP,10nF,10%,16V,X7R,TP,1005	CL05B103KONC
172	2203-000254	C307	C-CERAMIC,CHIP,10nF,10%,16V,X7R,TP,1005	CL05B103KONC
173	2203-000254	C309	C-CERAMIC,CHIP,10nF,10%,16V,X7R,TP,1005	CL05B103KONC
174	2203-000254	C313	C-CERAMIC,CHIP,10nF,10%,16V,X7R,TP,1005	CL05B103KONC
175	2203-000254	C319	C-CERAMIC,CHIP,10nF,10%,16V,X7R,TP,1005	CL05B103KONC
176	2203-000254	C326	C-CERAMIC,CHIP,10nF,10%,16V,X7R,TP,1005	CL05B103KONC
177	2203-000254	C331	C-CERAMIC,CHIP,10nF,10%,16V,X7R,TP,1005	CL05B103KONC
178	2203-000254	C335	C-CERAMIC,CHIP,10nF,10%,16V,X7R,TP,1005	CL05B103KONC
179	2203-000254	C354	C-CERAMIC,CHIP,10nF,10%,16V,X7R,TP,1005	CL05B103KONC
180	2203-000254	C434	C-CERAMIC,CHIP,10nF,10%,16V,X7R,TP,1005	CL05B103KONC
181	2203-000254	C440	C-CERAMIC,CHIP,10nF,10%,16V,X7R,TP,1005	CL05B103KONC
182	2203-000254	C449	C-CERAMIC,CHIP,10nF,10%,16V,X7R,TP,1005	CL05B103KONC
183	2203-000254	C536	C-CERAMIC,CHIP,10nF,10%,16V,X7R,TP,1005	CL05B103KONC
184	2203-000254	C587	C-CERAMIC,CHIP,10nF,10%,16V,X7R,TP,1005	CL05B103KONC
185	2203-000254	C712	C-CERAMIC,CHIP,10nF,10%,16V,X7R,TP,1005	CL05B103KONC
186	2203-000254	C725	C-CERAMIC,CHIP,10nF,10%,16V,X7R,TP,1005	CL05B103KONC
187	2203-000254	C726	C-CERAMIC,CHIP,10nF,10%,16V,X7R,TP,1005	CL05B103KONC
188	2203-000254	C744	C-CERAMIC,CHIP,10nF,10%,16V,X7R,TP,1005	CL05B103KONC
189	2203-000254	C745	C-CERAMIC,CHIP,10nF,10%,16V,X7R,TP,1005	CL05B103KONC
190	2203-000278	C206	C-CERAMIC,CHIP,0.01nF,0.5pF,50V,NP0,1005	CL05C100CBNC
191	2203-000278	C239	C-CERAMIC,CHIP,0.01nF,0.5pF,50V,NP0,1005	CL05C100CBNC
192	2203-000359	C212	C-CERAMIC,CHIP,0.15nF,5%,50V,NP0,TP,1005	CL05C151JBNC
193	2203-000386	C235	C-CERAMIC,CHIP,0.015nF,5%,50V,NP0,1005	CL05C150JBNC
194	2203-000438	C138	C-CERAMIC,CHIP,1nF,10%,50V,X7R,TP,1005	CL05B102KBNC
195	2203-000438	C211	C-CERAMIC,CHIP,1nF,10%,50V,X7R,TP,1005	CL05B102KBNC
196	2203-000438	C221	C-CERAMIC,CHIP,1nF,10%,50V,X7R,TP,1005	CL05B102KBNC
197	2203-000438	C227	C-CERAMIC,CHIP,1nF,10%,50V,X7R,TP,1005	CL05B102KBNC
198	2203-000438	C229	C-CERAMIC,CHIP,1nF,10%,50V,X7R,TP,1005	CL05B102KBNC
199	2203-000438	C230	C-CERAMIC,CHIP,1nF,10%,50V,X7R,TP,1005	CL05B102KBNC
200	2203-000438	C240	C-CERAMIC,CHIP,1nF,10%,50V,X7R,TP,1005	CL05B102KBNC
201	2203-000438	C261	C-CERAMIC,CHIP,1nF,10%,50V,X7R,TP,1005	CL05B102KBNC
202	2203-000438	C556	C-CERAMIC,CHIP,1nF,10%,50V,X7R,TP,1005	CL05B102KBNC
203	2203-000438	C557	C-CERAMIC,CHIP,1nF,10%,50V,X7R,TP,1005	CL05B102KBNC
204	2203-000438	C562	C-CERAMIC,CHIP,1nF,10%,50V,X7R,TP,1005	CL05B102KBNC
205	2203-000438	C580	C-CERAMIC,CHIP,1nF,10%,50V,X7R,TP,1005	CL05B102KBNC
206	2203-000466	C575	C-CERAMIC,CHIP,0.001nF,0.25pF,50V,NP0,1005	CL05C010CBNC

NO	SEC CODE	Reference	Part Description	Vendor Part No.
207	2203-000468	C747	C-CERAMIC,CHIP,0.001nF,0.25pF,50V,NP0,1608	CL10C010CBNC
208	2203-000585	C112	C-CERAMIC,CHIP,220pF,10%,50V,X7R,TP,1005	C1005X7R1H221KT
209	2203-000628	C237	C-CERAMIC,CHIP,0.022nF,5%,50V,NP0,TP,1005	CL05C220JBNC
210	2203-000628	C400	C-CERAMIC,CHIP,0.022nF,5%,50V,NP0,TP,1005	CL05C220JBNC
211	2203-000628	C401	C-CERAMIC,CHIP,0.022nF,5%,50V,NP0,TP,1005	CL05C220JBNC
212	2203-000679	C200	C-CERAMIC,CHIP,0.027nF,5%,50V,NP0,TP,1005	CL05C270JBNC
213	2203-000679	C232	C-CERAMIC,CHIP,0.027nF,5%,50V,NP0,TP,1005	CL05C270JBNC
214	2203-000679	C262	C-CERAMIC,CHIP,0.027nF,5%,50V,NP0,TP,1005	CL05C270JBNC
215	2203-000679	C540	C-CERAMIC,CHIP,0.027nF,5%,50V,NP0,TP,1005	CL05C270JBNC
216	2203-000679	C555	C-CERAMIC,CHIP,0.027nF,5%,50V,NP0,TP,1005	CL05C270JBNC
217	2203-000679	C569	C-CERAMIC,CHIP,0.027nF,5%,50V,NP0,TP,1005	CL05C270JBNC
218	2203-000679	C586	C-CERAMIC,CHIP,0.027nF,5%,50V,NP0,TP,1005	CL05C270JBNC
219	2203-000679	C727	C-CERAMIC,CHIP,0.027nF,5%,50V,NP0,TP,1005	CL05C270JBNC
220	2203-000679	C728	C-CERAMIC,CHIP,0.027nF,5%,50V,NP0,TP,1005	CL05C270JBNC
221	2203-000679	C740	C-CERAMIC,CHIP,0.027nF,5%,50V,NP0,TP,1005	CL05C270JBNC
222	2203-000679	C741	C-CERAMIC,CHIP,0.027nF,5%,50V,NP0,TP,1005	CL05C270JBNC
223	2203-000696	C582	C-CERAMIC,CHIP,0.002nF,0.25pF,50V,NP0,1005	CL05C020CBNC
224	2203-000812	C143	C-CERAMIC,CHIP,0.033nF,5%,50V,NP0,TP,1005	CL05C330JBNC
225	2203-000812	C204	C-CERAMIC,CHIP,0.033nF,5%,50V,NP0,TP,1005	CL05C330JBNC
226	2203-000812	C217	C-CERAMIC,CHIP,0.033nF,5%,50V,NP0,TP,1005	CL05C330JBNC
227	2203-000812	C234	C-CERAMIC,CHIP,0.033nF,5%,50V,NP0,TP,1005	CL05C330JBNC
228	2203-000812	C263	C-CERAMIC,CHIP,0.033nF,5%,50V,NP0,TP,1005	CL05C330JBNC
229	2203-000812	C264	C-CERAMIC,CHIP,0.033nF,5%,50V,NP0,TP,1005	CL05C330JBNC
230	2203-000812	C310	C-CERAMIC,CHIP,0.033nF,5%,50V,NP0,TP,1005	CL05C330JBNC
231	2203-000812	C311	C-CERAMIC,CHIP,0.033nF,5%,50V,NP0,TP,1005	CL05C330JBNC
232	2203-000812	C312	C-CERAMIC,CHIP,0.033nF,5%,50V,NP0,TP,1005	CL05C330JBNC
233	2203-000812	C327	C-CERAMIC,CHIP,0.033nF,5%,50V,NP0,TP,1005	CL05C330JBNC
234	2203-000812	C330	C-CERAMIC,CHIP,0.033nF,5%,50V,NP0,TP,1005	CL05C330JBNC
235	2203-000812	C437	C-CERAMIC,CHIP,0.033nF,5%,50V,NP0,TP,1005	CL05C330JBNC
236	2203-000812	C438	C-CERAMIC,CHIP,0.033nF,5%,50V,NP0,TP,1005	CL05C330JBNC
237	2203-000812	C439	C-CERAMIC,CHIP,0.033nF,5%,50V,NP0,TP,1005	CL05C330JBNC
238	2203-000812	C441	C-CERAMIC,CHIP,0.033nF,5%,50V,NP0,TP,1005	CL05C330JBNC
239	2203-000812	C442	C-CERAMIC,CHIP,0.033nF,5%,50V,NP0,TP,1005	CL05C330JBNC
240	2203-000812	C443	C-CERAMIC,CHIP,0.033nF,5%,50V,NP0,TP,1005	CL05C330JBNC
241	2203-000812	C448	C-CERAMIC,CHIP,0.033nF,5%,50V,NP0,TP,1005	CL05C330JBNC
242	2203-000812	C460	C-CERAMIC,CHIP,0.033nF,5%,50V,NP0,TP,1005	CL05C330JBNC
243	2203-000812	C758	C-CERAMIC,CHIP,0.033nF,5%,50V,NP0,TP,1005	CL05C330JBNC
244	2203-000854	C244	C-CERAMIC,CHIP,0.039nF,5%,50V,NP0,TP,1005	CL05C390JBNC
245	2203-000854	C698	C-CERAMIC,CHIP,0.039nF,5%,50V,NP0,TP,1005	CL05C390JBNC
246	2203-000854	C699	C-CERAMIC,CHIP,0.039nF,5%,50V,NP0,TP,1005	CL05C390JBNC
247	2203-000870	C213	C-CERAMIC,CHIP,0.003nF,0.25pF,50V,NP0,1005	CL05C030CBNC
248	2203-001020	C538	C-CERAMIC,CHIP,0.004nF,0.25pF,50V,NP0,1608	CM105CG4R0C50AT

NO	SEC CODE	Reference	Part Description	Vendor Part No.
249	2203-001153	C215	C-CERAMIC,CHIP,0.068nF,5%,50V,NP0,TP,1005	CL05C680JBNC
250	2203-001153	C494	C-CERAMIC,CHIP,0.068nF,5%,50V,NP0,TP,1005	CL05C680JBNC
251	2203-002525	C126	C-CERAMIC,CHIP,0.56nF,10%,50V,X7R,TP,1005	C1005X7R1H561KT
252	2203-002525	C137	C-CERAMIC,CHIP,0.56nF,10%,50V,X7R,TP,1005	C1005X7R1H561KT
253	2203-002525	C481	C-CERAMIC,CHIP,0.56nF,10%,50V,X7R,TP,1005	C1005X7R1H561KT
254	2203-002668	C214	C-CERAMIC,CHIP,0.0005nF,0.1pF,50V,1005	CL05C0R5BBNC
255	2203-003054	C329	C-CERAMIC,CHIP,0.009nF,0.25pF,50V,1005	C1005C0G1H090CT
256	2203-003054	C444	C-CERAMIC,CHIP,0.009nF,0.25pF,50V,1005	C1005C0G1H090CT
257	2203-003054	C445	C-CERAMIC,CHIP,0.009nF,0.25pF,50V,1005	C1005C0G1H090CT
258	2203-003054	C539	C-CERAMIC,CHIP,0.009nF,0.25pF,50V,1005	C1005C0G1H090CT
259	2203-003054	C757	C-CERAMIC,CHIP,0.009nF,0.25pF,50V,1005	C1005C0G1H090CT
260	2203-005050	C600	C-CERAMIC,CHIP,0.0018nF,0.25pF,50V,1005	CL05C1R8CBNC
261	2203-005061	C106	C-CERAMIC,CHIP,100nF,+80-20%,16V,1005	C1005Y5V1C104ZT
262	2203-005061	C107	C-CERAMIC,CHIP,100nF,+80-20%,16V,1005	C1005Y5V1C104ZT
263	2203-005061	C110	C-CERAMIC,CHIP,100nF,+80-20%,16V,1005	C1005Y5V1C104ZT
264	2203-005061	C111	C-CERAMIC,CHIP,100nF,+80-20%,16V,1005	C1005Y5V1C104ZT
265	2203-005061	C114	C-CERAMIC,CHIP,100nF,+80-20%,16V,1005	C1005Y5V1C104ZT
266	2203-005061	C301	C-CERAMIC,CHIP,100nF,+80-20%,16V,1005	C1005Y5V1C104ZT
267	2203-005061	C332	C-CERAMIC,CHIP,100nF,+80-20%,16V,1005	C1005Y5V1C104ZT
268	2203-005061	C409	C-CERAMIC,CHIP,100nF,+80-20%,16V,1005	C1005Y5V1C104ZT
269	2203-005061	C427	C-CERAMIC,CHIP,100nF,+80-20%,16V,1005	C1005Y5V1C104ZT
270	2203-005061	C534	C-CERAMIC,CHIP,100nF,+80-20%,16V,1005	C1005Y5V1C104ZT
271	2203-005061	C588	C-CERAMIC,CHIP,100nF,+80-20%,16V,1005	C1005Y5V1C104ZT
272	2203-005061	C597	C-CERAMIC,CHIP,100nF,+80-20%,16V,1005	C1005Y5V1C104ZT
273	2203-005061	C701	C-CERAMIC,CHIP,100nF,+80-20%,16V,1005	C1005Y5V1C104ZT
274	2203-005061	C706	C-CERAMIC,CHIP,100nF,+80-20%,16V,1005	C1005Y5V1C104ZT
275	2203-005061	C711	C-CERAMIC,CHIP,100nF,+80-20%,16V,1005	C1005Y5V1C104ZT
276	2203-005065	C108	C-CERAMIC,CHIP,1000nF,+80-20%,10V,1608	GRM39Y5V105Z10PT
277	2203-005065	C125	C-CERAMIC,CHIP,1000nF,+80-20%,10V,1608	GRM39Y5V105Z10PT
278	2203-005065	C318	C-CERAMIC,CHIP,1000nF,+80-20%,10V,1608	GRM39Y5V105Z10PT
279	2203-005065	C403	C-CERAMIC,CHIP,1000nF,+80-20%,10V,1608	GRM39Y5V105Z10PT
280	2203-005065	C431	C-CERAMIC,CHIP,1000nF,+80-20%,10V,1608	GRM39Y5V105Z10PT
281	2203-005065	C545	C-CERAMIC,CHIP,1000nF,+80-20%,10V,1608	GRM39Y5V105Z10PT
282	2203-005065	C705	C-CERAMIC,CHIP,1000nF,+80-20%,10V,1608	GRM39Y5V105Z10PT
283	2203-005065	C748	C-CERAMIC,CHIP,1000nF,+80-20%,10V,1608	GRM39Y5V105Z10PT
284	2203-005065	C749	C-CERAMIC,CHIP,1000nF,+80-20%,10V,1608	GRM39Y5V105Z10PT
285	2203-005234	C596	C-CERAMIC,CHIP,0.0012nF,0.25pF,50V,1005	CL05C1R2CBNC
286	2203-005382	C248	C-CERAMIC,CHIP,0.006nF,0.1pF,50V,1005	C1005C0G1H060BT
287	2203-005383	C752	C-CERAMIC,CHIP,7pF,0.1pF,50V,NPO,TP,1005	C1005C0G1H070BT
288	2203-005383	C753	C-CERAMIC,CHIP,7pF,0.1pF,50V,NPO,TP,1005	C1005C0G1H070BT
289	2203-005383	C754	C-CERAMIC,CHIP,7pF,0.1pF,50V,NPO,TP,1005	C1005C0G1H070BT
290	2203-005383	C755	C-CERAMIC,CHIP,7pF,0.1pF,50V,NPO,TP,1005	C1005C0G1H070BT

NO	SEC CODE	Reference	Part Description	Vendor Part No.
291	2203-005446	C721	C-CERAMIC,CHIP,0.0027nF,0.1pF,50V,1005	C1005C0G1H2R7BT
292	2203-005480	C450	C-CERAMIC,CHIP,33nF,10%,10V,X7R,TP,1005	C1005X7R1C333KT
293	2203-005480	C451	C-CERAMIC,CHIP,33nF,10%,10V,X7R,TP,1005	C1005X7R1C333KT
294	2203-005481	C459	C-CERAMIC,CHIP,47nF,10%,10V,X7R,TP,1005	C1005X7R1A473KT
295	2203-005482	C746	C-CERAMIC,CHIP,100nF,10%,10V,X5R,TP,1005	GRM36X5R104K10PT
296	2203-005482	C751	C-CERAMIC,CHIP,100nF,10%,10V,X5R,TP,1005	GRM36X5R104K10PT
297	2203-005503	C456	C-CERAMIC,CHIP,0.18nF,5%,25V,NP0,TP,1005	C1005CH1E181J
298	2203-005503	C457	C-CERAMIC,CHIP,0.18nF,5%,25V,NP0,TP,1005	C1005CH1E181J
299	2203-005552	C727	C-CERAMIC,CHIP,0.0022nF,0.1pF,50V,NP0,1005	C1005C0G1H2R2BT
300	2301-001197	C202	C-FILM,CHIP,0.39nF,5%,50V,TP,2x1.25x0.8mm	ECHU1H391JX5
301	2301-001213	C203	C-FILM,CHIP,6.8nF,5%,16V,TP,2012	ECHU1C682JX5
302	2404-001020	C710	C-TA,CHIP,10uF,20%,10V,GP,TP,3216	TAJA106M010R
303	2404-001083	C249	C-TA,CHIP,220uF,20%,6.3V,LZ,TP,7132	F750J227MCCGZT
304	2404-001101	C220	C-TA,CHIP,1uF,20%,16V,GP,TP,2012	TAJR105M016R
305	2404-001105	C105	C-TA,CHIP,10UF,20%,6.3V,GP,TP,2012	ECST0JZ106R
306	2404-001105	C117	C-TA,CHIP,10UF,20%,6.3V,GP,TP,2012	ECST0JZ106R
307	2404-001105	C124	C-TA,CHIP,10UF,20%,6.3V,GP,TP,2012	ECST0JZ106R
308	2404-001105	C145	C-TA,CHIP,10UF,20%,6.3V,GP,TP,2012	ECST0JZ106R
309	2404-001105	C306	C-TA,CHIP,10UF,20%,6.3V,GP,TP,2012	ECST0JZ106R
310	2404-001105	C328	C-TA,CHIP,10UF,20%,6.3V,GP,TP,2012	ECST0JZ106R
311	2404-001105	C535	C-TA,CHIP,10UF,20%,6.3V,GP,TP,2012	ECST0JZ106R
312	2404-001105	C708	C-TA,CHIP,10UF,20%,6.3V,GP,TP,2012	ECST0JZ106R
313	2404-001105	C750	C-TA,CHIP,10UF,20%,6.3V,GP,TP,2012	ECST0JZ106R
314	2404-001134	C436	C-TA,CHIP,100UF,20%,6.3V,LZ,TP,4028	595D107X06R3B2T
315	2404-001134	C579	C-TA,CHIP,100UF,20%,6.3V,LZ,TP,4028	595D107X06R3B2T
316	2404-001162	C446	C-TA,CHIP,47uF,20%,4V,LZ,TP,3216	F950G476MAAJZTQ2
317	2703-001178	L594	INDUCTOR-SMD,3.3nH,0.3nH,1x0.5x0.5mm	HK1005-3N3S-T
318	2703-001180	L211	INDUCTOR-SMD,15nH,5%,1x0.5x0.5mm	LL1005-FH15NJ
319	2703-001257	L599	INDUCTOR-SMD,3.9nH,0.3nH,1.6x0.8X0.8mm	HK1608-3N9S-T
320	2703-001293	L200	INDUCTOR-SMD,82nH,5%,1.6x0.8x0.8mm	HK1608-82NJ-T
321	2703-001514	L201	INDUCTOR-SMD,68nH,5%,1.8x1.12x1.02mm	0603CS-68NXJBC
322	2703-001545	L212	INDUCTOR-SMD,47nH,5%,1.8x1.12x1.02mm	0603CS-47NXJBC
323	2703-001545	L213	INDUCTOR-SMD,47nH,5%,1.8x1.12x1.02mm	0603CS-47NXJBC
324	2703-001708	L406	INDUCTOR-SMD,5.6nH,10%,1.0x0.5x0.5mm	HK1005-5N6K-T
325	2703-001735	L596	INDUCTOR-SMD,3.9nH,10%,1x0.5x0.5mm	HK1005-3N9K-T
326	2703-001750	L402	INDUCTOR-SMD,2.2NH,0.3NH,1X0.5X0.5MM	LL1005-FH2N2S
327	2703-001752	L601	INDUCTOR-SMD,39nH,5%,1.0x0.5x0.5mm	LL1005-FH39NJ
328	2703-001786	L404	INDUCTOR-SMD,10NH,5%,1.0X0.5X0.5MM	LL1005-FH10NJ
329	2703-001943	L600	INDUCTOR-SMD,10nH,5%,1.0x0.5x0.5mm	HK1005-10NJ-T
330	2703-001949	L595	INDUCTOR-SMD,4.7nH,10%,1.0x0.5x0.5mm	HK1005-4N7K-T
331	2703-001950	L204	INDUCTOR-SMD,12nH,10%,1.0x0.5x0.5mm	HK1005-12NK-T
332	2703-001952	L209	INDUCTOR-SMD,8.2nH,5%,1.0x0.5x0.5mm	HK1005-8N2J-T

NO	SEC CODE	Reference	Part Description	Vendor Part No.
333	2703-001952	L597	INDUCTOR-SMD,8.2nH,5%,1.0x0.5x0.5mm	HK1005-8N2J-T
334	2703-001953	L218	INDUCTOR-SMD,6.8nH,5%,1.0x0.5x0.5mm	HK1005-6N8J-T
335	2801-003856	X1	CRYSTAL-SMD,0.032786MHz,20ppm	MC-146(32.768KHZ,20P
336	2806-001239	U200	OSCILLATOR-VCO,1748MHz,-,50ohm,TP,2.8V	VOF1748C28KRF
337	2809-001237	U100	OSCILLATOR-VCTCXO,13MHz,5ppm,10Kohm	KT16-KEU30L-13.000M-T
338	2901-001116	E200	FILTER-EMI SMD,50V,0.3A,-,470pF	NFM2012R13C471R
339	2904-001235	F203	FILTER-SAW,1.8425GHz,75MHz,+,-37.5MHz	FAR-G6CH-1G8425-L218
340	2904-001300	F204	FILTER-SAW,1.8425GHZ,75MHZ,1805-1880MHZ	FAR-G6CH-1G8425-L227B
341	2904-001302	F200	FILTER-SAW,225MHZ,0.16MHZ,0.7MS,TP	B4846
342	2909-001146	U203	FILTER-DUPLEXER,942.5MHZ,897.5MHZ	LMG002S-5008C
343	3705-001226	CN1	CONNECTOR-COAXIAL,JACK,75mohm,50ohm	MHC-188
344	3709-001088	J402	CONNECTOR-CARD EDGE,6P,2.54mm	2-338063-2
345	3710-001105	M1	CONNECTOR-SOCKET	24-8005-002-100-867
346	3710-001595	J403	IF CONNECTOR;18P,1R,0.5mm	1004-0018-304
347	3722-001587	U400	JACK-PHONE,6P,2.6PI,AG,BLK	02-828DO-53BKA
348	4302-001119	BAT1	BATTERY-LI(2ND),3V,0.1MAH	RB414II06N
349	4709-001144	U318	COUPLER-DIRECTION,897.5/1747.5MHZ	LDC21897M19D-078
349	N.C POINT	C201	N.C POINT	
350	N.C POINT	C242	N.C POINT	
351	N.C POINT	C304	N.C POINT	
352	N.C POINT	C413	N.C POINT	
353	N.C POINT	C704	N.C POINT	
354	N.C POINT	C714	N.C POINT	
355	N.C POINT	C717	N.C POINT	
356	N.C POINT	C728	N.C POINT	
357	N.C POINT	C743	N.C POINT	
358	N.C POINT	R436	N.C POINT	
359	N.C POINT	R448	N.C POINT	

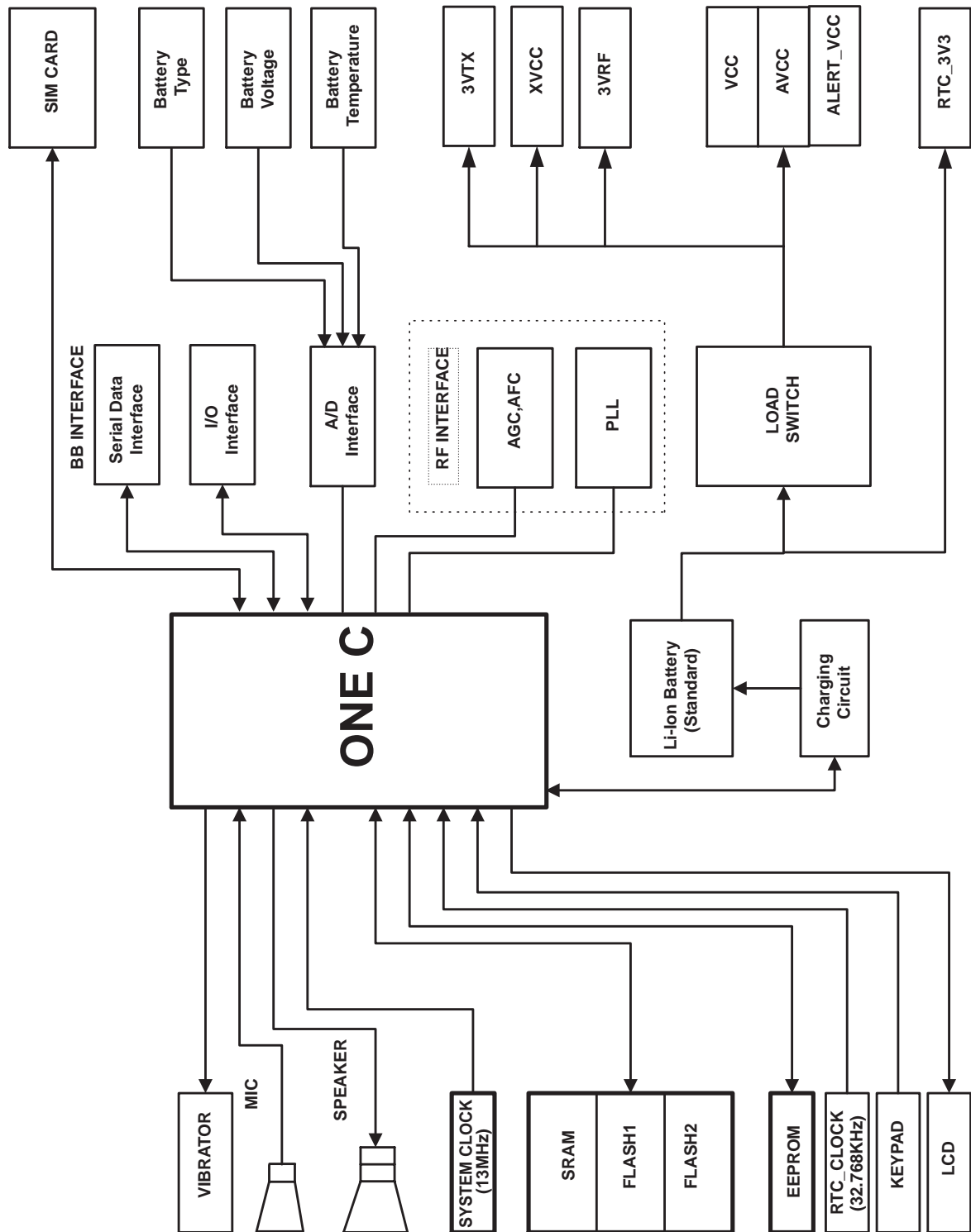
### 3-2 Main Parts List Bottom

NO	SEC CODE	Reference	Part Description	Vendor Part No.
1	0407-001002	D302	DIODE-ARRAY,DAN222,80V,300mA,CA2-3,EM3	DAN222
2	0501-002011	Q300	TR-SMALL SIGNAL,2SD2114K,NPN,200mW,SOT-23	2SD2114KT146V
3	0504-001012	U209	TR-DIGITAL,DTC114YE,NPN,150MW,10K/47K	DTC114YE
4	0504-001058	U204	TR-DIGITAL,RN4985,NPN/PNP,200mW,2.2Kohm	RN4985
5	0504-001058	U492	TR-DIGITAL,RN4985,NPN/PNP,200mW,2.2Kohm	RN4985
6	0504-001058	U493	TR-DIGITAL,RN4985,NPN/PNP,200mW,2.2Kohm	RN4985
7	0601-001402	LED1	LED,CHIP,RED/Y-GRN,1.2x1.5mm,660/570nm	CL165HR/YG-D-T
8	0601-001547	LED2	LED,CHIP,BLUE,1.1X0.8MM,485NM	SLSNNBL102TS
9	0601-001584	D433	LED,CHIP,BLUE,1.2X0.8MM,480NM	SLSNNBF102TS
10	0601-001584	D434	LED,CHIP,BLUE,1.2X0.8MM,480NM	SLSNNBF102TS
11	0601-001584	D427	LED,CHIP,BLUE,1.2X0.8MM,480NM	SLSNNBF102TS
12	0601-001584	D428	LED,CHIP,BLUE,1.2X0.8MM,480NM	SLSNNBF102TS
13	0601-001584	D429	LED,CHIP,BLUE,1.2X0.8MM,480NM	SLSNNBF102TS
14	0601-001584	D430	LED,CHIP,BLUE,1.2X0.8MM,480NM	SLSNNBF102TS
15	0601-001584	D431	LED,CHIP,BLUE,1.2X0.8MM,480NM	SLSNNBF102TS
16	0601-001584	D432	LED,CHIP,BLUE,1.2X0.8MM,480NM	SLSNNBF102TS
17	1209-001379	U611	IC-ETC, LINEAR,16P,3.4V,240MW	HD155173ANPEL
18	1405-001093	D411	VARIATOR,14V,20A,1x0.5x0.6mm	VC040214X500R
19	1405-001093	D415	VARIATOR,14V,20A,1x0.5x0.6mm	VC040214X500R
20	2007-000139	R725	R-CHIP,220ohm,5%,1/16W,DA,TP,1005	RK73K1ETP221J
21	2007-000139	R573	R-CHIP,220ohm,5%,1/16W,DA,TP,1005	RK73K1ETP221J
22	2007-000139	R572	R-CHIP,220ohm,5%,1/16W,DA,TP,1005	RK73K1ETP221J
23	2007-000139	R574	R-CHIP,220ohm,5%,1/16W,DA,TP,1005	RK73K1ETP221J
24	2007-000143	R305	R-CHIP,4.7Kohm,5%,1/16W,DA,TP,1005	RK73K1ETP472J
25	2007-000148	R238	R-CHIP,10Kohm,5%,1/16W,DA,TP,1005	RK73K1ETP103J
26	2007-000148	R240	R-CHIP,10Kohm,5%,1/16W,DA,TP,1005	RK73K1ETP103J
27	2007-000148	R241	R-CHIP,10Kohm,5%,1/16W,DA,TP,1005	RK73K1ETP103J
28	2007-000148	R424	R-CHIP,10Kohm,5%,1/16W,DA,TP,1005	RK73K1ETP103J
29	2007-000148	R427	R-CHIP,10Kohm,5%,1/16W,DA,TP,1005	RK73K1ETP103J
30	2007-000148	R651	R-CHIP,10Kohm,5%,1/16W,DA,TP,1005	RK73K1ETP103J
31	2007-000162	R304	R-CHIP,100Kohm,5%,1/16W,DA,TP,1005	RK73K1ETP104J
32	2007-000162	R422	R-CHIP,100Kohm,5%,1/16W,DA,TP,1005	RK73K1ETP104J
33	2007-000162	R423	R-CHIP,100Kohm,5%,1/16W,DA,TP,1005	RK73K1ETP104J
34	2007-000982	R624	R-CHIP,5.6Kohm,5%,1/16W,DA,TP,1005	RK73K1ETP562J
35	2007-001301	R665	R-CHIP,68ohm,5%,1/16W,DA,TP,1005	ERJ2GEJ680X
36	2007-001301	R666	R-CHIP,68ohm,5%,1/16W,DA,TP,1005	ERJ2GEJ680X
37	2007-001306	R667	R-CHIP,150ohm,5%,1/16W,DA,TP,1005	RK73K1ETP151J
38	2007-007142	R617	R-CHIP,10Kohm,1%,1/16W,DA,TP,1005	RK73H1ETP1002F
39	2007-007142	R618	R-CHIP,10Kohm,1%,1/16W,DA,TP,1005	RK73H1ETP1002F
40	2007-007311	R626	R-CHIP,22Kohm,1%,1/16W,DA,TP,1005	RK73H1ETP2202F
41	2007-007771	R729	R-CHIP,0OHM,5%,1/16W,DA,TP,1005	ERJ2GE0R00L
42	2203-000654	C655	C-CERAMIC,CHIP,270pF,10%,50V,X7R,TP,1005	C1005X7R1H271KT

NO	SEC CODE	Reference	Part Description	Vendor Part No.
43	2203-000654	C585	C-CERAMIC,CHIP,270pF,10%,50V,X7R,TP,1005	C1005X7R1H271KT
44	2203-000438	C720	C-CERAMIC,CHIP,1nF,10%,50V,X7R,TP,1005	CL05B102KBNC
45	2203-000995	C713	C-CERAMIC,CHIP,0.047nF,5%,50V,NP0,TP,1005	CL05C470JBNC
46	2203-000812	C664	C-CERAMIC,CHIP,0.033nF,5%,50V,NP0,TP,1005	CL05C330JBNC
47	2203-000311	C657	C-CERAMIC,CHIP,0.12nF,5%,50V,NP0,TP,1005	CL05C121JANC
48	2203-000233	C658	C-CERAMIC,CHIP,0.1nF,5%,50V,NP0,TP,1005	CL05C101JBNC
49	2203-000679	C665	C-CERAMIC,CHIP,0.027nF,5%,50V,NP0,TP,1005	CL05C270JBNC
50	2203-000438	C270	C-CERAMIC,CHIP,1nF,10%,50V,X7R,TP,1005	CL05B102KBNC
51	2203-000679	C267	C-CERAMIC,CHIP,0.027nF,5%,50V,NP0,TP,1005	CL05C270JBNC
52	2203-000679	C269	C-CERAMIC,CHIP,0.027nF,5%,50V,NP0,TP,1005	CL05C270JBNC
53	2203-005061	C308	C-CERAMIC,CHIP,100nF,+80-20%,16V,1005	C1005Y5V1C104ZT
54	2203-005061	C418	C-CERAMIC,CHIP,100nF,+80-20%,16V,1005	C1005Y5V1C104ZT
55	2203-005061	C419	C-CERAMIC,CHIP,100nF,+80-20%,16V,1005	C1005Y5V1C104ZT
56	2203-005061	C420	C-CERAMIC,CHIP,100nF,+80-20%,16V,1005	C1005Y5V1C104ZT
57	2203-005061	C421	C-CERAMIC,CHIP,100nF,+80-20%,16V,1005	C1005Y5V1C104ZT
58	2203-005065	C411	C-CERAMIC,CHIP,1000nF,+80-20%,10V,1608	GRM39Y5V105Z10PT
59	2203-005065	C412	C-CERAMIC,CHIP,1000nF,+80-20%,10V,1608	GRM39Y5V105Z10PT
60	2203-005065	C415	C-CERAMIC,CHIP,1000nF,+80-20%,10V,1608	GRM39Y5V105Z10PT
61	2203-005065	C417	C-CERAMIC,CHIP,1000nF,+80-20%,10V,1608	GRM39Y5V105Z10PT
62	2203-005065	C422	C-CERAMIC,CHIP,1000nF,+80-20%,10V,1608	GRM39Y5V105Z10PT
63	2203-005065	C490	C-CERAMIC,CHIP,1000nF,+80-20%,10V,1608	GRM39Y5V105Z10PT
64	2203-005444	C404	C-CERAMIC,CHIP,0.003nF,0.1pF,50V,NP0,1005	C1005C0G1H030BT
65	2703-001723	L408	INDUCTOR-SMD,33nH,5%,1.0x0.5x0.5mm	HK1005-33NJ-T
66	2703-001723	L409	INDUCTOR-SMD,33nH,5%,1.0x0.5x0.5mm	HK1005-33NJ-T
67	3002-001098	BUZ300	BUZZER-MAGNETIC,94dB,3V,150mA,2700Hz	BRT-03S
68	N.C	R730	N.C POINT	
69	N.C	C715	N.C POINT	

## 4. Block Diagrams

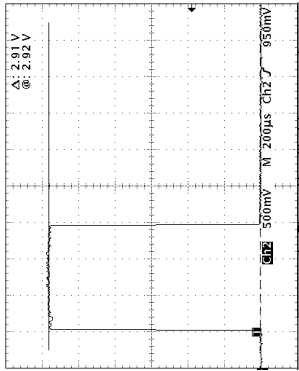
### 4-1 Main Baseband



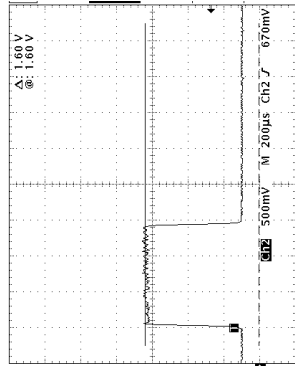




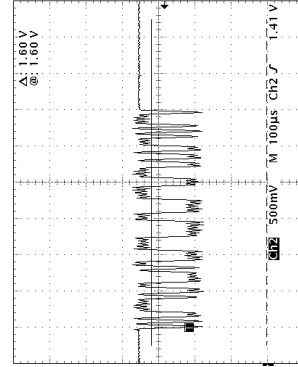
# 4-2-1 RF Transmit Part



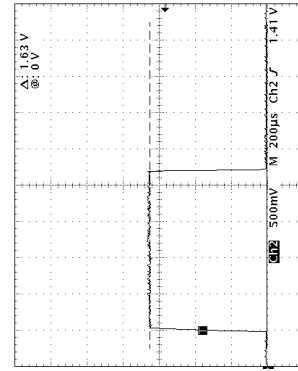
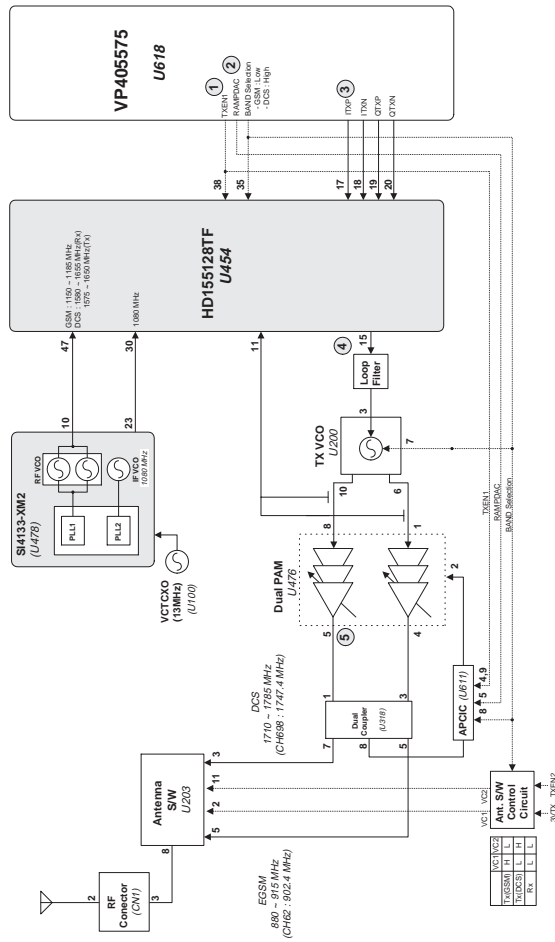
①



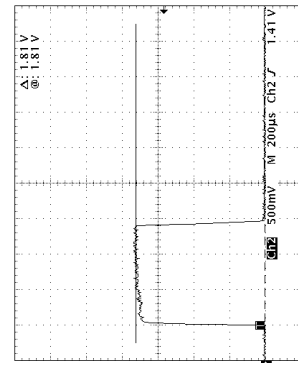
②



③

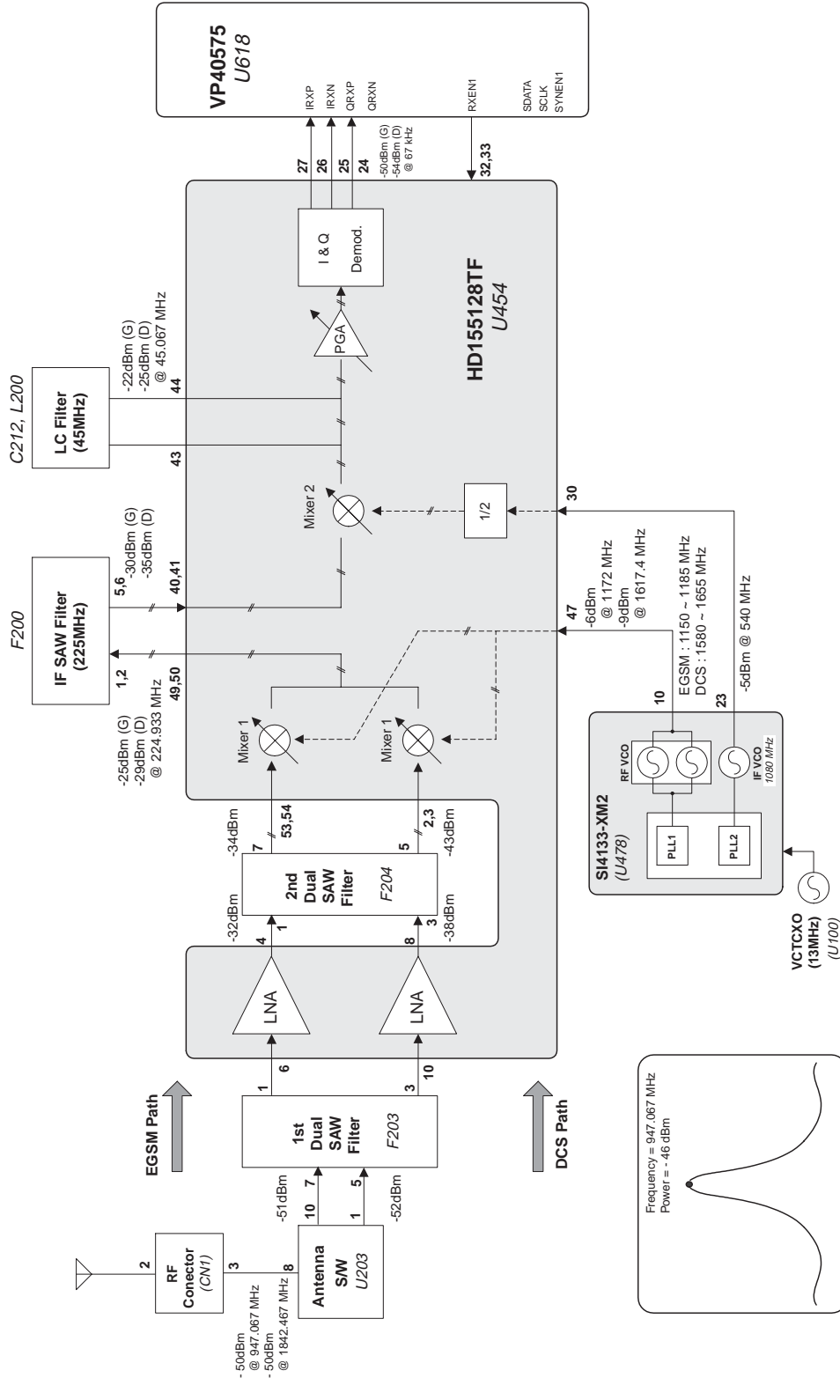


④



⑤

## 4-2-2 RF Receive Part



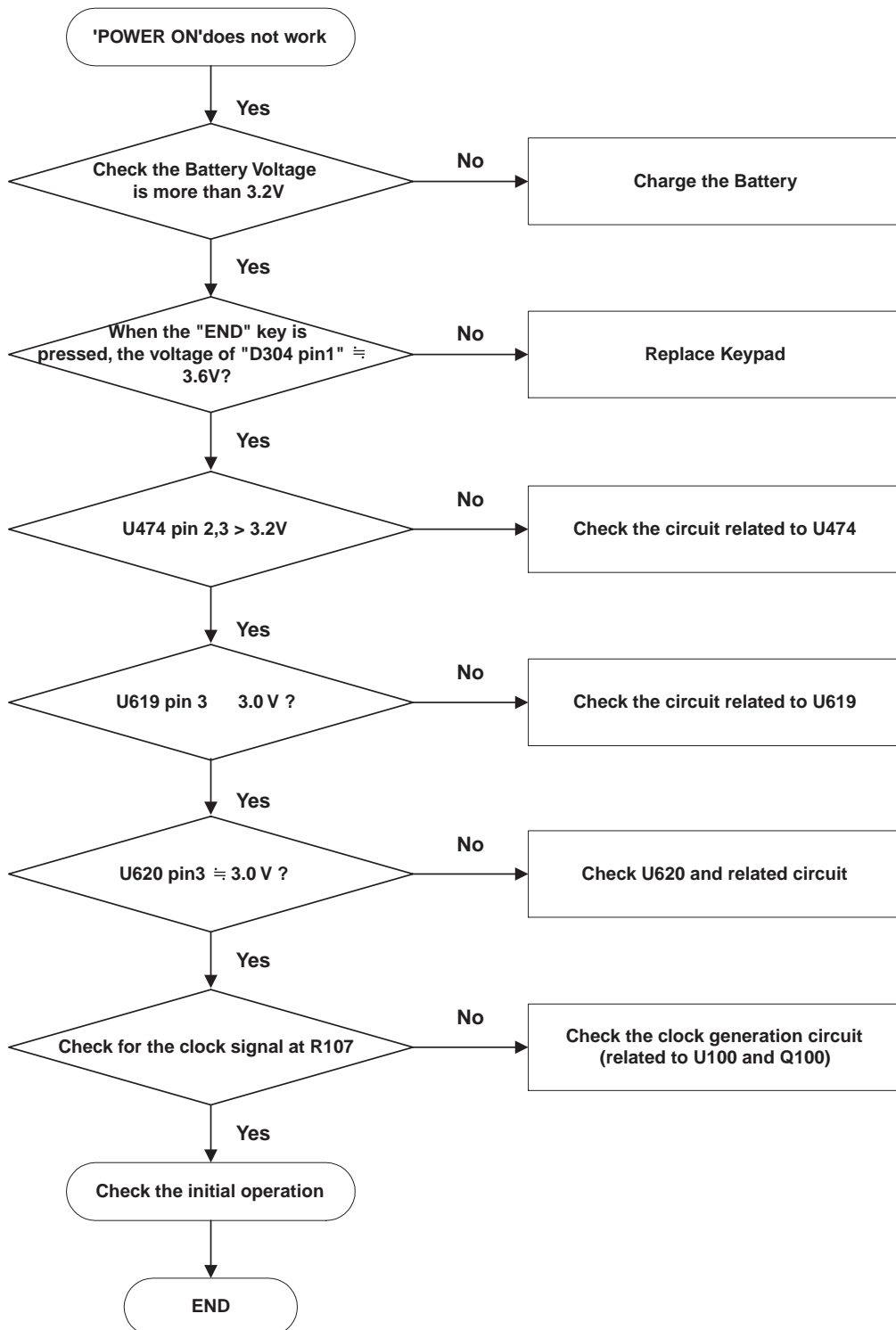
---

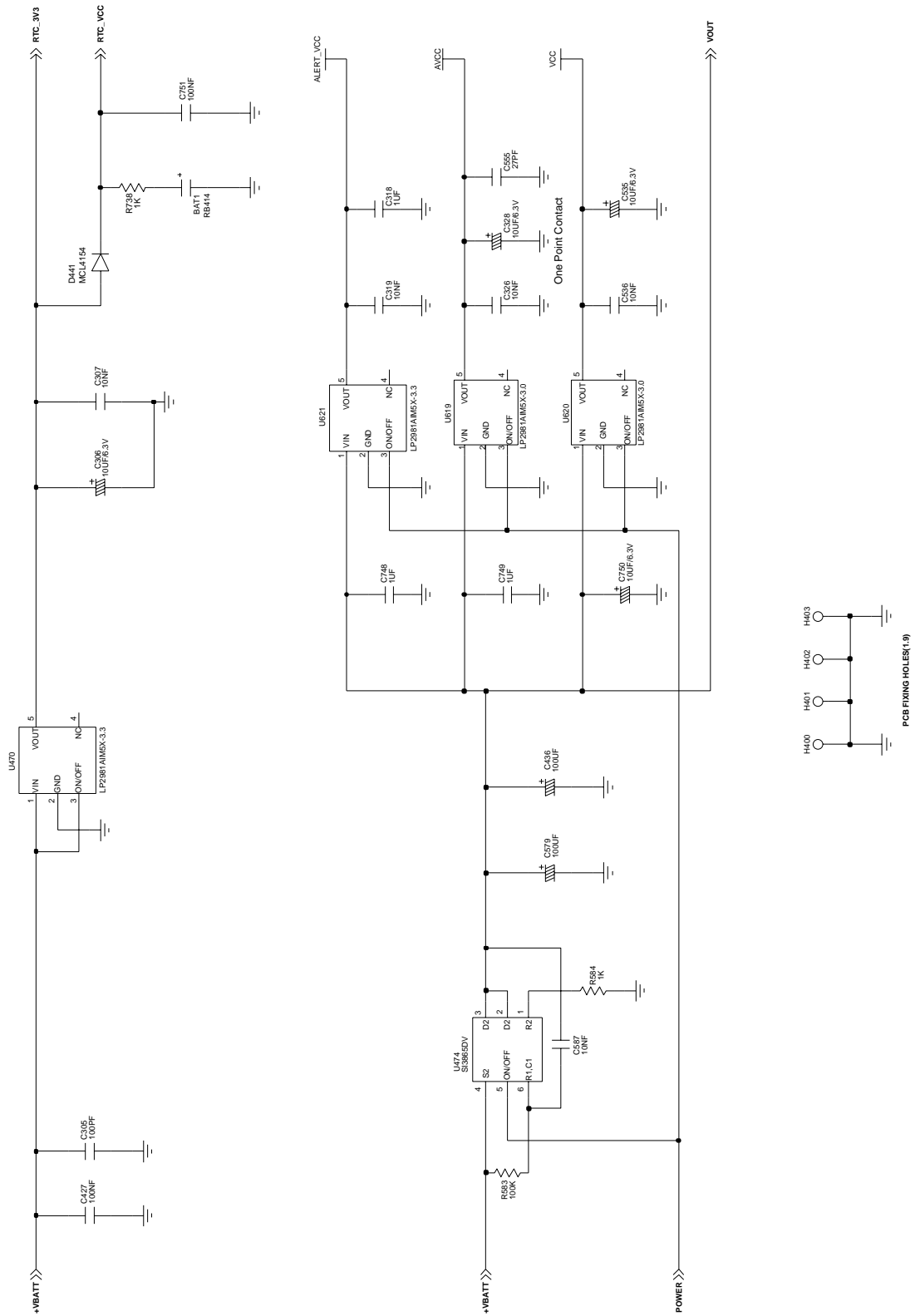
## 5. Flow Chart of Troubleshooting and Circuit Diagrams

---

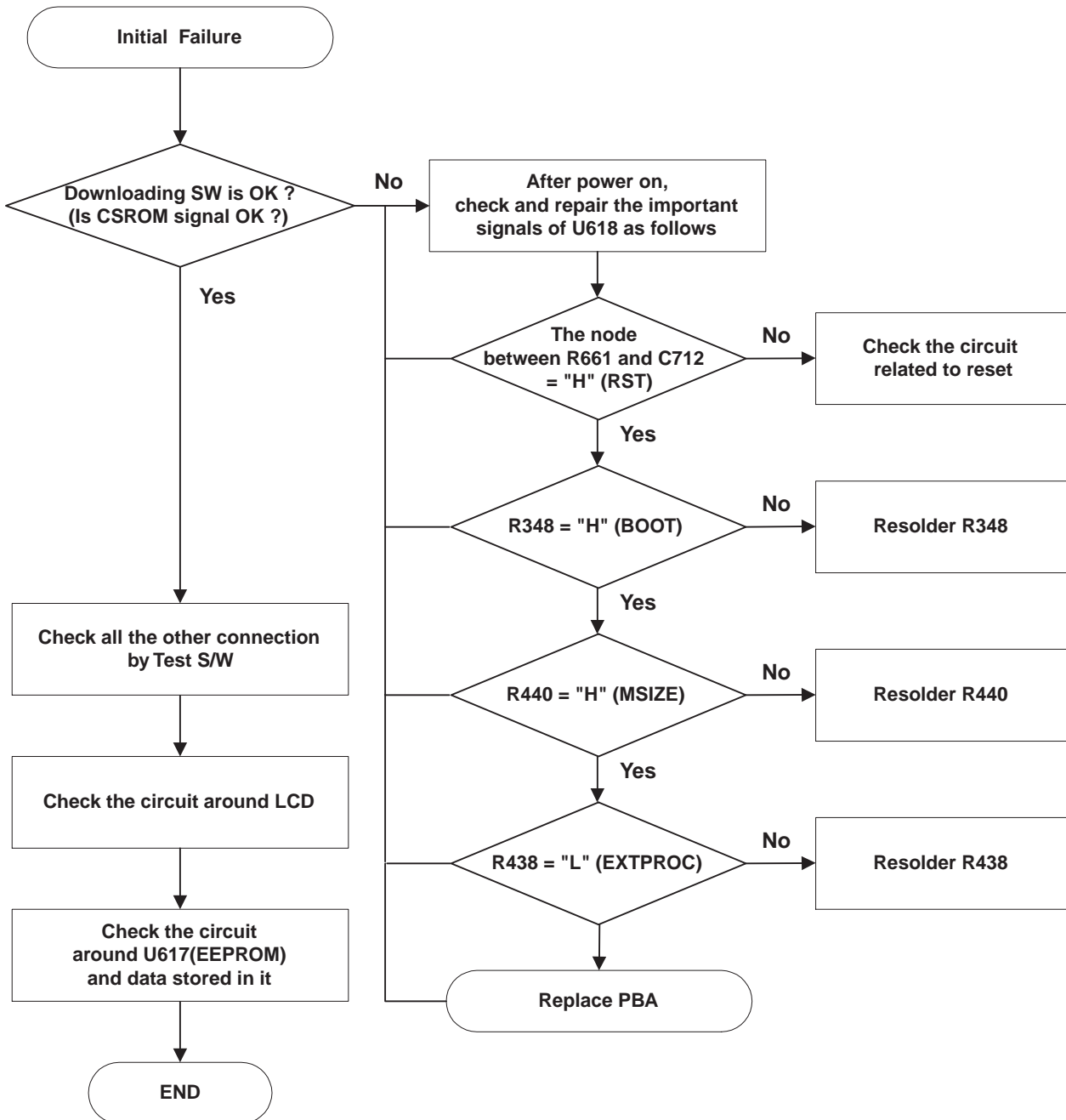
### 5-1 Power ON

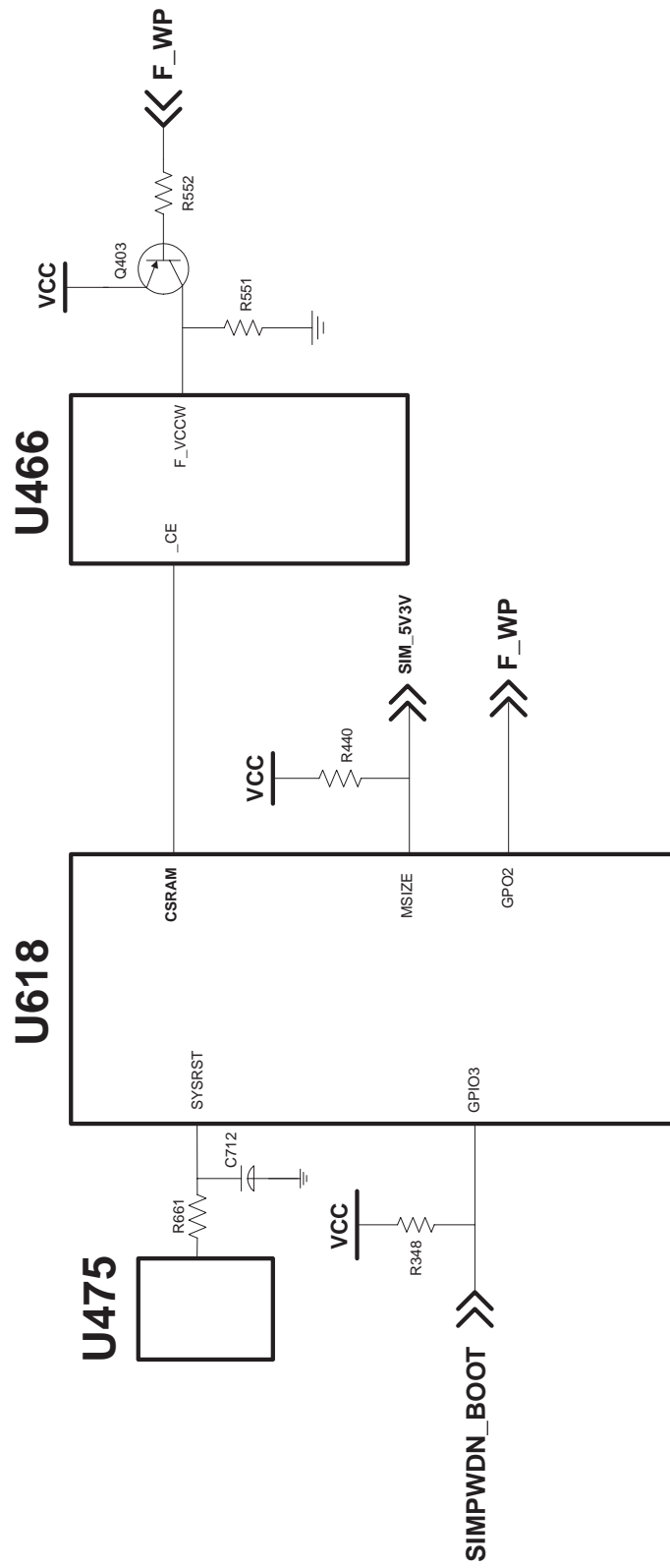
---





## 5-2 Initial

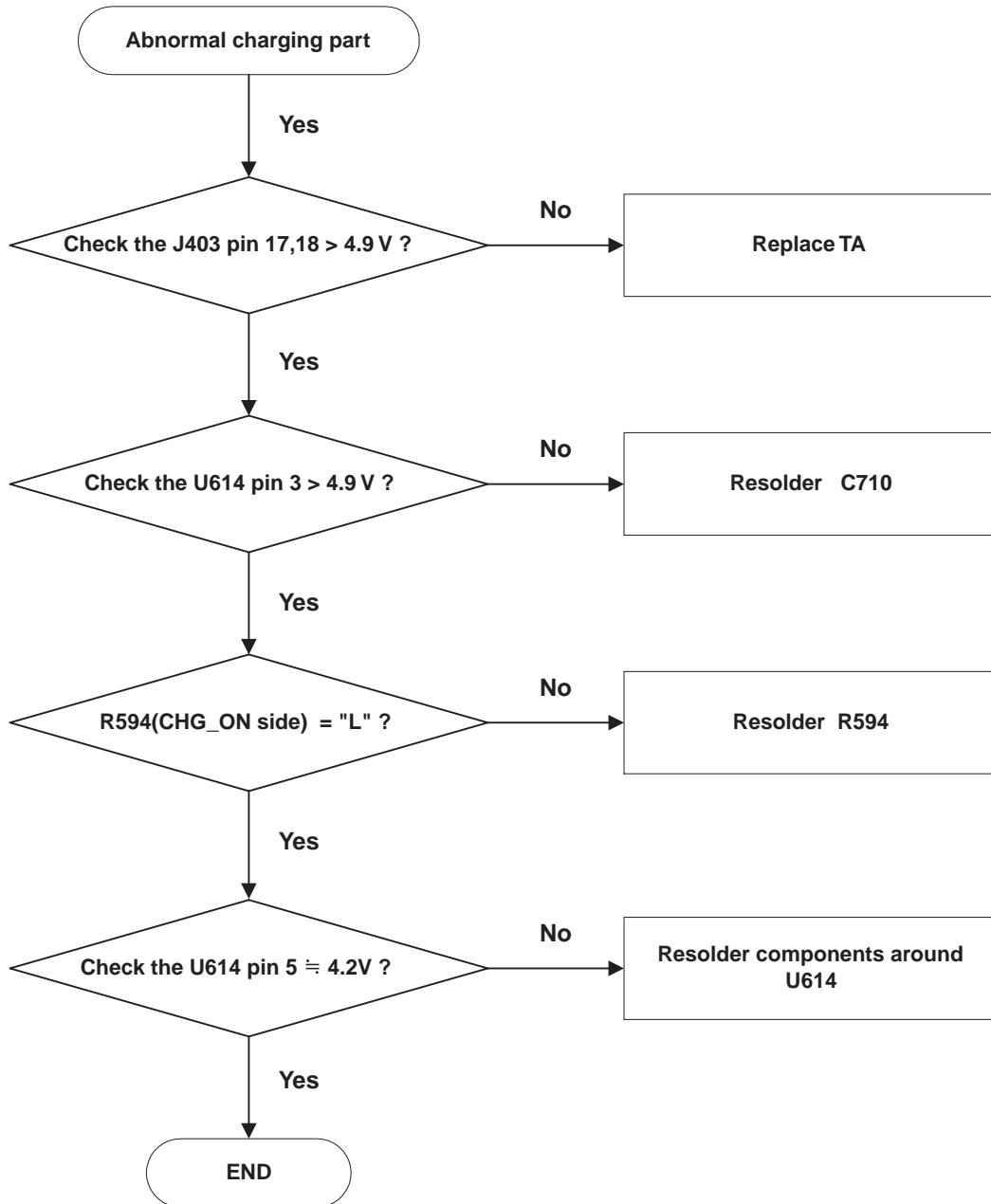




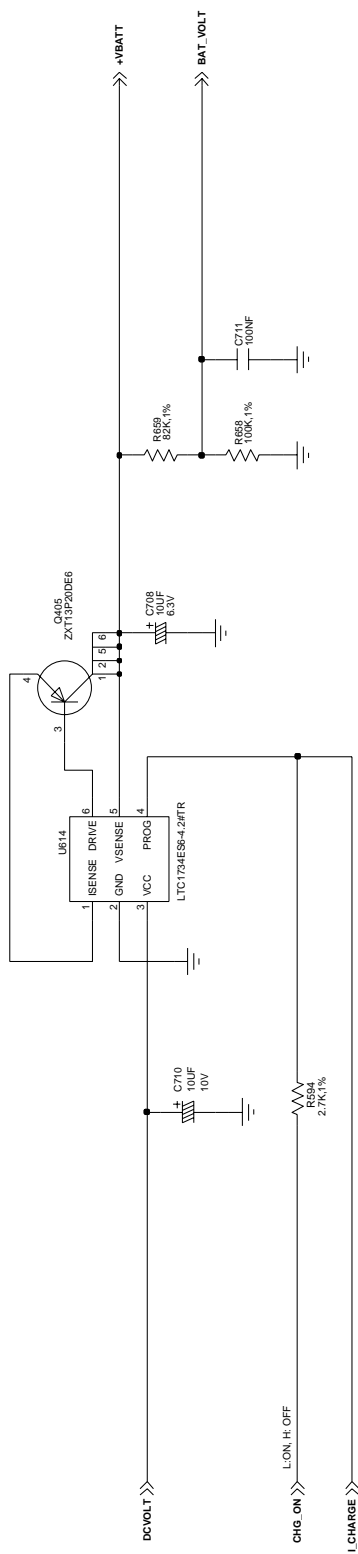
---

## 5-3 Charging Part

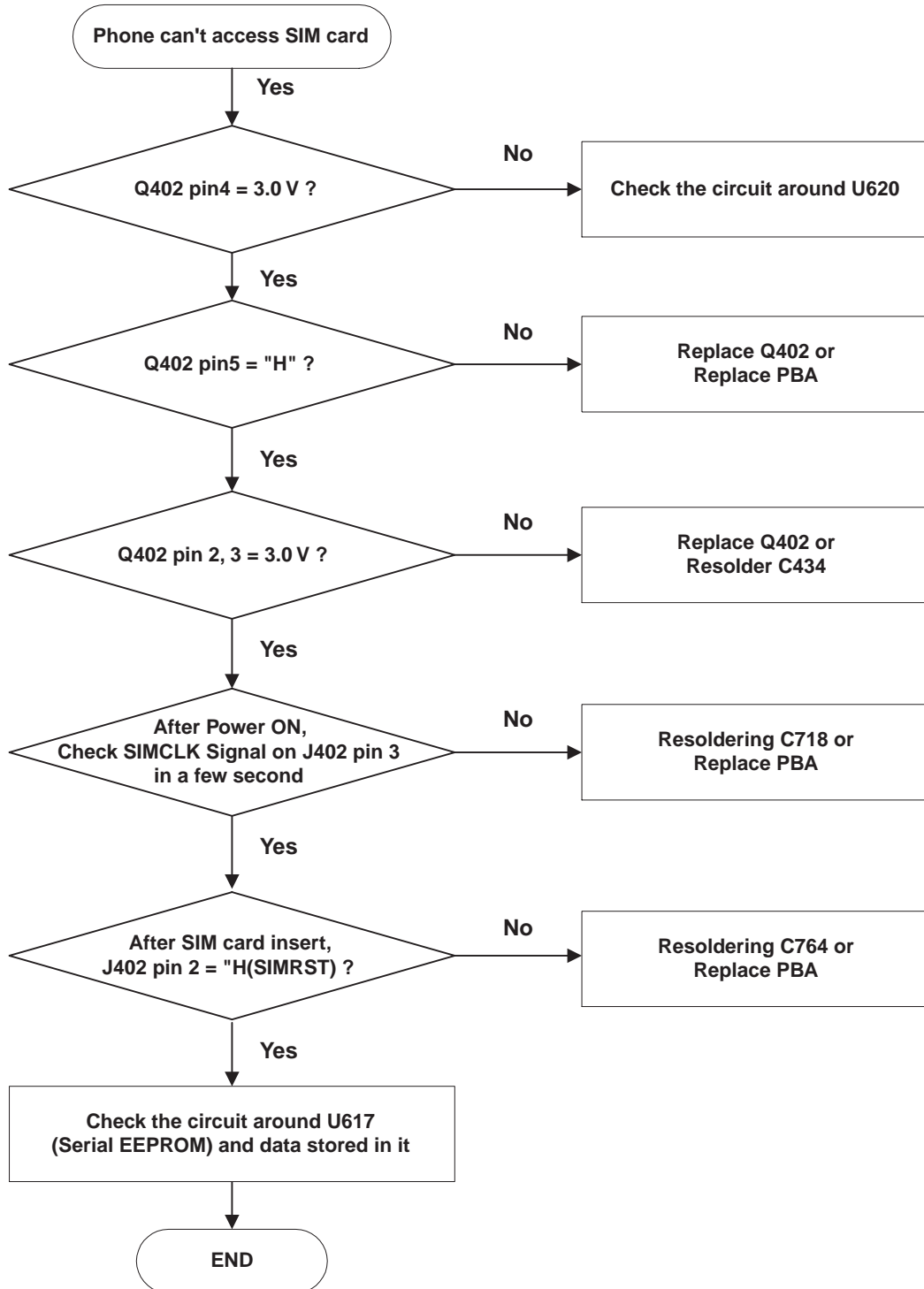
---







## 5-4 Sim Part

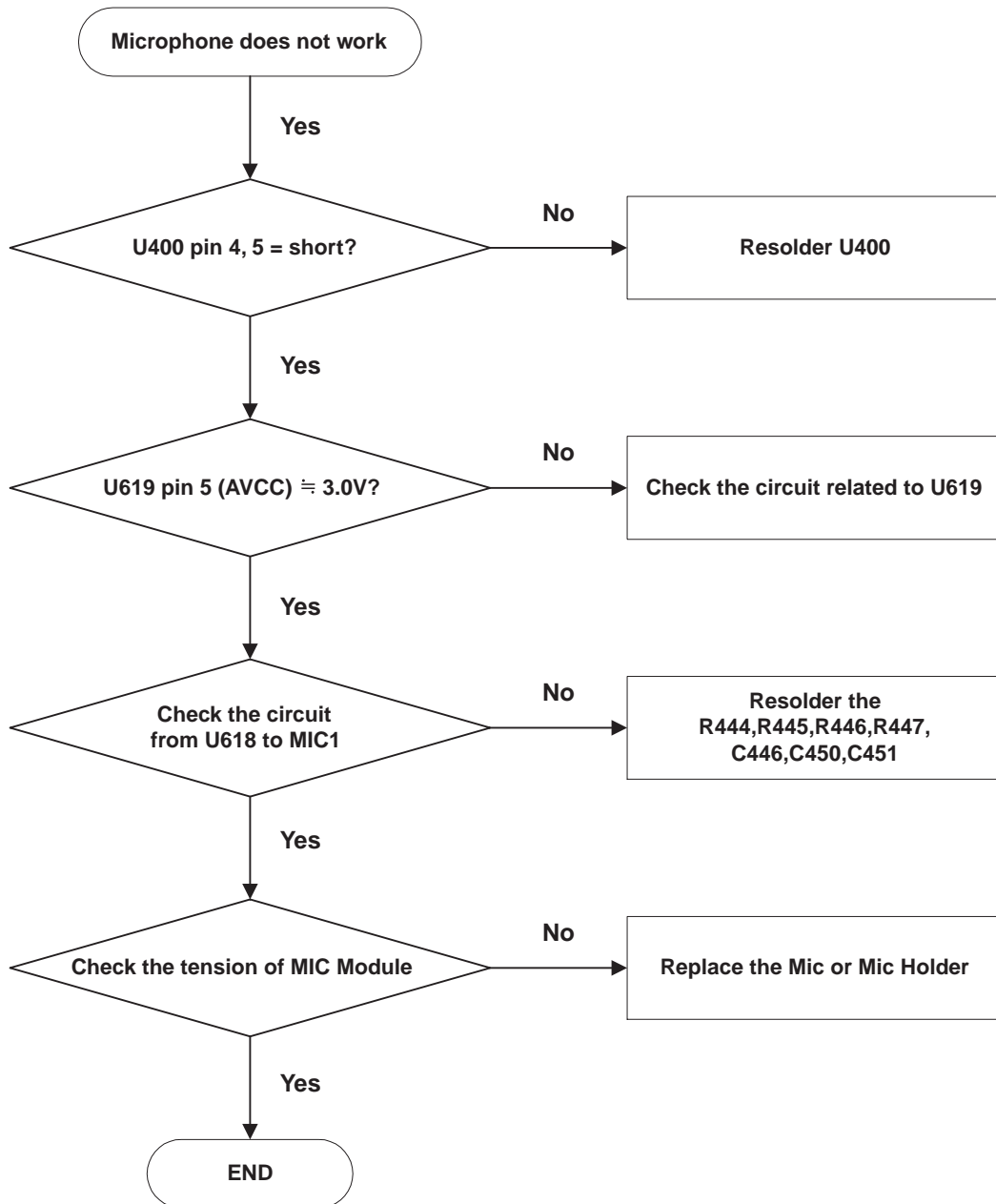


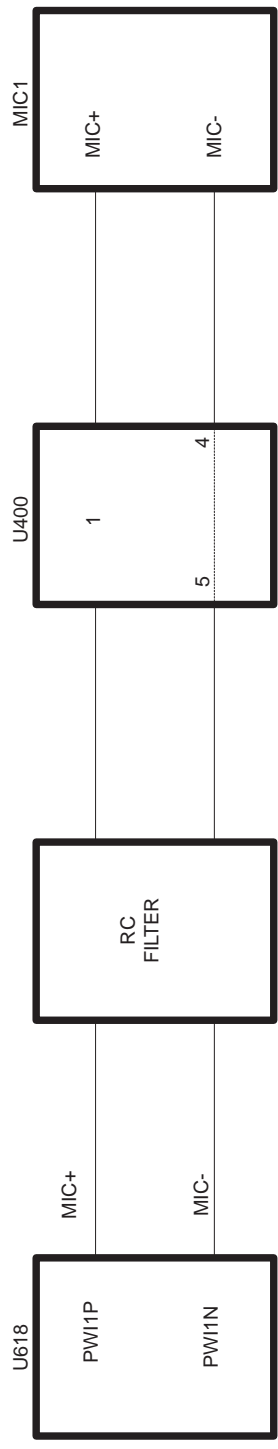


---

## 5-5 Microphone Part

---

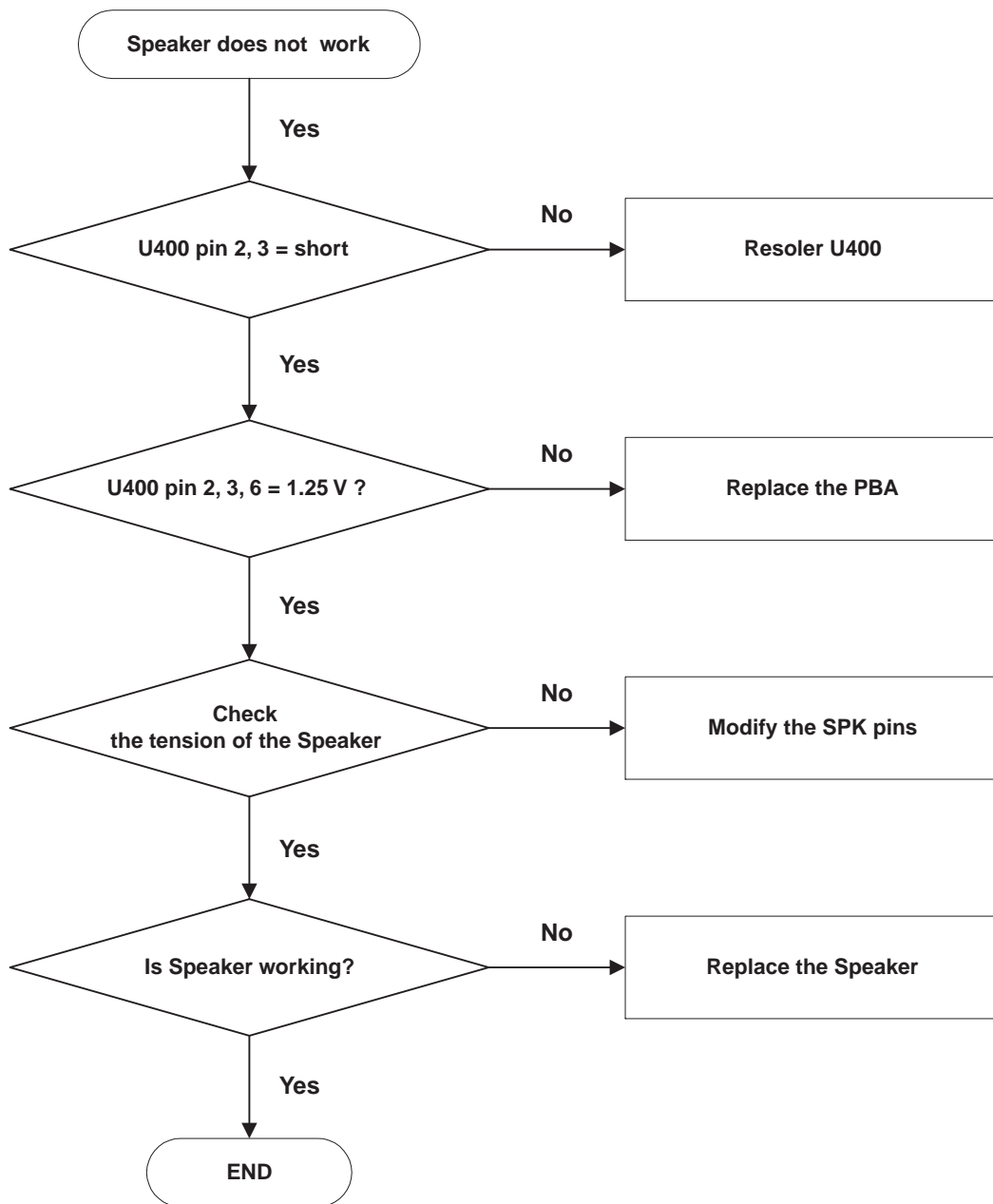


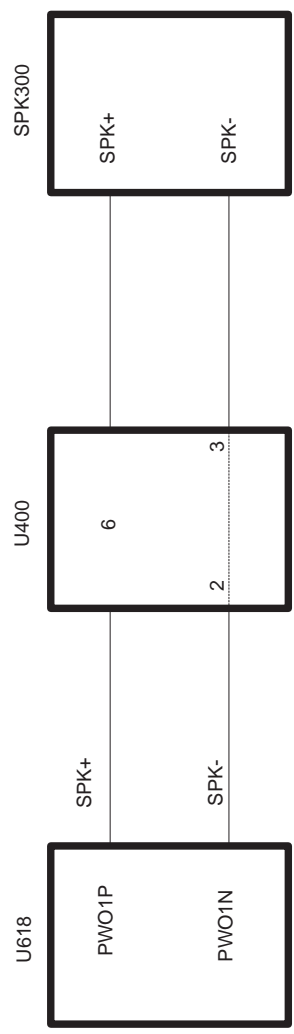


---

## 5-6 Speaker Part

---

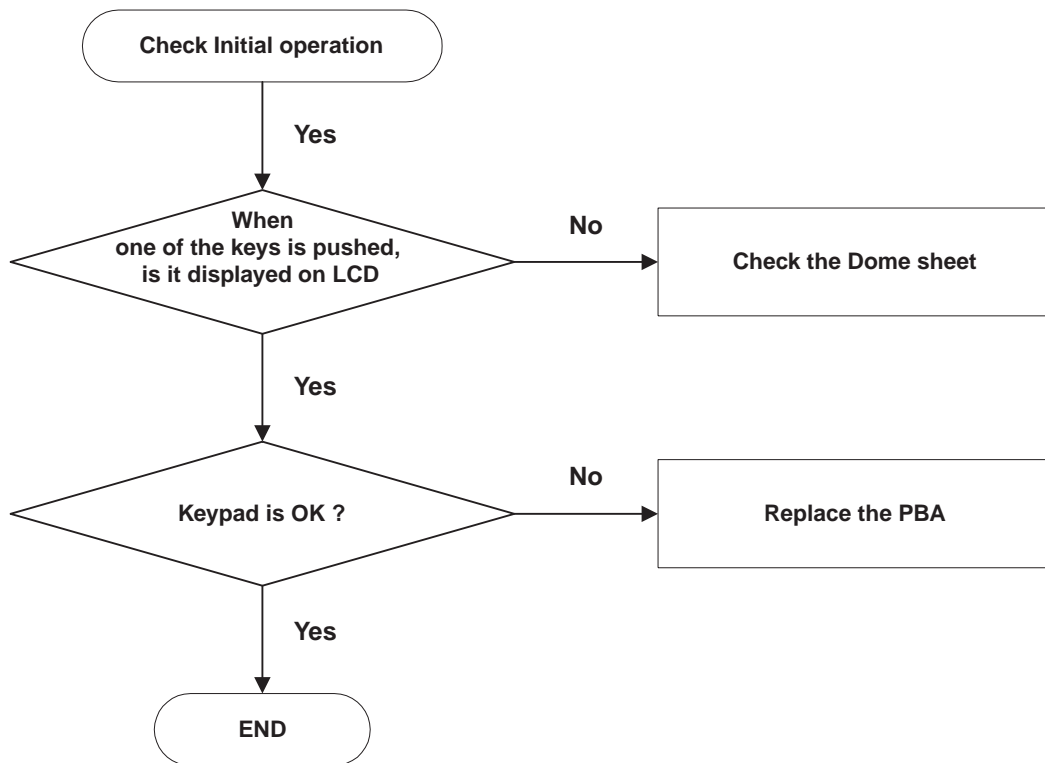




---

## 5-7 Key Data Input

---

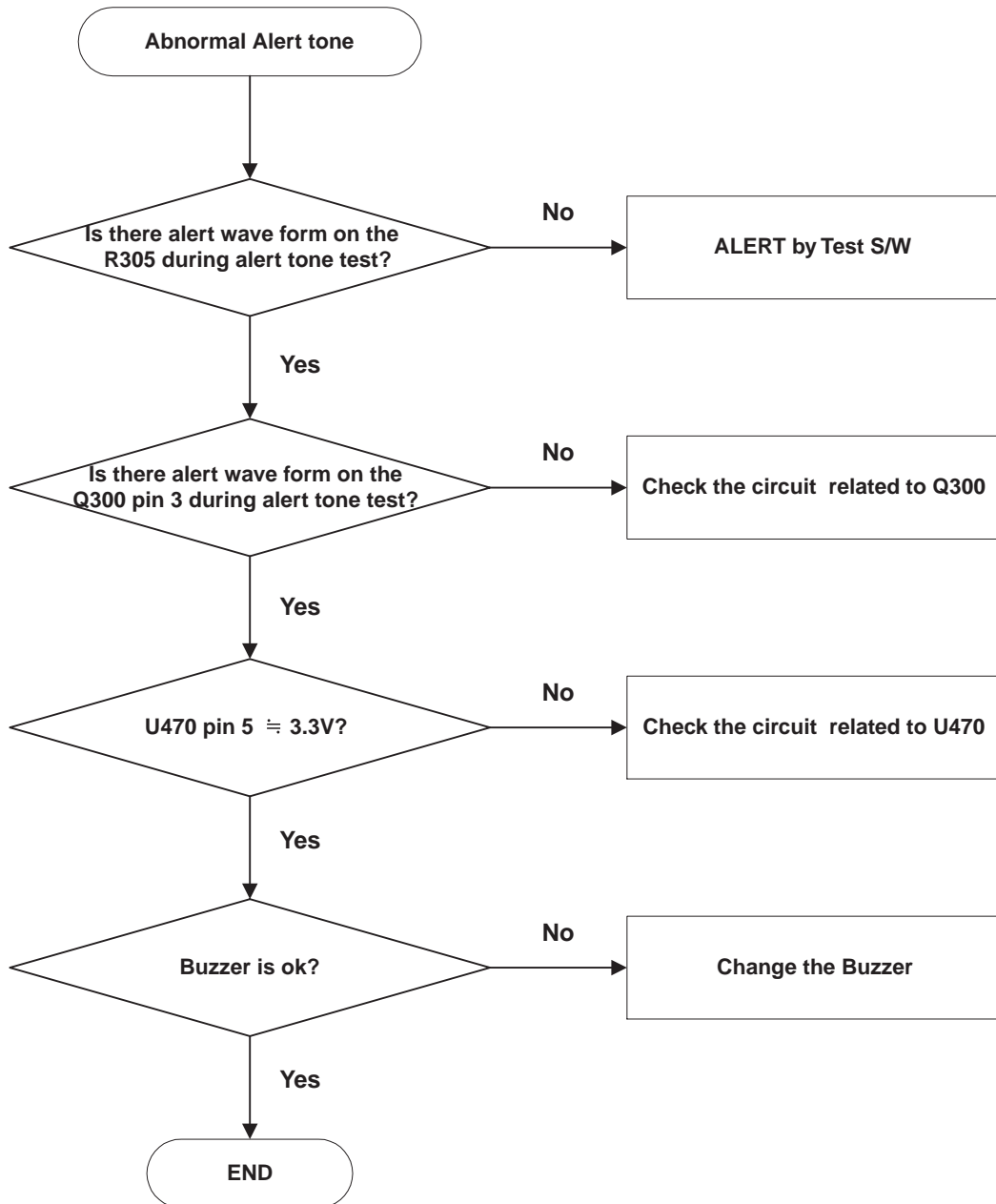


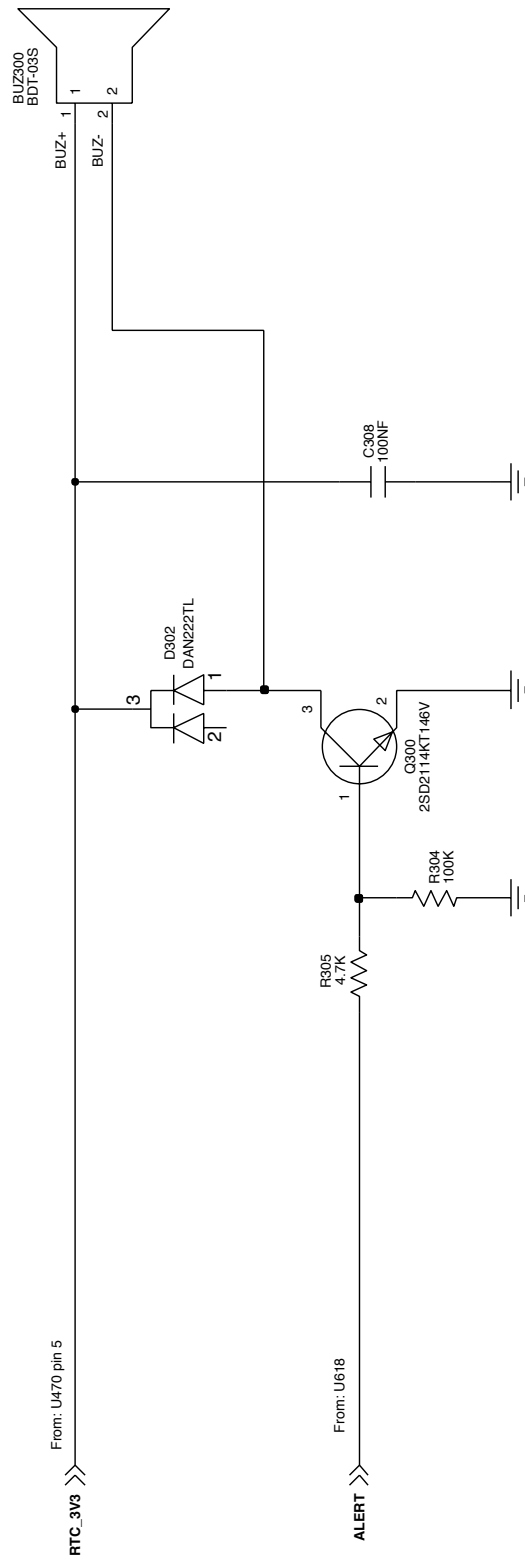


---

## 5-8 Alert Tone

---

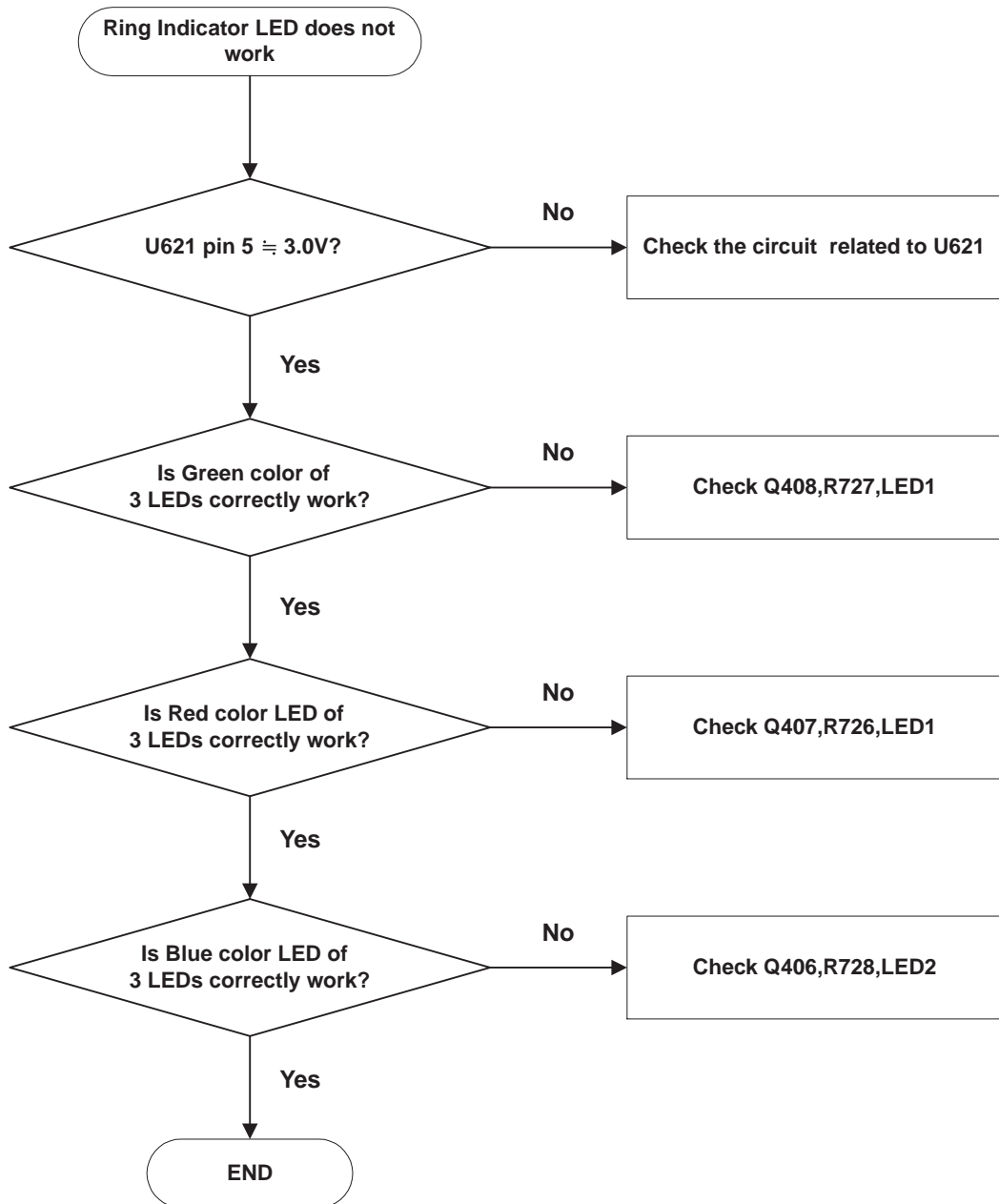


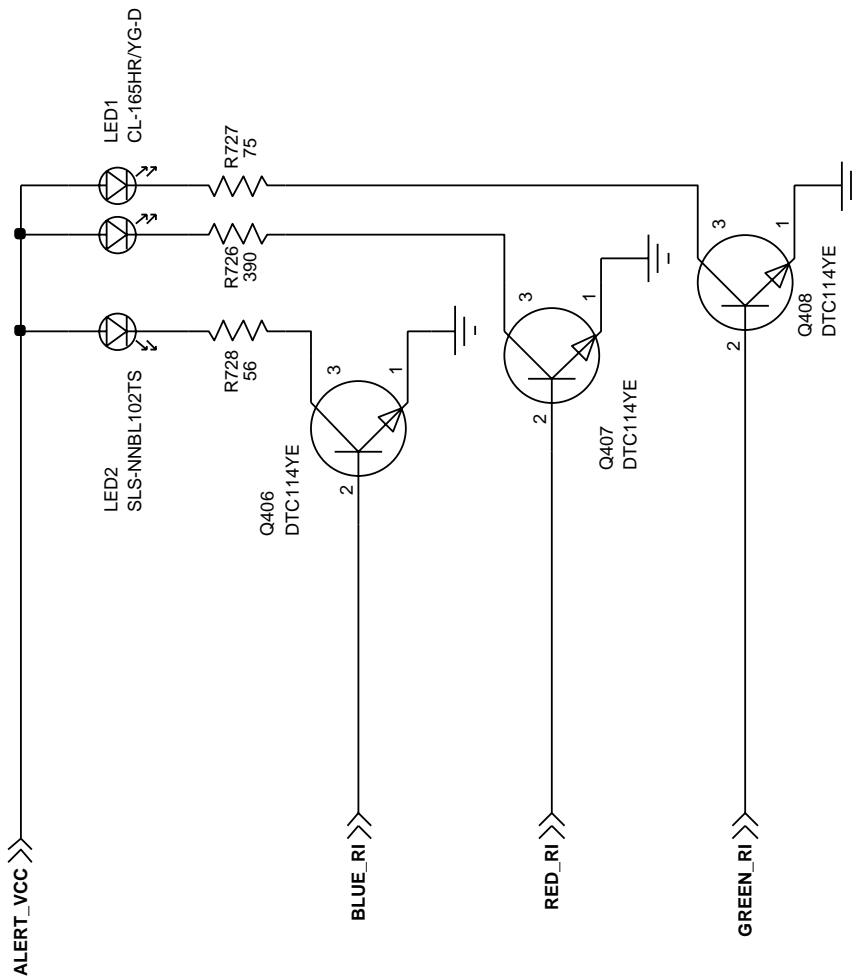


---

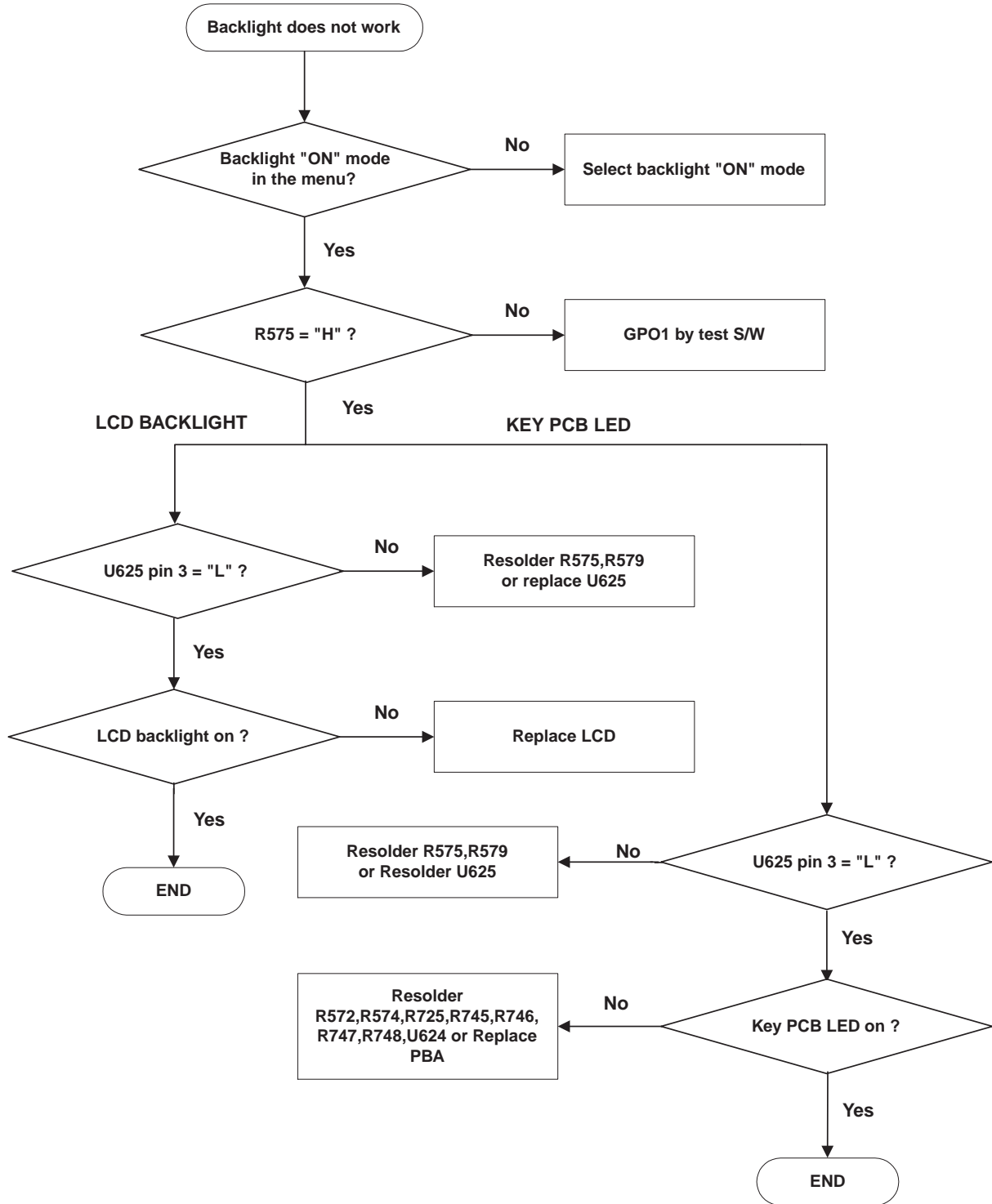
## 5-9 Ring Indicator

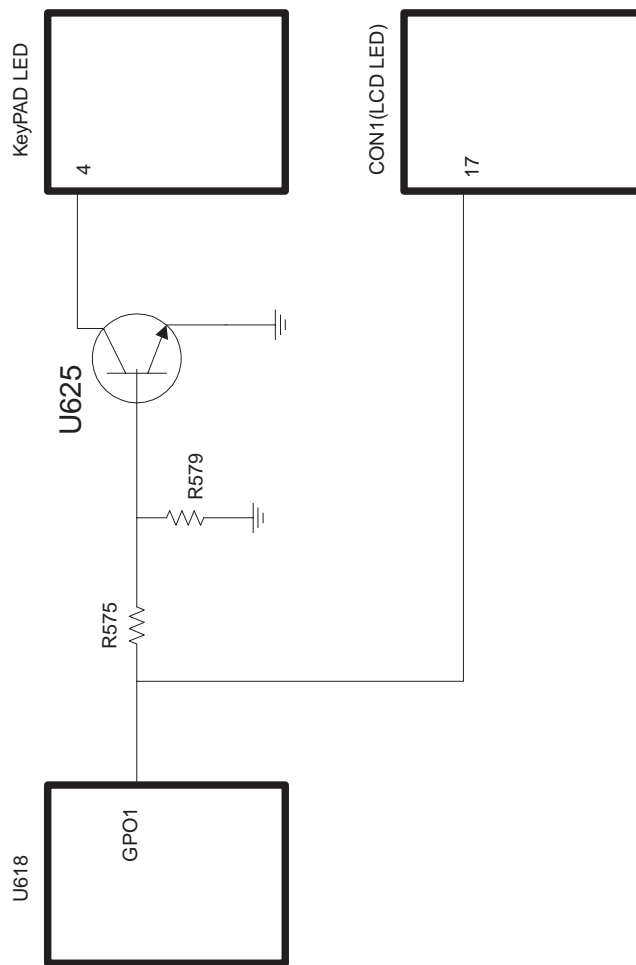
---



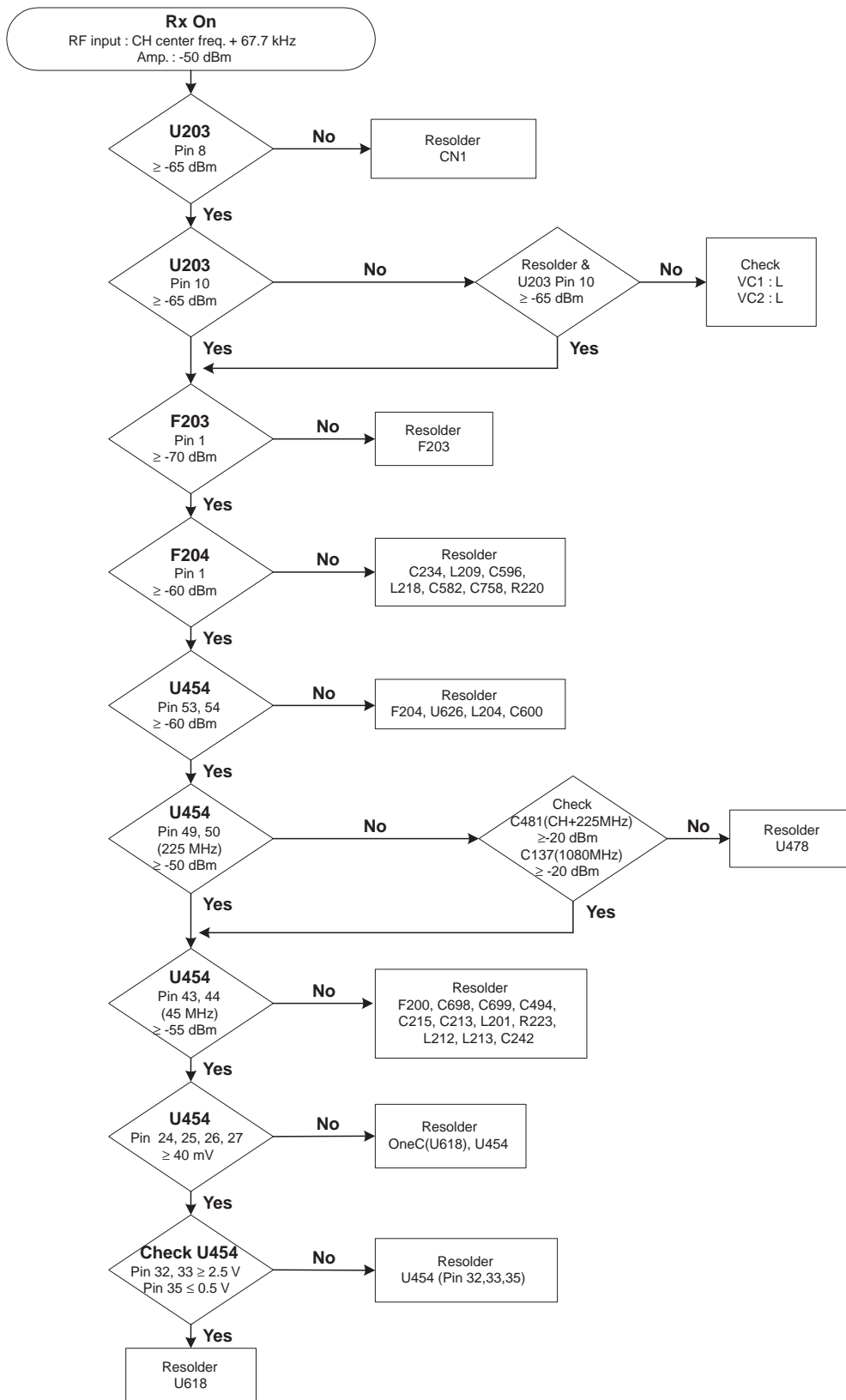


## 5-10 Back Light

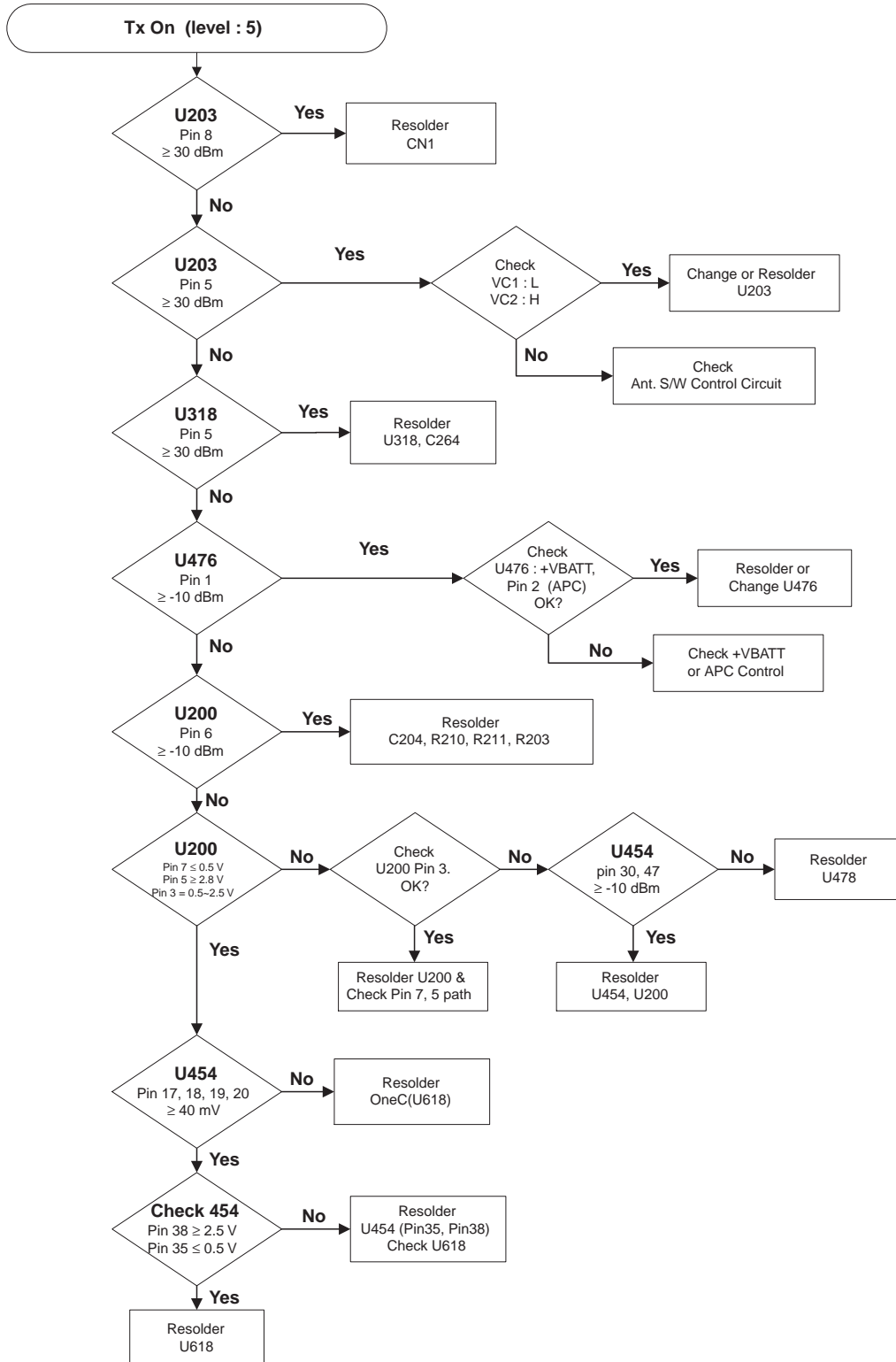




## 5-11 GSM Receiver

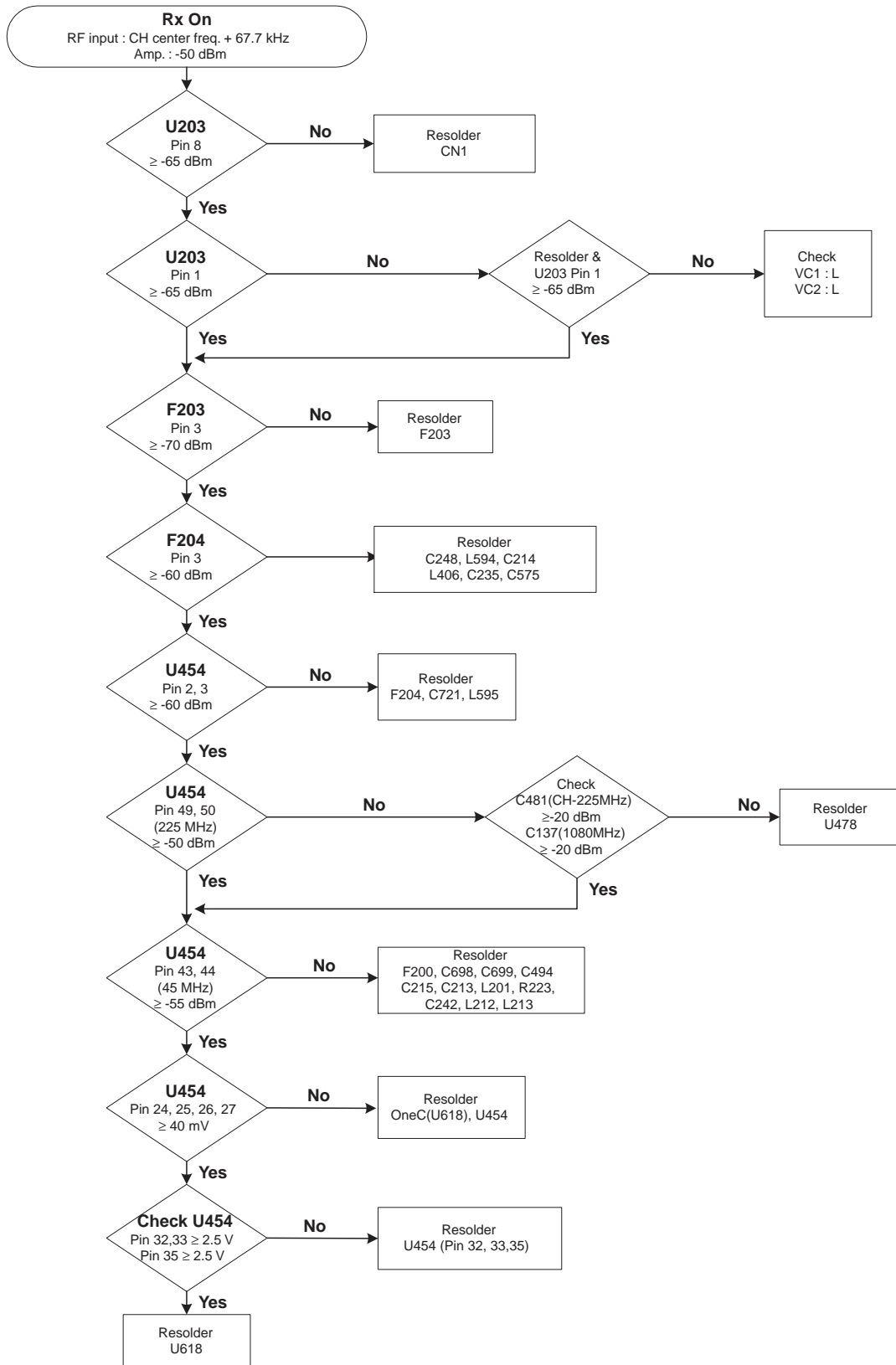


## 5-12 GSM Transmitter





## 5-13 DCS Receiver



## 5-14 DCS Transmitter

