



Cellular Phone SCH-A212

SERVICE *Manual*

Cellular Phone



CONTENTS

1. Exploded Views and Parts List
2. Electrical Parts List
3. Block Diagrams
4. PCB Diagrams
5. Circuit Diagrams



1. SCH-A212 MAIN Electrical Parts List

Level	SEC CODE	Design LOC	DESCRIPTIONS
0	SCH-A212		
1	6001-000464		SCREW-MACHINE PH, +, M1.4, L4, BLACK, SM10C, -
1	GH43-00405A		BATTERY-570 MA, RED, LEVEL(ENG) LP423048B, SCH-A212, LI-ION, 570 MAH, 4.2 V
1	GH43-00405B		BATTERY-570 MA, WHITE, LEVEL(ENG) LP423048B, SCH-A212, LI-ION, 570 MAH, 4.2 V
1	GH43-00406A		BATTERY-700 MA, RED, LEVEL(ENG) LP423048B, SCH-A212, LI-ION, 700 MAH, 4.2 V
1	GH43-00406B		BATTERY-700 MA, WHITE, LEVEL(ENG) LP423048B, SCH-A212, LI-ION, 700 MAH, 4.2 V
1	GH73-00487A		RMO-COVER CONNECTOR SCH-A360, URETHANE, 13.5 X 3.2 X 4.2, RED, -, -
1	GH73-00502A		RMO-RF JACK HOLDER SCH-A360, SI RUBBER, -, RED, -, -
1	GH75-00223H		MEC-HANGER ROPE SGH-2300, -, RED
1	GH75-00948A		MEC-VOLUME KEY SCH-A360, SEC, -, -, -, -, -
2	GH72-01737A		PMO-VOLUME KEY SCH-A360, -, ABS, -, -, -, -
2	GH73-00485A		RMO-VOL KEY RUBBER SCH-A360, URETHANE RUBBER, 13.9 X 3.3 X 1.9, BLK
1	GH75-01565A		MEC-ANT CONTACT SPH-A250, SEC, -, -, AU, -, -, -
1	GH92-00999A		PBA MAIN-SCHA212 SCH-A212, -, USA, -, -, -, -, -
1	GH97-01938A		MEA FRONT-RED SCH-A212, SEC, KORA, RED, -, -, -
2	6001-001155		SCREW- MACHINE PH(PI2.5), +, M1.4, L3.5, ZPC(BLK)
3	3710-001585		CONNECTOR-SOCKET 20P, 2R, 0.5 mm, SMD-S, AUF
3	GH31-00030A		MOTOR-SPH-A250 VIBRATION DMJBRK32L, SPH-A250, -, -, -, DC2.5-3.5V/90 MA,
3	3002-001109		BUZZER- MAGNETIC 90dB, 3.6 V, 85 MA, 2550Hz, BK
3	3003-001049		MIC-CONDENSOR 10 V, 500 uA, 41dB(MA X), 2.2 KOHM
2	GH70-00070A		IPR-SHIELD COVER SCH-A360, ZN, -, T0.3, -, NI, -, -, -
2	GH72-02502A		PMO-WINDOW SCH-A211, -, P M MA, TRP, -, -, 0.8
2	GH72-02544A		PMO-KEY PAD SCH-A212, -, PC SHEET, -, -, -, -
2	GH73-00482A		RMO-BUZZ.HOLDER SCH-A360, CR RUBBER, 9.5 X 9.85 X 3.1, BLK
2	GH73-00483A		RMO-MIC HOLDER SCH-A360, CR RUBBER, 7 X 3.1, BLK, -, -
2	GH73-00513A		RMO-MIC DU MMY SCH-A360, CR RUBBER, PI5 X 0.5, BLK, 50, -
2	GH74-00677A		MPR-BOHO SPONGE SPH-A2100, PORON+TAPE, 5 X 5 X T0.3, -, -
2	GH74-00892A		MPR-SHIELD TAPE 5 SCH-A8800, TAPE, T0.14, -, -
2	GH74-01012A		MPR-MOTOR SPONGE SCH-A360, SPONGE, PI11.65 X T0.3, BLK, -
2	GH74-01013A		MPR-HOLE SHEET SCH-A360, PC SHEET, PI4.4 X T0.3, RED, -
2	GH74-01055A		MPR-WINDOW BOHO TAPE SCH-A360, VINYL(3M 4187), T0.1, -, -
2	GH74-01098A		MPR-CON SHIELD SPONGE SPH-A4000, -, 5 X 6 X T0.3, -, -
2	GH74-01601A		MPR-SIDE SPONGE SPH-A250, SPONGE, 1.7 X 20.5 X T0.5, -, -
2	GH74-01653A		MPR-SPONGE ESD SGH-A400, PORON+TAPE, PI13 X T1, BLK, -
2	GH74-01764A		MPR-SHIELD SPONGE SGH-A400, DK-G102, 3 X 3 X T2, GLD
2	GH74-02340A		MPR-LCD REAR VINYL SCH-A212, VINYL, 0.8 X 1.3 X T0.05
2	GH74-02341A		MPR-SHIELD TAPE SCH-A212, TAPE, 5 X 6 X T0.1, -, -, -, -, -
2	GH74-02343A		MPR-F/UPPER SPONGE SCH-A212, PORON, 1.2 X 6.5 X T0.65, -, -, -
2	GH75-01109A		MEC-HINGE HOLDER SPH-A250, SEC, -, -, GLD, -, -

Level	SEC CODE	Design LOC	DESCRIPTIONS
3	GH70-00100A		IPR-HINGE HOLDER SPH-A250, ZN, -, T1.4, AU, -, -
3	GH75-00414D		MEC-HINGE ASS'Y SCH-A360, SEC, -, -, SIL, -, -
4	GH70-00075A		IPR-SPRING HINGE SCH-A100, STS304, -, PI4.5 X PI0.65 X 8.2, -, -,
4	GH72-00291A		PMO-SHAFT HINGE SCH-A100, POM, BLK, -, -
4	GH72-00292A		PMO-CAM HINGE SCH-A100, POM, BLK, -, -
4	GH72-00861A		PMO-HINGE HOUSING SCH-850, PC, SIL, -, -
2	GH75-01136A		MEC-FRONT SCH-A212, SEC, -, -, RED, -, -
3	GH72-01711A		PMO-HINGE DU MMY SCH-A360, -, PCT+ABC, BLK, -, -, -
3	GH72-01741A		PMO-REF LED SCH-A360, -, P M MA, -, -, -, -
3	GH72-02540A		PMO-FRONT COVER SCH-A212, -, PC, RED, -, -, -
3	GH73-00481A		RMO-CUSHION RUBBER SCH-A360, CR RUBBER, 2.9 X 2 X 5.2, RED, -, -
2	GH75-01138A		MEC-FOLDER LOWER SCH-A212, SEC, -, -, RED, -, -
3	GH72-01744A		PMO-EAR PIECE SCH-A360, -, PC, RED, -, -, -
3	GH72-02538A		PMO-F LOWER SCH-A212, -, PC, RED, -, -, -
3	GH74-00791A		MPR-EAR PIECE TAPE SCH-A360, 3M9828, 30.15 X 13.15 X T0.1, TRP, -
3	GH74-00792A		MPR-WINDOW LCD TAPE SCH-A360, 3MY9948H K, 36 X 31.5 X T0.15, TRP, -
3	GH74-00793A		MPR-LCD SPONGE SCH-A360, PORON, 36 X 31.5 X T0.5, BLK, -
3	GH74-01099A		MPR-EARPIECE NET SCH-A360, HIMERON, PI11 X T0.45, -, -
3	GH74-02342A		MPR-F/LOWER VINYL SCH-A212, VINYL, 9 X 6 X T0.05, -, -, -, -, -
2	GH75-01203A		MEC-F/UPPER SCH-A212, SEC, -, -, RED, -, -
3	GH70-00086A		IPR-ROSE DECORATION SCH-A360, SUS, -, T0.2, -, GLD PLT, -, -, -
3	GH72-02723A		PMO-F/UPPER SCH-A212, -, PC, RED, -, -, -
3	GH74-01089A		MPR-FOLDER REAR BOHOTAPE SPH-A4000, VINYL(3M), T0.1, -, -
1	GH97-01939A		MEA REAR-RED SCH-A212, SEC, KORA, RED, -, -, -
2	GH75-01137A		MEC-REAR SCH-A212, SEC, -, -, RED, -, -
3	GH68-00973B		LABEL(R)-QUALCO MM SCH-A300, VINYL, T0.12, 10, 4, -, TRP, -, -,
3	GH70-00021A		IPR-SPRING LOCKER SCH-A100, STS304, -, T3.3, -, -, -, -, -
3	GH70-00123A		IPR-ANT BRAKET SCH-A212, ZN, T1, -, -, AU, -, -, -
3	GH72-01740A		PMO-BATT.LOCKER SCH-A360, -, PC, RED, -, -, -
3	GH72-01877A		PMO-REAR SHEET SCH-A360, -, PC SHEET, RED, -, -, -
3	GH72-02539A		PMO-REAR COVER SCH-A212, -, PC, RED, -, -, -
3	GH73-00486A		RMO-EARJACK COVER SCH-A360, URETHANE RUBBER, 5.3 X 8.6, RED, -, -
3	GH74-00969A		MPR-REAR TAPE SCH-A360, TAPE, 11 X 11 X T0.05, -, -
1	GH99-02427A		PAA MAIN-ISRL SCH-A212, -, ISRL, -, -, -
2	GG68-10705A		LABEL(P)-SEAL SP-R912, CRP, 65.0 x 95.0, -, ORG
2	GH68-00662B		LABEL(P)-BAR CODE SCH-3500, WHITE POLYESTER, 67 X 41, -, WHT
2	GH68-01778A		LABEL(P)-BARCODE SHIPPING SGH-A100, ART, 100G, 250, 100, -, WHT
2	GH68-02037A		LABEL(R)- MAIN(ISRL) SCH-A212, MAT, 100G, 39.7, 29.8, -, SIL, -, -, -
2	GH69-00837A		BOX (P)-UNIT MAIN SCH-A212, SC300+E(KOL), -, -, -, -, 135 X 80 X 195
2	GH69-00868A		CUSHION-CASE(DTC)SCH-A212, HIPS, -, -, -, -, -, 192 X 132 X 76

Level	SEC CODE	Design LOC	DESCRIPTIONS
2	GH69-00937A		CUSHION-JEWEL CASE SPH-A250, PRESS+PS, -, -, -, -, -, 100 X 65 X 25
2	GH69-11279A		BOX (P)- MASTER(CH) CHI NA, SGH-600, SW-3, 530 X 510 X 187
2	2203-005061	C101	C-CERAMIC, CHIP 100 NF, +80-20 %, 16 V, Y5 V, TP, 1005
2	2203-000254	C102	C-CERAMIC, CHIP 10 NF, 10 %, 16 V, X7R, TP, 1005, -
2	2203-000254	C103	C-CERAMIC, CHIP 10 NF, 10 %, 16 V, X7R, TP, 1005, -
2	2203-000940	C104	C-CERAMIC, CHIP 470 PF, 10 %, 50 V, X7R, TP, 1005, -
2	2203-000940	C105	C-CERAMIC, CHIP 470 PF, 10 %, 50 V, X7R, TP, 1005, -
2	2203-000254	C106	C-CERAMIC, CHIP 10 NF, 10 %, 16 V, X7R, TP, 1005, -
2	2203-005061	C107	C-CERAMIC, CHIP 100 NF, +80-20 %, 16 V, Y5 V, TP, 1005
2	2203-005061	C108	C-CERAMIC, CHIP 100 NF, +80-20 %, 16 V, Y5 V, TP, 1005
2	2203-000254	C109	C-CERAMIC, CHIP 10 NF, 10 %, 16 V, X7R, TP, 1005, -
2	2203-000233	C110	C-CERAMIC, CHIP 0.1 NF, 5 %, 50 V, NP0, TP, 1005
2	2203-005061	C111	C-CERAMIC, CHIP 100 NF, +80-20 %, 16 V, Y5 V, TP, 1005
2	2203-000233	C112	C-CERAMIC, CHIP 0.1 NF, 5 %, 50 V, NP0, TP, 1005
2	2203-005061	C113	C-CERAMIC, CHIP 100 NF, +80-20 %, 16 V, Y5 V, TP, 1005
2	2203-000940	C114	C-CERAMIC, CHIP 470 PF, 10 %, 50 V, X7R, TP, 1005, -
2	2203-000940	C115	C-CERAMIC, CHIP 470 PF, 10 %, 50 V, X7R, TP, 1005, -
2	2203-000254	C116	C-CERAMIC, CHIP 10 NF, 10 %, 16 V, X7R, TP, 1005, -
2	2203-000233	C117	C-CERAMIC, CHIP 0.1 NF, 5 %, 50 V, NP0, TP, 1005
2	2203-000233	C118	C-CERAMIC, CHIP 0.1 NF, 5 %, 50 V, NP0, TP, 1005
2	2203-000438	C119	C-CERAMIC, CHIP 1 NF, 10 %, 50 V, X7R, TP, 1005, -
2	2203-000438	C120	C-CERAMIC, CHIP 1 NF, 10 %, 50 V, X7R, TP, 1005, -
2	2203-000438	C121	C-CERAMIC, CHIP 1 NF, 10 %, 50 V, X7R, TP, 1005, -
2	2203-005061	C122	C-CERAMIC, CHIP 100 NF, +80-20 %, 16 V, Y5 V, TP, 1005
2	2203-000254	C123	C-CERAMIC, CHIP 10 NF, 10 %, 16 V, X7R, TP, 1005, -
2	2203-005061	C124	C-CERAMIC, CHIP 100 NF, +80-20 %, 16 V, Y5 V, TP, 1005
2	2203-000438	C125	C-CERAMIC, CHIP 1 NF, 10 %, 50 V, X7R, TP, 1005, -
2	2203-000438	C126	C-CERAMIC, CHIP 1 NF, 10 %, 50 V, X7R, TP, 1005, -
2	2203-000438	C127	C-CERAMIC, CHIP 1 NF, 10 %, 50 V, X7R, TP, 1005, -
2	2203-000254	C128	C-CERAMIC, CHIP 10 NF, 10 %, 16 V, X7R, TP, 1005, -
2	2203-000714	C129	C-CERAMIC, CHIP 3.3 NF, 10 %, 50 V, X7R, TP, 1005, -
2	2203-000254	C140	C-CERAMIC, CHIP 10 NF, 10 %, 16 V, X7R, TP, 1005, -
2	2203-005061	C142	C-CERAMIC, CHIP 100 NF, +80-20 %, 16 V, Y5 V, TP, 1005
2	2203-005061	C143	C-CERAMIC, CHIP 100 NF, +80-20 %, 16 V, Y5 V, TP, 1005
2	2203-000254	C144	C-CERAMIC, CHIP 10 NF, 10 %, 16 V, X7R, TP, 1005, -
2	2203-000940	C145	C-CERAMIC, CHIP 470 PF, 10 %, 50 V, X7R, TP, 1005, -
2	2203-000254	C146	C-CERAMIC, CHIP 10 NF, 10 %, 16 V, X7R, TP, 1005, -
2	2203-001432	C147	C-CERAMIC, CHIP 47 NF, +80-20 %, 16 V, Y5 V, TP, 1005
2	2404-001017	C160	C-TA, CHIP 1 UF, 20 %, 10 V, GP, TP, 2012, 2, 0
2	2203-000940	C161	C-CERAMIC, CHIP 470 PF, 10 %, 50 V, X7R, TP, 1005, -

Level	SEC CODE	Design LOC	DESCRIPTIONS
2	2203-000940	C162	C-CERAMIC, CHIP 470 PF, 10 %, 50 V, X7R, TP, 1005, -
2	2203-000628	C201	C-CERAMIC, CHIP 0.022 NF, 5 %, 50 V, NP0, TP, 1005
2	2203-005061	C202	C-CERAMIC, CHIP 100 NF, +80-20 %, 16 V, Y5 V, TP, 1005
2	2203-000885	C203	C-CERAMIC, CHIP 4.7 NF, 10 %, 25 V, X7R, TP, 1005, -
2	2203-000995	C204	C-CERAMIC, CHIP 0.047 NF, 5 %, 50 V, NP0, TP, 1005
2	2203-000254	C205	C-CERAMIC, CHIP 10 NF, 10 %, 16 V, X7R, TP, 1005, -
2	2203-000233	C207	C-CERAMIC, CHIP 0.1 NF, 5 %, 50 V, NP0, TP, 1005
2	2203-000254	C208	C-CERAMIC, CHIP 10 NF, 10 %, 16 V, X7R, TP, 1005, -
2	2203-001598	C209	C-CERAMIC, CHIP 2200 NF, +80-20 %, 16 V, Y5 V, TP, 2012
2	2203-002525	C210	C-CERAMIC, CHIP 0.56 NF, 10 %, 50 V, X7R, TP, 1005
2	2203-002525	C211	C-CERAMIC, CHIP 0.56 NF, 10 %, 50 V, X7R, TP, 1005
2	2203-001598	C213	C-CERAMIC, CHIP 2200 NF, +80-20 %, 16 V, Y5 V, TP, 2012
2	2203-000254	C214	C-CERAMIC, CHIP 10 NF, 10 %, 16 V, X7R, TP, 1005, -
2	2203-000233	C215	C-CERAMIC, CHIP 0.1 NF, 5 %, 50 V, NP0, TP, 1005
2	2203-000995	C216	C-CERAMIC, CHIP 0.047 NF, 5 %, 50 V, NP0, TP, 1005
2	2203-000254	C217	C-CERAMIC, CHIP 10 NF, 10 %, 16 V, X7R, TP, 1005, -
2	2203-001072	C218	C-CERAMIC, CHIP 0.056 NF, 5 %, 50 V, NP0, TP, 1005
2	2203-000254	C219	C-CERAMIC, CHIP 10 NF, 10 %, 16 V, X7R, TP, 1005, -
2	2404-001151	C220	C-TA, CHIP 33 UF, 20 %, 6.3 V, LZ, TP, 3216
2	2203-001178	C221	C-CERAMIC, CHIP 0.006 NF, 0.5 PF, 50 V, NP0, TP, 1005
2	2203-001259	C222	C-CERAMIC, CHIP 0.008 NF, 0.5 PF, 50 V, NP0, TP, 1005
2	2203-001072	C223	C-CERAMIC, CHIP 0.056 NF, 5 %, 50 V, NP0, TP, 1005
2	2203-000940	C226	C-CERAMIC, CHIP 470 PF, 10 %, 50 V, X7R, TP, 1005, -
2	2404-001017	C227	C-TA, CHIP 1 UF, 20 %, 10 V, GP, TP, 2012, 2, 0
2	2203-000233	C229	C-CERAMIC, CHIP 0.1 NF, 5 %, 50 V, NP0, TP, 1005
2	2203-000438	C23	C-CERAMIC, CHIP 1 NF, 10 %, 50 V, X7R, TP, 1005, -
2	2203-000254	C230	C-CERAMIC, CHIP 10 NF, 10 %, 16 V, X7R, TP, 1005, -
2	2203-000233	C231	C-CERAMIC, CHIP 0.1 NF, 5 %, 50 V, NP0, TP, 1005
2	2203-000233	C232	C-CERAMIC, CHIP 0.1 NF, 5 %, 50 V, NP0, TP, 1005
2	3301-001342	C233	CORE-FERRITE BEADAB, 1.5 KOHM, 1 X 0.5 X 0.5 MM, 100 MA, TP, M, 1.4 OHM
2	2203-001072	C234	C-CERAMIC, CHIP 0.056 NF, 5 %, 50 V, NP0, TP, 1005
2	2203-000438	C235	C-CERAMIC, CHIP 1 NF, 10 %, 50 V, X7R, TP, 1005, -
2	2203-000696	C236	C-CERAMIC, CHIP 0.002 NF, 0.25 PF, 50 V, NP0, TP, 1005
2	2203-000995	C237	C-CERAMIC, CHIP 0.047 NF, 5 %, 50 V, NP0, TP, 1005
2	2203-000995	C238	C-CERAMIC, CHIP 0.047 NF, 5 %, 50 V, NP0, TP, 1005
2	2203-000386	C239	C-CERAMIC, CHIP 0.015 NF, 5 %, 50 V, NP0, TP, 1005
2	2203-005393	C318	C-CERAMIC, CHIP 0.005 NF, 0.1 PF, 50 V, NP0, TP, 1005
2	2203-005393	C323	C-CERAMIC, CHIP 0.005 NF, 0.1 PF, 50 V, NP0, TP, 1005
2	2203-000438	C331	C-CERAMIC, CHIP 1 NF, 10 %, 50 V, X7R, TP, 1005, -
2	2203-000438	C332	C-CERAMIC, CHIP 1 NF, 10 %, 50 V, X7R, TP, 1005, -

Level	SEC CODE	Design LOC	DESCRIPTIONS
2	2404-001105	C333	C-TA, CHIP 10 UF, 20 %, 6.3 V, GP, TP, 2012
2	2203-000254	C334	C-CERAMIC, CHIP 10 NF, 10 %, 16 V, X7R, TP, 1005, -
2	2203-000233	C335	C-CERAMIC, CHIP 0.1 NF, 5 %, 50 V, NP0, TP, 1005
2	2203-000254	C336	C-CERAMIC, CHIP 10 NF, 10 %, 16 V, X7R, TP, 1005, -
2	2203-000233	C337	C-CERAMIC, CHIP 0.1 NF, 5 %, 50 V, NP0, TP, 1005
2	2203-000254	C338	C-CERAMIC, CHIP 10 NF, 10 %, 16 V, X7R, TP, 1005, -
2	2203-000885	C339	C-CERAMIC, CHIP 4.7 NF, 10 %, 25 V, X7R, TP, 1005, -
2	2203-000254	C340	C-CERAMIC, CHIP 10 NF, 10 %, 16 V, X7R, TP, 1005, -
2	2203-005061	C341	C-CERAMIC, CHIP 100 NF, +80-20 %, 16 V, Y5 V, TP, 1005
2	2203-000438	C342	C-CERAMIC, CHIP 1 NF, 10 %, 50 V, X7R, TP, 1005, -
2	2203-000311	C343	C-CERAMIC, CHIP 0.12 NF, 5 %, 50 V, NP0, TP, 1005
2	2203-005393	C344	C-CERAMIC, CHIP 0.005 NF, 0.1 PF, 50 V, NP0, TP, 1005
2	2203-000885	C345	C-CERAMIC, CHIP 4.7 NF, 10 %, 25 V, X7R, TP, 1005, -
2	2203-000311	C346	C-CERAMIC, CHIP 0.12 NF, 5 %, 50 V, NP0, TP, 1005
2	2203-005480	C349	C-CERAMIC, CHIP 33 NF, 10 %, 10 V, X7R, TP, 1005, -
2	2404-001017	C350	C-TA, CHIP 1 UF, 20 %, 10 V, GP, TP, 2012, 2, 0
2	2203-005383	C370	C-CERAMIC, CHIP 7 PF, 0.1 PF, 50 V, NPO, TP, 1005, -
2	2203-000628	C371	C-CERAMIC, CHIP 0.022 NF, 5 %, 50 V, NP0, TP, 1005
2	2203-000438	C372	C-CERAMIC, CHIP 1 NF, 10 %, 50 V, X7R, TP, 1005, -
2	2203-000233	C373	C-CERAMIC, CHIP 0.1 NF, 5 %, 50 V, NP0, TP, 1005
2	2203-000696	C375	C-CERAMIC, CHIP 0.002 NF, 0.25 PF, 50 V, NP0, TP, 1005
2	2203-000870	C376	C-CERAMIC, CHIP 0.003 NF, 0.25 PF, 50 V, NP0, TP, 1005
2	2203-000438	C377	C-CERAMIC, CHIP 1 NF, 10 %, 50 V, X7R, TP, 1005, -
2	2203-005061	C378	C-CERAMIC, CHIP 100 NF, +80-20 %, 16 V, Y5 V, TP, 1005
2	2404-001105	C379	C-TA, CHIP 10 UF, 20 %, 6.3 V, GP, TP, 2012
2	2203-000233	C380	C-CERAMIC, CHIP 0.1 NF, 5 %, 50 V, NP0, TP, 1005
2	2203-000278	C381	C-CERAMIC, CHIP 0.01 NF, 0.5 PF, 50 V, NP0, TP, 1005
2	2203-000438	C382	C-CERAMIC, CHIP 1 NF, 10 %, 50 V, X7R, TP, 1005, -
2	2203-000870	C383	C-CERAMIC, CHIP 0.003 NF, 0.25 PF, 50 V, NP0, TP, 1005
2	2203-002443	C384	C-CERAMIC, CHIP 0.33 NF, 10 %, 50 V, X7R, TP, 1005
2	2203-005480	C385	C-CERAMIC, CHIP 33 NF, 10 %, 10 V, X7R, TP, 1005, -
2	2203-005061	C386	C-CERAMIC, CHIP 100 NF, +80-20 %, 16 V, Y5 V, TP, 1005
2	2203-000233	C387	C-CERAMIC, CHIP 0.1 NF, 5 %, 50 V, NP0, TP, 1005
2	2203-005061	C388	C-CERAMIC, CHIP 100 NF, +80-20 %, 16 V, Y5 V, TP, 1005
2	2404-001105	C389	C-TA, CHIP 10 UF, 20 %, 6.3 V, GP, TP, 2012
2	2203-000425	C390	C-CERAMIC, CHIP 0.018 NF, 5 %, 50 V, NP0, TP, 1005
2	2203-000425	C391	C-CERAMIC, CHIP 0.018 NF, 5 %, 50 V, NP0, TP, 1005
2	2203-000885	C393	C-CERAMIC, CHIP 4.7 NF, 10 %, 25 V, X7R, TP, 1005, -
2	2203-000885	C395	C-CERAMIC, CHIP 4.7 NF, 10 %, 25 V, X7R, TP, 1005, -
2	2203-005481	C396	C-CERAMIC, CHIP 47 NF, 10 %, 10 V, X7R, TP, 1005, -

Level	SEC CODE	Design LOC	DESCRIPTIONS
2	2203-000438	C398	C-CERAMIC, CHIP 1 NF, 10 %, 50 V, X7R, TP, 1005, -
2	2203-000438	C404	C-CERAMIC, CHIP 1 NF, 10 %, 50 V, X7R, TP, 1005, -
2	2203-000438	C407	C-CERAMIC, CHIP 1 NF, 10 %, 50 V, X7R, TP, 1005, -
2	2203-000233	C408	C-CERAMIC, CHIP 0.1 NF, 5 %, 50 V, NP0, TP, 1005
2	2203-000438	C409	C-CERAMIC, CHIP 1 NF, 10 %, 50 V, X7R, TP, 1005, -
2	2203-000254	C410	C-CERAMIC, CHIP 10 NF, 10 %, 16 V, X7R, TP, 1005, -
2	2203-000233	C411	C-CERAMIC, CHIP 0.1 NF, 5 %, 50 V, NP0, TP, 1005
2	2203-000233	C412	C-CERAMIC, CHIP 0.1 NF, 5 %, 50 V, NP0, TP, 1005
2	2203-000233	C413	C-CERAMIC, CHIP 0.1 NF, 5 %, 50 V, NP0, TP, 1005
2	2203-000550	C414	C-CERAMIC, CHIP 0.02 NF, 5 %, 50 V, NP0, TP, 1005
2	2404-001151	C415	C-TA, CHIP 33 UF, 20 %, 6.3 V, LZ, TP, 3216
2	2203-005061	C417	C-CERAMIC, CHIP 100 NF, +80-20 %, 16 V, Y5 V, TP, 1005
2	2203-000254	C418	C-CERAMIC, CHIP 10 NF, 10 %, 16 V, X7R, TP, 1005, -
2	2203-000254	C419	C-CERAMIC, CHIP 10 NF, 10 %, 16 V, X7R, TP, 1005, -
2	2203-000585	C420	C-CERAMIC, CHIP 220 PF, 10 %, 50 V, X7R, TP, 1005, -
2	2404-001092	C421	C-TA, CHIP 220 NF, 20 %, 20 V, GP, TP, 2012, -
2	2203-000254	C422	C-CERAMIC, CHIP 10 NF, 10 %, 16 V, X7R, TP, 1005, -
2	2203-000233	C423	C-CERAMIC, CHIP 0.1 NF, 5 %, 50 V, NP0, TP, 1005
2	2203-000233	C424	C-CERAMIC, CHIP 0.1 NF, 5 %, 50 V, NP0, TP, 1005
2	2203-000254	C425	C-CERAMIC, CHIP 10 NF, 10 %, 16 V, X7R, TP, 1005, -
2	2203-000233	C426	C-CERAMIC, CHIP 0.1 NF, 5 %, 50 V, NP0, TP, 1005
2	2203-000254	C428	C-CERAMIC, CHIP 10 NF, 10 %, 16 V, X7R, TP, 1005, -
2	2203-000233	C431	C-CERAMIC, CHIP 0.1 NF, 5 %, 50 V, NP0, TP, 1005
2	2203-000233	C432	C-CERAMIC, CHIP 0.1 NF, 5 %, 50 V, NP0, TP, 1005
2	2203-000233	C433	C-CERAMIC, CHIP 0.1 NF, 5 %, 50 V, NP0, TP, 1005
2	2203-000254	C435	C-CERAMIC, CHIP 10 NF, 10 %, 16 V, X7R, TP, 1005, -
2	2203-000233	C436	C-CERAMIC, CHIP 0.1 NF, 5 %, 50 V, NP0, TP, 1005
2	2203-000233	C437	C-CERAMIC, CHIP 0.1 NF, 5 %, 50 V, NP0, TP, 1005
2	2203-000233	C438	C-CERAMIC, CHIP 0.1 NF, 5 %, 50 V, NP0, TP, 1005
2	2203-000254	C501	C-CERAMIC, CHIP 10 NF, 10 %, 16 V, X7R, TP, 1005, -
2	2203-000254	C502	C-CERAMIC, CHIP 10 NF, 10 %, 16 V, X7R, TP, 1005, -
2	2203-000254	C503	C-CERAMIC, CHIP 10 NF, 10 %, 16 V, X7R, TP, 1005, -
2	1405-001082	C504	VARISTOR 5.6 V, 20A, 1 x 0.5 x 0.6 mm, TP
2	1405-001082	C505	VARISTOR 5.6 V, 20A, 1 x 0.5 x 0.6 mm, TP
2	2404-001151	C506	C-TA, CHIP 33 UF, 20 %, 6.3 V, LZ, TP, 3216
2	2203-000233	C507	C-CERAMIC, CHIP 0.1 NF, 5 %, 50 V, NP0, TP, 1005
2	2203-005061	C508	C-CERAMIC, CHIP 100 NF, +80-20 %, 16 V, Y5 V, TP, 1005
2	2404-001151	C509	C-TA, CHIP 33 UF, 20 %, 6.3 V, LZ, TP, 3216
2	2203-005061	C510	C-CERAMIC, CHIP 100 NF, +80-20 %, 16 V, Y5 V, TP, 1005
2	2203-000438	C511	C-CERAMIC, CHIP 1 NF, 10 %, 50 V, X7R, TP, 1005, -

Level	SEC CODE	Design LOC	DESCRIPTIONS
2	2203-005393	C512	C-CERAMIC, CHIP 0.005 NF, 0.1 PF, 50 V, NP0, TP, 1005
2	2203-000679	C513	C-CERAMIC, CHIP 0.027 NF, 5 %, 50 V, NP0, TP, 1005
2	2203-000679	C514	C-CERAMIC, CHIP 0.027 NF, 5 %, 50 V, NP0, TP, 1005
2	2203-005061	C515	C-CERAMIC, CHIP 100 NF, +80-20 %, 16 V, Y5 V, TP, 1005
2	2203-000254	C516	C-CERAMIC, CHIP 10 NF, 10 %, 16 V, X7R, TP, 1005, -
2	2203-005061	C517	C-CERAMIC, CHIP 100 NF, +80-20 %, 16 V, Y5 V, TP, 1005
2	2203-005061	C518	C-CERAMIC, CHIP 100 NF, +80-20 %, 16 V, Y5 V, TP, 1005
2	2203-000233	C519	C-CERAMIC, CHIP 0.1 NF, 5 %, 50 V, NP0, TP, 1005
2	2203-001724	C520	C-CERAMIC, CHIP 4700 NF, +80-20 %, 16 V, Y5 V, TP, 3216
2	2203-000233	C521	C-CERAMIC, CHIP 0.1 NF, 5 %, 50 V, NP0, TP, 1005
2	2203-000233	C522	C-CERAMIC, CHIP 0.1 NF, 5 %, 50 V, NP0, TP, 1005
2	2203-005065	C523	C-CERAMIC, CHIP 1000 NF, +80-20 %, 10 V, Y5 V, TP, 1608
2	2203-005061	C524	C-CERAMIC, CHIP 100 NF, +80-20 %, 16 V, Y5 V, TP, 1005
2	2203-001724	C525	C-CERAMIC, CHIP 4700 NF, +80-20 %, 16 V, Y5 V, TP, 3216
2	2203-000233	C526	C-CERAMIC, CHIP 0.1 NF, 5 %, 50 V, NP0, TP, 1005
2	2203-001724	C527	C-CERAMIC, CHIP 4700 NF, +80-20 %, 16 V, Y5 V, TP, 3216
2	2203-005061	C528	C-CERAMIC, CHIP 100 NF, +80-20 %, 16 V, Y5 V, TP, 1005
2	2203-000233	C529	C-CERAMIC, CHIP 0.1 NF, 5 %, 50 V, NP0, TP, 1005
2	2203-001598	C530	C-CERAMIC, CHIP 2200 NF, +80-20 %, 16 V, Y5 V, TP, 2012
2	2203-005061	C531	C-CERAMIC, CHIP 100 NF, +80-20 %, 16 V, Y5 V, TP, 1005
2	2203-001598	C532	C-CERAMIC, CHIP 2200 NF, +80-20 %, 16 V, Y5 V, TP, 2012
2	2203-005065	C533	C-CERAMIC, CHIP 1000 NF, +80-20 %, 10 V, Y5 V, TP, 1608
2	2203-005061	C534	C-CERAMIC, CHIP 100 NF, +80-20 %, 16 V, Y5 V, TP, 1005
2	2203-000233	C535	C-CERAMIC, CHIP 0.1 NF, 5 %, 50 V, NP0, TP, 1005
2	2203-005065	C536	C-CERAMIC, CHIP 1000 NF, +80-20 %, 10 V, Y5 V, TP, 1608
2	2203-005061	C537	C-CERAMIC, CHIP 100 NF, +80-20 %, 16 V, Y5 V, TP, 1005
2	2203-005061	C538	C-CERAMIC, CHIP 100 NF, +80-20 %, 16 V, Y5 V, TP, 1005
2	2203-000233	C539	C-CERAMIC, CHIP 0.1 NF, 5 %, 50 V, NP0, TP, 1005
2	2203-000233	C540	C-CERAMIC, CHIP 0.1 NF, 5 %, 50 V, NP0, TP, 1005
2	2404-001105	C541	C-TA, CHIP 10 UF, 20 %, 6.3 V, GP, TP, 2012
2	2203-000254	C542	C-CERAMIC, CHIP 10 NF, 10 %, 16 V, X7R, TP, 1005, -
2	2203-005061	C549	C-CERAMIC, CHIP 100 NF, +80-20 %, 16 V, Y5 V, TP, 1005
2	2203-005481	C556	C-CERAMIC, CHIP 47 NF, 10 %, 10 V, X7R, TP, 1005, -
2	2203-000438	C566	C-CERAMIC, CHIP 1 NF, 10 %, 50 V, X7R, TP, 1005, -
2	2203-001432	C601	C-CERAMIC, CHIP 47 NF, +80-20 %, 16 V, Y5 V, TP, 1005
2	2203-002759	C602	C-CERAMIC, CHIP 15 NF, +80-20 %, 50 V, Y5 V, TP, 1005, -
2	2203-002759	C603	C-CERAMIC, CHIP 15 NF, +80-20 %, 50 V, Y5 V, TP, 1005, -
2	2404-001151	C604	C-TA, CHIP 33 UF, 20 %, 6.3 V, LZ, TP, 3216
2	2203-000278	C605	C-CERAMIC, CHIP 0.01 NF, 0.5 PF, 50 V, NP0, TP, 1005
2	2404-001105	C606	C-TA, CHIP 10 UF, 20 %, 6.3 V, GP, TP, 2012

Level	SEC CODE	Design LOC	DESCRIPTIONS
2	2203-005061	C607	C-CERAMIC, CHIP 100 NF, +80-20 %, 16 V, Y5 V, TP, 1005
2	2203-005061	C608	C-CERAMIC, CHIP 100 NF, +80-20 %, 16 V, Y5 V, TP, 1005
2	2203-000254	C609	C-CERAMIC, CHIP 10 NF, 10 %, 16 V, X7R, TP, 1005, -
2	2203-005061	C610	C-CERAMIC, CHIP 100 NF, +80-20 %, 16 V, Y5 V, TP, 1005
2	2203-005061	C611	C-CERAMIC, CHIP 100 NF, +80-20 %, 16 V, Y5 V, TP, 1005
2	2203-005061	C612	C-CERAMIC, CHIP 100 NF, +80-20 %, 16 V, Y5 V, TP, 1005
2	2203-005061	C613	C-CERAMIC, CHIP 100 NF, +80-20 %, 16 V, Y5 V, TP, 1005
2	2203-005061	C615	C-CERAMIC, CHIP 100 NF, +80-20 %, 16 V, Y5 V, TP, 1005
2	2203-000254	C616	C-CERAMIC, CHIP 10 NF, 10 %, 16 V, X7R, TP, 1005, -
2	2203-005061	C617	C-CERAMIC, CHIP 100 NF, +80-20 %, 16 V, Y5 V, TP, 1005
2	2203-005061	C618	C-CERAMIC, CHIP 100 NF, +80-20 %, 16 V, Y5 V, TP, 1005
2	2203-005061	C619	C-CERAMIC, CHIP 100 NF, +80-20 %, 16 V, Y5 V, TP, 1005
2	2203-000254	C620	C-CERAMIC, CHIP 10 NF, 10 %, 16 V, X7R, TP, 1005, -
2	2203-000254	C621	C-CERAMIC, CHIP 10 NF, 10 %, 16 V, X7R, TP, 1005, -
2	2203-000254	C622	C-CERAMIC, CHIP 10 NF, 10 %, 16 V, X7R, TP, 1005, -
2	2203-005061	C640	C-CERAMIC, CHIP 100 NF, +80-20 %, 16 V, Y5 V, TP, 1005
2	2203-005061	C641	C-CERAMIC, CHIP 100 NF, +80-20 %, 16 V, Y5 V, TP, 1005
2	2203-000254	C652	C-CERAMIC, CHIP 10 NF, 10 %, 16 V, X7R, TP, 1005, -
2	3710-001653	CN101	CONNECTOR-SOCKET 18P, 1R, 0.5 mm, SMD-A, AUF
2	3705-001239	CN302	CONNECTOR-COAXIAL -, JAC K, 50MOHM, 50 ohm, 0.3dB
2	3722-001530	CN303	JACK-PHONE 5P, 2.6PI, AUF, BLK, -
2	0407-000115	D160	DIODE-ARRAY DAN202U, 80 V, 100 MA, CA2-3, SC-70,
2	0405-001035	D201	DIODE-VARACTOR 1SV279, 15 V, 3 NA, USC, TP
2	0405-001035	D202	DIODE-VARACTOR 1SV279, 15 V, 3 NA, USC, TP
2	0405-001035	D302	DIODE-VARACTOR 1SV279, 15 V, 3 NA, USC, TP
2	0405-001035	D303	DIODE-VARACTOR 1SV279, 15 V, 3 NA, USC, TP
2	0409-001016	D350	DIODE-PIN BAR63-02 W, 50 V, 100 MA, SCD-80, TP
2	0409-001016	D351	DIODE-PIN BAR63-02 W, 50 V, 100 MA, SCD-80, TP
2	0407-001006	D601	DIODE-ARRAY DA221, 20 V, 100 MA, C2-3, EM3, TR
2	0407-001006	D602	DIODE-ARRAY DA221, 20 V, 100 MA, C2-3, EM3, TR
2	0407-000115	D603	DIODE-ARRAY DAN202U, 80 V, 100 MA, CA2-3, SC-70,
1	GH44-00250A	DTC	CHARGER-SCHA212 ISRL DCH025EBE, SCH-A212, AC/DC, 300 MA, 4.2 V,
2	3301-001342	F100	CORE-FERRITE BEAD AB, 1.5 KOHM, 1 X 0.5 X 0.5 MM, 100 MA, TP, M, 1.4 OHM
2	3301-001342	F101	CORE-FERRITE BEAD AB, 1.5 KOHM, 1 X 0.5 X 0.5 MM, 100 MA, TP, M, 1.4 OHM
2	2901-001204	F102	FILTER-EMI SMD 25 V, -, -, 100 PF, 3.2 x 1.6 x 0.94 mm, TP
2	2901-001204	F103	FILTER-EMI SMD 25 V, -, -, 100 PF, 3.2 x 1.6 x 0.94 mm, TP
2	2901-001204	F104	FILTER-EMI SMD 25 V, -, -, 100 PF, 3.2 x 1.6 x 0.94 mm, TP
2	2904-001171	F201	FILTER-SAW 836.5MHz, 25MHz, +12.5MHz/2dB, TP, +12.5MHz/3.5dB
2	2904-001236	F301	FILTER-SAW 85.38MHz, -, 0.8, TP, 9.4dB, -
2	2909-001122	F302	FILTER-DUPLE X ER 881.5MHz, 836.5MHz, 4/2.5dB, TP, 824-849MHz/50dB,

Level	SEC CODE	Design LOC	DESCRIPTIONS
2	2904-001173	F303	FILTER-SAW 881.5MHZ, 25MHZ, +-12.5MHZ/2dB, TP, +-12.5MHZ/3.5dB, DC-
2	4709-001242	F401	COUPLER-DIRECTION 925-960MHZ, 10+-1.5DB, 23DB, 2 X 1.25 X 1 MM, TP
2	GH59-00341A	FPCB	UNIT-SCHA212 KEYPAD SCH-A212, KBSCHA212, -, KEY PAD ASS'Y, -, -, -,
2	GH59-00343A	FPCB	UNIT-SCHA212 CONNECTOR SCH-A212, KBSCHA212C, -, CONNECTOR
2	3710-001585	J101	CONNECTOR-SOCKET 20P, 2R, 0.5 mm, SMD-S, AUF
2	3710-001585	J102	CONNECTOR-SOCKET 20P, 2R, 0.5 mm, SMD-S, AUF
2	3301-001120	L201	CORE-FERRITE BEAD AB, 30 ohm, 2 x 1.25 x 0.85 mm, 3000 MA, TP,
2	3301-001105	L202	CORE-FERRITE AB, 1.6 x 0.8 x 0.8 mm, -, -
2	2703-001723	L204	INDUCTOR-SMD 33 NH, 5 %, 1.0 x 0.5 x 0.5 mm
2	2703-001723	L205	INDUCTOR-SMD 33 NH, 5 %, 1.0 x 0.5 x 0.5 mm
2	2703-001786	L206	INDUCTOR-SMD 10 NH, 5 %, 1.0 X 0.5 X 0.5 MM
2	2703-001543	L209	INDUCTOR-SMD 33 NH, 5 %, 1.8 x 1.12 x 1.02 mm
2	3301-001105	L210	CORE-FERRITE AB, 1.6 x 0.8 x 0.8 mm, -, -
2	3301-001105	L211	CORE-FERRITE AB, 1.6 x 0.8 x 0.8 mm, -, -
2	2703-001409	L302	INDUCTOR-SMD 12 NH, 10 %, 1 x 0.5 x 0.5 mm
2	2703-001126	L307	INDUCTOR-SMD 270 NH, 5 %, 2.29 x 1.73 x 1.52 mm
2	2703-001043	L311	INDUCTOR-SMD 180 NH, 5 %, 2.29 x 1.73 x 1.52 mm
2	3301-001105	L318	CORE-FERRITE AB, 1.6 x 0.8 x 0.8 mm, -, -
2	2703-001514	L319	INDUCTOR-SMD 68 NH, 5 %, 1.8 x 1.12 x 1.02 mm
2	2007-007771	L320	R-CHIP 0 OHM, 5 %, 1/16 W, DA, TP, 1005
2	3301-001105	L321	CORE-FERRITE AB, 1.6 x 0.8 x 0.8 mm, -, -
2	3301-001105	L322	CORE-FERRITE AB, 1.6 x 0.8 x 0.8 mm, -, -
2	2703-000295	L323	INDUCTOR-SMD 220 NH, 10 %, 0.8 x 1.6 x 0.8 mm
2	2703-001595	L324	INDUCTOR-SMD 47 NH, 5 %, 1.0 x 0.5 x 0.5 mm
2	2703-001790	L325	INDUCTOR-SMD 3.3 NH, 0.3 NH, 1.0 X 0.5 X 0.5 MM
2	2703-001728	L326	INDUCTOR-SMD 1.5 NH, 0.3 NH, 1 x 0.5 x 0.5 mm
2	2703-001952	L327	INDUCTOR-SMD 8.2 NH, 5 %, 1.0 x 0.5 x 0.5 mm
2	2703-001722	L328	INDUCTOR-SMD 18 NH, 5 %, 1.0 x 0.5 x 0.5 mm
2	2703-001722	L329	INDUCTOR-SMD 18 NH, 5 %, 1.0 x 0.5 x 0.5 mm
2	2703-000175	L331	INDUCTOR-SMD 270 NH, 10 %, 0.8 x 1.6 x 0.8 mm
2	2703-001409	L332	INDUCTOR-SMD 12 NH, 10 %, 1 x 0.5 x 0.5 mm
2	3301-001105	L402	CORE-FERRITE AB, 1.6 x 0.8 x 0.8 mm, -, -
2	3301-001105	L403	CORE-FERRITE AB, 1.6 x 0.8 x 0.8 mm, -, -
2	2703-001733	L405	INDUCTOR-SMD 8.2 NH, 5 %, 1 x 0.5 x 0.5 mm
2	2703-001708	L406	INDUCTOR-SMD 5.6 NH, 10 %, 1.0 x 0.5 x 0.5 mm
2	2703-001595	L410	INDUCTOR-SMD 47 NH, 5 %, 1.0 x 0.5 x 0.5 mm
2	2703-001595	L411	INDUCTOR-SMD 47 NH, 5 %, 1.0 x 0.5 x 0.5 mm
2	GH07-00120A	LCD	LCD-ASSY SCHA212 UG-12P10-FGHT X-E, SCH-A212, 128 X 96, 37.6 X 51.9 X 2.85
2	2809-001247	OSC401	OSCILLATOR-VCTC X O 19.68MHZ, -, 10 KOHM/10 PF, TP, 2.8 V, 1.5 MA
2	2806-001200	OSC402	OSCILLATOR-VCO 967MHZ, -, 50, TP, 3 V, 8.5 MA

Level	SEC CODE	Design LOC	DESCRIPTIONS
2	GH41-00172A	PCB	PCB-SCHA212 SCH-A212, FR-4, 6L, -, 0.8T, 118 X 155 MM, -, -, -, -
2	0501-002202	Q101	TR-S MALL SIGNAL MMBT2222AWT1, NPN, 150 MW, SOT-323
2	0501-002202	Q102	TR-S MALL SIGNAL MMBT2222AWT1, NPN, 150 MW, SOT-323
2	0504-000167	Q160	TR-DIGITAL RN1102, NPN, 100 MW, 10K/10 K, SSM, TP
2	0501-000162	Q161	TR-S MALL SIGNAL 2SA1576, PNP, 200 MW, SOT-323, TP, 180-390
2	0501-000218	Q350	TR-S MALL SIGNAL 2SC4081, NPN, 200 MW, UMT, TP, 180-3
2	0504-000172	Q501	TR-DIGITAL RN2104, PNP, 100 MW, 47K/47 K, SSM, TP
2	0501-000225	Q502	TR-S MALL SIGNAL 2SC4617, NPN, 200 MW, EM3, TP, 120-5
2	0501-002202	Q503	TR-S MALL SIGNAL MMBT2222AWT1, NPN, 150 MW, SOT-323
2	0505-001165	Q505	FET-SILICON SI3443D V, P, -20 V, +-3.5 MA, 65MOHM
2	0501-000225	Q507	TR-S MALL SIGNAL 2SC4617, NPN, 200 MW, EM3, TP, 120-5
2	0504-000168	Q509	TR-DIGITAL RN1104, NPN, 100 MW, 47K/47 K, SSM, TP
2	0504-000168	Q529	TR-DIGITAL RN1104, NPN, 100 MW, 47K/47 K, SSM, TP
2	0501-002202	Q530	TR-S MALL SIGNAL MMBT2222AWT1, NPN, 150 MW, SOT-323
2	2007-000148	R101	R-CHIP 10 KOHM, 5 %, 1/16 W, DA, TP, 1005
2	2007-000143	R103	R-CHIP 4.7 KOHM, 5 %, 1/16 W, DA, TP, 1005
2	2007-000157	R104	R-CHIP 47 KOHM, 5 %, 1/16 W, DA, TP, 1005
2	2007-000758	R105	R-CHIP 330 KOHM, 5 %, 1/16 W, DA, TP, 1005
2	2007-007771	R106	R-CHIP 0 OHM, 5 %, 1/16 W, DA, TP, 1005
2	2007-000138	R108	R-CHIP 100 ohm, 5 %, 1/16 W, DA, TP, 1005
2	2007-000148	R109	R-CHIP 10 KOHM, 5 %, 1/16 W, DA, TP, 1005
2	2007-000153	R110	R-CHIP 22 KOHM, 5 %, 1/16 W, DA, TP, 1005
2	2007-000932	R111	R-CHIP 470 ohm, 5 %, 1/16 W, DA, TP, 1005
2	2007-000138	R115	R-CHIP 100 ohm, 5 %, 1/16 W, DA, TP, 1005
2	2007-000165	R117	R-CHIP 200 KOHM, 5 %, 1/16 W, DA, TP, 1005
2	2007-000165	R118	R-CHIP 200 KOHM, 5 %, 1/16 W, DA, TP, 1005
2	2007-000165	R122	R-CHIP 200 KOHM, 5 %, 1/16 W, DA, TP, 1005
2	2007-007771	R123	R-CHIP 0 OHM, 5 %, 1/16 W, DA, TP, 1005
2	2007-000157	R124	R-CHIP 47 KOHM, 5 %, 1/16 W, DA, TP, 1005
2	2007-000138	R125	R-CHIP 100 ohm, 5 %, 1/16 W, DA, TP, 1005
2	2007-000138	R126	R-CHIP 100 ohm, 5 %, 1/16 W, DA, TP, 1005
2	2007-001313	R127	R-CHIP 330 ohm, 5 %, 1/16 W, DA, TP, 1005
2	2007-000138	R128	R-CHIP 100 ohm, 5 %, 1/16 W, DA, TP, 1005
2	2007-000138	R129	R-CHIP 100 ohm, 5 %, 1/16 W, DA, TP, 1005
2	2007-000162	R130	R-CHIP 100 KOHM, 5 %, 1/16 W, DA, TP, 1005
2	2007-001319	R131	R-CHIP 1.2 KOHM, 5 %, 1/16 W, DA, TP, 1005
2	2007-001313	R132	R-CHIP 330 ohm, 5 %, 1/16 W, DA, TP, 1005
2	2007-000165	R133	R-CHIP 200 KOHM, 5 %, 1/16 W, DA, TP, 1005
2	2007-000140	R134	R-CHIP 1 KOHM, 5 %, 1/16 W, DA, TP, 1005
2	2007-000148	R136	R-CHIP 10 KOHM, 5 %, 1/16 W, DA, TP, 1005

Level	SEC CODE	Design LOC	DESCRIPTIONS
2	2007-000140	R137	R-CHIP 1 KOHM, 5 %, 1/16 W, DA, TP, 1005
2	2007-000148	R138	R-CHIP 10 KOHM, 5 %, 1/16 W, DA, TP, 1005
2	2007-000148	R139	R-CHIP 10 KOHM, 5 %, 1/16 W, DA, TP, 1005
2	2007-000140	R140	R-CHIP 1 KOHM, 5 %, 1/16 W, DA, TP, 1005
2	2007-000140	R141	R-CHIP 1 KOHM, 5 %, 1/16 w, DA, TP, 1005
2	2007-000140	R147	R-CHIP 1 KOHM, 5 %, 1/16 w, DA, TP, 1005
2	2007-000148	R149	R-CHIP 10 KOHM, 5 %, 1/16 w, DA, TP, 1005
2	2007-000148	R160	R-CHIP 10 KOHM, 5 %, 1/16 w, DA, TP, 1005
2	2007-000137	R161	R-CHIP 2 KOHM, 5 %, 1/16 w, DA, TP, 1005
2	2007-007771	R166	R-CHIP 0 OHM, 5 %, 1/16 w, DA, TP, 1005
2	2007-007771	R167	R-CHIP 0 OHM, 5 %, 1/16 w, DA, TP, 1005
2	2007-000157	R169	R-CHIP 47 KOHM, 5 %, 1/16 w, DA, TP, 1005
2	2007-000138	R170	R-CHIP 100 ohm, 5 %, 1/16 w, DA, TP, 1005
2	2007-000138	R171	R-CHIP 100 ohm, 5 %, 1/16 w, DA, TP, 1005
2	2007-007771	R172	R-CHIP 0 OHM, 5 %, 1/16 w, DA, TP, 1005
2	2007-007771	R175	R-CHIP 0 OHM, 5 %, 1/16 w, DA, TP, 1005
2	2703-001178	R201	INDUCTOR-SMD 3.3 NH, 0.3 NH, 1 x 0.5 x 0.5 mm
2	2007-000140	R202	R-CHIP 1 KOHM, 5 %, 1/16 w, DA, TP, 1005
2	2007-001311	R203	R-CHIP 270 ohm, 5 %, 1/16 w, DA, TP, 1005
2	2007-000162	R204	R-CHIP 100 KOHM, 5 %, 1/16 w, DA, TP, 1005
2	2007-000162	R205	R-CHIP 100 KOHM, 5 %, 1/16 w, DA, TP, 1005
2	2007-000148	R206	R-CHIP 10 KOHM, 5 %, 1/16 w, DA, TP, 1005
2	2007-000148	R209	R-CHIP 10 KOHM, 5 %, 1/16 w, DA, TP, 1005
2	2007-000149	R210	R-CHIP 12 KOHM, 5 %, 1/16 w, DA, TP, 1005
2	2007-007771	R211	R-CHIP 0 OHM, 5 %, 1/16 w, DA, TP, 1005
2	2007-007771	R213	R-CHIP 0 OHM, 5 %, 1/16 w, DA, TP, 1005
2	2007-001320	R214	R-CHIP 1.8 KOHM, 5 %, 1/16 w, DA, TP, 1005
2	2007-000148	R215	R-CHIP 10 KOHM, 5 %, 1/16 w, DA, TP, 1005
2	2007-000138	R216	R-CHIP 100 ohm, 5 %, 1/16 w, DA, TP, 1005
2	2007-007771	R217	R-CHIP 0 OHM, 5 %, 1/16 w, DA, TP, 1005
2	2007-001284	R218	R-CHIP 4.7 ohm, 5 %, 1/16 w, DA, TP, 1005
2	2007-001284	R219	R-CHIP 4.7 ohm, 5 %, 1/16 w, DA, TP, 1005
2	2703-001949	R220	INDUCTOR-SMD 4.7 NH, 10 %, 1.0 x 0.5 x 0.5 mm
2	2007-001319	R221	R-CHIP 1.2 KOHM, 5 %, 1/16 w, DA, TP, 1005
2	2007-007771	R311	R-CHIP 0 OHM, 5 %, 1/16 w, DA, TP, 1005
2	2007-000140	R312	R-CHIP 1 KOHM, 5 %, 1/16 w, DA, TP, 1005
2	2007-000775	R313	R-CHIP 33 KOHM, 5 %, 1/16 w, DA, TP, 1005
2	2007-000168	R314	R-CHIP 470 KOHM, 5 %, 1/16 w, DA, TP, 1005
2	2007-000148	R316	R-CHIP 10 KOHM, 5 %, 1/16 w, DA, TP, 1005
2	2007-000148	R317	R-CHIP 10 KOHM, 5 %, 1/16 w, DA, TP, 1005

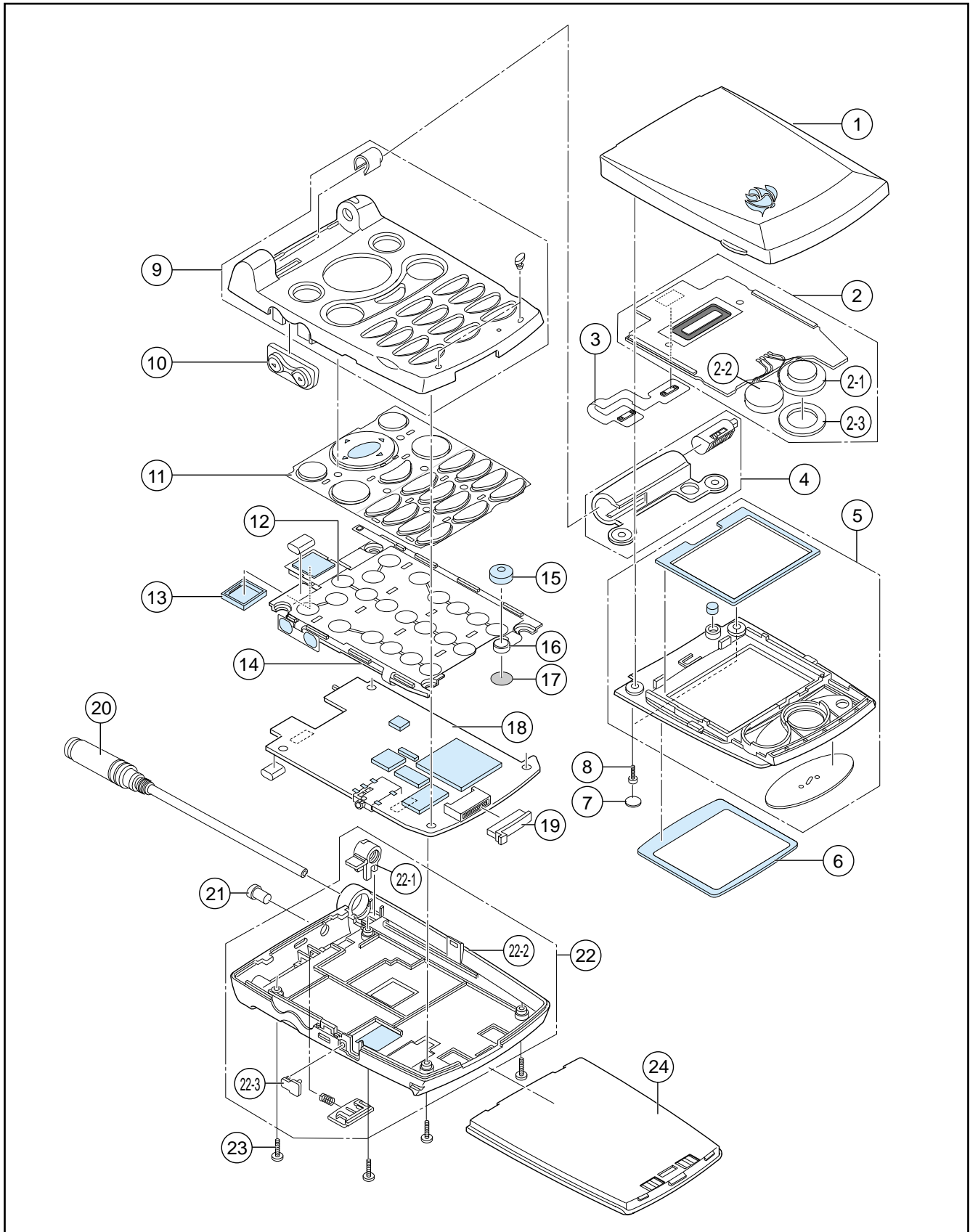
Level	SEC CODE	Design LOC	DESCRIPTIONS
2	2007-007771	R318	R-CHIP 0 OHM, 5 %, 1/16 w, DA, TP, 1005
2	2007-001317	R319	R-CHIP 910 ohm, 5 %, 1/16 w, DA, TP, 1005
2	2007-000140	R330	R-CHIP 1 KOHM, 5 %, 1/16 w, DA, TP, 1005
2	2007-000140	R331	R-CHIP 1 KOHM, 5 %, 1/16 w, DA, TP, 1005
2	2007-000172	R370	R-CHIP 10 ohm, 5 %, 1/16 w, DA, TP, 1005
2	2007-000172	R371	R-CHIP 10 ohm, 5 %, 1/16 w, DA, TP, 1005
2	2007-007137	R372	R-CHIP 1.2 KOHM, 1 %, 1/16 w, DA, TP, 1005
2	2007-000172	R373	R-CHIP 10 ohm, 5 %, 1/16 w, DA, TP, 1005
2	2007-000140	R374	R-CHIP 1 KOHM, 5 %, 1/16 w, DA, TP, 1005
2	2007-007771	R375	R-CHIP 0 OHM, 5 %, 1/16 w, DA, TP, 1005
2	2007-000172	R376	R-CHIP 10 ohm, 5 %, 1/16 w, DA, TP, 1005
2	2007-000932	R377	R-CHIP 470 ohm, 5 %, 1/16 w, DA, TP, 1005
2	2007-007771	R404	R-CHIP 0 OHM, 5 %, 1/16 w, DA, TP, 1005
2	2007-000172	R406	R-CHIP 10 ohm, 5 %, 1/16 w, DA, TP, 1005
2	2007-007771	R409	R-CHIP 0 OHM, 5 %, 1/16 w, DA, TP, 1005
2	2007-003006	R410	R-CHIP 16 OHM, 5 %, 1/16 w, DA, TP, 1005
2	2007-007771	R411	R-CHIP 0 OHM, 5 %, 1/16 w, DA, TP, 1005
2	2007-000172	R412	R-CHIP 10 ohm, 5 %, 1/16 w, DA, TP, 1005
2	2007-000141	R414	R-CHIP 2.2 KOHM, 5 %, 1/16 w, DA, TP, 1005
2	2007-000148	R415	R-CHIP 10 KOHM, 5 %, 1/16 w, DA, TP, 1005
2	2007-000172	R416	R-CHIP 10 ohm, 5 %, 1/16 w, DA, TP, 1005
2	2007-007771	R418	R-CHIP 0 OHM, 5 %, 1/16 w, DA, TP, 1005
2	2007-007771	R419	R-CHIP 0 OHM, 5 %, 1/16 w, DA, TP, 1005
2	2007-000172	R420	R-CHIP 10 ohm, 5 %, 1/16 w, DA, TP, 1005
2	2007-007771	R424	R-CHIP 0 OHM, 5 %, 1/16 w, DA, TP, 1005
2	2007-000170	R425	R-CHIP 1MOHM, 5 %, 1/16 w, DA, TP, 1005
2	2007-000170	R426	R-CHIP 1MOHM, 5 %, 1/16 w, DA, TP, 1005
2	1404-001040	R501	THERMISTOR-NTC 10 KOHM, 5 %, 3650 K, -, TP
2	2007-000142	R502	R-CHIP 2.7 KOHM, 5 %, 1/16 w, DA, TP, 1005
2	2007-000147	R503	R-CHIP 8.2 KOHM, 5 %, 1/16 w, DA, TP, 1005
2	2007-000143	R504	R-CHIP 4.7 KOHM, 5 %, 1/16 w, DA, TP, 1005
2	2007-000140	R506	R-CHIP 1 KOHM, 5 %, 1/16 w, DA, TP, 1005
2	2007-000153	R507	R-CHIP 22 KOHM, 5 %, 1/16 w, DA, TP, 1005
2	2007-000140	R508	R-CHIP 1 KOHM, 5 %, 1/16 w, DA, TP, 1005
2	2007-001325	R509	R-CHIP 3.3 KOHM, 5 %, 1/16 w, DA, TP, 1005
2	2007-001294	R510	R-CHIP 36 ohm, 5 %, 1/16 w, DA, TP, 1005
2	2007-001294	R511	R-CHIP 36 ohm, 5 %, 1/16 w, DA, TP, 1005
2	2007-001294	R512	R-CHIP 36 ohm, 5 %, 1/16 w, DA, TP, 1005
2	2007-007771	R513	R-CHIP 0 OHM, 5 %, 1/16 w, DA, TP, 1005
2	2007-007771	R514	R-CHIP 0 OHM, 5 %, 1/16 w, DA, TP, 1005

Level	SEC CODE	Design LOC	DESCRIPTIONS
2	2007-000148	R515	R-CHIP 10 KOHM, 5 %, 1/16 w, DA, TP, 1005
2	2007-007771	R521	R-CHIP 0 OHM, 5 %, 1/16 w, DA, TP, 1005
2	2007-007771	R524	R-CHIP 0 OHM, 5 %, 1/16 w, DA, TP, 1005
2	2007-000305	R528	R-CHIP 10MOHM, 5 %, 1/16 w, DA, TP, 1608
2	2007-007771	R529	R-CHIP 0 OHM, 5 %, 1/16 w, DA, TP, 1005
2	2007-007771	R531	R-CHIP 0 OHM, 5 %, 1/16 w, DA, TP, 1005
2	2007-007771	R535	R-CHIP 0 OHM, 5 %, 1/16 w, DA, TP, 1005
2	2007-000146	R536	R-CHIP 6.8 KOHM, 5 %, 1/16 w, DA, TP, 1005
2	2007-000148	R537	R-CHIP 10 KOHM, 5 %, 1/16 w, DA, TP, 1005
2	2007-000162	R539	R-CHIP 100 KOHM, 5 %, 1/16 w, DA, TP, 1005
2	2007-000162	R540	R-CHIP 100 KOHM, 5 %, 1/16 w, DA, TP, 1005
2	2007-000162	R541	R-CHIP 100 KOHM, 5 %, 1/16 w, DA, TP, 1005
2	2007-000143	R542	R-CHIP 4.7 KOHM, 5 %, 1/16 w, DA, TP, 1005
2	2007-000153	R543	R-CHIP 22 KOHM, 5 %, 1/16 w, DA, TP, 1005
2	2007-000162	R544	R-CHIP 100 KOHM, 5 %, 1/16 w, DA, TP, 1005
2	2007-001308	R554	R-CHIP 200 ohm, 5 %, 1/16 w, DA, TP, 1005
2	3301-001342	R555	CORE-FERRITE BEAD AB, 1.5 KOHM, 1 X 0.5 X 0.5 MM, 100 MA, TP, M, 1.4 OHM
2	2203-000254	R556	C-CERAMIC, CHIP 10 NF, 10 %, 16 V, X7R, TP, 1005, -
2	2007-000165	R603	R-CHIP 200 KOHM, 5 %, 1/16 w, DA, TP, 1005
2	2007-000162	R604	R-CHIP 100 KOHM, 5 %, 1/16 w, DA, TP, 1005
2	2007-000162	R605	R-CHIP 100 KOHM, 5 %, 1/16 w, DA, TP, 1005
2	2007-000143	R606	R-CHIP 4.7 KOHM, 5 %, 1/16 w, DA, TP, 1005
2	2007-000141	R611	R-CHIP 2.2 KOHM, 5 %, 1/16 w, DA, TP, 1005
2	2007-000242	R612	R-CHIP 1.5 KOHM, 5 %, 1/16 w, DA, TP, 1005
2	2007-000140	R613	R-CHIP 1 KOHM, 5 %, 1/16 w, DA, TP, 1005
2	2007-001339	R614	R-CHIP 180 KOHM, 5 %, 1/16 w, DA, TP, 1005
2	2007-000148	R616	R-CHIP 10 KOHM, 5 %, 1/16 w, DA, TP, 1005
2	2007-000168	R617	R-CHIP 470 KOHM, 5 %, 1/16 w, DA, TP, 1005
2	2007-000148	R618	R-CHIP 10 KOHM, 5 %, 1/16 w, DA, TP, 1005
2	2007-001339	R619	R-CHIP 180 KOHM, 5 %, 1/16 w, DA, TP, 1005
2	2007-000137	R620	R-CHIP 2 KOHM, 5 %, 1/16 w, DA, TP, 1005
2	2007-000140	R622	R-CHIP 1 KOHM, 5 %, 1/16 w, DA, TP, 1005
2	2007-000831	R628	R-CHIP 39 KOHM, 5 %, 1/16 w, DA, TP, 1005
2	2007-000162	R631	R-CHIP 100 KOHM, 5 %, 1/16 w, DA, TP, 1005
2	2007-000162	R632	R-CHIP 100 KOHM, 5 %, 1/16 w, DA, TP, 1005
2	2007-000148	R636	R-CHIP 10 KOHM, 5 %, 1/16 w, DA, TP, 1005
2	2007-000161	R639	R-CHIP 82 KOHM, 5 %, 1/16 w, DA, TP, 1005
2	2007-001298	R643	R-CHIP 51 ohm, 5 %, 1/16 w, DA, TP, 1005
2	2007-000140	R644	R-CHIP 1 KOHM, 5 %, 1/16 w, DA, TP, 1005
2	2007-001313	R645	R-CHIP 330 ohm, 5 %, 1/16 w, DA, TP, 1005

Level	SEC CODE	Design LOC	DESCRIPTIONS
2	2007-001313	R646	R-CHIP 330 ohm, 5 %, 1/16 w, DA, TP, 1005
2	2007-001288	R647	R-CHIP 18 ohm, 5 %, 1/16 w, DA, TP, 1005
2	1106-001400	U101	IC-SRAM K6F4016U6E, 256K X 16BIT, TBGA, 48P, 6 X 7 MM, 70NS, 3 V, 10 %,
2	1109-001158	U103	IC-ETC. MEMORY 84VD22194, 4M x 8/2M x 16Bit, BGA, 73P, 457MIL, 90nS, 3 V, 10 %,
2	1103-001184	U106	IC-EEPROM 24C256, 32K x 8Bit, dBGA, 8P, 92MIL, -, 2.7 V, -, PLASTIC, -
2	1201-001491	U201	IC-POWER AMP 912, LCC, 7P, 226MIL, SINGLE, 28dB, PLASTIC, 4.2 V, -, -
2	0505-001376	U202	FET-SILICON FDC6329L, N/P, 8 V, 2.5A, -, 0.7W, SC-74
2	0505-001376	U203	FET-SILICON FDC6329L, N/P, 8 V, 2.5A, -, 0.7W, SC-74
2	1204-001682	U204	IC-IF/FM/AM RFT3100, BCC, 32P, 196MIL, PLASTIC, 3 V, -, -30to+85C, TP, -
2	1204-001581	U302	IC-IF CIRCUIT IFR3000-48BCCF-TR, BCC, 48P, -, PLASTIC, 3.5 V, -, -
2	1205-001943	U360	IC-DATA CO MM./GEN. RF2366TR7, SOT23-6, 6P, -, PLASTIC, 8 V, -, -
2	1205-001928	U361	IC-MIXER CMY212B, SOP, 8P, 63MIL, PLASTIC, 5 V, -, -55to+150C, TP, -
2	1209-001197	U402	IC-PLL LM X 2332LSLB, CSP, 20P, -, PLASTIC,
2	1201-001248	U404	IC-CASCODE AMP 0916, SOT-143, 4P, -, -, 2.7 V, -, 6Vd
2	1203-001967	U501	IC-POWER SUPERVISOR 1000, BGA, 64P, 315MIL, PLASTIC, 1.6/3.3 V, -, -
2	1202-000192	U601	IC-PHASE COMPARATOR 75W393, -, 8P, -, DUAL, 36 V, CMOS, PL
2	1205-002032	U609	IC-TRANSCEIVER MSM3100C, FBGA, 208P, -, PLASTIC, 3.7 V, -, -
2	3711-004642	VCON1	CONNECTOR-HEADER NOWALL, 2P, 1R, 2.5 mm, SMD-S, AUF
2	3711-004642	VCON2	CONNECTOR-HEADER NOWALL, 2P, 1R, 2.5 mm, SMD-S, AUF
2	2801-003856	X501	CRYSTAL-SMD 0.032768MHZ, 20PPM, 28-ACP, 7 PF, 65 KOHM, TP
2	0406-001051	ZD101	DIODE-TVS SMS05C, 6 V, 300W, SOT-23-6
2	0406-001051	ZD102	DIODE-TVS SMS05C, 6 V, 300W, SOT-23-6
2	0403-001387	ZD601	DIODE-ZENER UDZS5.1B, 4.89-5.2 V, 200mW, SOD-323, TP

2. SCH-A212 Exploded View and its Parts list

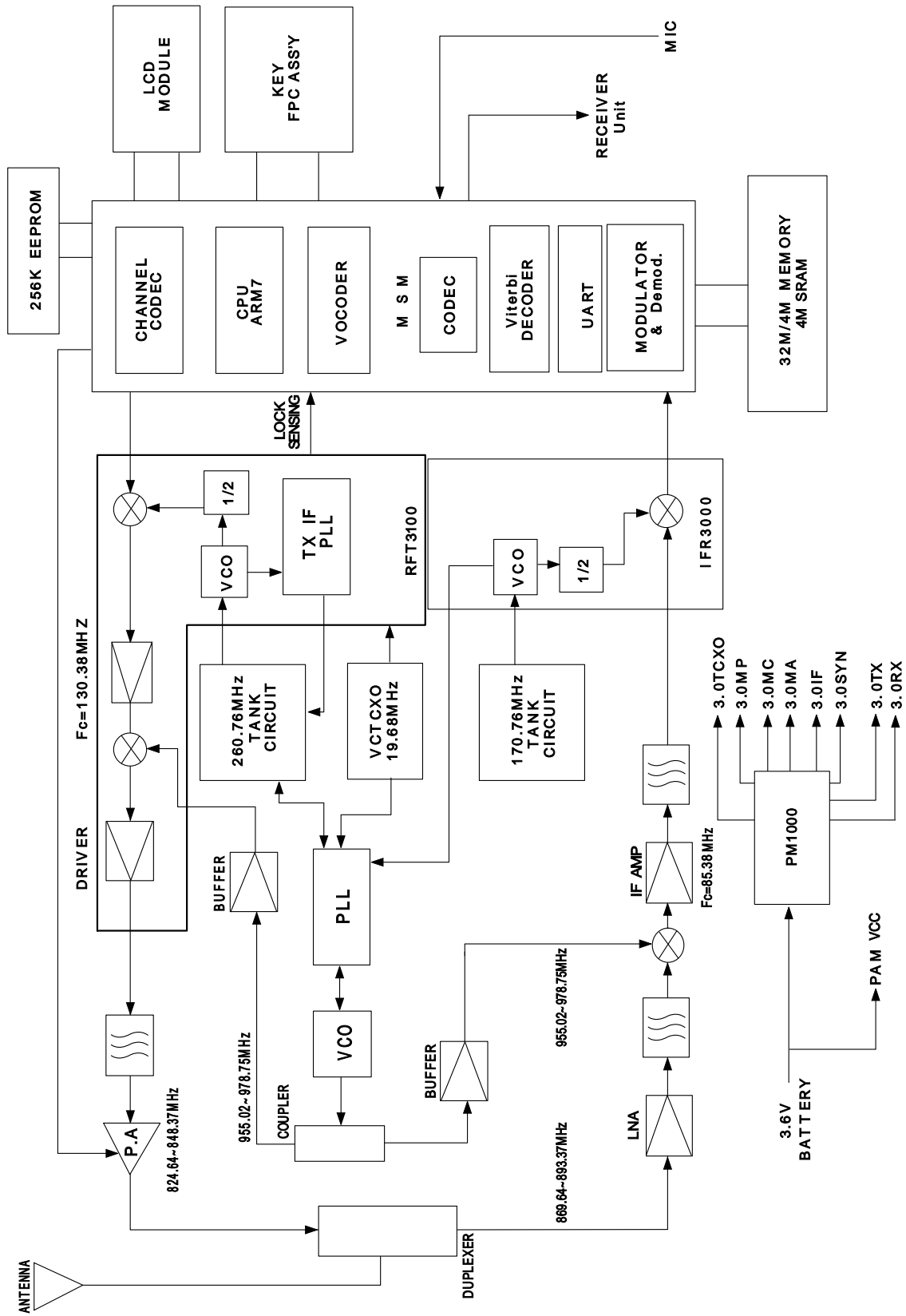
1. Cellular phone Exploded View



2. Cellular phone Parts list

Location No.	Description	SEC CODE		Remark		
		RED	WHITE			
1	MEC-FOLDER REAR	GH75-01561A	GH75-01561B		SA	
2	LCD ASS'Y	GH07-00120A	GH07-00120A		SA	
	2-1	SPEAKER ASS'Y	3001-001191	3001-001191		SA
	2-2	VIBRATOR ASS'Y	GH31-00030A	GH31-00030A		SA
	2-3	SPONGE ESD	GH74-01653A	GH74-01653A		SA
3	FPCB	GH59-00343A	GH59-00343A		SA	
4	HINGE HOLDER ASS'Y	GH75-01109A	GH75-01109A		SA	
5	MEC-FOLDER FRONT	GH72-02538A	GH72-02538B		SA	
6	WINDOW-LCD	GH72-01726B	GH72-01726B		SA	
7	HOLE SHEET	GH74-01013A	GH74-01013B		SA	
8	SCREW-MACHINE	6001-001155	6001-001155		SA	
9	FRONT FRONT	GH72-02540A	GH72-02540B		SA	
10	VOLUME ASS'Y	GH75-00948A	GH75-00948A		SA	
11	KEY PAD	GH72-04030A	GH72-04030A		SA	
12	KEY-PCB ASS'Y	GH59-00341A	GH59-00341A		SA	
13	BUZZER HOLDER	GH73-00482A	GH73-00482A		SA	
14	SHIELD COVER	GH70-00070A	GH70-00070A		SA	
15	MIC HOLDER	GH73-00483A	GH73-00483A		SA	
16	MIC	3003-001049	3003-001049		SA	
17	MIC DUMMY	GH73-00513A	GH73-00513A		SA	
18	PBA	GH92-00999A	GH92-00999A		SA	
19	COVER CONNECTOR	GH73-00487A	GH73-00487B	HUT	SA	
		GH73-01106A	GH73-01106B		SA	
20	ANTENNA	GH42-00169A	GH42-00169B		SA	
21	RF JACK HOLDER	GH73-00502A	GH73-00502B		SA	
22	REAR COVER ASS'Y	GH75-01137A	GH75-01137B		SA	
	22-1	ANTENNA BRAKET	GH70-00123A	GH70-00123A		SA
	22-2	REAR COVER	GH72-02539A	GH72-02539B		SA
	22-3	EAR JACK COVER	GH73-00486A	GH73-00486B		SA
23	SCREW-MACHINE	6001-000464	6001-000464		SA	
24	BATTERY	GH43-00405A	GH43-00405B	550mAh	SA	
		GH43-00406A	GH43-00406B	770mAh	SA	

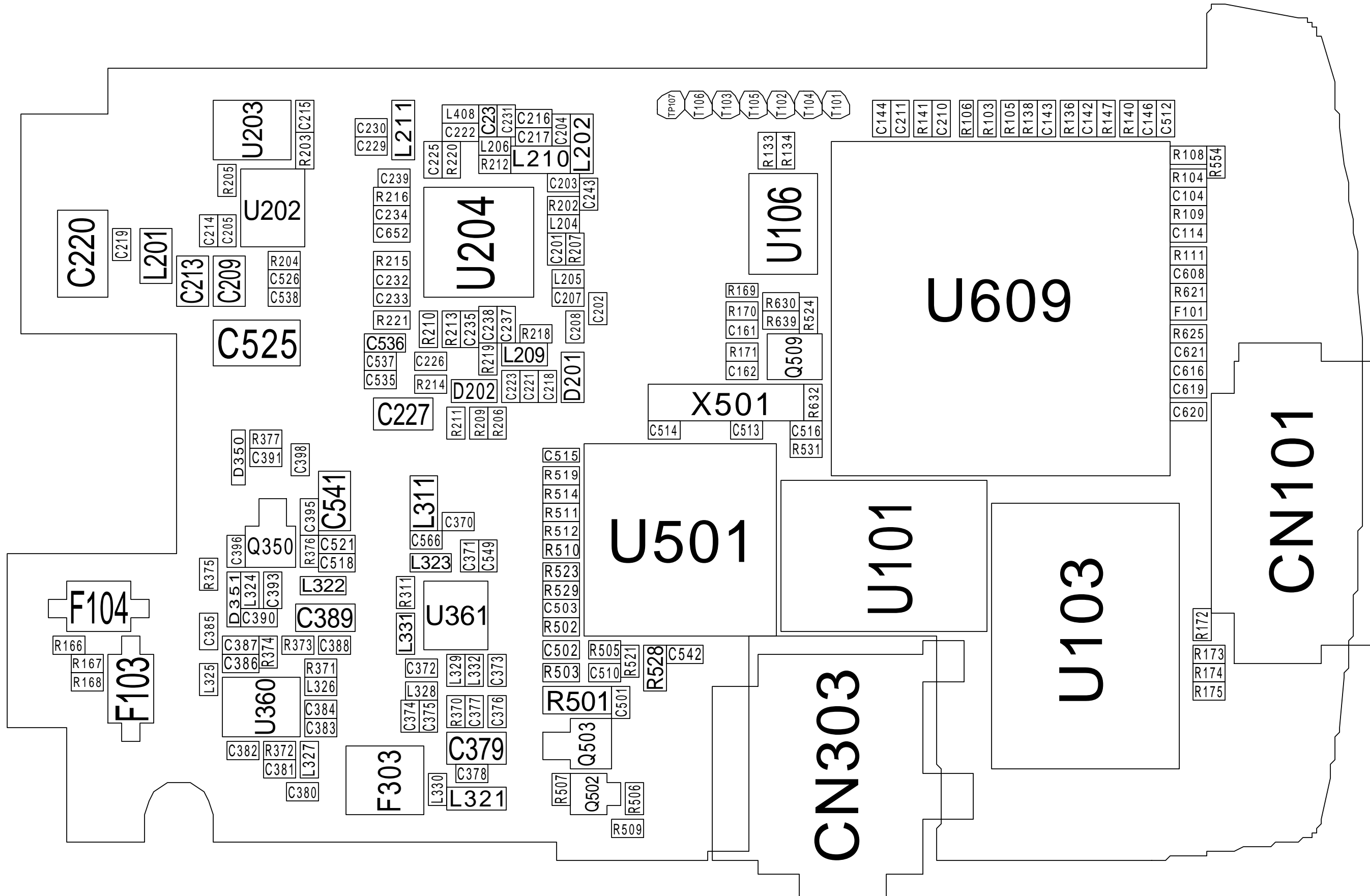
3. SCH-A212 Block Diagram



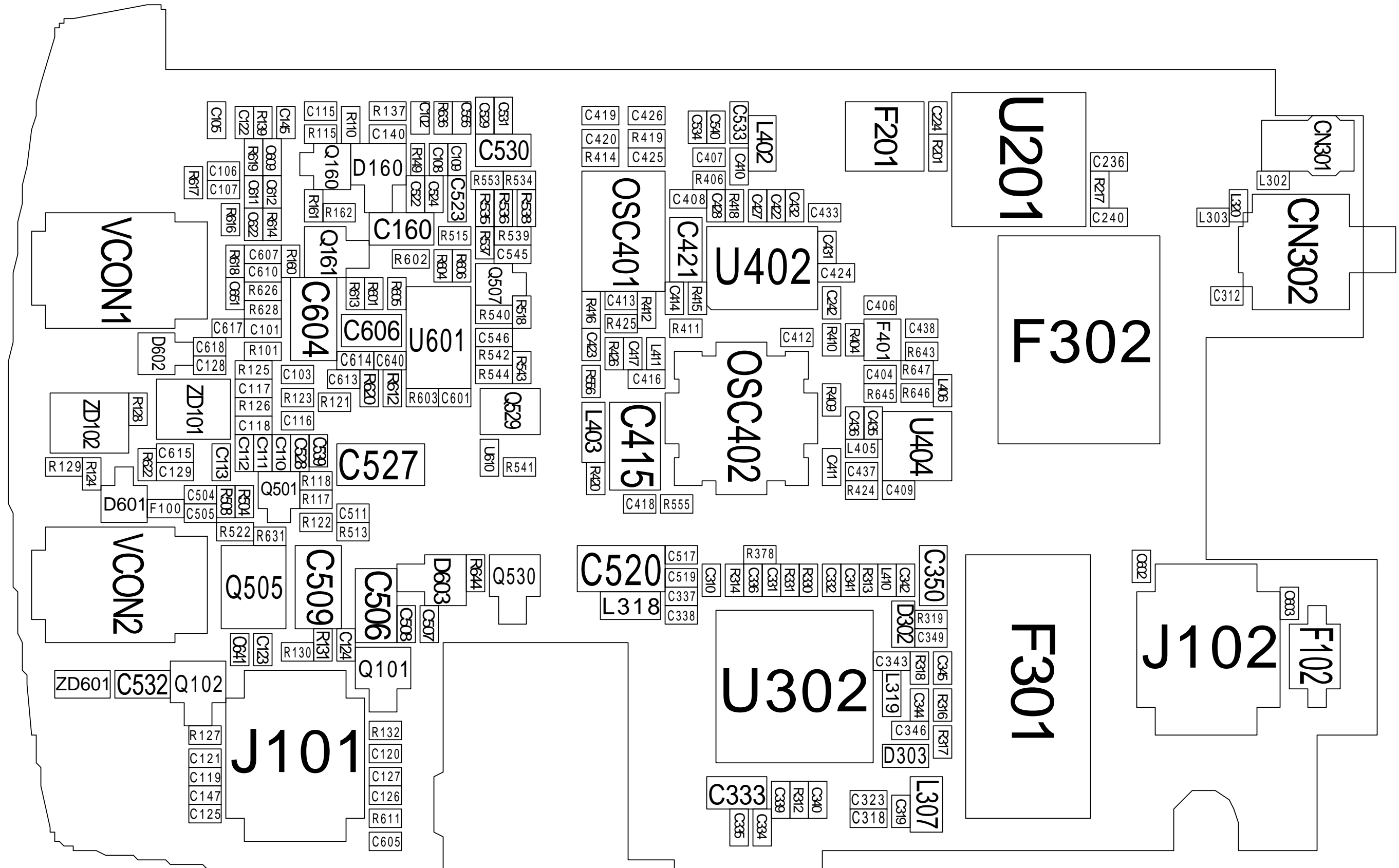


4. SCH-A212 PCB Diagrams

1. Main PCB Top Diagram

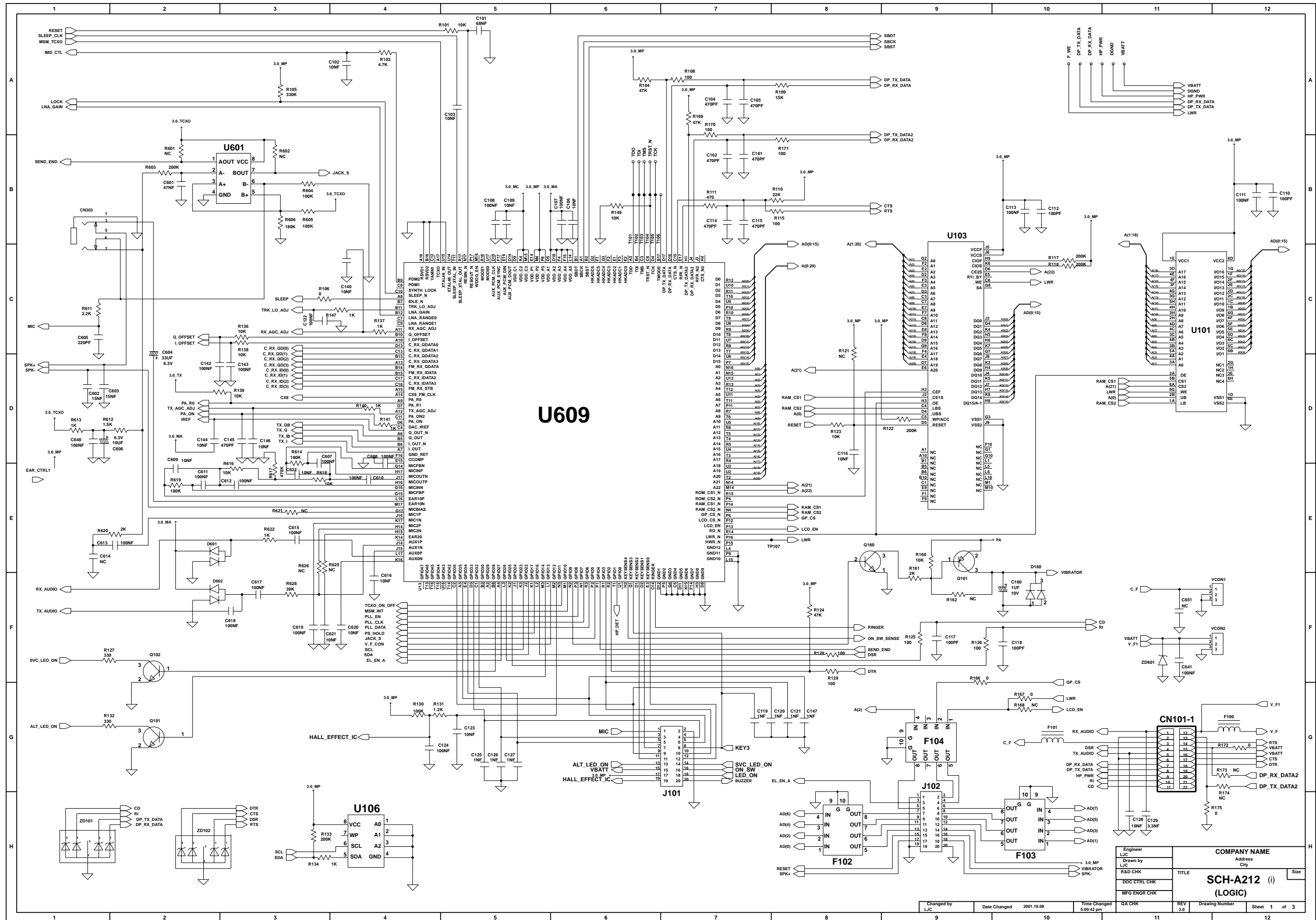


2. Main PCB Bottom Diagram

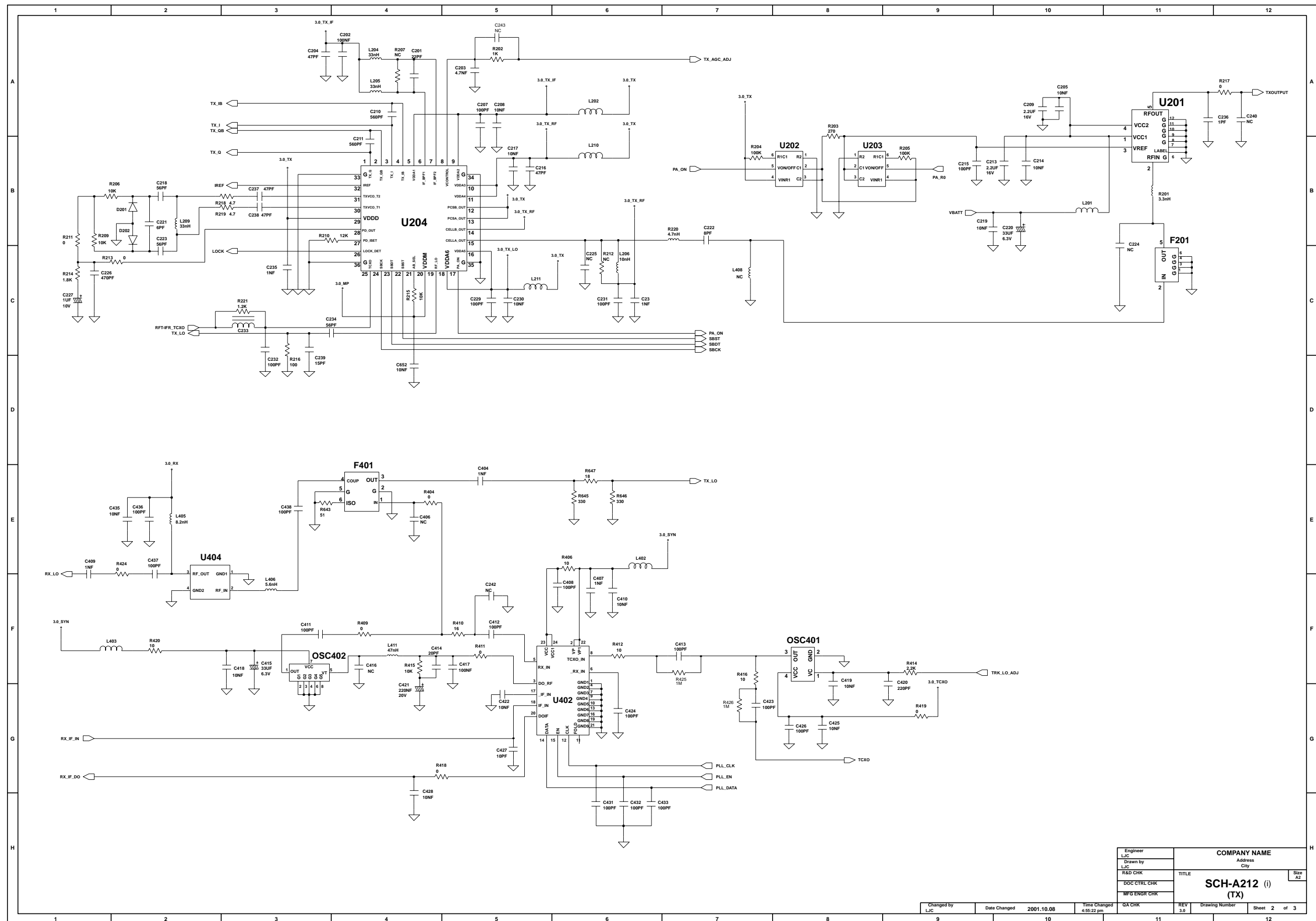


5. SCH-A212 Circuit Diagrams

1. LOGIC Circuit Diagram

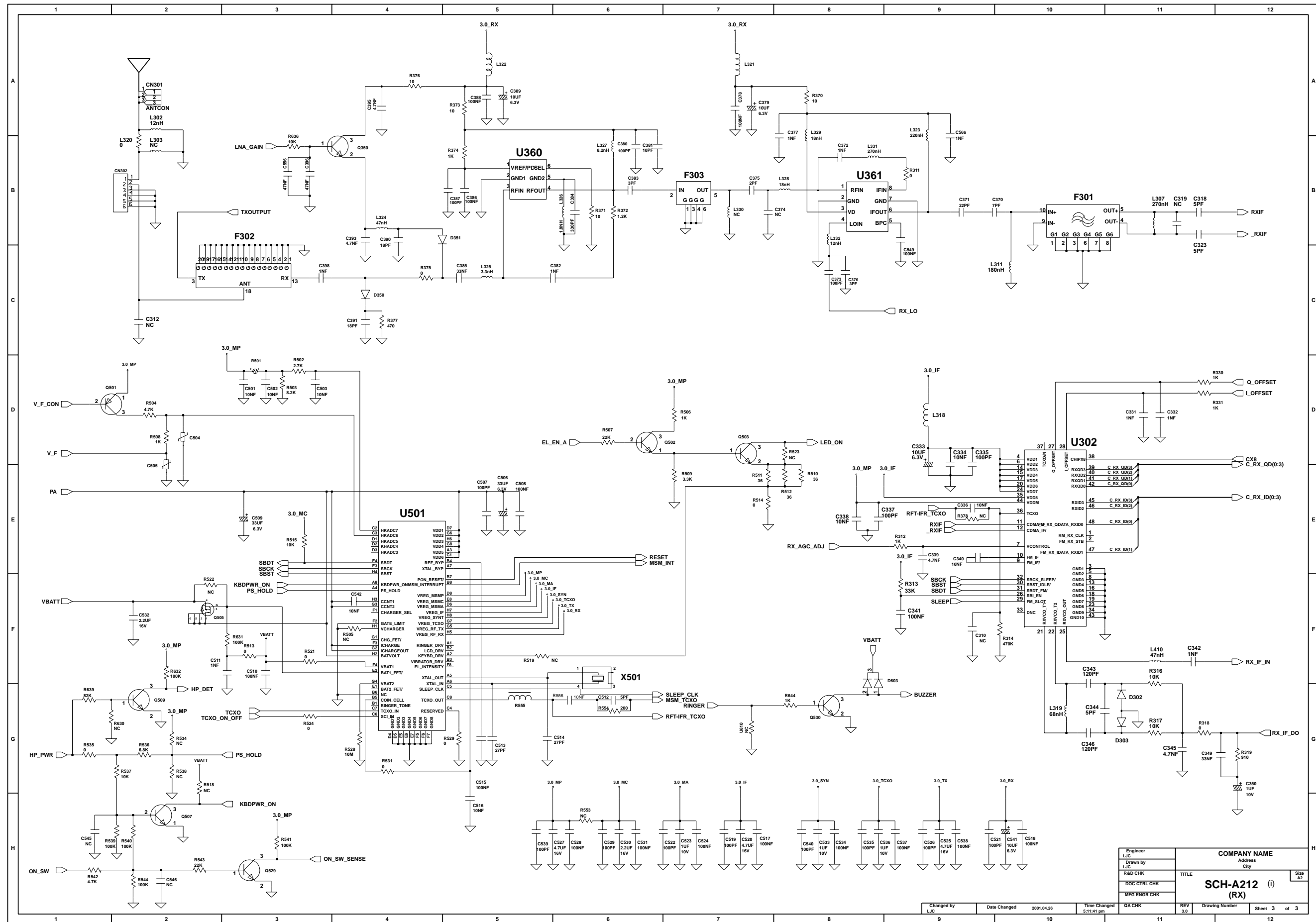


2. TX Circuit Diagram



Engineer	COMPANY NAME		
LIC	Address		
Drawn by	City		
R&D CHK	TITLE	Size	A2
DOC CTRL CHK	SCH-A212 (i)		
MFG ENGR CHK	(TX)		
QA CHK	REV	3.0	Drawing Number
Changed by	Date Changed	2001.10.08	Time Changed
LIC			4:55:22 pm
			Sheet 2 of 3

3. RX Circuit Diagram



Engineer LJC	COMPANY NAME Address City	
Drawn by LJC	TITLE SCH-A212 (I)	Size A2
R&D CHK		
DOC CTRL CHK		
MFG ENGR CHK		
Changed by LJC	Date Changed 2001.04.26	Time Changed 5:11:41 pm
QA CHK	REV 3.0	Drawing Number Sheet 3 of 3