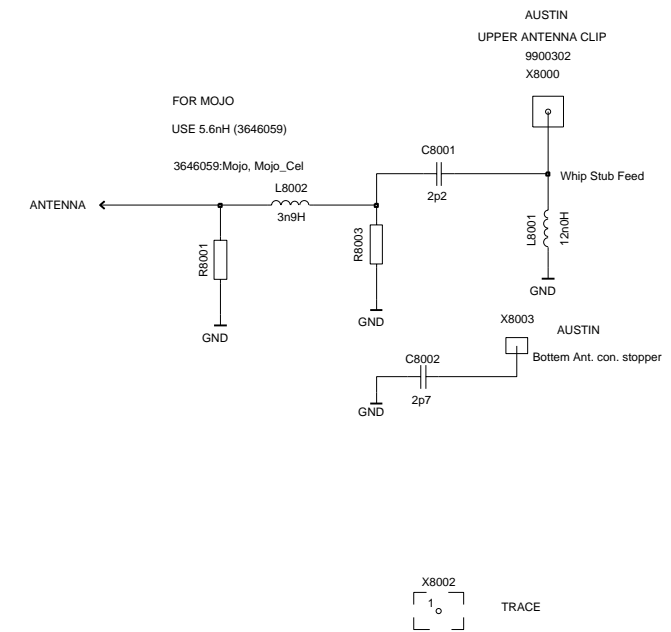
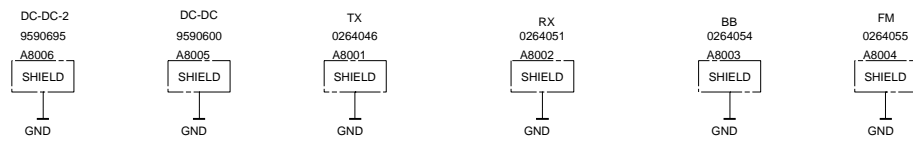
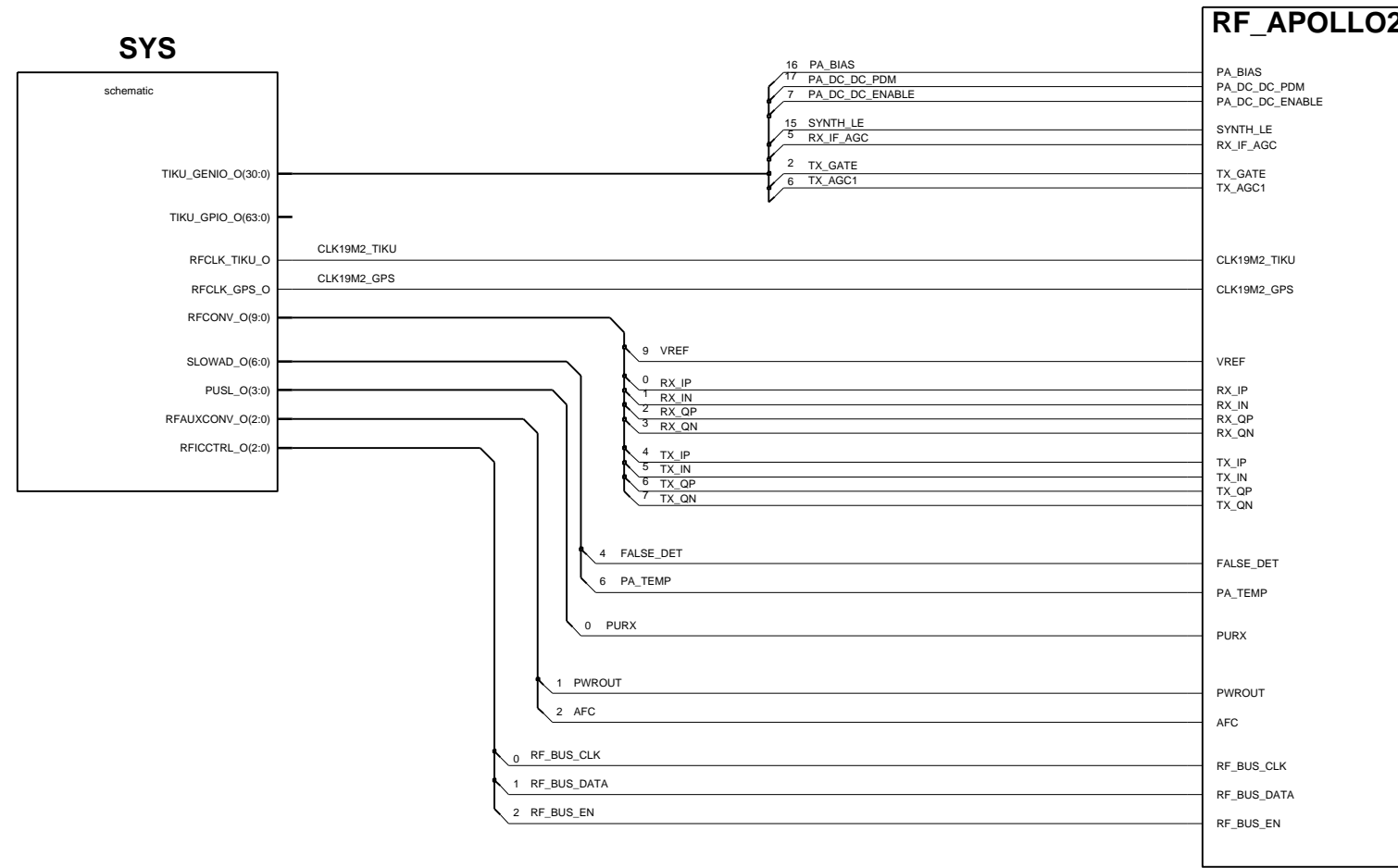


3155/3155i (RM-41), 3152 (RM-61) Schematics - Main PWB

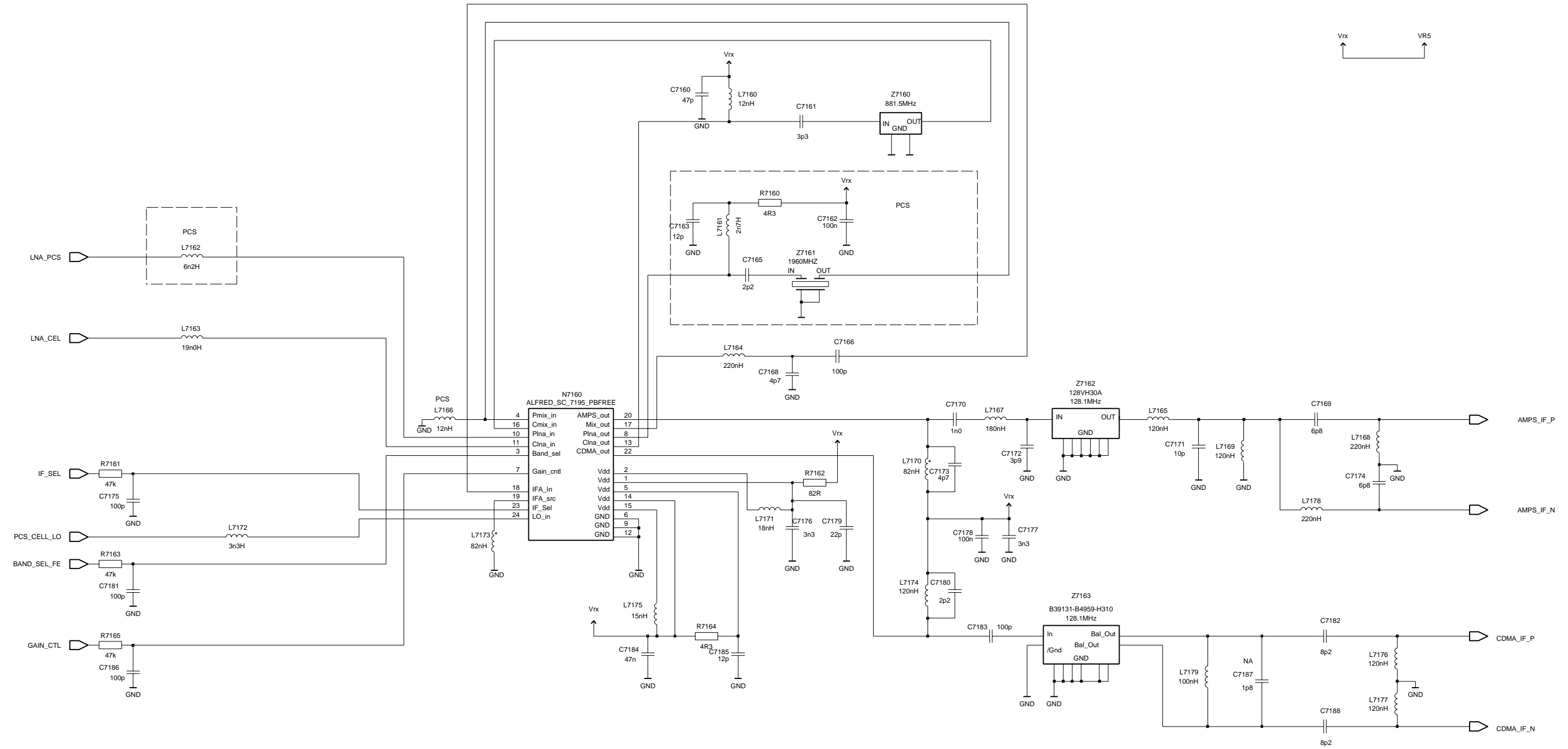
Top Level

Version 1, edit 247



Front End

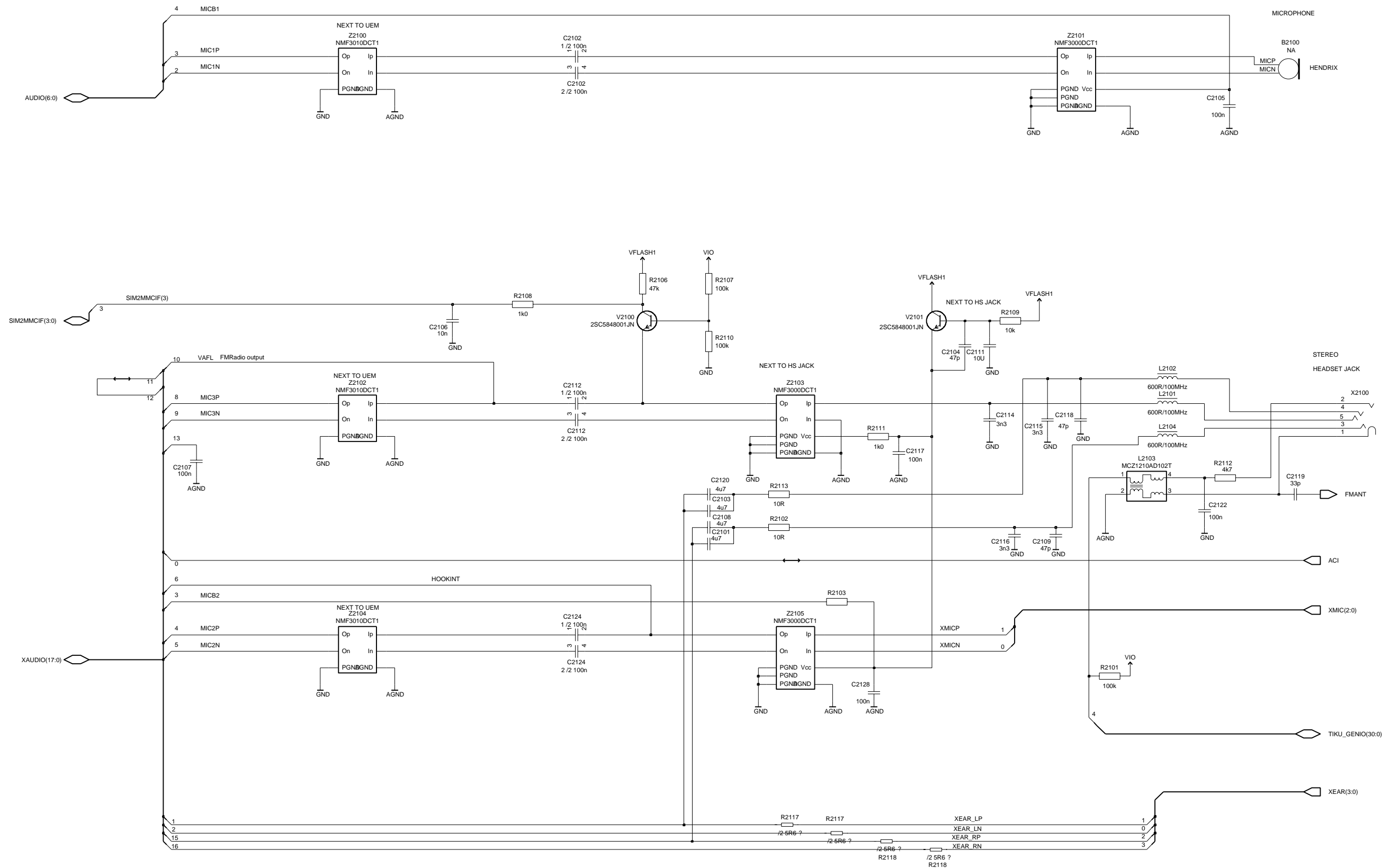
Version 12, edit 110



MODES	LOGIC INPUTS		
	BAND	GAIN_CTL	IF_SEL
CEL CDMA Hi Gain	0	1	0
CEL CDMA Lo Gain	0	0	0
PCS CDMA Hi Gain	1	1	0
PCS CDMA Lo Gain	1	0	0
AMPS Hi Gain	0	1	1
AMPS Lo Gain	0	0	1

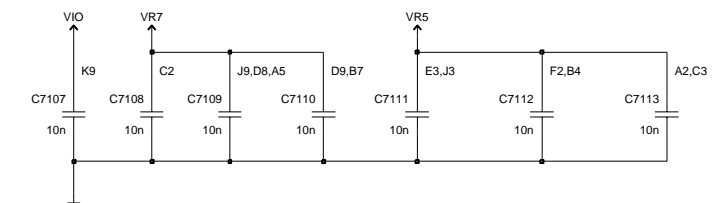
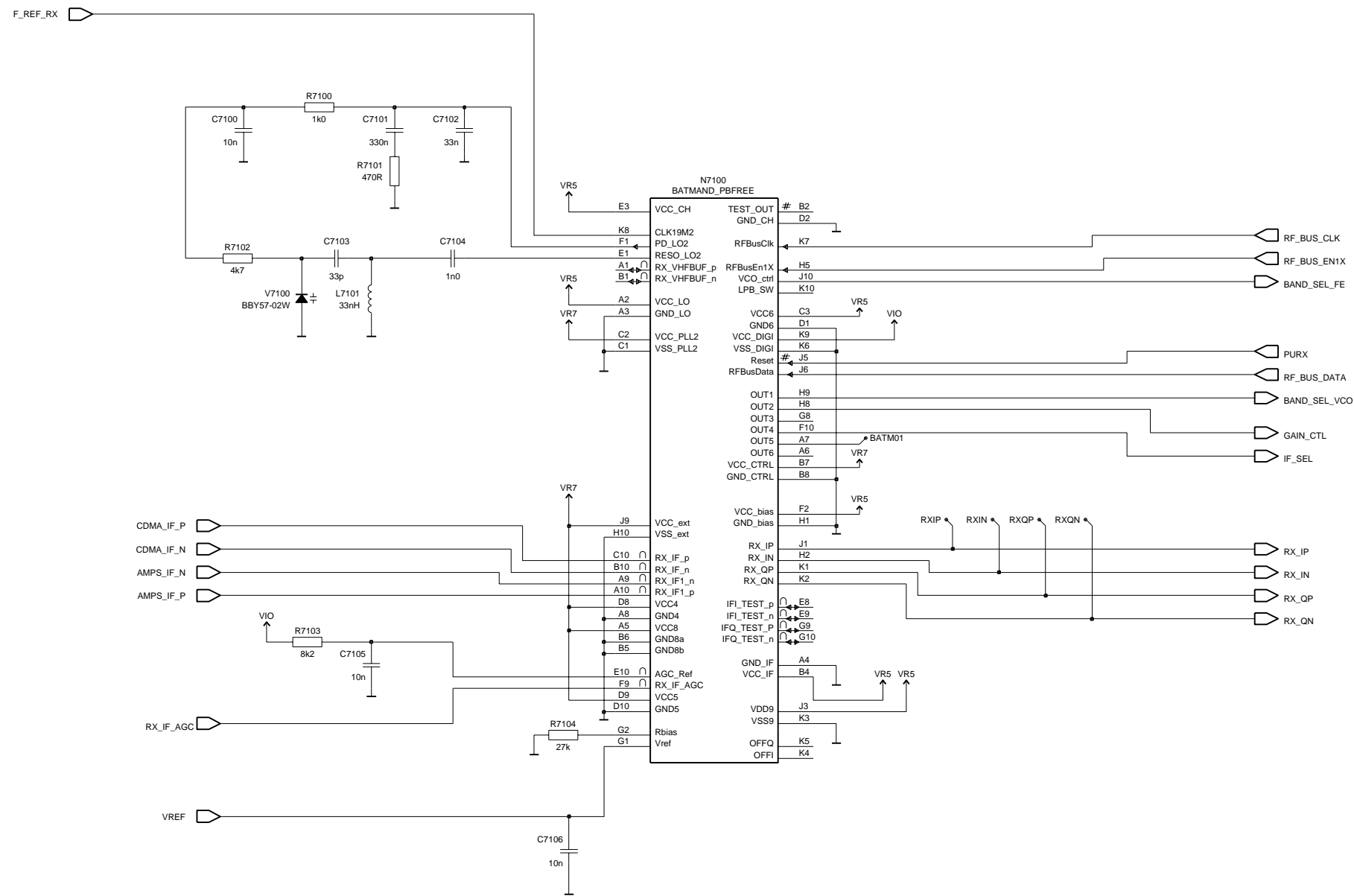
Audio

Version 1, edit 252



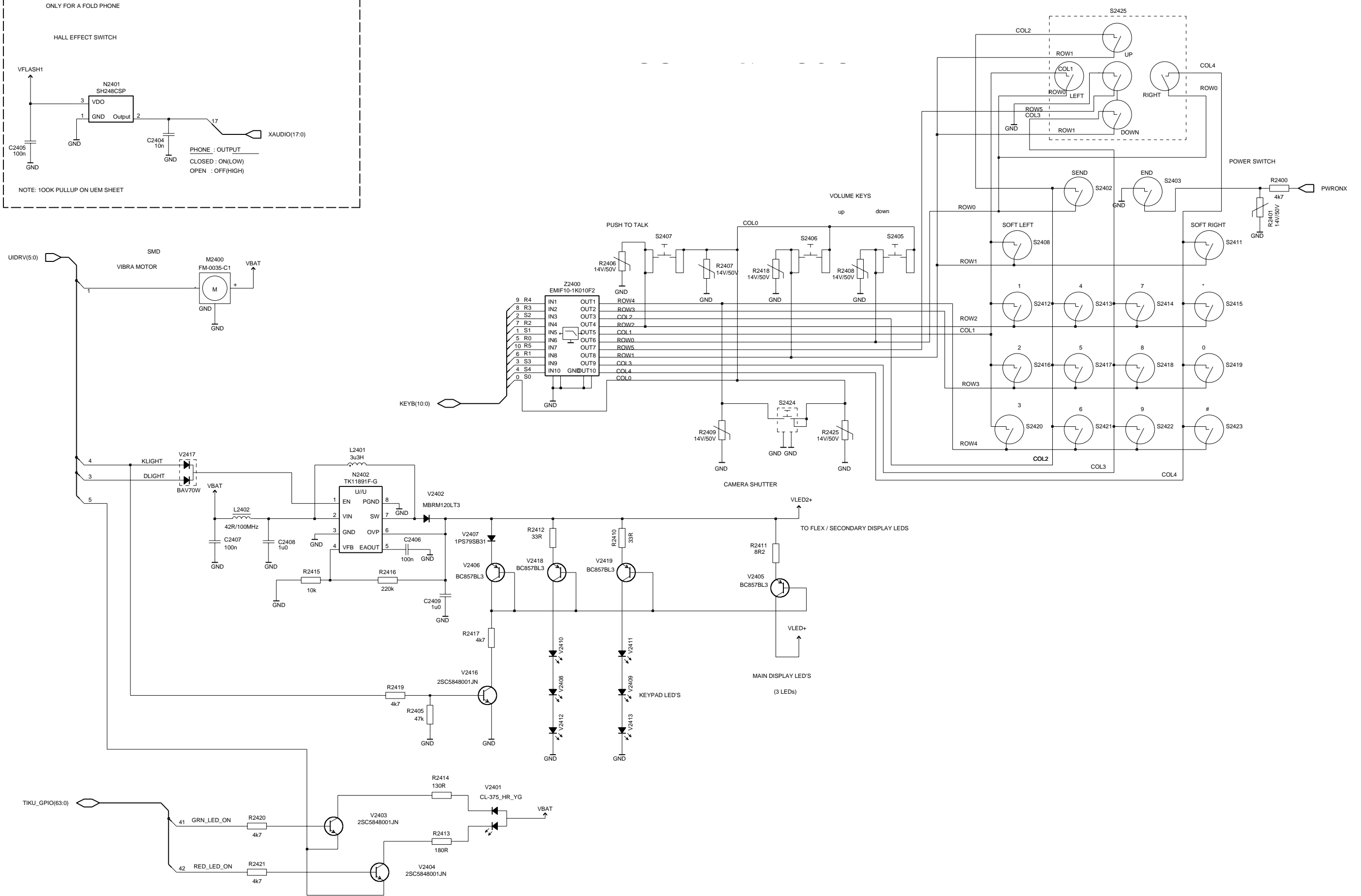
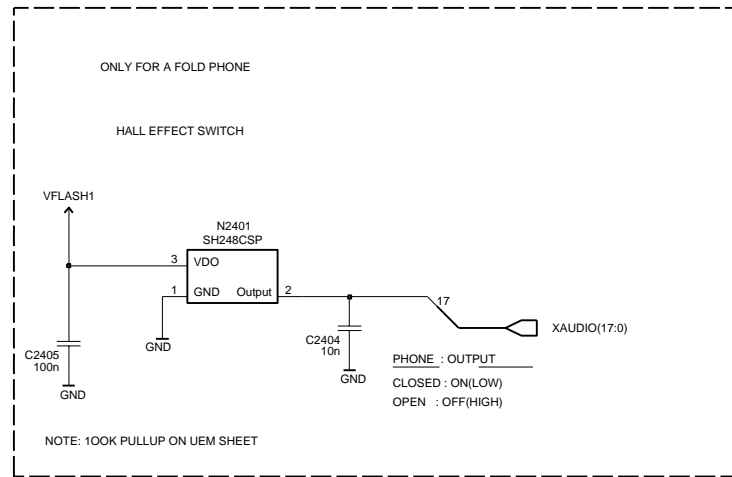
N7100 Rx Downconverter

Version 12, edit 96



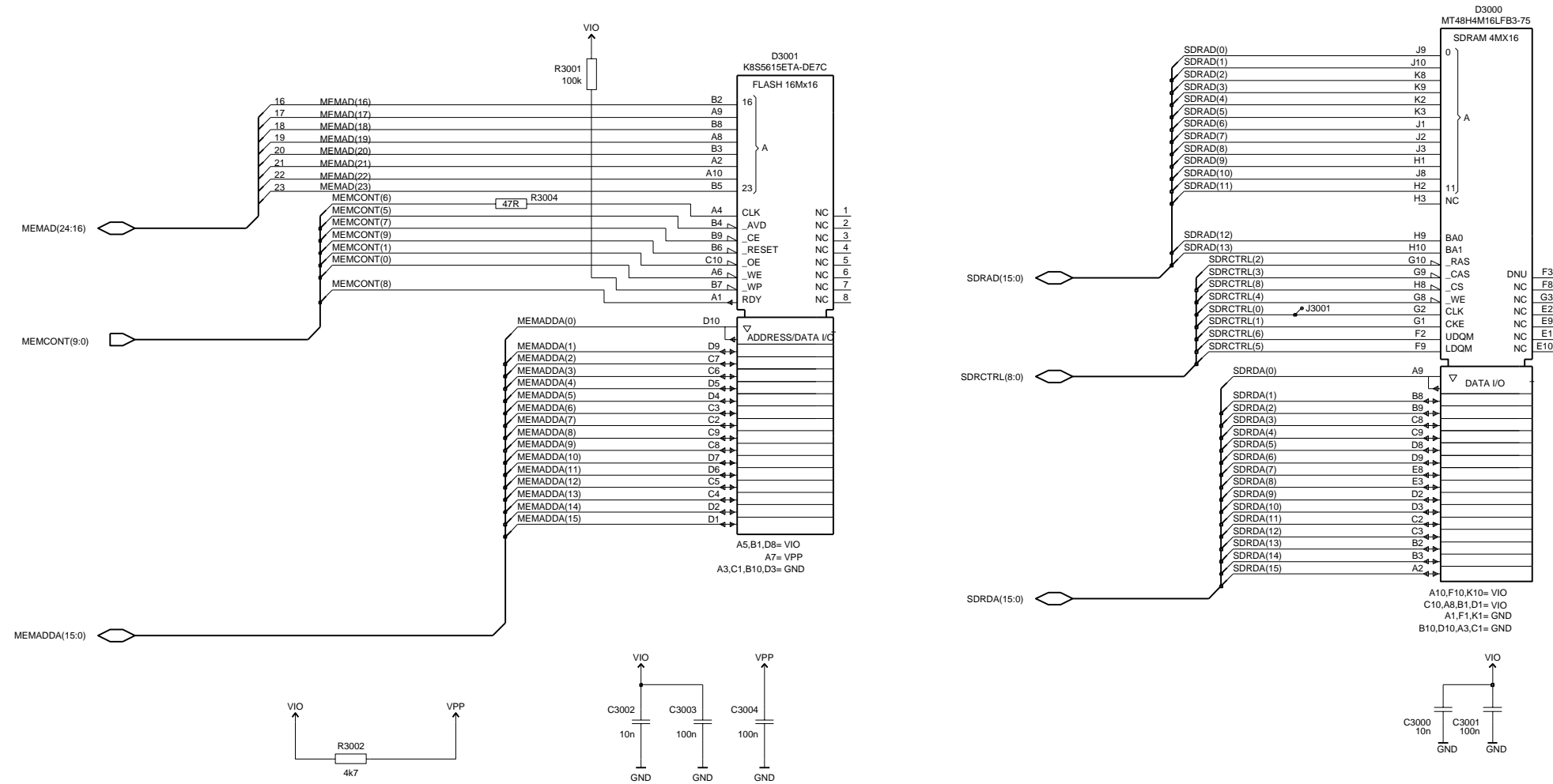
Key UI

Version 13, edit 292



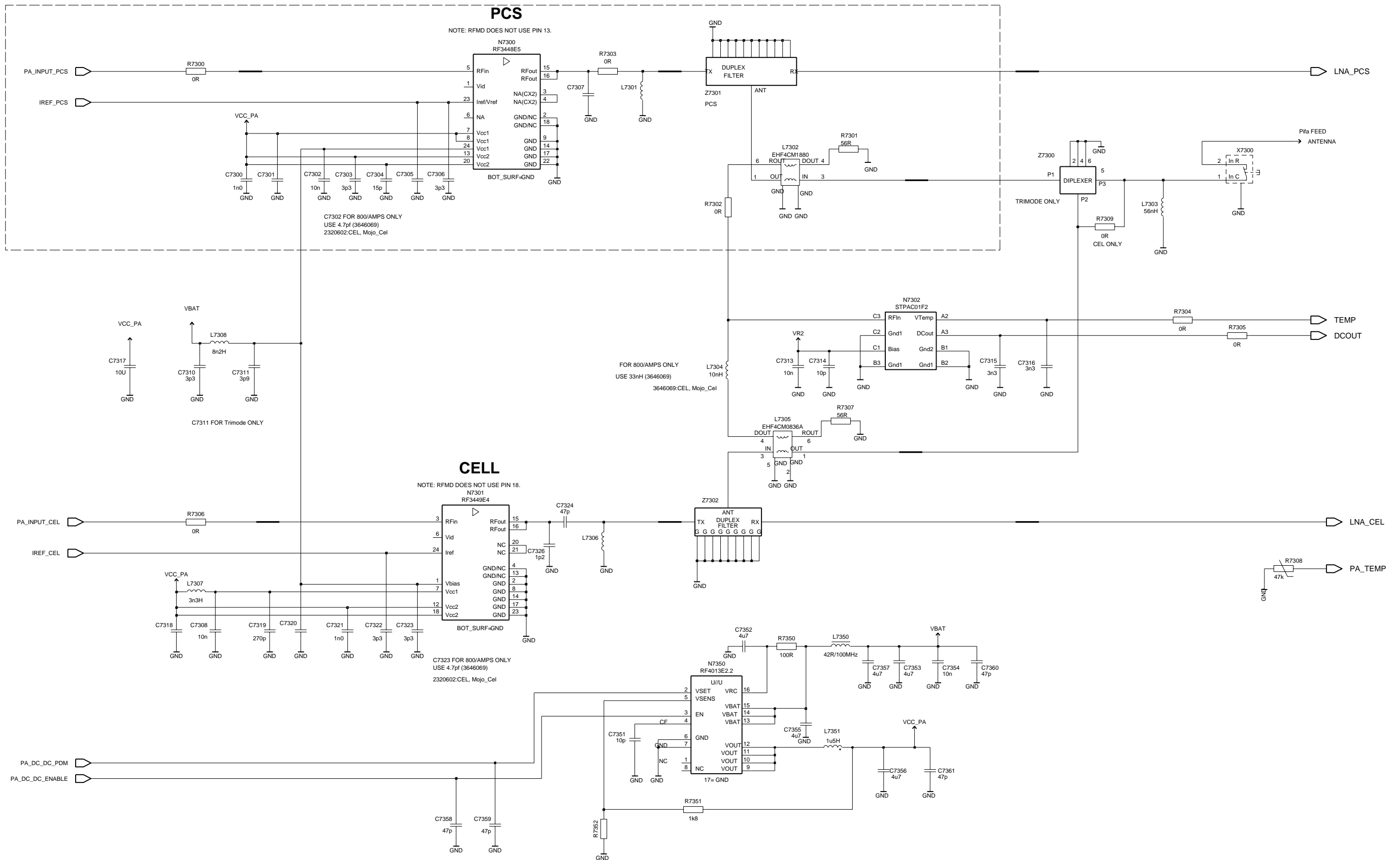
Memory

Version 0.5, edit 214



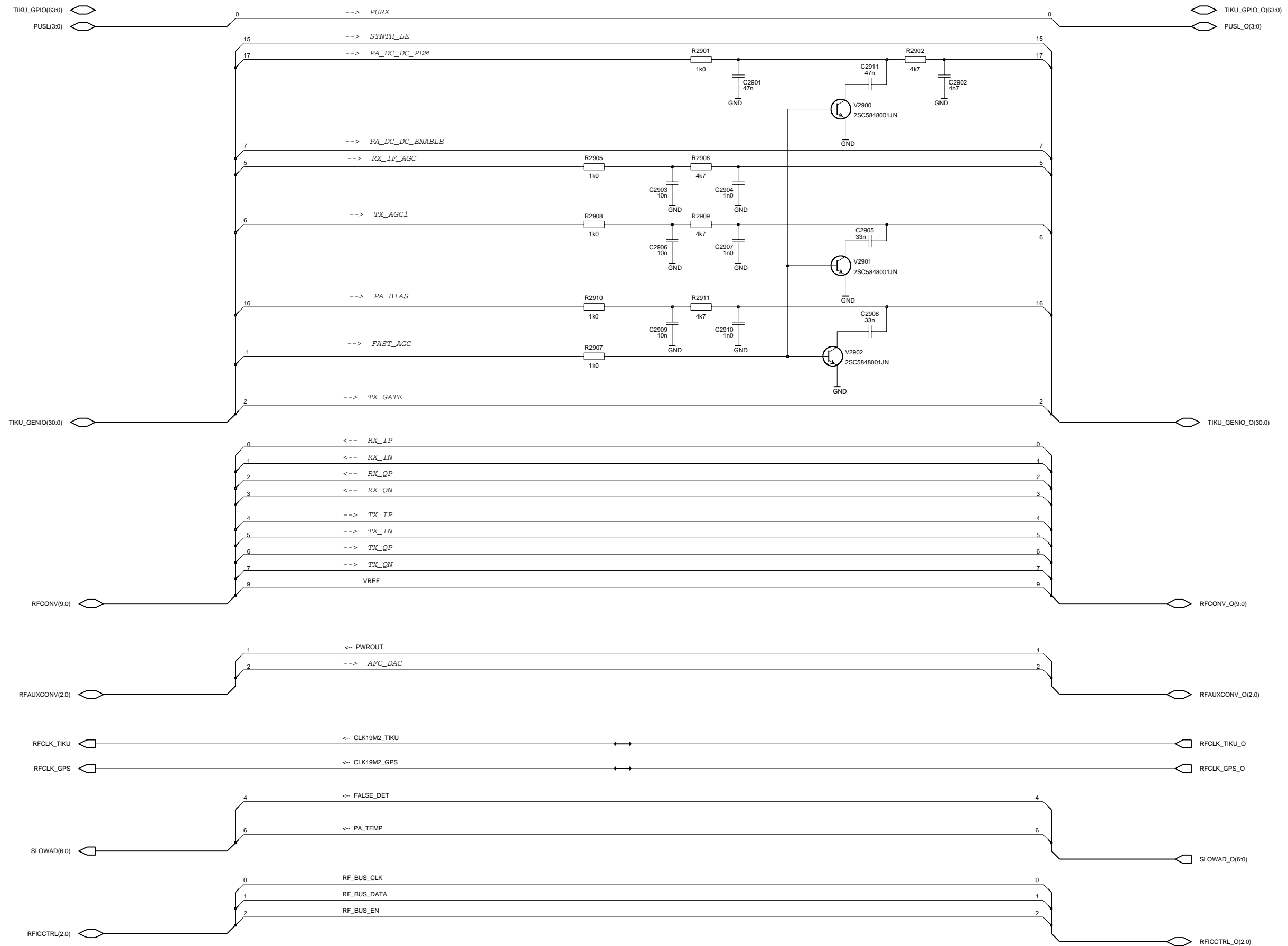
PA

Version 7.5, edit 113



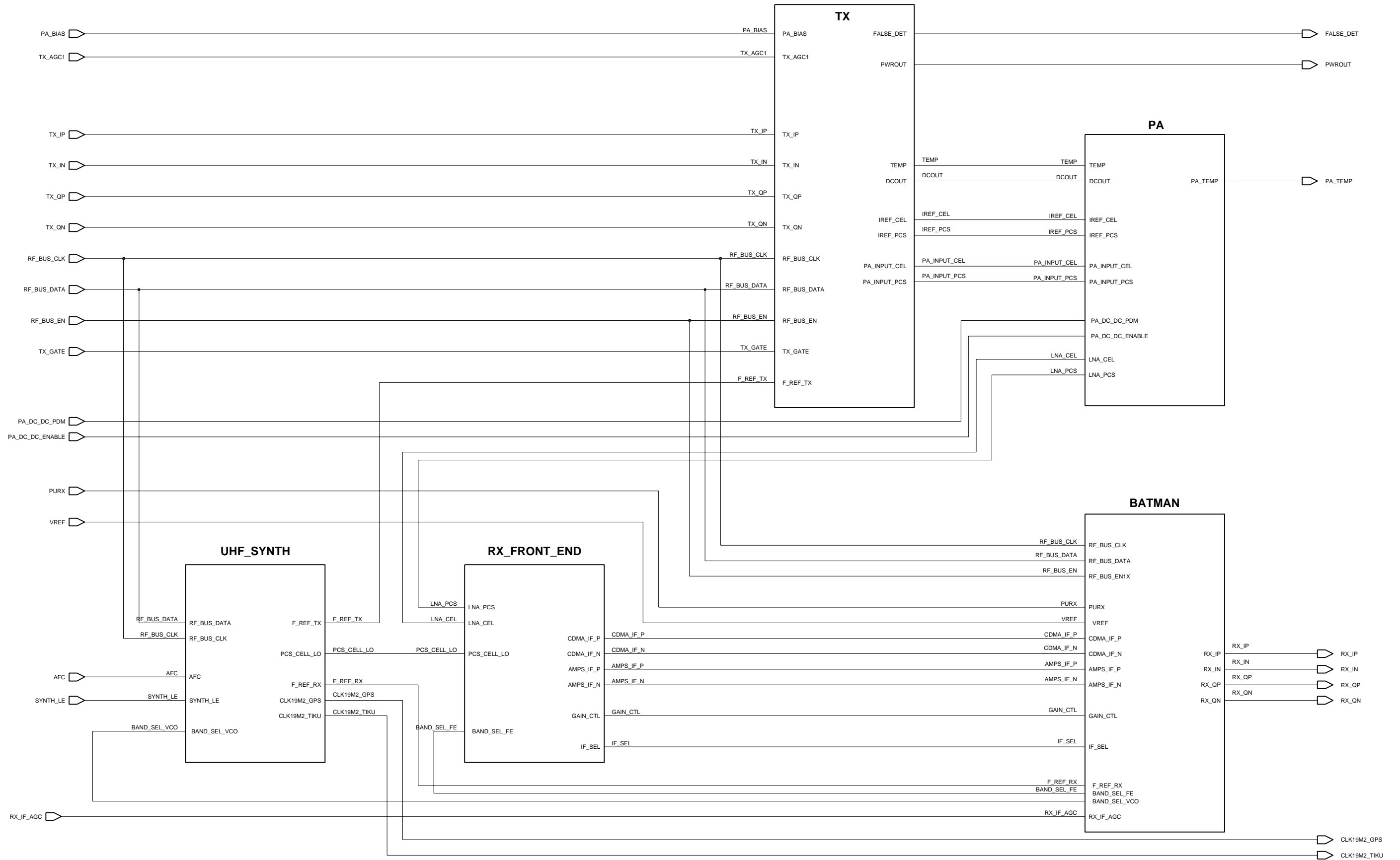
RF-BB Interface

Version 0.5, edit 235



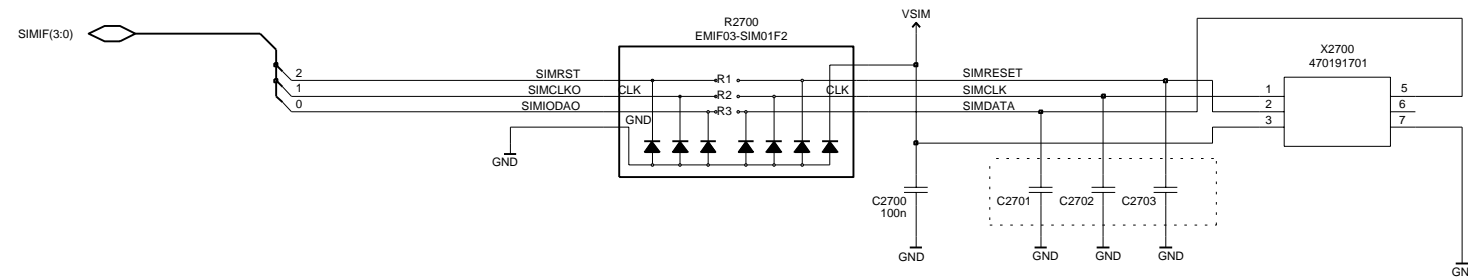
RF - Top

Version 0.5, edit 392



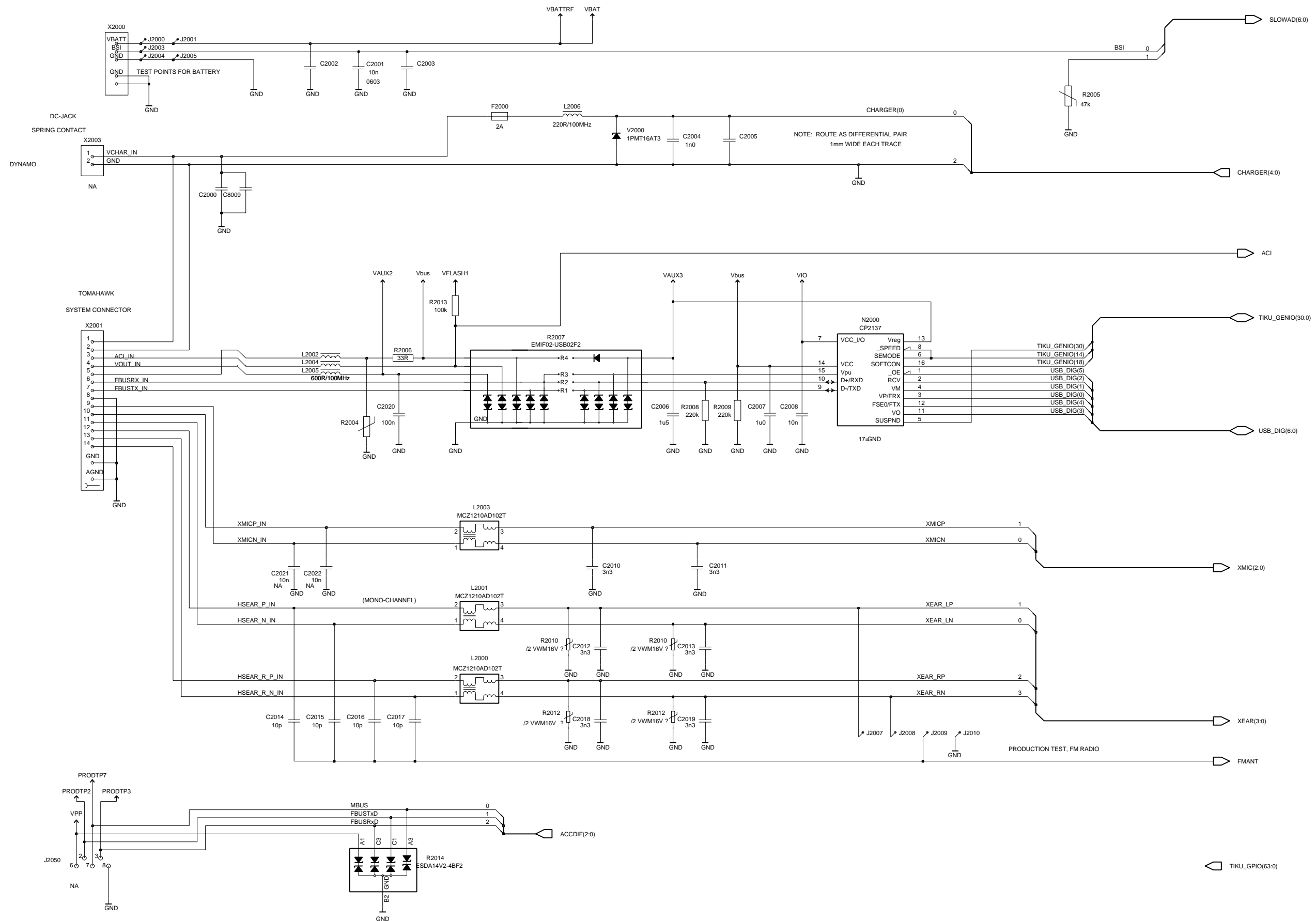
UIM Card Connector

Version 0.0, edit 193



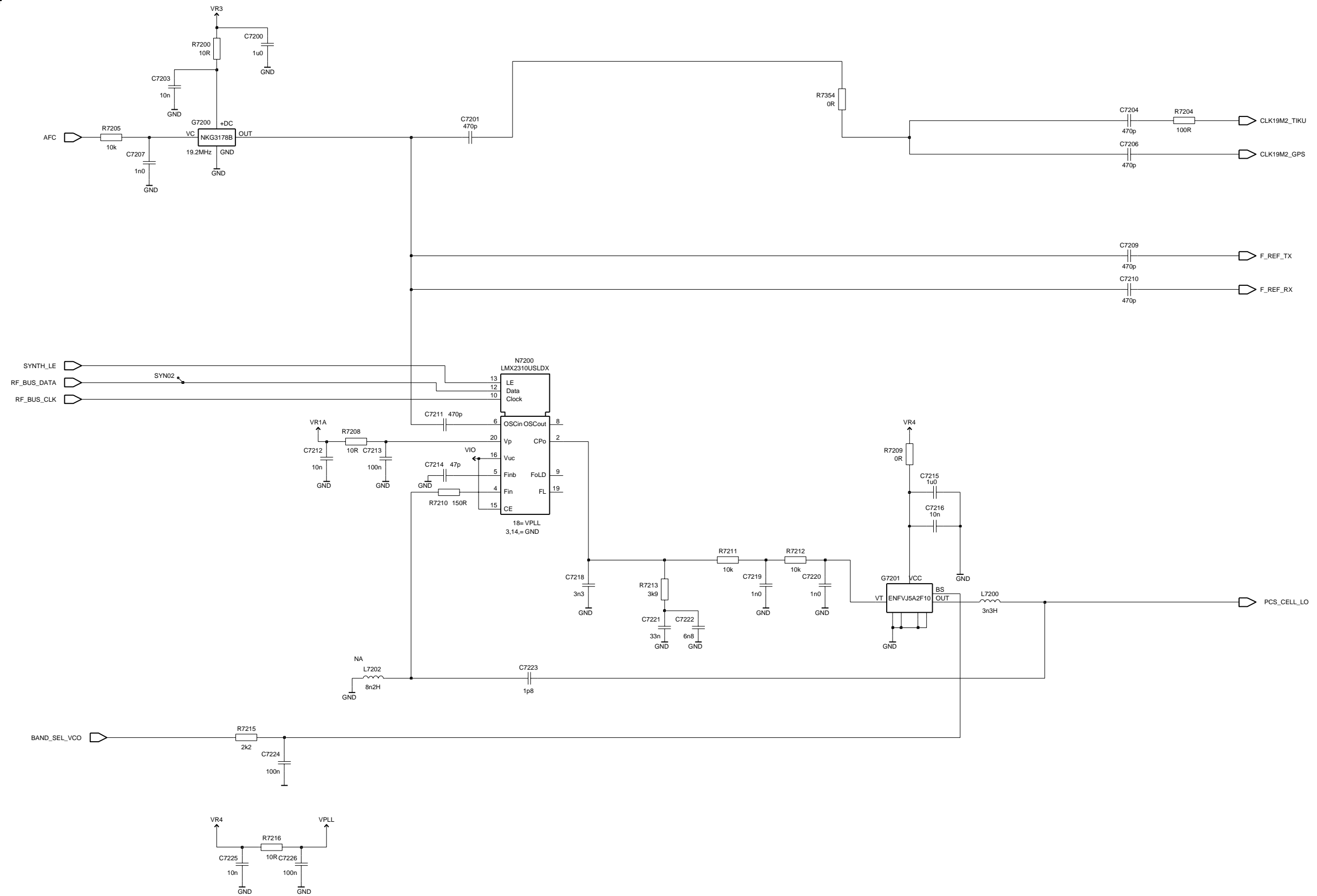
System Connector

Version 0.5, edit 284



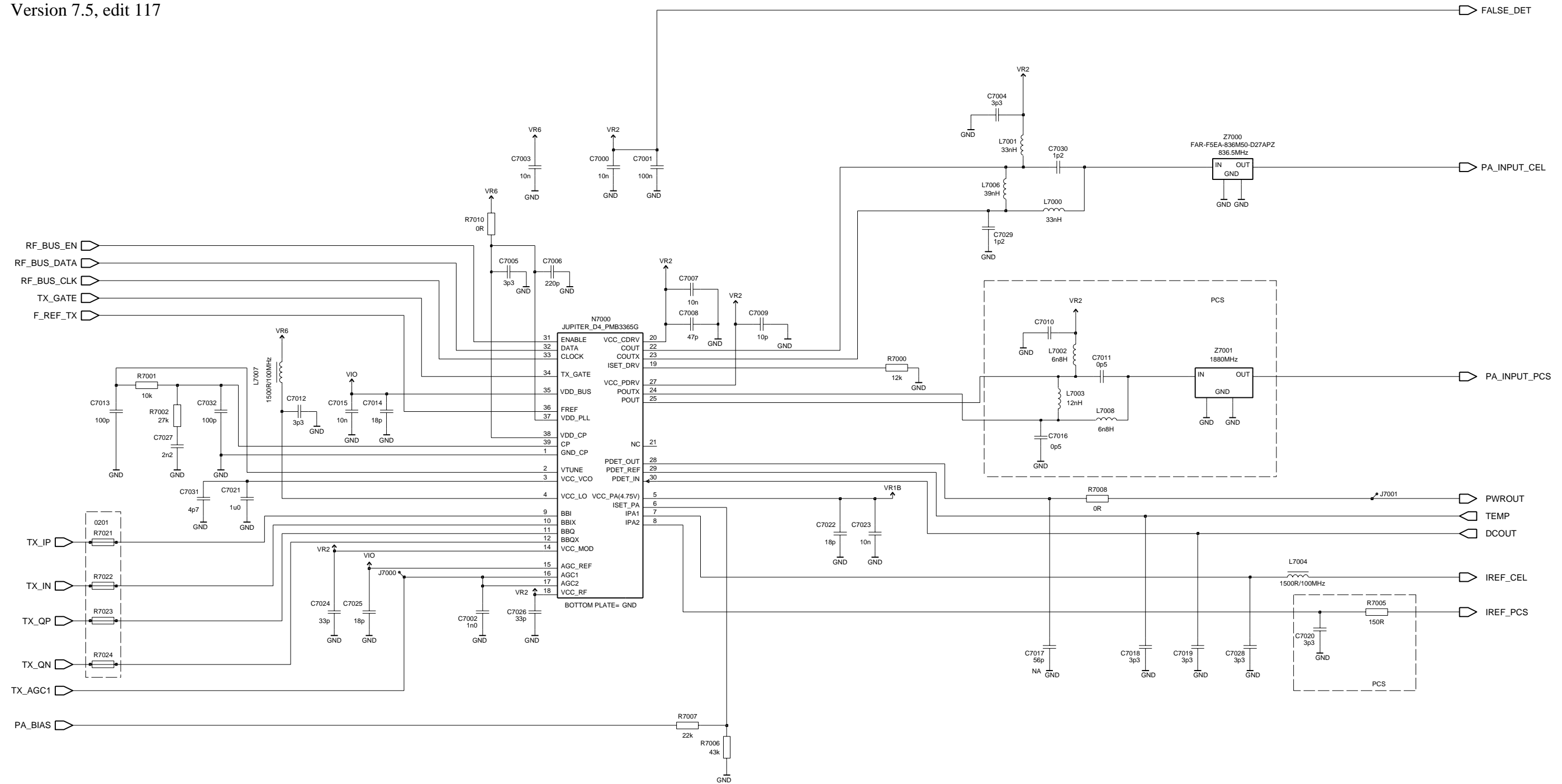
UHF Synthesizer

Version 12, edit 104



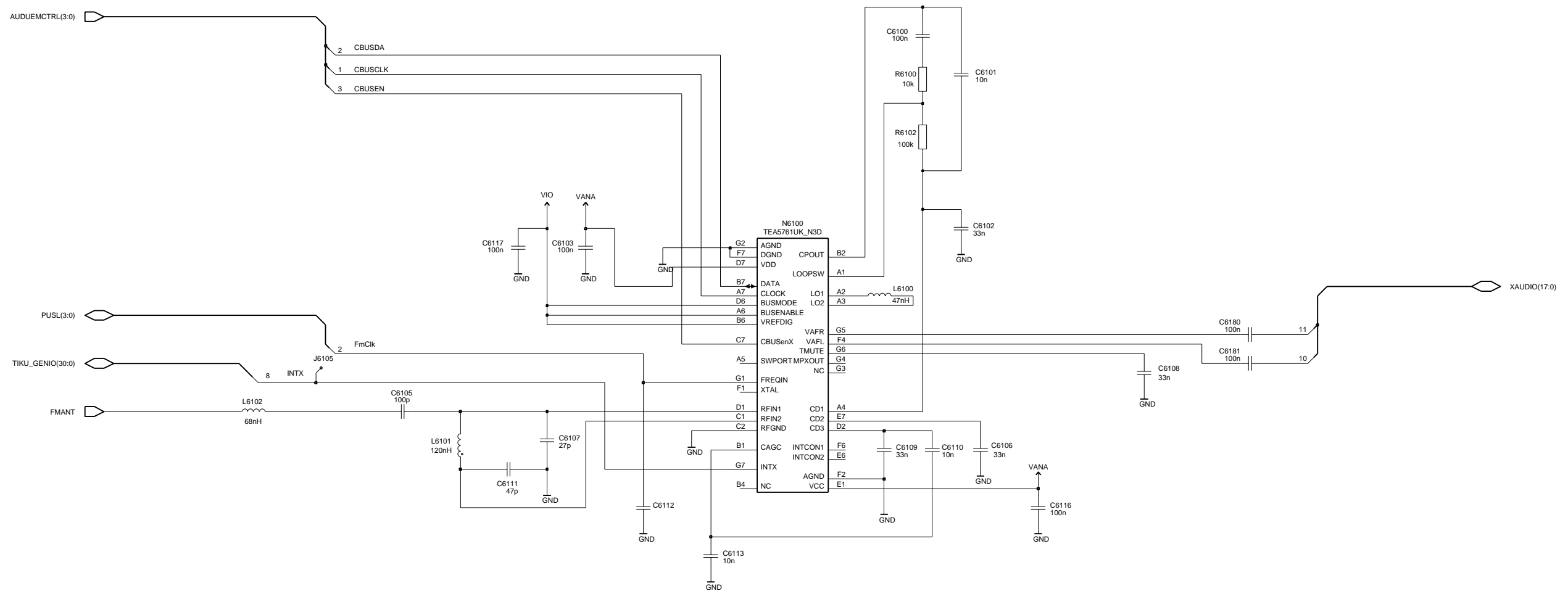
N7000 Tx Upconverter

Version 7.5, edit 117



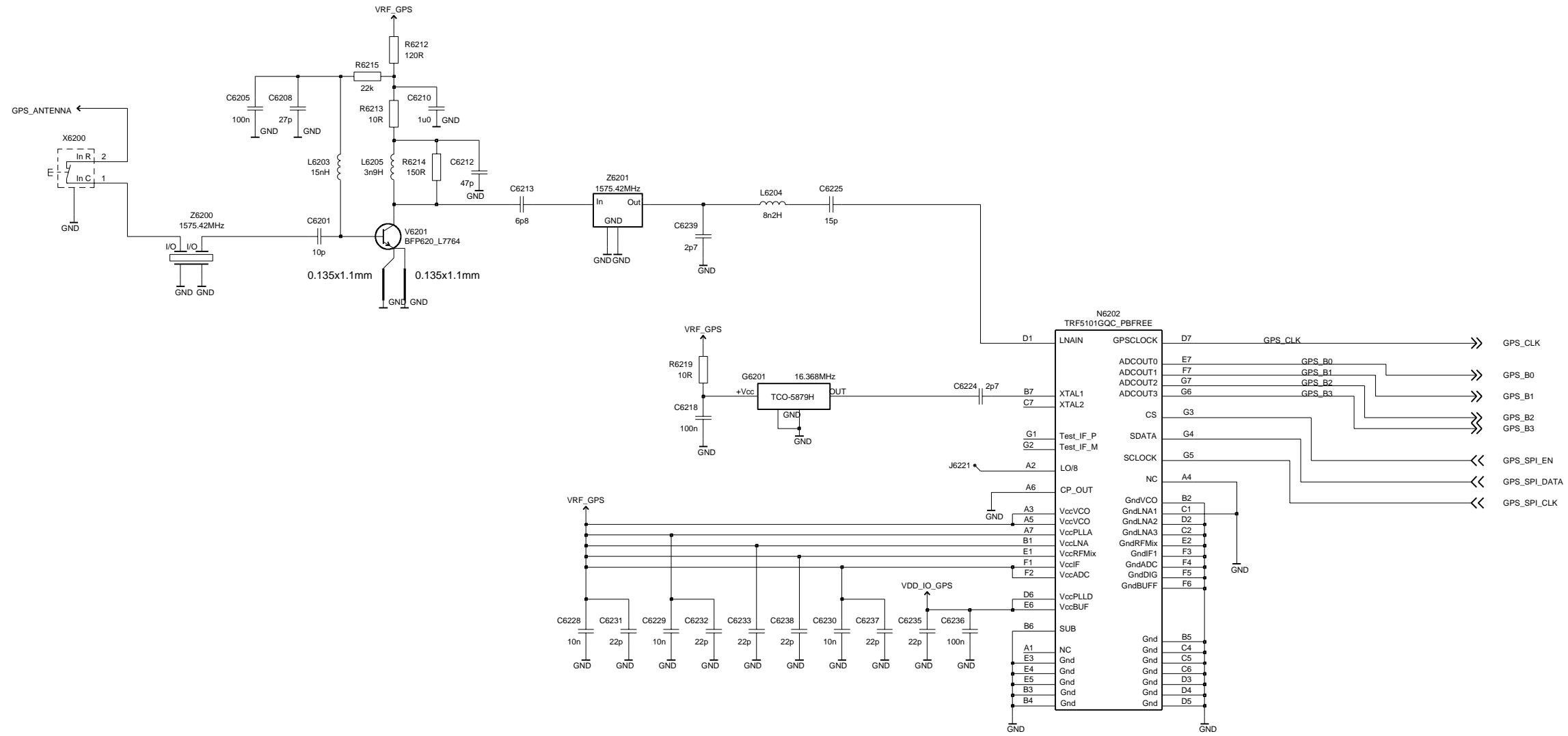
FM Radio

Version 1.3, edit 205



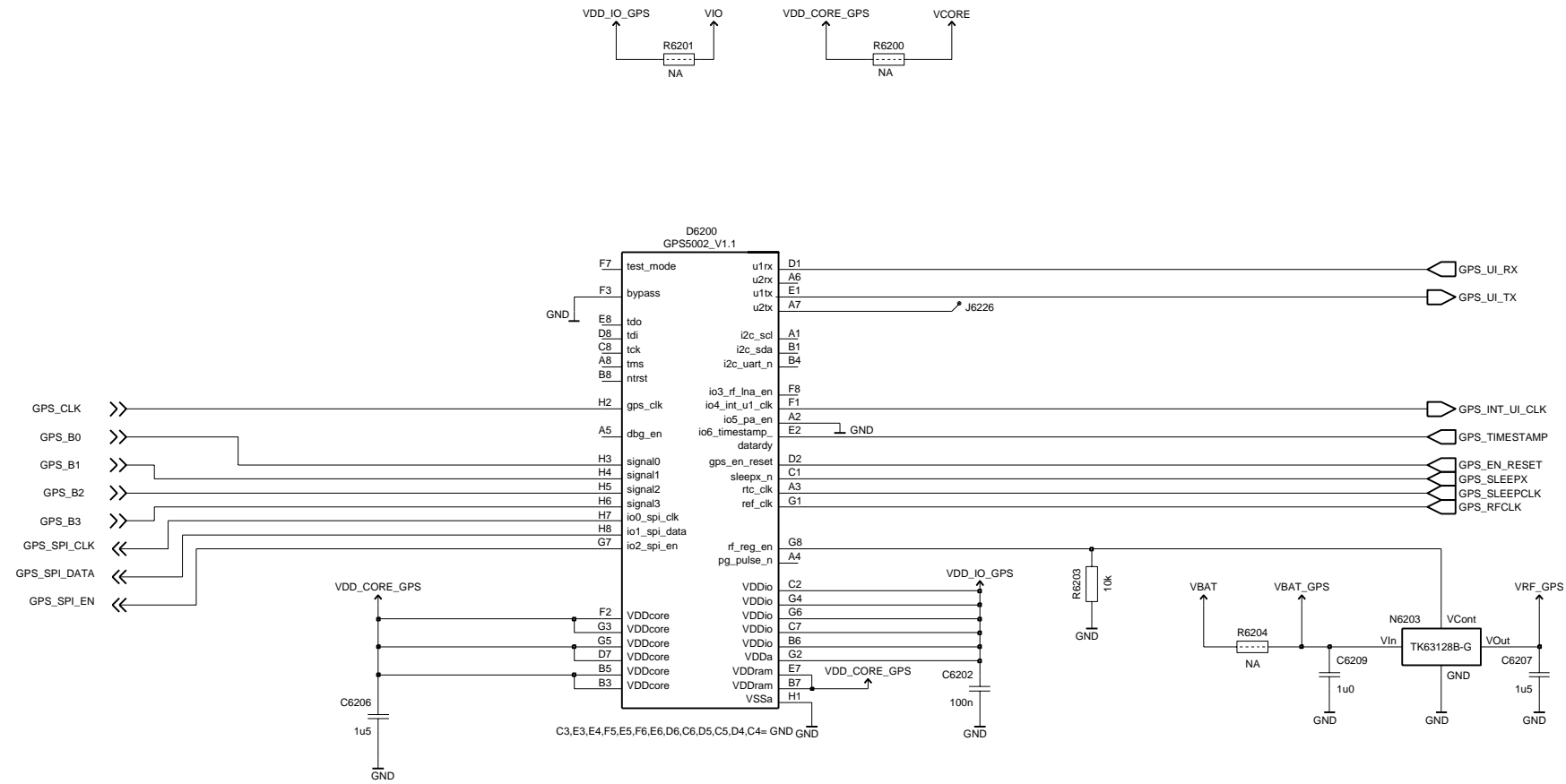
3155i GPS RF

Version 7, edit 141



3155i GPS BB

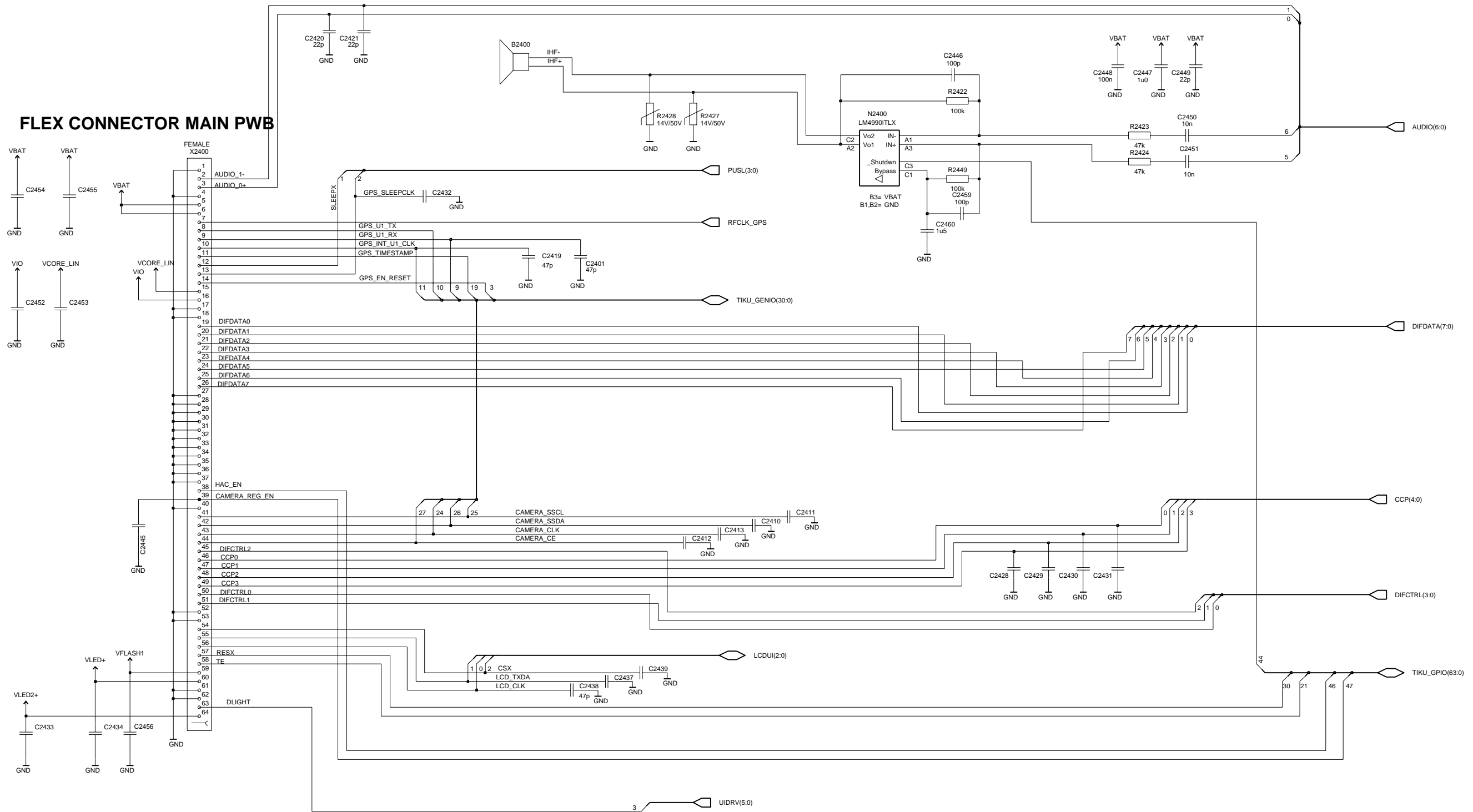
Version 7, edit 191



Make an ESD GND moat around the GPS module

Flex Interface

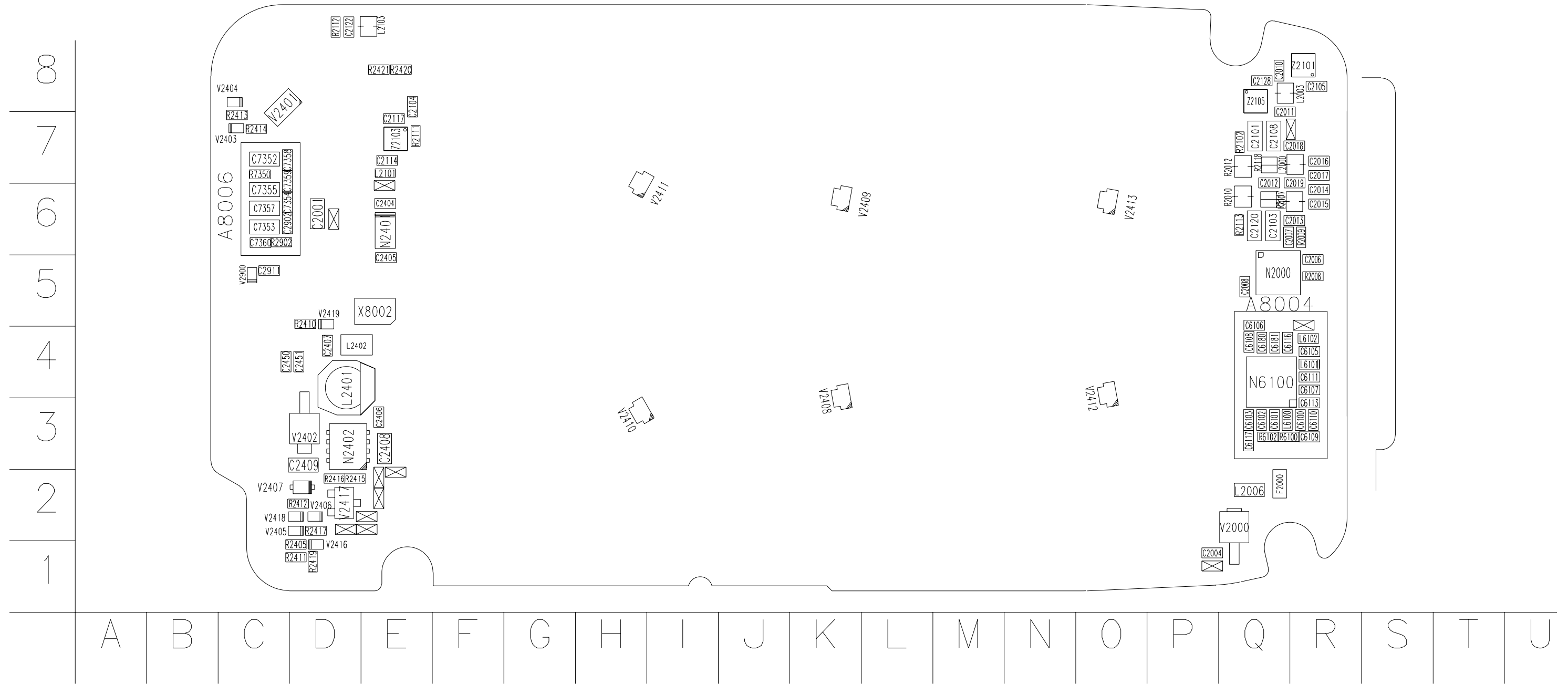
Version 0.0, edit 150



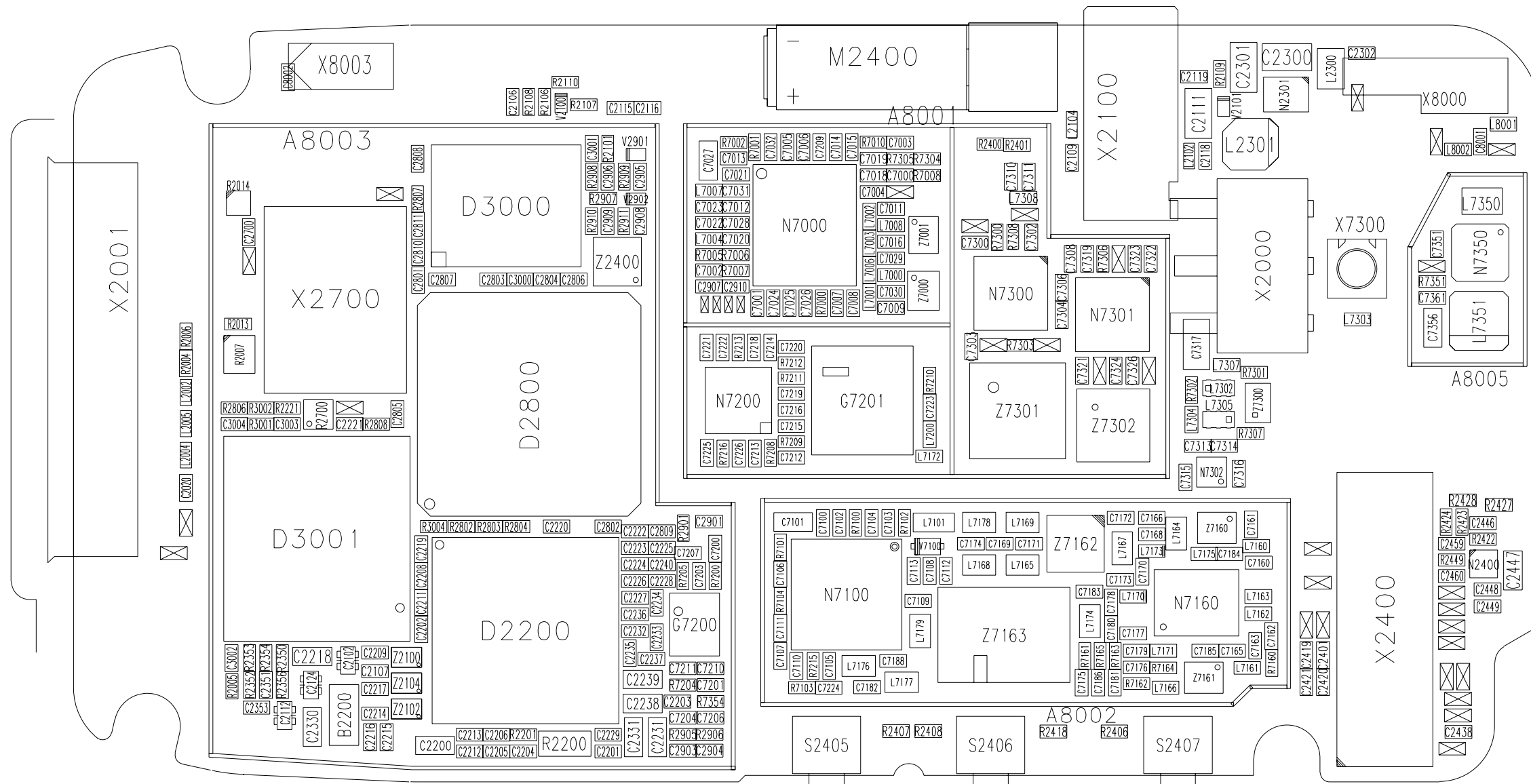
Note: Camera signals are not applicable to the 3155/3155i (RM-41) and 3152 (RM-61) mobile terminals

Component Layouts and Values — Main PWB

3155 and 3155i Component Layout - Top



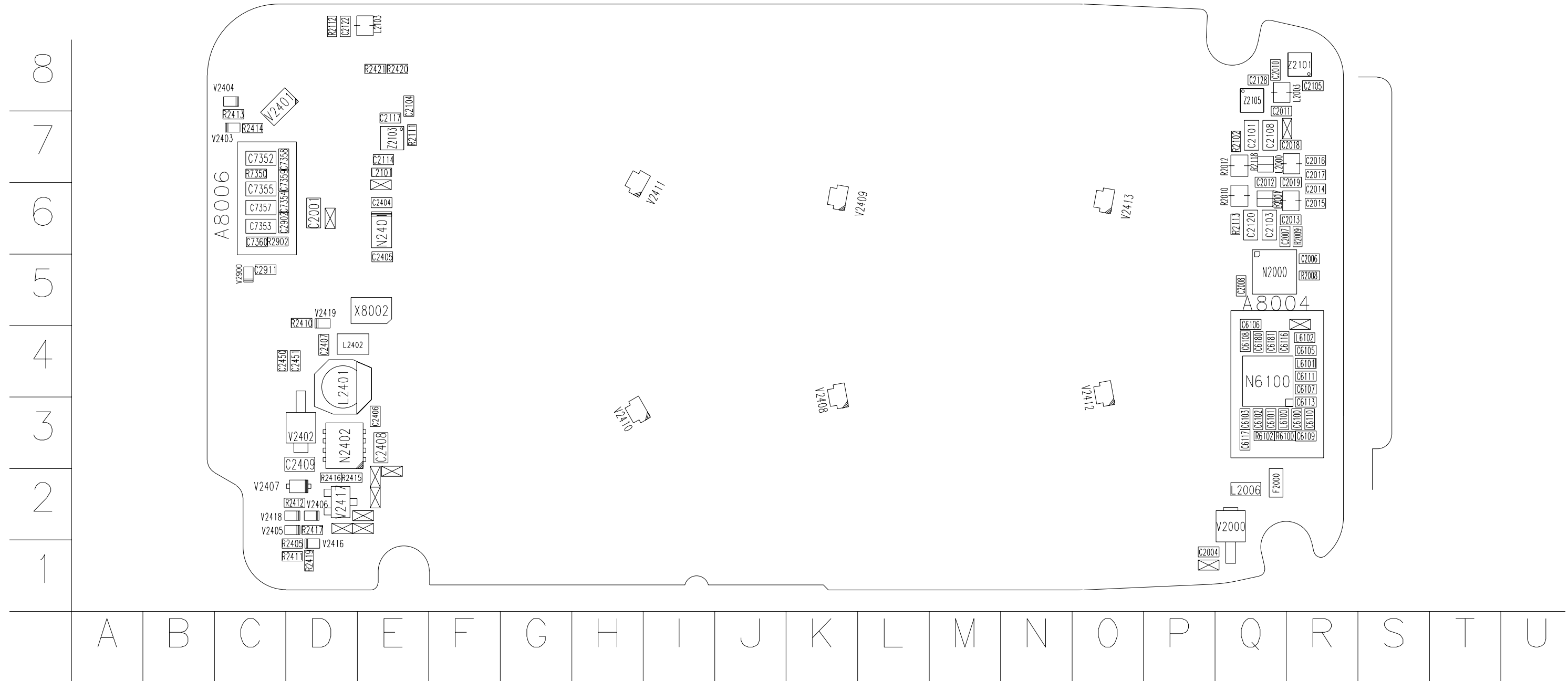
3155 and 3155i Component Layout - Bottom



8
7
6
5
4
3
2
1

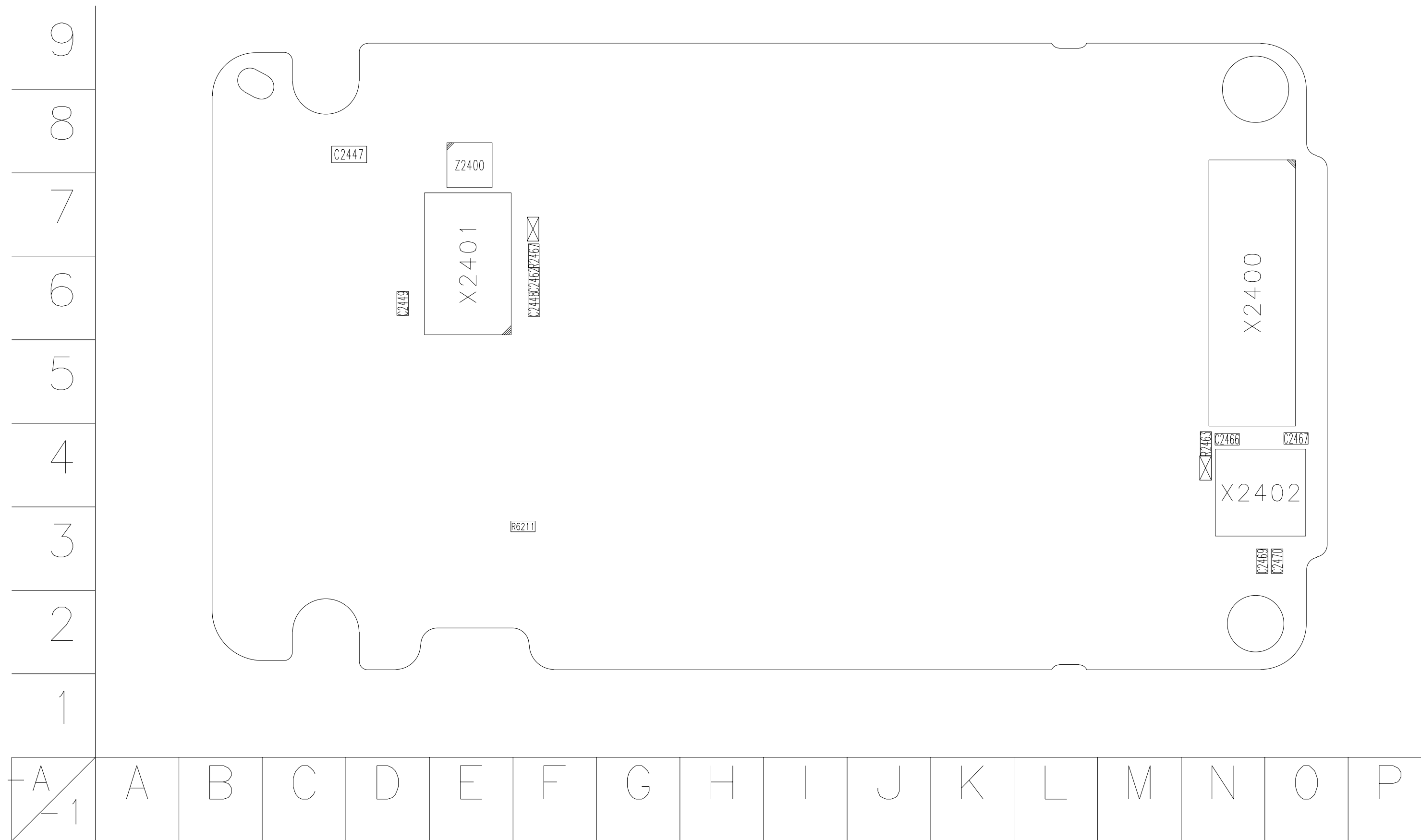
U	T	S	R	Q	P	O	N	M	L	K	J	I	H	G	F	E	D	C	B	A
---	---	---	---	---	---	---	---	---	---	---	---	---	---	---	---	---	---	---	---	---

3152 Component Layout - Top

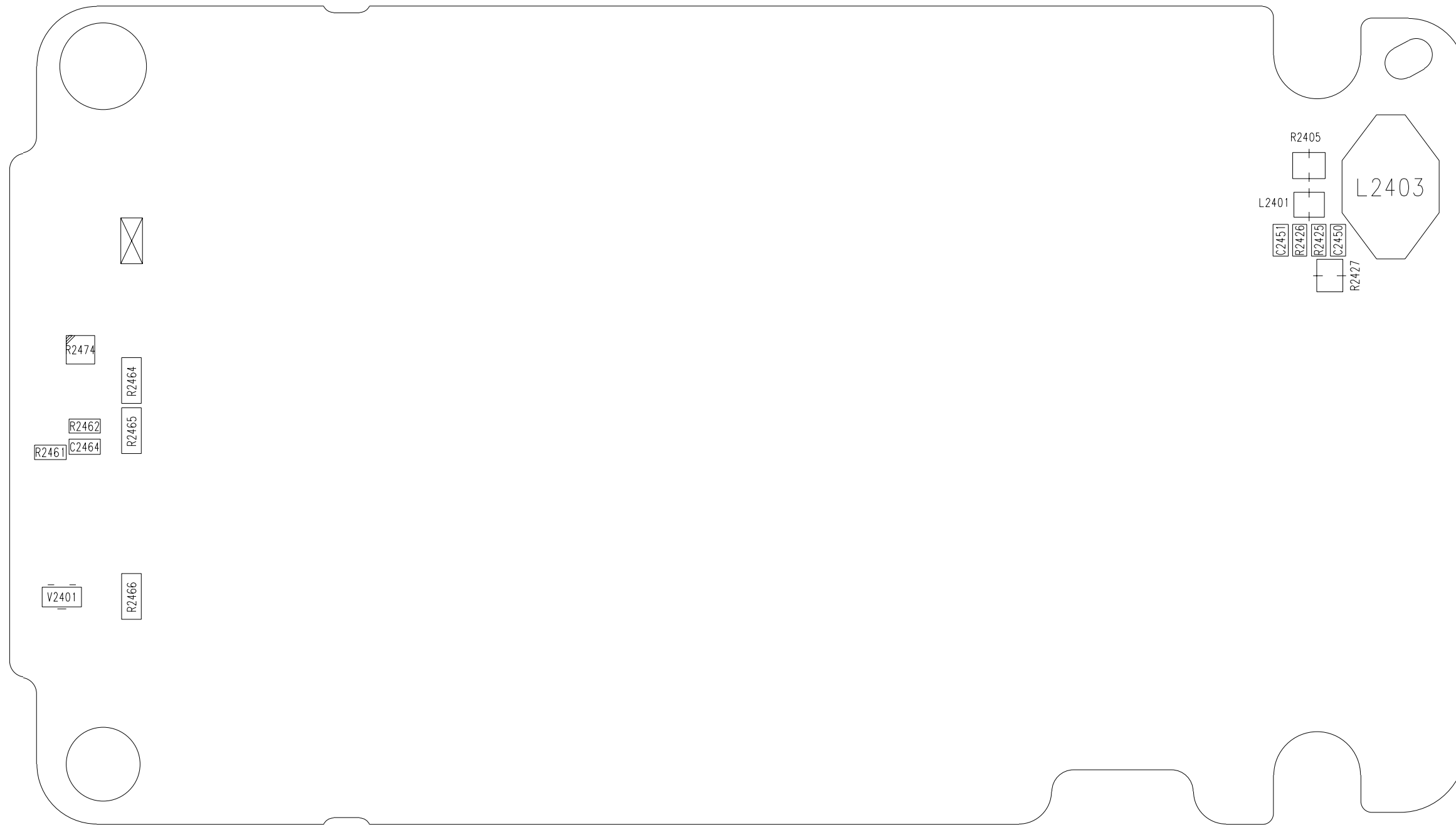


3155 and 3152 (Non-GPS) Component Layouts and Values — Secondary Display

3155 and 3152 Component Layout - Top



3155 and 3152 Component Layout - Bottom

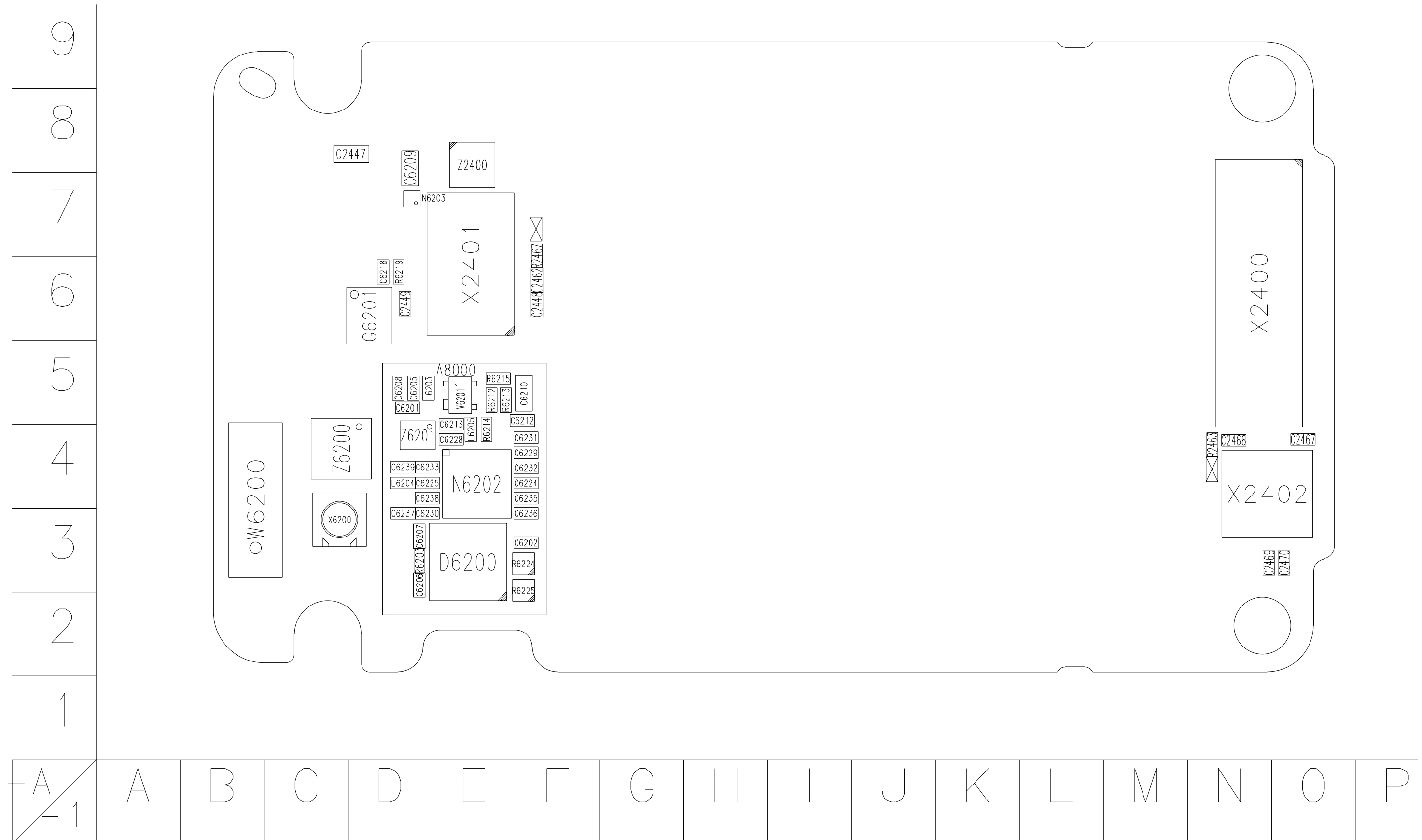


9
8
7
6
5
4
3
2
1

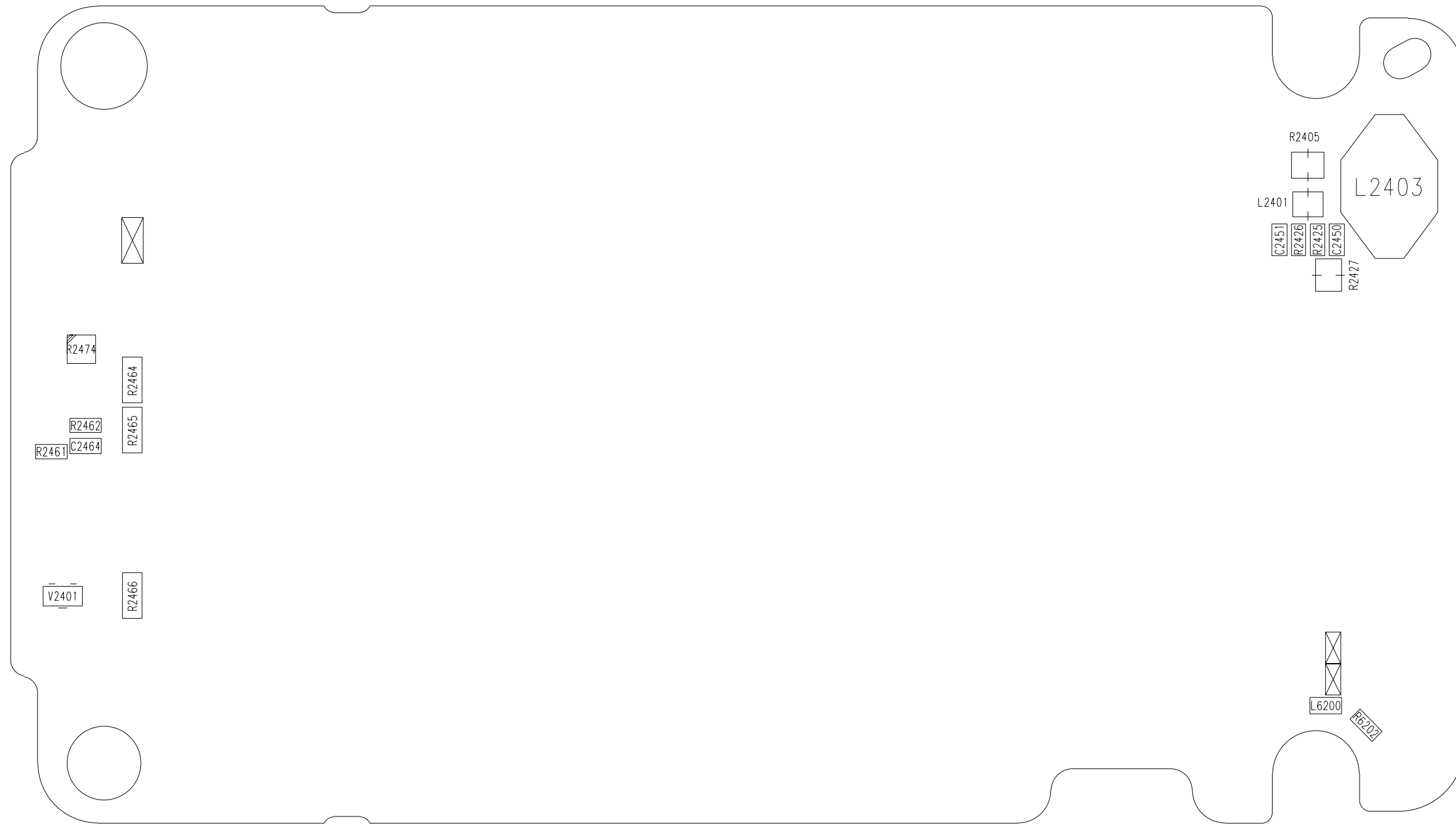
P	O	N	M	L	K	J	I	H	G	F	E	D	C	B	A	A
---	---	---	---	---	---	---	---	---	---	---	---	---	---	---	---	--------------

3155i (GPS) Component Layouts and Values — Secondary Display

3155i Component Layout - Top



3155i Component Layout - Bottom



9
8
7
6
5
4
3
2
1

P	O	N	M	L	K	J	I	H	G	F	E	D	C	B	A	A
---	---	---	---	---	---	---	---	---	---	---	---	---	---	---	---	--------------

This page intentionally left blank.